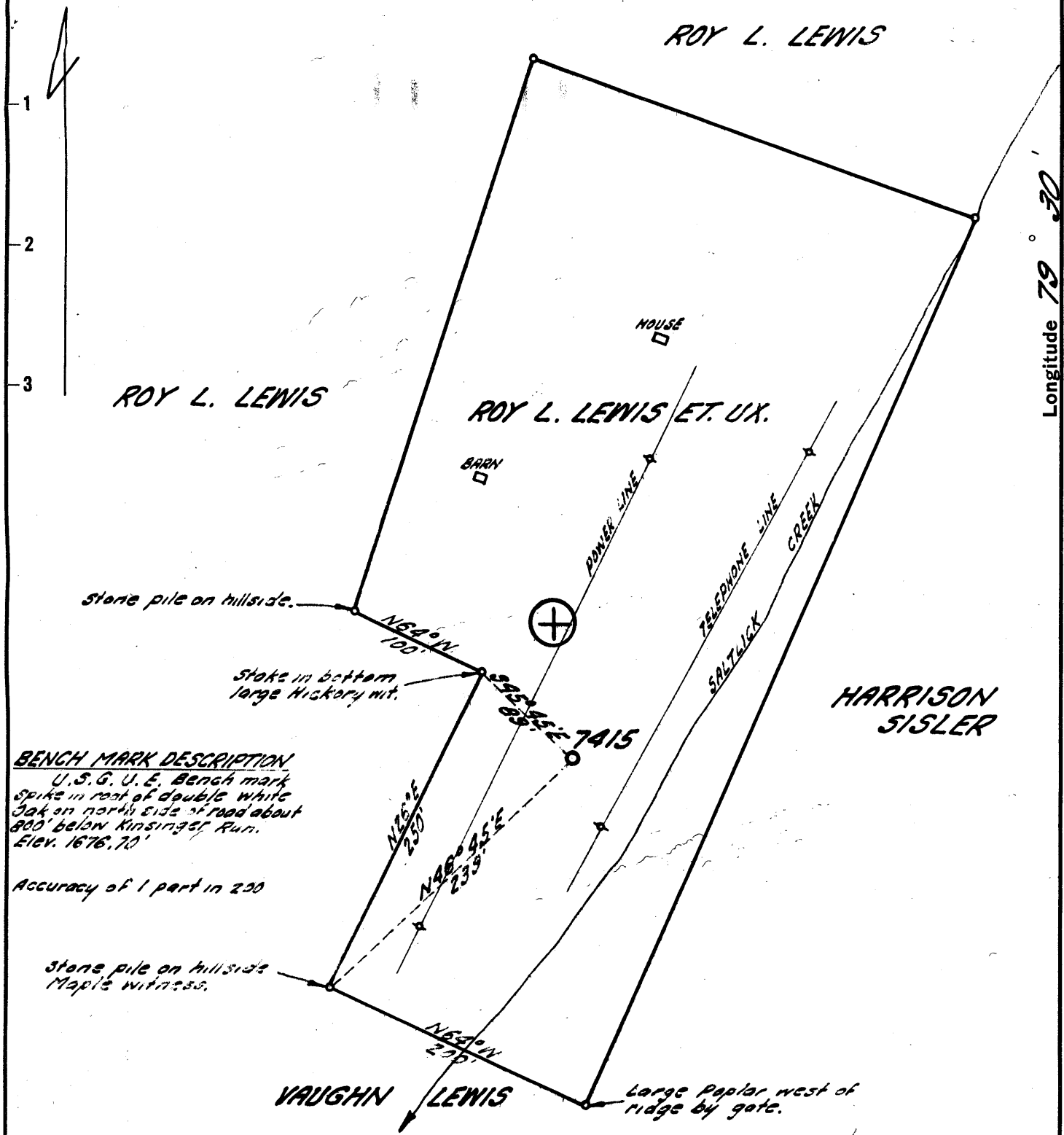


Latitude 39° 30'

Longitude 79° 30'



stone pile on hillside.

Stake in bottom large Hickory mt.

**BENCH MARK DESCRIPTION**  
 U.S.G. U.E. Bench mark  
 spike in root of double white  
 oak on north side of road about  
 800' below Kingsport Run.  
 Elev. 1676.70'  
 Accuracy of 1 part in 200

stone pile on hillside  
Map's witness.

VAUGHN LEWIS

Large Poplar west of  
ridge by gate.

4.88 S.  
 3.62 W.  
 1.5 W (F-13)

*Seybert R. Ferrell*

New Location   
 Drill Deeper   
 Abandonment

Company ATLANTIC SEABOARD CORP.  
 Address CHARLESTON, W.VA.  
 Farm ROY L. LEWIS, ET. UX.  
 Tract \_\_\_\_\_ Acres 5 Lease No. AS-359  
 Well (Farm) No. \_\_\_\_\_ Serial No. 7415  
 Elevation (Spirit Level) 1902.35'  
 Quadrangle KINGWOOD - NE  
 County PRESTON District PORTLAND  
 Engineer Seybert R. Ferrell  
 Engineer's Registration No. 2529  
 File No. 174-133 Drawing No. \_\_\_\_\_  
 Date 3-12-63 Scale 1" = 100'

STATE OF WEST VIRGINIA  
 DEPARTMENT OF MINES  
 OIL AND GAS DIVISION  
 CHARLESTON

**WELL LOCATION MAP**  
 FILE NO. PRES-106

+ Denotes location of well on United States  
 Topographic Maps, scale 1" to 62,500, lat-  
 itude and longitude lines being represented  
 by border lines as shown.

- Denotes one inch spaces on border line  
 of original tracing.

Sampler 45100 5000 # Mile. Grid - 9-0 280 Deep Well



STATE OF WEST VIRGINIA  
DEPARTMENT OF MINES  
OIL AND GAS DIVISION 15

Quadrangle Kingwood

Permit No. Pres. 106

WELL RECORD

Storage  
Oil or Gas Well Gas  
(KIND)

Company Atlantic Seaboard Corporation  
Address Elkins, West Virginia  
Farm Roy L. Lewis Et Ux Acres 5  
Location (waters) Salt Lick Creek  
Well No. 7415 Elev. 1902.35  
District Portland County Preston  
The surface of tract is owned in fee by Roy L. Lewis Et Ux  
Address Terra Alta, W. Va.  
Mineral rights are owned by Roy L. Lewis, Et Ux  
Address Terra Alta, W. Va.

Drilling commenced April 7, 1963  
Drilling completed July 11, 1963  
Date Shot --- From --- To ---  
With ---

Open Flow /10ths Water in --- Inch  
/10ths Merc. in --- Inch

Volume --- Cu. Ft.

Rock Pressure --- lbs. --- hrs.

Oil --- bbls., 1st 24 hrs.

WELL ACIDIZED SEE REVERSE

WELL FRACTURED ---

RESULT AFTER TREATMENT SEE REVERSE

ROCK PRESSURE AFTER TREATMENT SEE REVERSE

Fresh Water --- Feet Salt Water --- Feet

Casing and Tubing	Used in Drilling	Left in Well	Packers
Size			Kind of Packer
<del>20"</del>	20'	20'	
13-3/8 H-40	404'	404'	
<del>9-5/8</del>	1514'6"	225	Size of
<del>7"</del>	5389'	5389'	
<del>4 1/2"</del>	589'	589'	Depth set
<del>2-3/8</del>	5208'	5208'	
<del>1 1/2"</del>	608	608'	Perf. top
2			Perf. bottom
Liners Used			Perf. top
			Perf. bottom

CASING CEMENTED --- SIZE --- No. Ft. --- Date ---

SEE REVERSE

COAL WAS ENCOUNTERED AT --- FEET --- INCHES

--- FEET --- INCHES --- FEET --- INCHES

--- FEET --- INCHES --- FEET --- INCHES

Formation	Color	Hard or Soft	Top	Bottom	Oil, Gas or Water	Depth	Remarks
Siltstone & Shale			0	4634			
Tully Lime			4634	4655			
Siltstone & Shale			4655	5314	5454	5643	5802
Onondaga Lime			5314	5334	1902		
Chert			5334	5398			
Siltstone & Shale			5398	5454	3552		
Onondaga Lime			5454	5470			
Chert			5470	5604			
Shale			5604	5643			
Oriskany			5643	5802			
Helderberg Lime			5802				
Total Depth				5841			



Formation	Color	Hard or Soft	Top 15'	Bottom	Oil, Gas or Water	Depth Found	Remarks
<b>Logging:</b>							
Gamma Ray:		5832'	to surface	5-9-63	Schlumberger		
Temperature:		5841'	to 2000'	5-9-63	"		
Formation Density:		5840'	to 5358'	5-9-63	"		
Induction:		5837'	to 5357'	5-9-63	"		
Gamma Ray-Correlation:		5838'	to 5200'	5-10-63	McCullough		
<b>Casing &amp; Cement:</b>							
20" Road Casing (conductor) - 20' Driven into 17½" drilled hole - 4-7-63 - Not cemented.							
13-3/8", 48#/Ft., H-40 casing - 404' set at 410' (KB). Cemented to surface with 330 sacks neat cement, 5 sacks Ca Cl - 4-9-63 - Dowell							
9-5/8", 32#/Ft., H-40 casing - 1514'6" set at 1512' (KB). Cemented 100' with 40 sacks Class A Neat cement with 2% Ca Cl - 4-15-63 - Dowell. Backed off 9-5/8" L. ft and Right Collar and pulled 1323', 32#/Ft., H-40 casing. Left 225' 9-5/8" casing in well - 4-28-63. Top left and right nipple left in well rolled out (Flated) 5-2-63							
7", 23#/Ft., J-55 casing - 5389' set at 5358' (KB). Cemented to surface with 826 cu. ft. "Litepoz", 826 sacks Class A cement & 85 gal. "Cealment" (Latex Cement) - 5-4-63 - Dowell							
4½" 11.6 #/Ft., J-55 casing liner - 589' set from 5848' to 5250' (KB) Cemented with 700 gal. "Cealment" (Latex Cement) - 5-10-63 - Dowell							
2-3/8", 4.6#/Ft., J-55 Tubing 5208', and 1½" 2.75#/Ft., J-55 Tubing, 608' Suspended from National H-1 tubing hanger. 5-11-63							
<b>Perforations:</b>							
Oriskany: 4 Holes/Ft., 5,701'-5,717', 5,734'-5,746' - 5-9-63 - McCullough							
<b>Stimulation:</b>							
Oriskany: 1,000 gal 15% Super Mud Acid - 5-10-63 - Dowell							
Oriskany: 5,000 gal 15% Retarded Hcl; 5,000 gal 15% Regular Hcl - 7-11-63 - Dowell							
<b>Production:</b>							
Before running & cementing Liner - 49/10 W-2" =295 mcf							
After Perforating - Not tested							
After Acid treatment							
Final rock pressure							
Final Shut in Date:							

Date Oct 3, 1963  
APPROVED Atlantic Seaboard Corp. Owner  
By McCullough Supt  
(TTL)