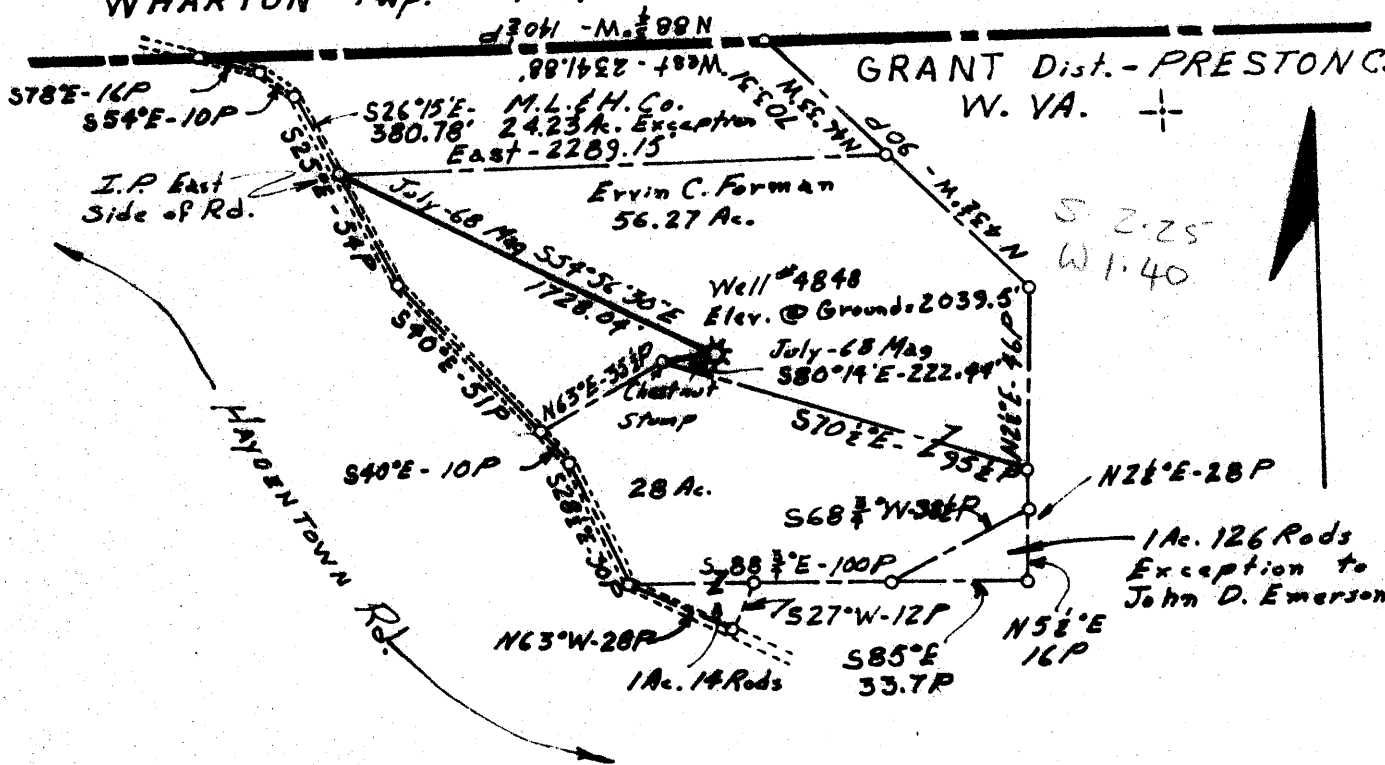


LATITUDE 39° 45' 00"

LONGITUDE 79° 40' 00"

WHARTON Twp. - FAYETTE Co. PENNA.

GRANT Dist. - PRESTON Co. W. VA. +



COAL OWNED BY Freeport Coal Co.

- NEW LOCATION
- RECONDITION
- DRILL DEEPER
- ABANDONMENT

"I, the undersigned, hereby certify that this map is correct to the best of my knowledge and belief and shows all the information required by paragraph 6 of the rules and regulations of the oil and gas section of the mining laws of West Virginia."
Minimum degree of accuracy is one part in 200.

Signed Robert J. Lohr - Pa. Reg. # 73796

COMPANY The Manufacturers Light & Heat Co.
 ADDRESS 800 Union Trust Bldg. Pgh. Pa. 15219
 FARM E. C. Forman
 MAP P-29-2 ACRES 26± LEASE NO. 30450
 WELL (FARM) NO. 1 SERIAL NO. 4848
 ELEVATION (SPIRIT LEVEL) 2039.5'
 QUADRANGLE Bruceston Mills NW
 COUNTY Preston DISTRICT Grant
 POINT OF PROVEN ELEVATION B.M. 52 R.H.P. - U.S.G.S.
Elev. = 2182'
 FILE NO. _____ DRAWING NO. Y-28-553
 DATE 7-12-68 SCALE 1" = 800'

STATE OF WEST VIRGINIA
 DEPARTMENT OF MINES
 OIL AND GAS DIVISION
 CHARLESTON
 WELL LOCATION MAP

FILE NO. PRES-130
 (Cancelled) 8-8-68

+ DENOTES LOCATION OF WELL ON UNITED STATES TOPOGRAPHIC MAPS, SCALE 1 TO 62,500. LATITUDE AND LONGITUDE LINES BEING REPRESENTED BY BORDER LINES AS SHOWN.
 - DENOTES ONE INCH SPACES ON BORDER LINE OF ORIGINAL TRACING.