

"I, the undersigned, hereby certify that this map is correct to the best of my knowledge and belief and shows all of the information required by Paragraph 5 of the rules and regulations of the Oil and Gas Section of the mining laws of West Virginia."

- NEW LOCATION.....
- DRILL DEEPER.....
- ABANDONMENT.....

Edward C. Caswell
 EDWARD C. CASWELL
 TEXAS REG. NO. 5998

COMPANY PHILLIPS PETROLEUM COMPANY
 ADDRESS BARTLESVILLE, OKLAHOMA
 FARM LESTER GUTHRIE, ET AL
 TRACT 1 ACRES 124 LEASE NO. 219-2481
 WELL (FARM) NO. G-1 SERIAL NO. _____
 ELEVATION (SPIRIT LEVEL) 1924.8'
 QUADRANGLE Brandonville 7.5 EC
 COUNTY PRESTON DISTRICT GRANT
 ENGINEER Edward C. Caswell
 ENGINEER'S REGISTRATION NO. 5998 - TEXAS
 FILE NO. _____ DRAWING NO. _____
 DATE AUGUST 20, 1968 SCALE 1" = 500'

STATE OF WEST VIRGINIA
 DEPARTMENT OF MINES
 OIL AND GAS DIVISION
 CHARLESTON

X

WELL LOCATION MAP
 FILE NO. PRES-131

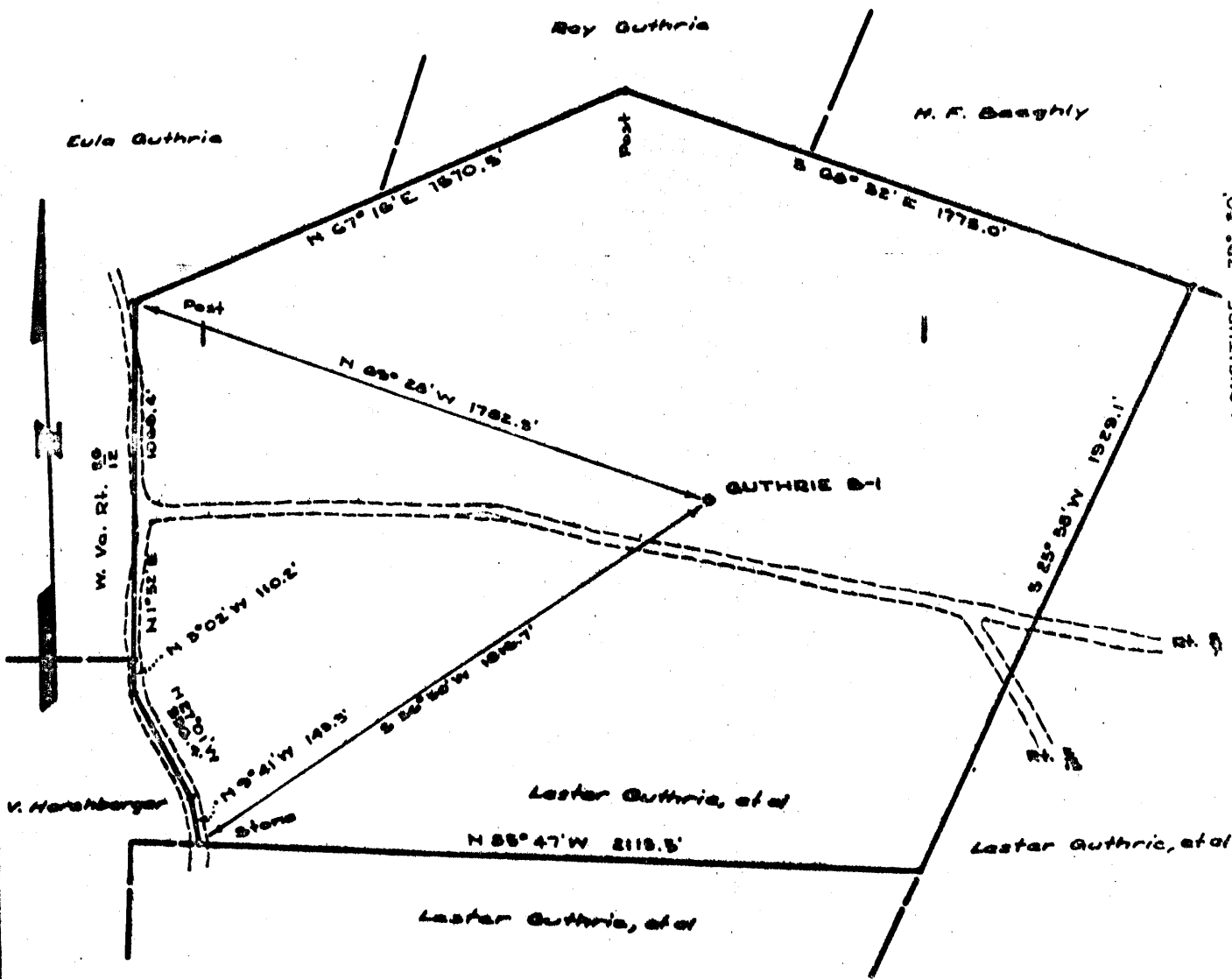
+ DENOTES LOCATION OF WELL ON UNITED STATES TOPOGRAPHIC MAPS, SCALE 1 TO 62,500. LATITUDE AND LONGITUDE LINES BEING REPRESENTED BY BORDER LINES AS SHOWN

- DENOTES ONE INCH SPACES ON BORDER LINE OF ORIGINAL TRACINGS.

Disc Well Hopewell Church // Deep Well (Hldbq) SEP 16 1968

LATITUDE 39° 40'

LONGITUDE 79° 50'



"I, the undersigned, hereby certify that this map is correct to the best of my knowledge and belief and shows all of the information required by Paragraph 5 of the rules and regulations of the Oil and Gas Section of the mining laws of West Virginia."

- NEW LOCATION
- DRILL DEEPER
- ABANDONMENT issued 11-1-71

Edward C. Caswell
 EDWARD C. CASWELL
 TEXAS REG. NO. 5798

COMPANY PHILLIPS PETROLEUM COMPANY
 ADDRESS BARTLESVILLE, OKLAHOMA
 FARM LESTER GUTHRIE, ET AL
 TRACT 1 ACRES 124 LEASE NO. 218-5481
 WELL (FARM) NO. B-1 SERIAL NO. _____
 ELEVATION (SPIRIT LEVEL) 1984.5'
 QUADRANGLE BRUCETON MILLS *EC*
 COUNTY PRESTON DISTRICT GRANT
 ENGINEER *Edward C. Caswell*
 ENGINEER'S REGISTRATION NO. 5798 - TEXAS
 FILE NO. _____ DRAWING NO. _____
 DATE AUGUST 20, 1968 SCALE 1" = 500'

STATE OF WEST VIRGINIA
 DEPARTMENT OF MINES

OIL AND GAS DIVISION
 CHARLESTON

WELL LOCATION MAP
 FILE NO. PRE5-131-P

+ DENOTES LOCATION OF WELL ON UNITED STATES TOPOGRAPHIC MAPS, SCALE 1 TO 62,500. LATITUDE AND LONGITUDE LINES BEING REPRESENTED BY BORDER LINES AS SHOWN

- DENOTES ONE INCH SPACES ON BORDER LINE OF ORIGINAL TRACING.

Orig - State of West Virginia

- 1 - B'ville
- 1 - Oklahoma City
- 1 - Sun Oil Company
- 1 - File

Form OG-10



STATE OF WEST VIRGINIA
DEPARTMENT OF MINES
OIL AND GAS DIVISION 2

- Rotary
- Spudder
- Cable Tools
- Storage

Quadrangle Bruceton Mills

Permit No. PRES-131

WELL RECORD

Oil or Gas Well Gas
(KIND)

Company Phillips Petroleum Company
Address Bartlesville, Oklahoma

Farm Guthrie "B" Acres 124
Location (waters) 22,125' W of Long 79°30' and
800' S of Lat 39°40'

Well No. 1 Elev. 1984.8'
District Grant County Preston

The surface of tract is owned in fee by Sandy Creek Fuel Corp.

Address Kingwood, W.Va.

Mineral rights are owned by Lester Guthrie, Etal

Address

Drilling commenced September 21, 1968
October 8, 1968

Drilling completed

Date Shot None From To

With

Open Flow /10ths Water in In

/10ths Merc. in In

Volume See reverse side Cu. Ft.

Rock Pressure lbs. hrs.

Oil bbls., 1st 24 hrs.

WELL ACIDIZED (DETAILS) w/1000 gals Acetic Acid
following cmntg of 4 1/2" csg.

WELL FRACTURED (DETAILS) See reverse side

RESULT AFTER TREATMENT (Initial open Flow or bbls.) See gas volume above

3,179,000
3,129 Mcf

ROCK PRESSURE AFTER TREATMENT See reverse side HOURS

Fresh Water 1207-1222 Feet

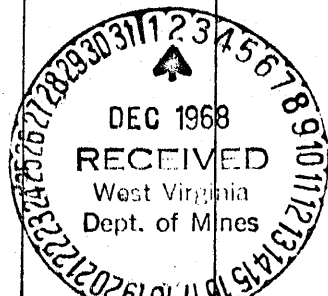
(Squeezed w/400 gals FWG gel)

Salt Water Feet

Producing Sand Huntersville, Chert

Depth

| Formation | Color | Hard or Soft | Top | Bottom | Oil, Gas or Water | Depth | Remarks |
|-------------------------------------|-------|--------------|------|--------|---------------------------------------|-------|----------------|
| DRILLER'S LOG: | | | | | FORMATION TOPS-GAMMA RAY LOG: E1.2000 | | |
| Surface soil, sand rock | | | 0 | 50' | Tully Lime | | 7404'-15-7365' |
| Shale | | | 50 | 104 | Onondaga Lime | | 7892'-15-7877' |
| Sand & Shale | | | 104 | 874 | Onondaga Chert | | 7906'-15-7491' |
| Red Bed Shale | | | 874 | 964 | Oriskany Sand | | 8052'-15-8087' |
| Sand & Red Rock | | | 964 | 1031 | Helderberg Lime | | 8156'-15-8141' |
| Lime & Shale | | | 1031 | 1174 | | | |
| Lime & Sand | | | 1174 | 1241 | | | |
| Shale & Sand | | | 1241 | 1356 | | | |
| Shale & Lime | | | 1356 | 1850 | | | |
| Red Shale & Lime | | | 1850 | 2098 | | | |
| Lime & Shale | | | 2098 | 6787 | | | 7892 |
| Shale | | | 6787 | 7401 | | | 1985 |
| Lime | | | 7401 | 7482 | | | 5907 |
| Shale & Lime | | | 7482 | 7905 | | | |
| Chert - Huntersville | | | 7905 | 8068 | | | |
| Sand & Lime - Oriskany & Helderberg | | | 8068 | 8186 | | | |
| Lime | | | 8186 | 8206 | | | |
| Total Depth | | | 485 | 8206 | | | |
| PBTD | | | | 8172 | | | |



| Formation | Color | Hard or Soft | Top 2 | Bottom | Oil, Gas or Water | Depth Found | Remarks |
|--------------------------------------------------------------------------------------------------------------------------------------------------------------------------------------------------------------------------------------------------------------------------------------------------------------------------------------------------------------------------------------------------------------------------------------------------------------------------------------------|-------|--------------|-------|--------|-------------------|-------------|-------------------------------------------------------------------------------------------|
| On Oct. 12, 1968, Halliburton frac'd Chert down 4 1/2" csg thru perf (7910-8000') w/55,000# 20-40 sand, 14,000# WG-6, 300# CW1, 60,000 gals 3% gelled acid - total fluid used: 65,150 gallons; treating rate 40.3 BPM. MP 5000# Min Press 4400#. Instant SIP 3700#, 5 mins SIP 3550#. Flowed well to pit. Ran 2-3/8" OD tbg set at 8141'. Flowed 16 hrs and SI. 1-hour SITP 550#, SICP 1174#; 2-hour SITP 800#, SICP 1800#; 5-hour SITP 1056#, SICP 2650#; 13-hour SITP 1200#, SICP 3100#. | | | | | | | |
| October 13 through 29 | | | | | | | - Well SI except to blow well to pit for short periods to clean up. SITP 3150# SICP 3450# |
| October 30 | | | | | | | - SITP 3150# SICP 3450#. Took four-point gas potential test. |
| Oct. 31 - Nov. 5 | | | | | | | - Well SI. Calculated test - slope less than .5. Will retest. |
| Nov. 5 - Nov. 25 | | | | | | | - Well, SI. Prepare to retest. |
| Nov. 26 - | | | | | | | - Well, SI. CAOPF 3,129 MCFPD. Wait on market for gas. |

Date November 26, 19 68

APPROVED Phillips Petroleum Company, Owner

By M. Stagle Dist. Supt.
(Title)