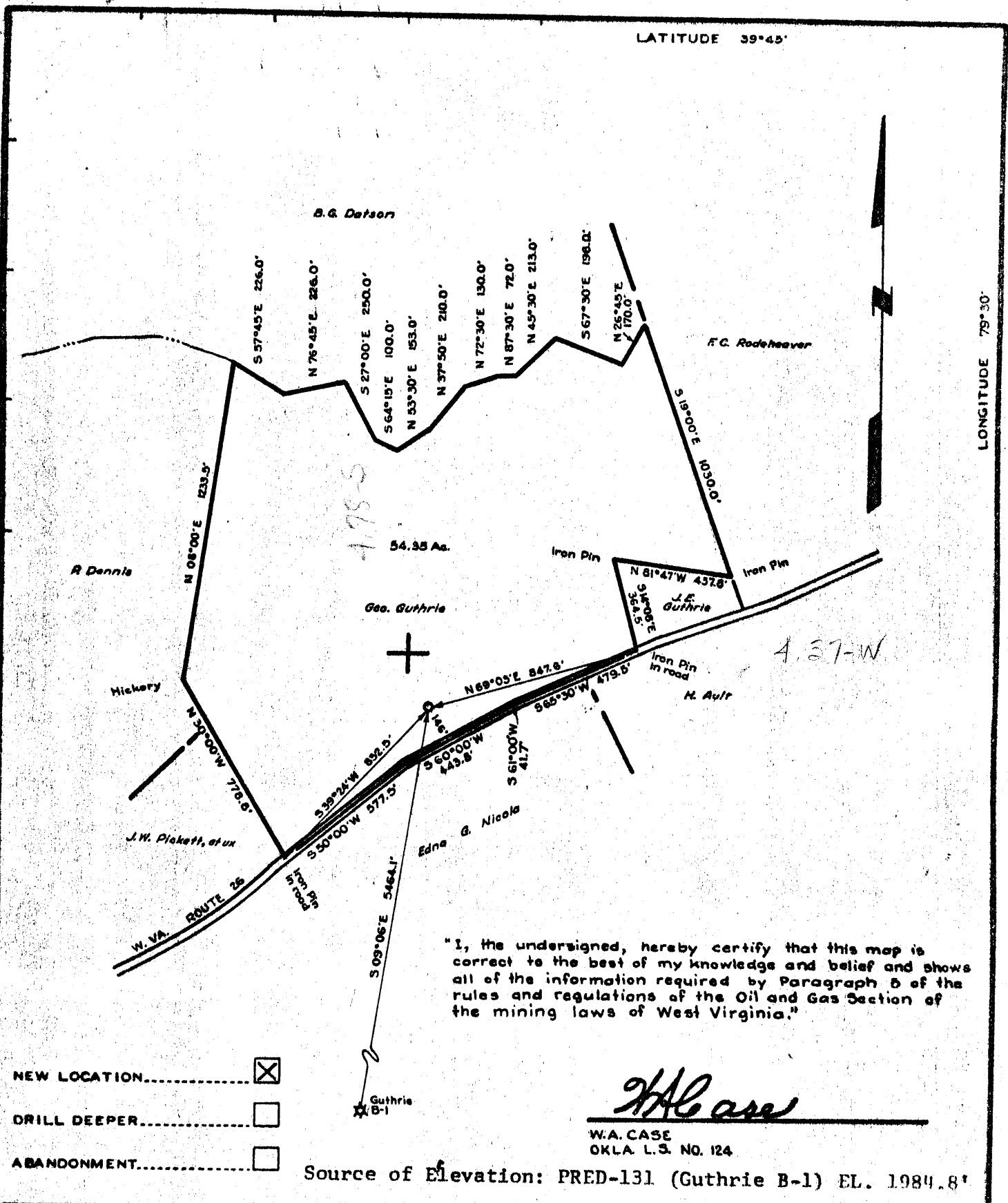


6/15/67 CEN



- NEW LOCATION.....
- DRILL DEEPER.....
- ABANDONMENT.....

Source of Elevation: PRED-131 (Guthrie B-1) EL. 1984.8'

*W.A. Case*  
 W.A. CASE  
 OKLA. L.S. NO. 124

COMPANY 1968 UNITED PRODUCERS FUNDS, INC  
 P. O. BOX 3315  
 ADDRESS 945 BOND ST., EVANSVILLE, INC. 4701  
 FARM George F. Guthrie, et al  
 TRACT \_\_\_\_\_ ACRES 54.35 LEASE NO. \_\_\_\_\_  
 WELL (FARM) NO. 1 SERIAL NO. \_\_\_\_\_  
 ELEVATION (SPIRIT LEVEL) 1967.5'  
 QUADRANGLE BRUCETON MILLS *NE*  
 COUNTY PRESTON DISTRICT GRANT  
 ENGINEER *W.A. Case*  
 ENGINEER'S REGISTRATION NO. OKLA. L.S. NO. 124  
 FILE NO. \_\_\_\_\_ DRAWING NO. \_\_\_\_\_  
 DATE 5-20-69 SCALE 1" = 500'

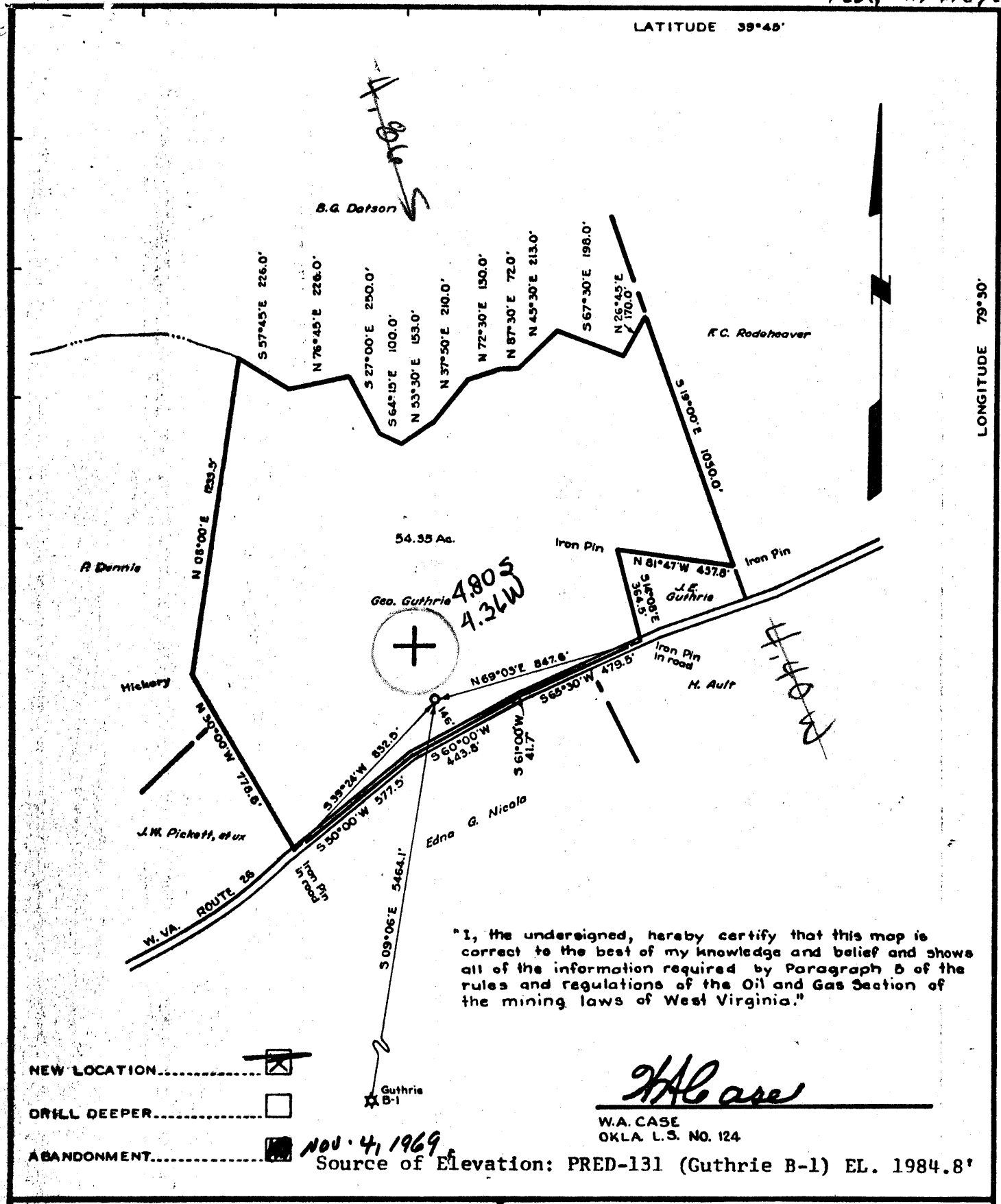
STATE OF WEST VIRGINIA  
 DEPARTMENT OF MINES  
 OIL AND GAS DIVISION  
 CHARLESTON

WELL LOCATION MAP  
 FILE NO. PRES-137

+ DENOTES LOCATION OF WELL ON UNITED STATES TOPOGRAPHIC MAPS, SCALE 1 TO 62,500. LATITUDE AND LONGITUDE LINES BEING REPRESENTED BY BORDER LINES AS SHOWN  
 - DENOTES ONE INCH SPACES ON BORDER LINE OF ORIGINAL TRACING.

LATITUDE 39°48'

LONGITUDE 79°50'



- NEW LOCATION
- DRILL DEEPER
- ABANDONMENT

"I, the undersigned, hereby certify that this map is correct to the best of my knowledge and belief and shows all of the information required by Paragraph 5 of the rules and regulations of the Oil and Gas Section of the mining laws of West Virginia."

*W.A. Case*  
 W.A. CASE  
 OKLA. L.S. NO. 124

NOV 4, 1969  
 Source of Elevation: PRED-131 (Guthrie B-1) EL. 1984.8'

COMPANY 1968 UNITED PRODUCERS FUNDS, INC  
 P. O. BOX 3315  
 ADDRESS 945 BOND ST., EVANSVILLE, INC, 4701  
 FARM George F. Guthrie, et al  
 TRACT \_\_\_\_\_ ACRES 54.35 LEASE NO. \_\_\_\_\_  
 WELL (FARM) NO. 1 SERIAL NO. \_\_\_\_\_  
 ELEVATION (SPIRIT LEVEL) 1987.5'  
 QUADRANGLE BRUCETON MILLS NE  
 COUNTY PRESTON DISTRICT GRANT  
 ENGINEER W.A. Case  
 ENGINEER'S REGISTRATION NO. OKLA. L.S. NO. 124  
 FILE NO. \_\_\_\_\_ DRAWING NO. \_\_\_\_\_  
 DATE 5-20-69 SCALE 1" = 500'

STATE OF WEST VIRGINIA  
 DEPARTMENT OF MINES  
 OIL AND GAS DIVISION  
 CHARLESTON  
 WELL LOCATION MAP  
 FILE NO. PRES-137-P  
 + DENOTES LOCATION OF WELL ON UNITED STATES TOPOGRAPHIC MAPS, SCALE 1 TO 62,500. LATITUDE AND LONGITUDE LINES BEING REPRESENTED BY BORDER LINES AS SHOWN  
 - DENOTES ONE INCH SPACES ON BORDER LINE OF ORIGINAL TRACING.

*Deep Well*  
 5-0 Brandonville (Hopswell Church) 334 NOV 17 1969



STATE OF WEST VIRGINIA  
DEPARTMENT OF MINES  
OIL AND GAS WELLS DIVISION II

Rotary   
 Spudder  E. Well  
 Cable Tools  *Dry*  
 Storage  11/12/69  
 abandoned  
 Oil or Gas Well *gas & salt wt*  
 (KIND)

39° 15'  
 Quadrangle *Bruceton 3-51*  
 Permit No. *Pres 137*

WELL RECORD

Company <i>1968 United Producers Funds, Inc.</i>	Casing and Tubing	Used in Drilling	Left in Well	Packers
Address <i>220 N. W. 4th St., Evansville, Ind.</i>	Size			
Farm <i>George Guthrie</i> Acres	16			Kind of Packer
Location (waters) <i>1982 KB</i>	13 <i>3/8"</i>	51	51	50 SX.
Well No. <i>1</i> Elev. <i>1967 Gr.</i>	10 <i>9-5/8"</i>	1031	1031	350 SX. Size of
District <i>Grant</i> County <i>Preston</i>	8 1/4			Depth set
The surface of tract is owned in fee by <i>George Guthrie</i>	6 5/8			
Address <i>Bruceton Mills, W. Va.</i>	5 3/16			225 SX.
Mineral rights are owned by <i>George Guthrie</i>	4 1/2	8268	1773	23 shots Perf. top 7995
Address <i>Bruceton Mills, W. Va.</i>	3			Perf. bottom 8025
Drilling commenced <i>6/21/69</i>	2			Perf. top
Drilling completed <i>7/8/69</i>	Liners Used			Perf. bottom
Date Shot From To				
With				

Attach copy of cementing record.

CASING CEMENTED SIZE No. Ft. Date

Amount of cement used (bags)

Name of Service Co.

COAL WAS ENCOUNTERED AT FEET INCHES

FEET INCHES FEET INCHES

FEET INCHES FEET INCHES

WELL ACIDIZED (DETAILS)

WELL FRACTURED (DETAILS) *Frac through perforations 7995-8025 using 28,780 gallons acid jell with approx. 1 pound sand per gallon.*

RESULT AFTER TREATMENT (Initial open Flow or bbls.) *Well loaded up with salt water - small show gas.*

ROCK PRESSURE AFTER TREATMENT HOURS

Fresh Water Feet Salt Water *in Huntersville* Feet

Producing Sand Depth

Formation	Color	Hard or Soft	Top	Bottom	Oil, Gas or Water	Depth	Remarks
Shale & Sand			0	1020			
Sand			1020	1065			
Shale & Sand			1065	1100			
Sand			1100	1145			
Shale			1145	1160			
Sand			1160	1176			
Shale			1176	1220			
Sand			1220	1258			
Shale			1258	1298			
Sand			1298	1365			
Shale			1365	1387			
Shale-Sand streaks			1387	2061			
Broken Sand			2061	2196			
Sand - Shale Streaks			2850	2930			
Shale			2930	3190			
Sand			3190	3205			
Shale - Sand Streaks			3205	7408			

(over) →

RECEIVED  
 DEC 19 1969  
 OIL & GAS DIVISION  
 DEPT. OF MINES

Formation	Color	Hard or Soft	Top //	Bottom	Oil, Gas or Water	Depth Found	Remarks
✓ Fully Lime			7408	7440			
Shale			7440	7980			
✓ Onondaga Lime Zone			7980	7991			
✓ Huntersville Chert			7991	8106			No show gas while drilling
✓ Shale - <i>NEST MORE</i>			8106	8131			
✓ Oriskany Sand			8131	8241			
✓ Helderberg Lime			8241	8270 TD			
				485			

Note: Electric Logs of Guthrie No. 1 are as follows:

- Induction Log
- Compensated Formation Density Log
- Continuous Dipmeter Log
- Directional Log
- Perforating Depth Control Log

Date December 16, 1969

APPROVED 1968 United Producers Funds, Inc; Own

By *L. G. Vaughan*  
L. G. Vaughan, Vice President  
(Title)