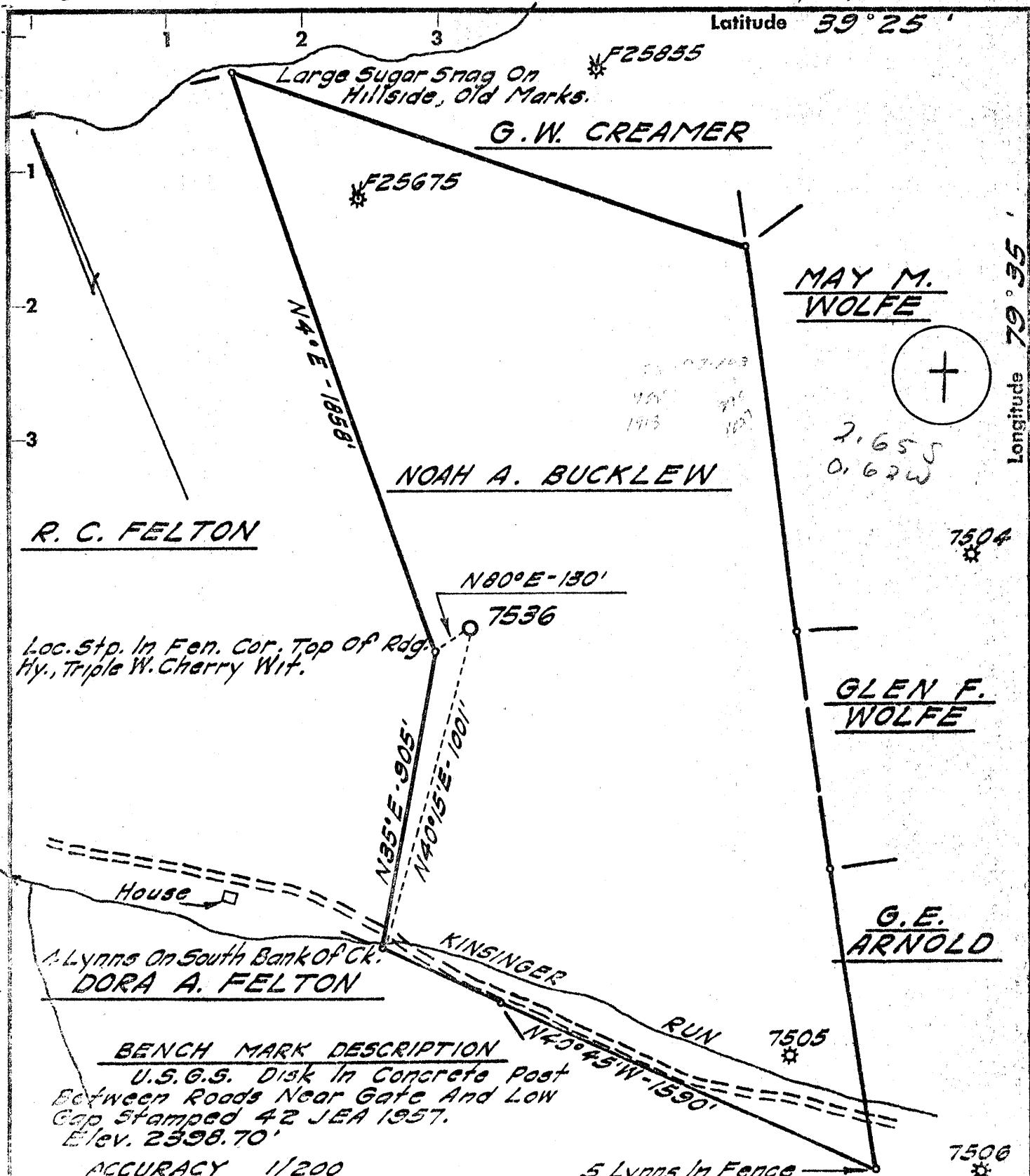


3/22/71 CEN

Latitude 39° 25'



- Fracture
- Before 6/5/29
- New Location
- Drilleeper
- Part
- Abandonment

I, the undersigned, hereby certify that this map is correct to the best of my knowledge and belief and shows all the information required by Paragraph 5 of the Rules and Regulations of the Oil and Gas Section of the Mining Laws of West Virginia.
 The accuracy of this survey is within the limits and as prescribed in Paragraph 5 by the Oil and Gas Division of the Department of Mines Regulations.

Company ATLANTIC SEABOARD CORP.
 Address CHARLESTON, W. VA.
 Farm NOAH A. BUCKLEW
 Tract _____ Acres 77 Lease No. AS-486
 Well (Farm) No. _____ Serial No. 7536
 Elevation (Spirit Level) 2070.68'
 Quadrangle KINGWOOD
 County PRESTON District UNION
 Engineer Phuon R. Henderson
 Engineer's Registration No. 2330
 Fil. No. 172-129 Drawing No. _____
 Date 2-23-71 Scale 1" = 400'

STATE OF WEST VIRGINIA
 DEPARTMENT OF MINES
 OIL AND GAS DIVISION
 CHARLESTON

WELL LOCATION MAP
 FILE NO. PRES-156

★ Denotes location of well on United States Topographic Maps, scale 1 to 62,500 latitude and longitude lines being represented by border lines as shown.
 - - Denotes one inch spaces on border line of original tracing.

9-0 ~~66~~ Terra Alta (280)

Deep Well (Oriskany)
 MAR 29 1971 MAR 29 1971



RECEIVED

JAN 26 1972

STATE OF WEST VIRGINIA
DEPARTMENT OF MINES & GAS
OIL AND GAS WELLS DIVISION

- Rotary
- Spudder
- Cable Tools
- Storage

Quadrangle Kingwood

Permit No. Pres. 156

WELL RECORD

Oil or Gas Well Gas
(KIND)

Company Columbia Gas Transmission Corporation
Address P. O. Box 1067, Elkins, West Virginia
Farm Noah A. Bucklew Acres 77
Location (waters) Kinsinger Run
Well No. X-76-S 7536 Elev. 2071
District Union County Preston
The surface of tract is owned in fee by _____
Address _____
Mineral rights are owned by _____
Address _____

Drilling commenced April 24, 1971
Drilling completed May 6, 1971
Date Shot _____ From _____ To _____
With _____

Open Flow _____ /10ths Water in _____ Inch
_____ /10ths Merc. in _____ Inch
Volume Show _____ Cu. Ft.
Rock Pressure _____ lbs. _____ hrs.
Oil _____ bbls., 1st 24 hrs.
WELL ACIDIZED (DETAILS) (See Reverse Side)
WELL FRACTURED (DETAILS) _____

Casing and Tubing	Used in Drilling	Left in Well	Packers
Size	Ground	Level	Kind of Packer
16			
13 3/8"	32'	32'	
10			Size of
1 3/4 9 5/8"	2089'	2089'	
7/8 7"	5138'	5138'	Depth set
5 3/16			
4 1/2			
3			Perf. top (See Reverse)
2 3/8"	5305'	5305'	Perf. bottom Side
Liners Used			Perf. top
			Perf. bottom

Attach copy of cementing record.
CASING CEMENTED _____ SIZE _____ No. Ft. _____ Date _____
Amount of cement used (bags) See Reverse Side
Name of Service Co. Halliburton
COAL WAS ENCOUNTERED AT None FEET _____ INCHES _____
FEET _____ INCHES _____ FEET _____ INCHES _____
FEET _____ INCHES _____ FEET _____ INCHES _____

RESULT AFTER TREATMENT (Initial open Flow or bbls.) 1,278 Mcf 1,278,000
ROCK PRESSURE AFTER TREATMENT 1900# HOURS 1
Fresh Water _____ Feet _____ Salt Water _____ Feet _____
Producing Sand _____ Depth _____

Formation	Color	Hard or Soft	Top	Bottom	Oil, Gas or Water	Depth	Remarks
Shale and Siltstone			0'	4540'	Measured	from K.B.	
Tully Lime			4540'	4565'			
Shale			4565'	4985'			
Onondaga Lime			4985'	5004'			
Chert - Huntersville			5004'	5136'			
Shale - NEED MORE			5136'	5145'	4985	5145	5276
Oriskany Sand			5145'	5276'	2071	2071	2071
Helderberg Lime			5276'		2914	3074	3205
Total Depth				5319'			

Formation	Color	Hard or Soft	Top	Bottom	Oil, Gas or Water	Depth Found	Remarks
NOTE:							
13 3/8"	48#/ft., H-40, casing						cemented to surface with 25 sacks of neat cement plus 2% CaCl. April 24, 1971. 32' ground level, 49' kelly bushing.
9 5/8"	36#/ft., K-55, casing						cemented to surface with 605 sacks of Gilsonite plus 2% CaCl. April 28, 1971. Casing set at 2089' ground level, 2106' kelly bushing, 2086' threads off, 2101' threads on.
7"	23#/ft., K-55 Seal-lok casing						cemented in 1000' with 120 cu. ft. of regular neat cement with 1890 lbs. of Gilsonite added. Tailed in with 375 gallons Cealment. May 3, 1971. Gel drilling mud to surface. Casing set 6' in Oriskany sand. Casing set at 5138' ground level, 5155' kelly bushing, 5167' threads off, 5211' threads on.
2 3/8"	4.6#/ft., J-55, Seal-lok tubing						run to total depth. (1) Baker Model "J" ported seating nipple, (1) Baker BFC Model "L" sliding sleeve. Sliding sleeve is 422' off bottom. May 6, 1971. 5305' ground level, 5824' kelly bushing, 5819' threads off, 5866' threads on.
Perforations:							
Chert (5010'-5090') with 160, 3 1/2" glass jets shots. Oriskany sand, open hole. Basin Surveys Inc., May 5, 1971.							
Logging:							
Gamma Ray - P.D.C. (4500'-5318") May 5, 1971.							
Stimulation:							
Halliburton stimulated both the Oriskany and Chert pays at separate times.							
Oriskany: (1) drum Baroids B-11, 500 gallons 20% HCL acid, 30 gallons Pen-5, 2700# average pressure, 7 BPM, total volume 650 barrels of fresh water.							
Set Baker retrievable bridge plug at 5120'.							
Chert: (1) drum Baroids B-11, 500 gallons 20% HCL acid, 30 gallons Pen-5, 2600# average pressure, 9 BPM, total volume 750 barrels of fresh water.							

Date January 20, 1972

APPROVED Columbia Gas Transmission Corporation Owner

By [Signature]
(Title)
Production and Storage Superintendent