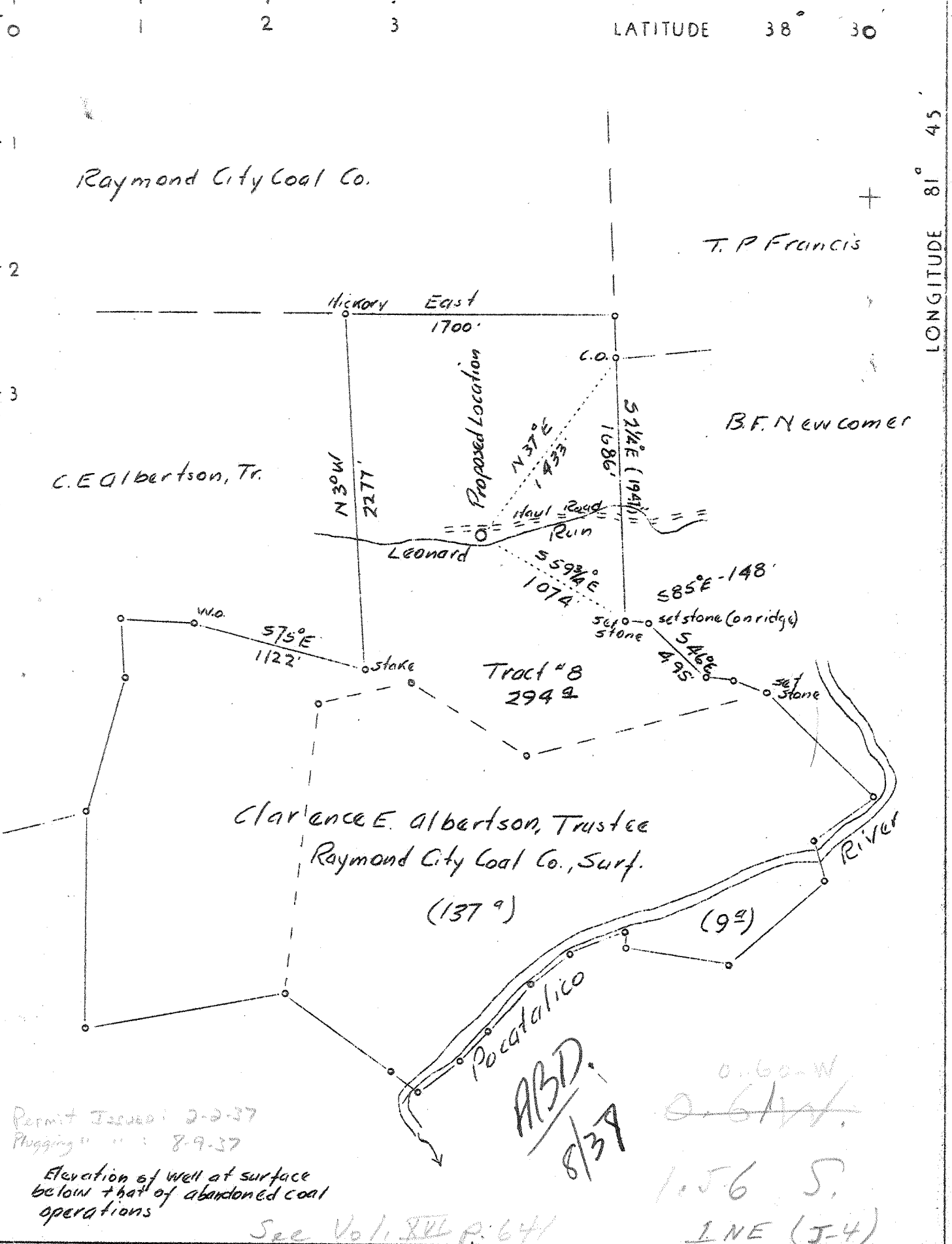


4 P



Permit Issued: 2-2-37
 Plugging " " : 8-9-37
 Elevation of well at surface
 below that of abandoned coal
 operations

ABSD.
 8/39

0.60-W
 0.61-W
 1.56 S.
 1 NE (J-4)

See Vol. 1, P. 64

Company	West Virginia Gas Corp
Address	401 Union Bldg., Charleston W. Va
Farm	C. E. Albertson, Trustee
Tract	8 Acres 294 Lease No. 293
Well (Farm) No.	5 Serial No. 0-21
Elevation (Spirit Level)	628.5 Stadia
Quadrangle	St. Albans Line NE
County	Putnam District Pocatalico
Engineer	Robert S. Hyde
Engineer's Registration No.	646
File No.	3 Drawing No. W.O.176
Date	1/21/37 Scale 1" = 800'

STATE OF WEST VIRGINIA
 Department of Mines
 OIL AND GAS DIVISION
 Charleston

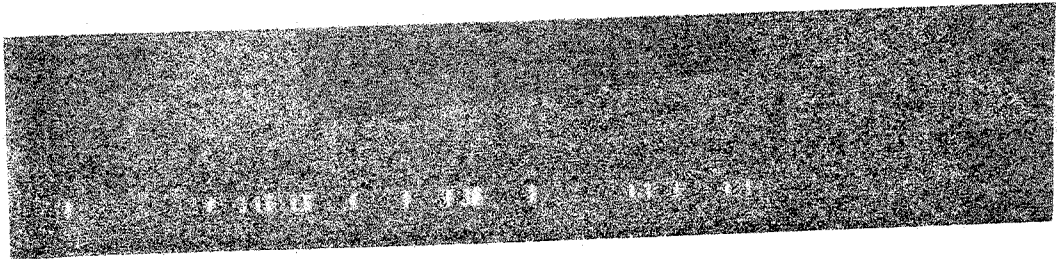
WELL LOCATION MAP
 File No. PUT-33-P

+ Denotes location of well on U.S. Topographic Maps, scale 1 to 62,500 latitude and longitude lines being represented by border lines as shown.

— Denotes one inch line of original t on border

See Note

Done



Clarence E. Albertson, Trustee, No. 5 (0-21) Well.
(Raymond City Coal Company, Surface.)

Pocatalico District, Putnam County, W. Va.

By West Virginia Gas Corporation.

Permit No. Put-33.

Elevation, 627.5' L.

116 M. cu. ft. gas after shot; final test, 35 M. cu. ft. gas; R. P., 600 lbs.;

dry hole.

Located 1.52 mi. S. of 38° 30' and 0.8 mi. W. of 81° 45'—NE—St.
Albans Quadrangle.

On north side of Leonard Run.

3.0 mi. E. of Raymond City; 1.26 mi. N. of Lanham.

	Top.	Bottom.	Thickness.	Elevation (top)
Big Lime -----	1495	1634	139	— 867
Big Injun Sand -----	1652	1700	48	—1024
Berea Sand -----	2130	2148	18	—1502
Corniferous Lime -----	4516	4620	104	—3888
Oriskany Sand -----	4620	4646	26	—3992

Thickness, Devonian Shales, 2368 feet. Total depth, 4650'.
Remarks: Completed July 17, 1937. Shot at 4620-40' and acidized.
Water, 1042'. Hole full water, 1655'. Show of oil, 1655'.
Oriskany gas, 4620' and 4633'.

C. E. ALBERTSON, ~~MAN~~ TRUSTEE, NO 5 WELL. (0-21).
 (RAYMOND CITY COAL CO., SURFACE)

DRY HOLE

Pocatalico District, Putnam County, W. Va. D
 By W. Va. Gas Corporation, Box 1433, Charleston, W. Va.
 Drilled under permit Put-33.
 Commenced March 6, 1937; completed, July 17, 1937.
 Plugged and abandoned August 16, 1937.
 Elevation, 627.5' L.
 Water, 1042'. Show of oil, 1655'. Hole full water, 1655'.
 Gas, 4620', 2/10 W. in 1"; gas, 4633', 12/10 W. in 1".
 Shot from 4620 to 4640' on July 17, 1937, with 50 qts.
 15 min. after shot, 116 M.; 30 min. after shot, 106 M.; 45 min. after
 shot, 82 M.; final test, 35 M.
 24-hr. rock pressure, 600# (head leaking).
 Later treated with 700 gal. acid - sand contained considerable lime -
 but with no increase in volume.
 Record to RCT from J. E. Billingsley, Geologist, W. Va. Gas Corp.,
 Box 1433, Charleston, W. Va., April 1, 1943.
 13" casing, 23'; 10", 298'; 8⁵/₈", 1611'; 5¹/₂", 4570'.

	Top.	Bottom.
Surface	0	20
Rock	20	30
Red mud	30	60
Blue slate	60	100
Red rock	100	140
Blue slate	140	180
Lime shell	180	225
Red rock	225	250
Blue slate	250	275
Sand	275	345
White slate	345	450
Sand	450	460
White slate	460	515
White sand	515	530
Slate	530	545
Coal	545	548
Sand	548	660
Black slate and shell	660	680
Sand	680	693
Slate and shells	693	890
Sand	890	910
Black slate	910	953
Sand	953	990
Slate	990	995
Slate and sand	995	1398
Slate	1398	1406
Maxton Sand	1406	1450
Slate	1450	1465
Little Lime	1465	1495
Big Lime	1495	1634
Slate	1634	1652
Big Injun Sand	1652	1700
Slate	1700	1703
Sand	1703	1755
Black lime	1755	1820
Slate	1820	1822
Black lime	1822	1860
Slate and shell	1860	2120
Brown shale	2120	2130

(OVER)

C. E. ALBERTSON, TRUSTEE, NO. 5 WELL (0-21). (Contd.)

	Top.	Bottom.
✓ Berea Sand	2130	- 2148
Shells	2148	- 2168
Slate and shells	2168	- 2395
Lime shell	2395	- 2442
Slate and shell	2442	- 3345
Brown shale - 441	3345	- 3395
White slate	3395	- 3445
Brown shale	3445	- 3465
White slate	3465	- 3730
Brown shale	3730	- 3860
White slate	3860	- 4280
Brown shale	4280	- 4445
Slate and shell	4445	- 4450
Brown shale	4450	- 4475
Black shell - MARSHALLS	4475	- 4516
✓ Corniferous Lime	4516	- 4620
✓ Oriskany Sand, white	4620	- 4640
Oriskany Sand, dark	4640	- 4646
Gray lime - WILBERG	4646	- 4650
Total depth		4650

485