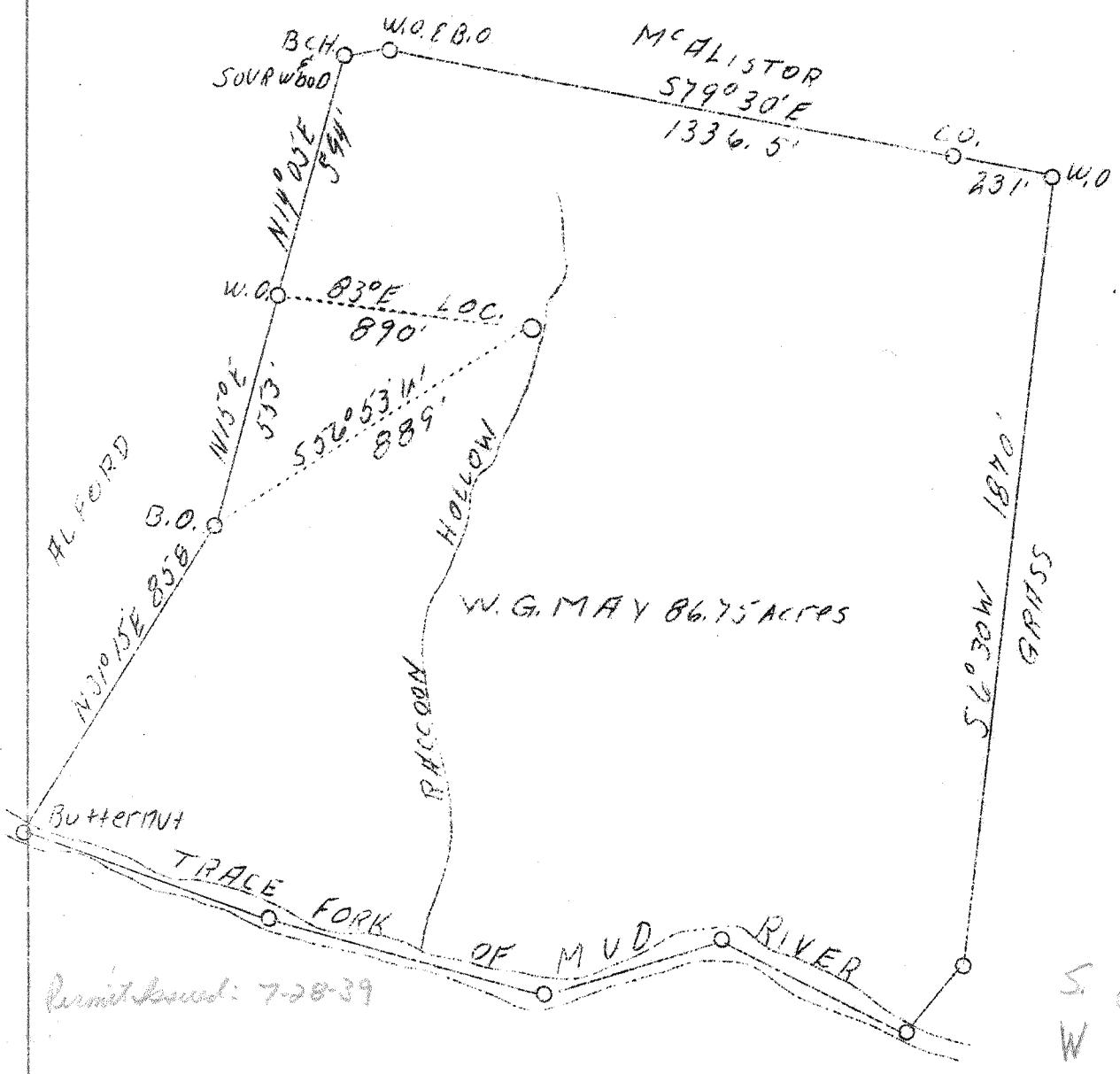


AM

P

LATITUDE 38°20' +

LONGITUDE 81°55'



Permit based: 7-28-39

S 0.12
W 0.68

Vol. XVI, p. 636

SURVEY MADE BY C.D. AMICK (CIVIL ENG.)
COAL NOT OPERATED 9 NE (J-4)

Drill Deeper

Company	Reishman Oil & Gas Co.
Address	Charleston, W. Va.
Farm	W. G. May
Acres	86.75
Well (Farm) No.	1
Elevation (SL)	678.10
Quadrangle	St. Albans SW
County	Putnam
District	Curry
Engineer	C. E. Krebs
Eng. Reg. No.	9
File No.	11.628
Date	July 10, 1939
Scale	1" = 400'

STATE OF WEST VIRGINIA
Department of Mines
OIL & GAS DIVISION
Charleston

WELL LOCATION MAP

File No. PUT-50

x Denotes location of well on U. S. Topographic Maps, scale 1 to 62,500, latitude and longitude lines being represented by border lines as shown.

- Denotes one inch spaces on border line of original tracing.

3-6-211

Deep Well

WEST VIRGINIA DEPARTMENT OF MINES

OIL & GAS DIVISION

WELL RECORD

Permit No. Put-50

Gas Well

St. Albans Quad.

CASING & TUBING

Company	Reishman Oil & Gas Co.	10	31	31
Address	1217 Lewis St., Charleston, W. Va.	8-1/4	675	None
Farm	Wm. Grass (Now W.G. May) ACRES 86	6-5/8	1349	None
Location	Raccoon Branch - Trace Fork	5-3/16	1600	1600
Well No.	1 ELEV. 678.10	2	4034	4034
District	Curry - Putnam County			
Surface & Mineral	W. G. May, St. Albans, W. Va.			Packer - Spang Anchor
Commenced	July 22, 1939			16" Rubber
Completed	Sept. 1, 1939			Size - 4'
Shot	Not shot			Depth Set - 3004
Open Flow	37/10ths Water in 2 inch			Perf. Top - 3878
Volume	293,000 c.f.			" bot. - 3910
Rock Pressure	755 lbs. 24 hrs.			" top - 3943
Oil	None			" bot. - 3974
Water	-			4005 to 4038

Formation Color & Top Base Result		Formation Color & Top Base Result	
Black Lime	2042 2210	Brown Shale	3910 3934
Lime, Shells & Slate	2210 2227	Gray Slate	3934 3945
Shelly Slate	2227 2230	Brown Shale	3945 3987
Lime Shell	2230 2237	Black Shale	3987 4037
Slate	2237 2261	Corniferous Lime	4037 4038
Lime	2261 2285	Total Depth	4038
Slate	2285 2288		
Lime Shell	2288 2302		
Slate & Shells	2302 2496		
White Slate	2496 2750		
Dark Slate	2750 2970		
Slate & Shells	2970 2980		
Lime Slate	2980 2990		
Slate & Shells	2990 2997		
Hard Lime Shell	2997 3006		
Slate & Lime Shells	3006 3054		
Slate & Shells	3054 3078		
Lime Shell	3078 3086		
Slate & Shells	3086 3190		
Lime Shell	3190 3198		
Brown Shale	3198 3230 G 3198		
Black Lime & Slate h	3230 3242		
Slate	3242 3249		
Lime Shell	3249 3255		
Slate & Shells	3255 3264		
Brown Shale	3264 3272		
Lime Shell	3272 3286		
Slate & Shell	3286 3290		
Brown Shale	3290 3302		
Black Lime	3302 3309		
Slate & Shells	3309 3320		
Brown Shale	3320 3337 G 3334		
Gray Limoy Shale h	3337 3341		
Shale & Dark Slate	3341 3354		
Brown Shale	3354 3420 G 3373 to 3387		
Brown Shale & Shells	3420 3428		
Gray & Brown Shale	3428 3443		
Brown Shale	3443 3480		
Slate & Shale	3480 3487 G 3480 to 3495		
Brown Shale	3487 3530		
Gritty Lime & Shale	3530 3535		
Brown Shale	3535 3590 G 3535 to 3554		
White Slate & Lime	3590 3713		
Broken Shale	3713 3720		
Gray Slate	3720 3816		
Dark Slate	3816 3828		
Gray Sl to	3828 3910		