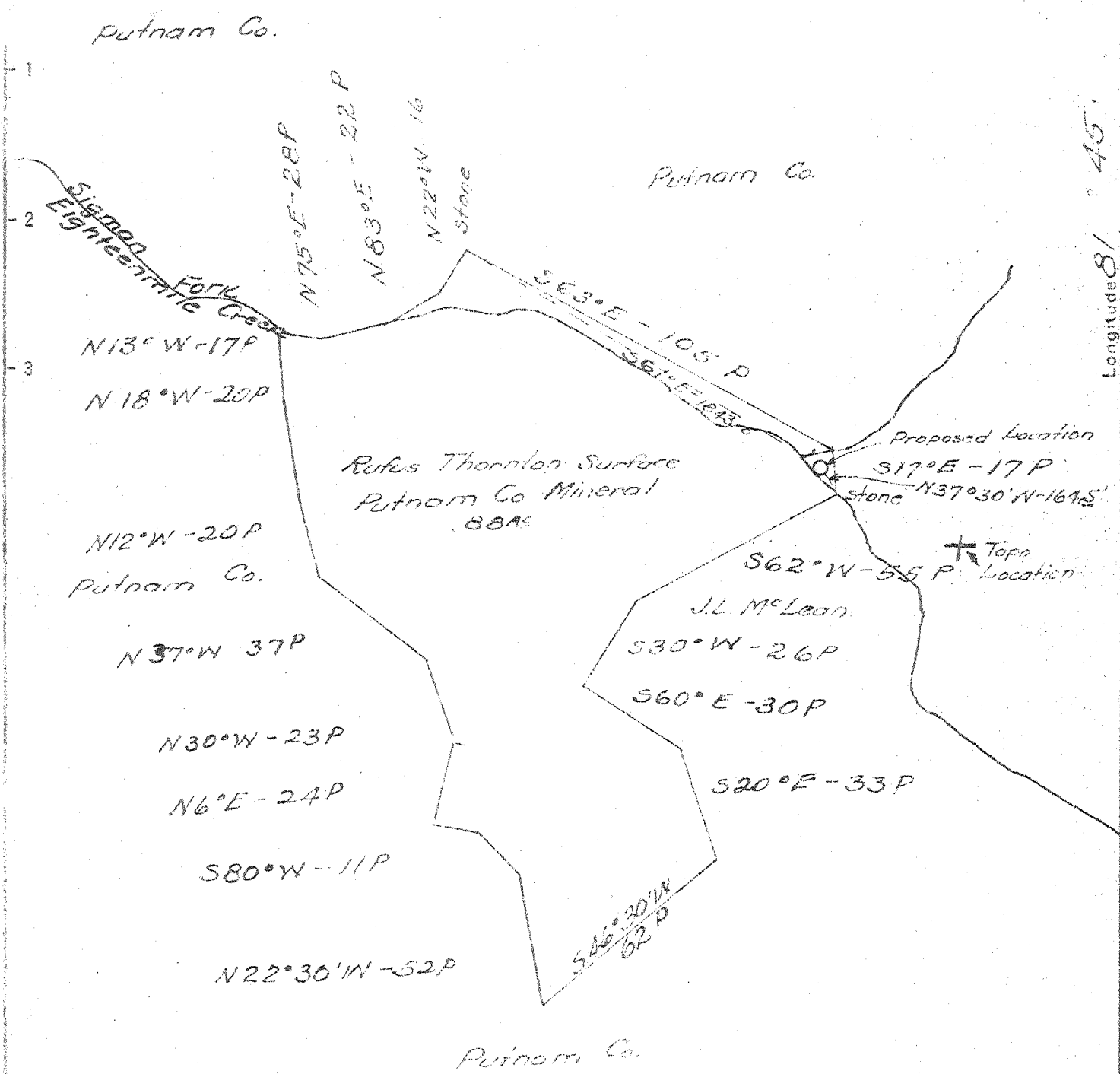


Latitude 35° 40'

Longitude 81° 45'



4.37 S.
1.08 W.

New Location X
 Drill Deeper
 Abandonment

6 SE (I-4)

Company Godfrey L Cabot Inc.
 Address 300 Union Bldg Charleston W Va
 Farm The Putnam Co.
 Tract _____ Acres 2200 Lease No. 3-464
 Well (Farm) No. 40 Serial No. 1195
 Elevation (Spirit Level) ~~685.74~~ 714'
 Quadrangle Winfield - EC
 County Putnam District Union
 Engineer Ray Boston
 Engineer's Registration No. _____
 File No. _____ Drawing No. _____
 Date 11-17-45 Scale 1" = 660'

STATE OF WEST VIRGINIA
 DEPARTMENT OF MINES
 OIL AND GAS DIVISION
 CHARLESTON

WELL LOCATION MAP
 FILE NO. PUT-324

+ Denotes location of well on United States Topographic Maps, scale 1 to 62,500, latitude and longitude lines being represented by border lines as shown.
 - Denotes one inch spaces on border line of original tracing.

Deep Well

WEST VIRGINIA DEPARTMENT OF MINES
OIL & GAS DIVISION
W E L L R E C O R D

Permit No. Put 324
Winfield Quad.

Gas Well
CASING & TUBING

Company	Godfrey L. Cabot, Inc.			
Address	Charleston, W. Va.	10 3/4	35.75	73 Same
Farm	The Putnam Company	8 5/8	25.55	796 "
Location		7	24	1938 "
Well No.	40-ser. 1195 Elev. 600.74 714'	5 3/16	17	4723 "
District	Union Putnam County	5 3/16	20	17'7 "
Surface				
Mineral		10 3/4	1/2 collar casing shoe	
Commenced	Jan. 3, 1946	8 5/8	"	"
Completed	June 3, 1946		7 x 8 5/8 Spang B.H. Pkr.	
Date shot	June 6, 1946 30 qts. 4824 to 4835	5 1/2	x 6 5/8 Lead Spang	
	B.S. 52 MCF 1 hrs. A.S. 657		B.H. Packer #21015	
Open flow	1 hr. A.S. 48/10ths W in 3"	5 1/2	x 6 5/8 Lead Spang	
Volume	657 MCF		B.H. Packer #20371	
Rock Pressure	1830 lbs. in 43 hrs.			
Fresh Water	150 1/2 blr. per hr.; 815 1 1/2 blrs. one hr.			
	1530 H.F.			Not tubed

Soil	0	6	- Sand	2360	2380 <i>Berea</i>
Blue Rock	6	26	Broken Lime	2380	2420
Red Rock	26	45	Slate & Shells	2420	2560
White Slate	45	55	Brown Shale	2560	2600
Red Rock	55	85	Lime, Black	2600	2771
White Slate	85	109	Slate & Shells	2771	3520
Red Rock	109	135	Brown Shale	3520	3665
Slate & Shells	135	165	Shells & Slate	3665	3680
Red Rock	165	205	Gritty Lime	3680	3780
White Slate	205	260	Slate & Shells	3780	3815
Lime Shell	260	265	Brown Shale	3815	4095
Red Rock	265	295	White Shale	4095	4243
Slate, blue	295	375	White Slate	4243	4290
Red Rock	375	415	Lime, White	4290	4300
White Slate	415	455	Shale, White	4300	4440
Lime Shell	455	480	Brown Shale	4440	4670
Red Rock	480	510	Black Shale	4670	4719
White Slate	510	625	Corniferous Lime	4719	4824
Red Rock	625	640	Oriskany Sand	4824	4835
Gritty Lime	640	670	Gritty Lime	4835	4844
White Slate	670	675	Sand	4844	4868
Red Rock	675	689	Gritty Lime	4868	4876
Slate & Shells	689	710	TOTAL DEPTH	4876	
Black Slate	710	720			
White Slate	720	770	SLM 1958; 4741; 4825; 4827; 4876		
Gritty Lime	770	800			
Sand, White	800	835	Gas 3310 smell		
White, Slate	835	860	Gas 3965-80 show		
Lime	860	920	Gas 4000-10 show		
Slate, White	920	990	Oil 4773 show		
Sand	990	1039	Gas 4815 show		
Black Slate	1039	1070	Gas 4825-27 103 MCF		
Sand	1070	1090			
Black Slate	1090	1130	PRODUCING SAND RECORD		
Sand, White	1130	1190			
Slate, Black	1190	1300	Oriskany Sand Pay 4825 to 4827 Init Prod		
Sand	1300	1330	103 MCF		
Black Slate	1330	1450			
Sand	1450	1710			
Big Lime	1710	1845			
White Slate	1845	1883			
Injun Sand	1883	1925			
Black Slate	1925	1928			
Sand	1928	1932			
Slate, Black	1932	1940			
Lime	1940	1960	SLM 1958		
Slate & Shells	1960	2050			
Gritty Lime	2050	2100			
Slate & Shells	2100	2300			
Black Slate	2300	2340			
Brown Slate	2340	2360			