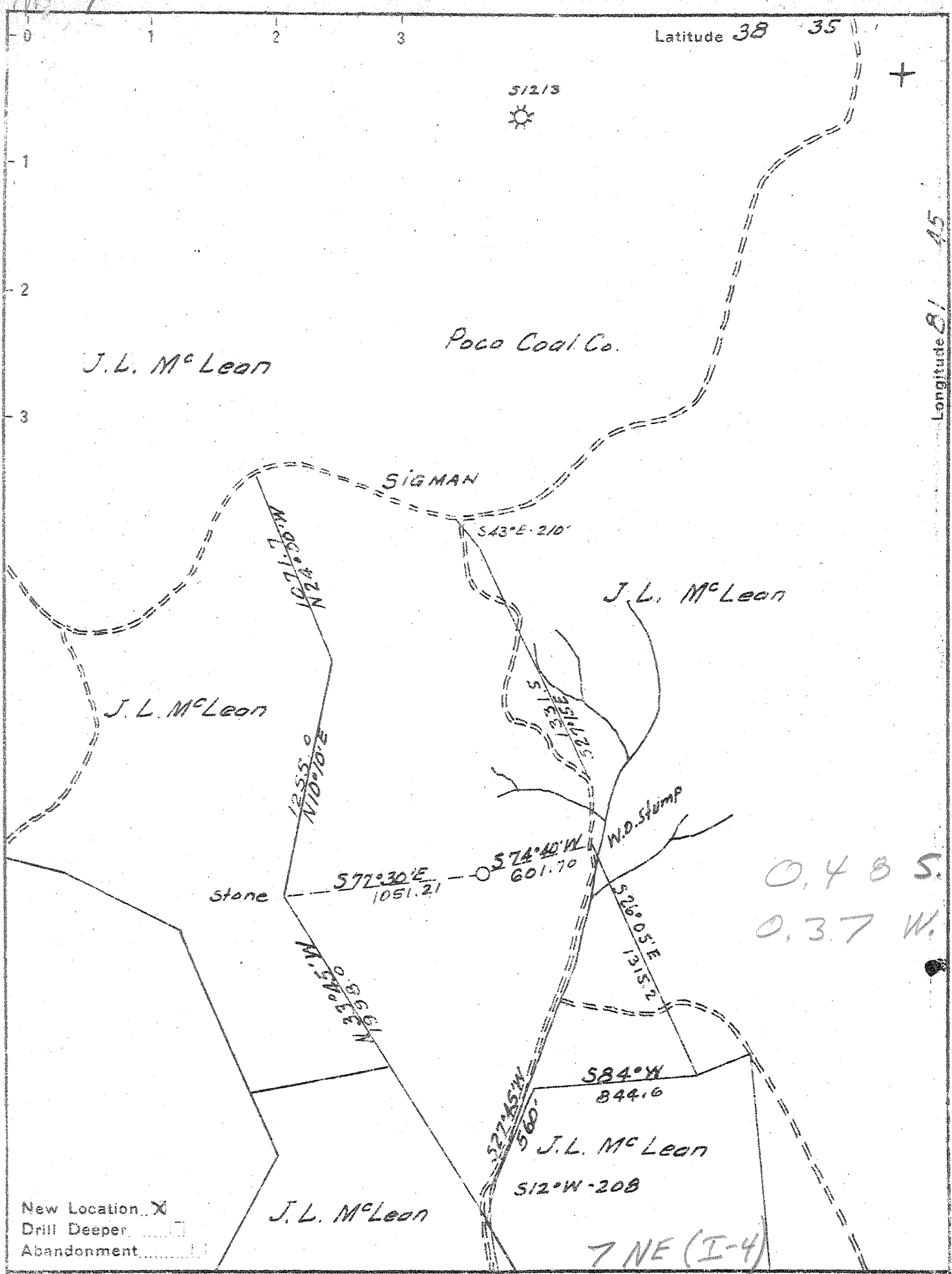


P



Company Godfrey L. Cabot Inc.

Address 900 Union Bldg. Charleston W. Va.

Farm Poca Coal Land Co.

Tract _____ Acres 9700 Lease No. 3-466

Well (Farm) No. 16 Serial No. 1246

Elevation (Spirit Level) 963.01

Quadrangle Winfield - SE

County Putnam District Pecatahica

Engineer Roy Beaton

Engineer's Registration No. _____

File No. _____ Drawing No. _____

Date 4-17-47 Scale 1" = 660'

STATE OF WEST VIRGINIA
DEPARTMENT OF MINES
OIL AND GAS DIVISION
CHARLESTON

WELL LOCATION MAP
FILE NO. PUT-367

+ Denotes location of well on United States Topographic Maps, scale 1 to 62,500, latitude and longitude lines being represented by border lines as shown.

- Denotes one inch spaces on border line of original tracing.

6-6-112

Deep Well

Big Lime 1950 - 2115

Big Injun 2115 - 2140

Sand (Berea ??) 2200 - 2215

Coniferous 4939 - 5050

Oriskany 5050 - 5072

Lime 5072 - 5074 (TD SLM)

Vol. 298 McF B.S.

3,217 McF 30 mins A.S.

Gas 5055 - 5070'

Completed Nov. 25, 1947

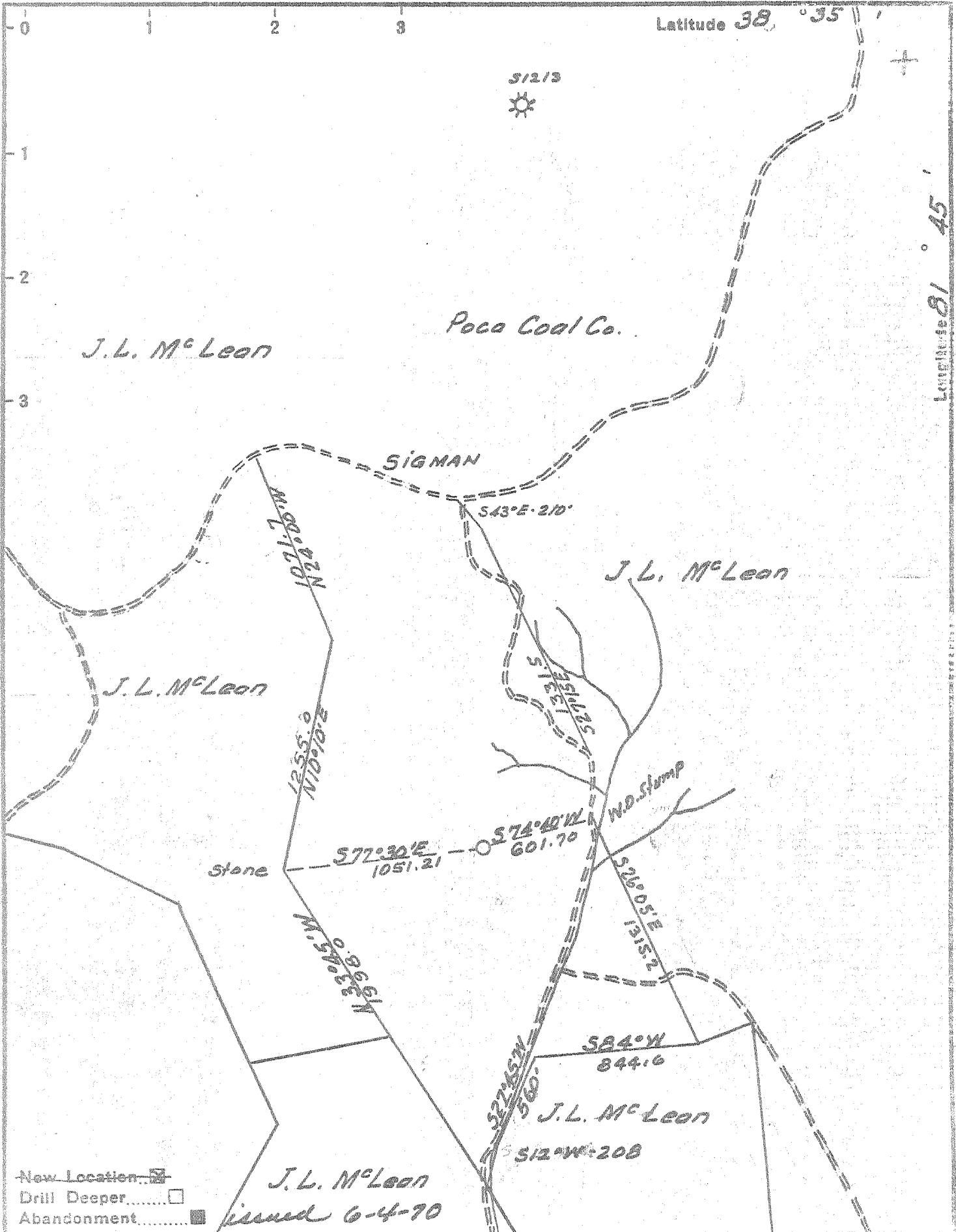


PROPERTY OF THE
 STATE OF OHIO
 DEPARTMENT OF
 MINES AND
 GEOLOGY

WEST VIRGINIA
 STATE UNIVERSITY

Geological Survey of West Virginia
 Department of Mines and Geology
 Charleston, West Virginia

Geological Survey of West Virginia
 Department of Mines and Geology
 Charleston, West Virginia



New Location
 Drill Deeper
 Abandonment

J. L. McLean
 issued 6-4-70

COMP. CABOT CORP.
 Company Englehart & Cabot Inc.
 Address 300 Union Bldg. Charleston W. Va.
 Farm Poco Coal Land Co.
 Tract _____ Acres 9700 Lease No. 3-466
 Well (Farm) No. 16 Serial No. 1246
 Elevation (Spirit Level) 963.01
 Quadrangle Winfield SE
 County Putnam District Pocotalico
 Engineer Roy Beaton
 Engineer's Registration No. _____
 File No. _____ Drawing No. _____
 Date 4-17-47 Scale 1" = 660'

STATE OF WEST VIRGINIA
 DEPARTMENT OF MINES
 OIL AND GAS DIVISION
 CHARLESTON

WELL LOCATION MAP
 FILE NO. PUT-367-P

+ Denotes location of well on United States Topographic Maps, scale 1 to 62,500, latitude and longitude lines being represented by border lines as shown.

- Denotes one inch spaces on border line of original tracing.

"IMPERIAL" TRACING CLOTH
 K & E CO., N. Y.

Pocatalico District, Putnam County, W. Va.
 By Godfrey L. Cabot, Inc., Charleston, W. Va.
 Drilled under permit Put-367; Winfield Quadrangle.
 On.....acres.
 Elevation, 963.01' L.
 Drilling commenced May 28, 1947; completed Nov. 25, 1947.
 Volume, 3,217,000 cu. ft. when shut in.
 Rock pressure, 1690 lbs. in 49 hrs., Oriskany.
 Shot Nov. 26, 1947, at 5052-5072', with 40 qts.; 207 M. cu. ft. before shot; 30 min. after shot, 3,217 M.
 Water, 1170', 2 blrs. per hour; 1282', hole full.
 Tubed under pressure June 24, 1948. Perf. top, 5048'; bot., 5072'.
 13" 48# casing, 409' (half coupling casing shoe); 10" 32.75#, 1000' 10" x 12" casing shoe); 8" 24#, 1906' (8" x 10" x 16" gas anchor packer #20338); 7" 23#, 2261' (7" x 8" x 16" rubber bottom hole packer); 5 1/8" 17#, 4973' (5 1/8" x 7" x 15" lead Spang bottom hole packer); 2" tubing, 5072'.
 Gas show, 1885-1889'; gas show, 1906'; gas show, 3888'; gas show, 4209'; gas, 4483', 24 M. cu. ft.; gas, 5055-5058', 249 M. cu. ft.; gas, 5062', 298 M. cu. ft.
 Producing sand record: Oriskany, 5055-5070', 298 M. cu. ft.
 Gas well. Record from Smith April 26, 1949.

	Top.	Bottom.
Red rock	0	80
Slate	80	120
Sand	120	160
Red rock	160	200
Slate and shell	200	387
Sand	387	409
Slate	409	435
Sand	435	455
Slate	455	503
Red rock	503	635
Sand	635	651
Red rock	651	720
Slate	720	735
Red rock	735	775
Slate and shells	775	842
Red rock	842	898
Slate and shell	898	914
Red rock	914	928
Slate and shell	928	945
Dunkard Sand	945	1005
Slate and shell	1005	1059
Sand	1059	1079
Slate and shell	1079	1125
Sand	1125	1185
Slate and shell	1185	1205
Sand	1205	1295
Slate and shell	1295	1332
Sand	1332	1393
Slate and shell	1393	1406
Sand	1406	1425
Slate and shell	1425	1485
Sand	1485	1495
Slate and shell	1495	1583

POCA COAL LAND CO. NO. 16 (1246) WELL (Continued).

	Top.	Bottom.
Lime	1583	- 1702
Sand	1702	- 1865
Slate	1865	- 1867
Sand	1867	- 1912
Lime	1912	- 1950
• Big Lime	1950	- 2115
• Big Injun Sand	2115	- 2140
• Weir shells	2140	- 2200
Sand	2200	- 2215
Slate and shells (SLM, 2278')	2215	- 2650
Brown shale	2650	- 2715
Slate and shells	2715	- 3815
Shale	3815	- 4000
Slate	4000	- 4060
Shale	4060	- 4378
Slate	4378	- 4477
Shale	4477	- 4540
Slate	4540	- 4760
Shale	4760	- 4938
• Corniferous Lime (SLM, 4973')	4938	- 5050
• Oriskany Sand (SLM, 5053')	5050	- 5072
Lime	5072	- 5074
Total depth (SLM)		5074

4973	5050
963	963
<hr/> 4010	<hr/> 4087