

0 1 2 3 Latitude 38° 35'

Longitude 81° 45'

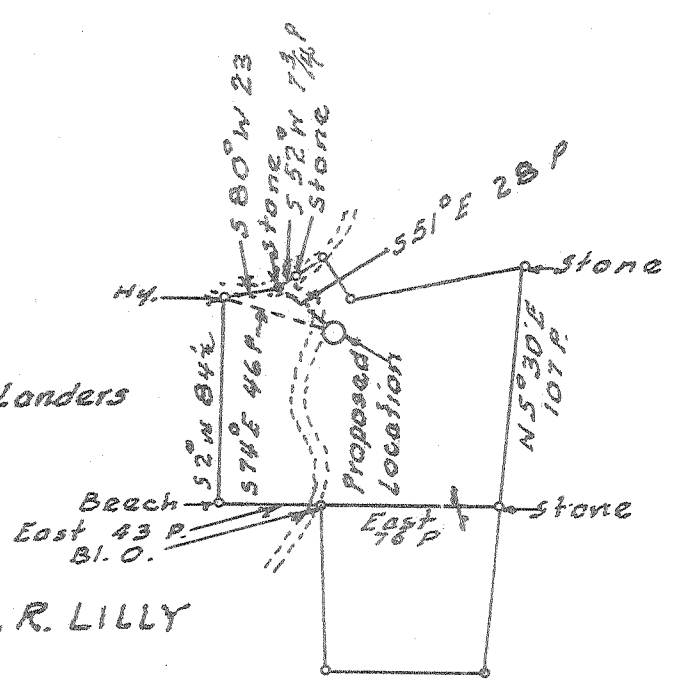
J. L. McLEAN HRS.

Samuel Londers

L. R. LILLY

G. W. BAILEY

PUTNAM COMPANY



1.415
0.90

New Location...
 Drill Deeper.....
 Abandonment.....

10-11-66

7 NE (I-4)

Company Godfrey L. Cabot, Inc.
 Address 900 Union Bldg. Charleston, W. Va.
 Farm J. L. McLean Hrs.
 Tract _____ Acres _____ Lease No. 3-463
 Well (Farm) No. 38 Serial No. 1260
 Elevation (Spirit Level) 902'
 Quadrangle Winfield-SE
 County Putnam District Pocatalico
 Engineer Logan McDonald
 Engineer's Registration No. 610
 File No. _____ Drawing No. _____
 Date 4-23-48 Scale 1" = 1320'

STATE OF WEST VIRGINIA
 DEPARTMENT OF MINES
 OIL AND GAS DIVISION
 CHARLESTON

WELL LOCATION MAP
 FILE NO. Put-390

+ Denotes location of well on United States Topographic Maps, scale 1 to 62,500, latitude and longitude lines being represented by border lines as shown.

- Denotes one inch spaces on border line of original tracing.

60 192

~~DEEP~~ DEEP WELL

WEST VIRGINIA DEPARTMENT OF MINES
OIL & GAS DIVISION
W E L L R E C O R D

Permit No. Put 390		Gas Well	
Winfield Quad.		CASING & TUBING	
Company	Godfrey L. Cabot, Inc.		
Address	Charleston, W.Va.	13	384 384 shoe
Farm	J.L. McLean Heirs Acres	10 32.75	892 892 "
Location		8 24	1862 0
Well No.	38 serial 1260 Elev. 902'	7 23	2181 0
District	Pocataligo Putnam County	5½	4913 4913 *
Commenced	May 24, 1948	B.H. Packer	
Completed	Sept. 6, 1948		
Water	1035' 1 blr. per hr.; Between 2054 and 2074 H.F.		
Open flow	When shut in Volume 3,095 MCF		
Rock Pressure	1630 lbs. in 18½ hrs. Oriskany		
Date shot	Sept. 9, 1948 Depth 4991 to 5006 30 qts. B.S. 278 MCF; 55 min. A.S. 3,095		

			PRODUCING SAND RECORD
Red Rock	0	20	
Sand	20	49	
Slate	49	60	Oriskany 4991 to 5006 1,500 MCF
Red Rock	60	116	initial production
Slate	116	150	
Red Rock	150	158	
Slate	158	207	Gas 1941 73 MCF (salt Water in) gas pay
Red Rock	207	250	Gas 1948-1954: 127 MCF
Slate	250	320	Gas 4116-4136 ; show only
Sand	320	350	Gas 4991-4994; 1,500 MCF
Slate	350	379	
Sand	379	389	
Slate	389	452	
Red Rock	452	482	
Slate	482	560	
Red Rock	560	635	
Slate	635	650	
Sand	650	692	
Slate	692	735	
Red Rock	735	800	
Sand	800	835	
Red Rock	835	852	
Slate	852	875	
Sand	875	925	
Slate & Shell	925	996	
Sand	996	1087	
Slate & Shell	1087	1099	
Sand	1099	1185	
Slate & Shell	1185	1433	
Sand	1433	1517	
Slate & Shell	1517	1574	
Salt Sand	1574	1634	
Slate	1634	1640	
Salt Sand	1640	1818	
Little Lime	1818	1847	
Big Lime	1847	2041	
Injun	2041	2100	
Slate & Shell	2100	2131	
Lime Shell	2131	2295	
Slate & Shell	2295	2495	
Brown Shale	2495	2505	
Berea Grit	2505	2520	
Slate & Shell	2520	3722	
Brown Shale	3722	3791	
Slate & Shell	3791	3980	
Brown Shale	3980	4240	
Slate & Shell	4240	4628	
Brown Shale	4628	4895	
Corniferous	4895	4991	
Oriskany	4991	5005	
Lime	5005	5010	T.D.