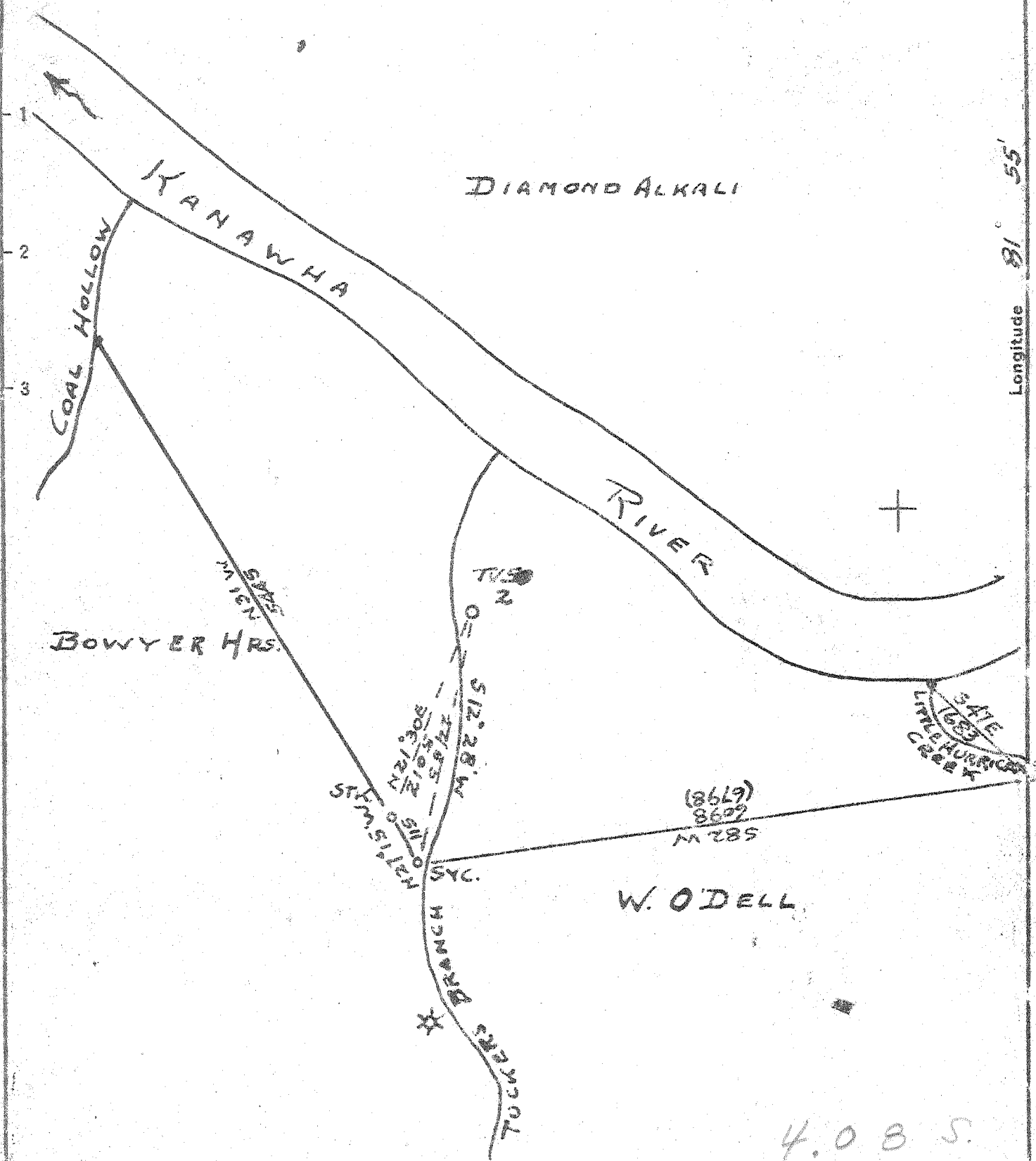


Latitude 30° 35'

Longitude 81° 55'



W. O'DELL

4.08 S.
0.95 W.

9 SE (I-4)

New Location
 Drill Deeper
 Abandonment

Company TEAVEE OIL & GAS INC.
 Address CHARLESTON, W. VA
 Farm BOWYER HRS.
 Tract G.S.C. Acres 550 Lease No. _____
 Well (Farm) No. 2 Serial No. 50
 Elevation (Spirit Level) 627.07
 Quadrangle WINFIELD - SW
 County PUTNAM District SCOTT
 Engineer JOHN GALPIN
 Engineer's Registration No. 875
 File No. _____ Drawing No. _____
 Date 1-15-51 Scale 1" = 1320'

STATE OF WEST VIRGINIA
 DEPARTMENT OF MINES
 OIL AND GAS DIVISION
 CHARLESTON

WELL LOCATION MAP
 FILE NO. PUT-463

+ Denotes location of well on United States Topographic Maps, scale 1 to 62,500, latitude and longitude lines being represented by border lines as shown.
 - Denotes one inch spaces on border line of original tracing.

Deep Well ✓

WEST VIRGINIA DEPARTMENT OF MINES
OIL & GAS DIVISION
W E L L R E C O R D

Permit No. Put 463
Winfield Quad.

Gas Well
CASING & TUBING

Company **Travee Oil and Gas, Inc.**
Address **Charleston, W. Va.**
Farm **Bowyer Hrs. Acres 550**
Location **Tuckers Branch- Kanawha River**
Well No. **2** Elev. **627.07**
District **Scott Putnam County**
Surface **Bowyer Hrs., c/o J.W. Anderson**
Winfield, W. Va.

	16	20'3	20'3
	13	105	Pld.
	10	942	Pld.
	8 1/2	1539	Pld.
	6 5/8	2252	2252

Mineral
Commenced
Completed
Date shot

Same
Jan. 15, 1951
April 22, 1951
4-23-51 Depth 3424 to 4336

Bottom Hole Packer
Size 7 x 8 5/8
Depth 2252'

Open flow
Volume
Salt Water

with 10,000# E.L. 407-A
3/10ths W in 1" B.S. - 18 MCF
80/10ths W in 2" 2 hr. A.S. ~~449,000 cu ft.~~ ^{237 mcf}
750' H.F.; 1370'

Red Rock		0	50
Sand		50	75
Mud	Blue	75	110
Red Rock		110	132
Mud	Blue	132	145
Red Rock		145	175
Sand		175	200
Mud	Blue	200	300
Red Rock		300	375
Sand		375	425
Red Rock		425	525
Sand		525	625
Lime		625	660
Sand		660	700
Slate		700	725
Sand		725	825
Lime		825	930
Sand		930	1175
Slate		1175	1350
Salt Sand		1350	1516
Little Lime		1516	1532
Big Lime		1532	1717
Slate		1717	1751
Injun Sand		1751	1820
Slate & Shells		1820	2204
Coffee Slate		2204	2226
Berea Sand		2226	2255
Slate & Shells		2255	3424
Shale	Brown	3424	3820
Slate	White	3820	4130
Shale	Brown	4130	4336
Corniferous Lime			4336
T.D.			4336

4336
627

3709

Gas pay 3250-3270 Not enough to gauge
Gas Pay 4290-4295 3/10 W 1"