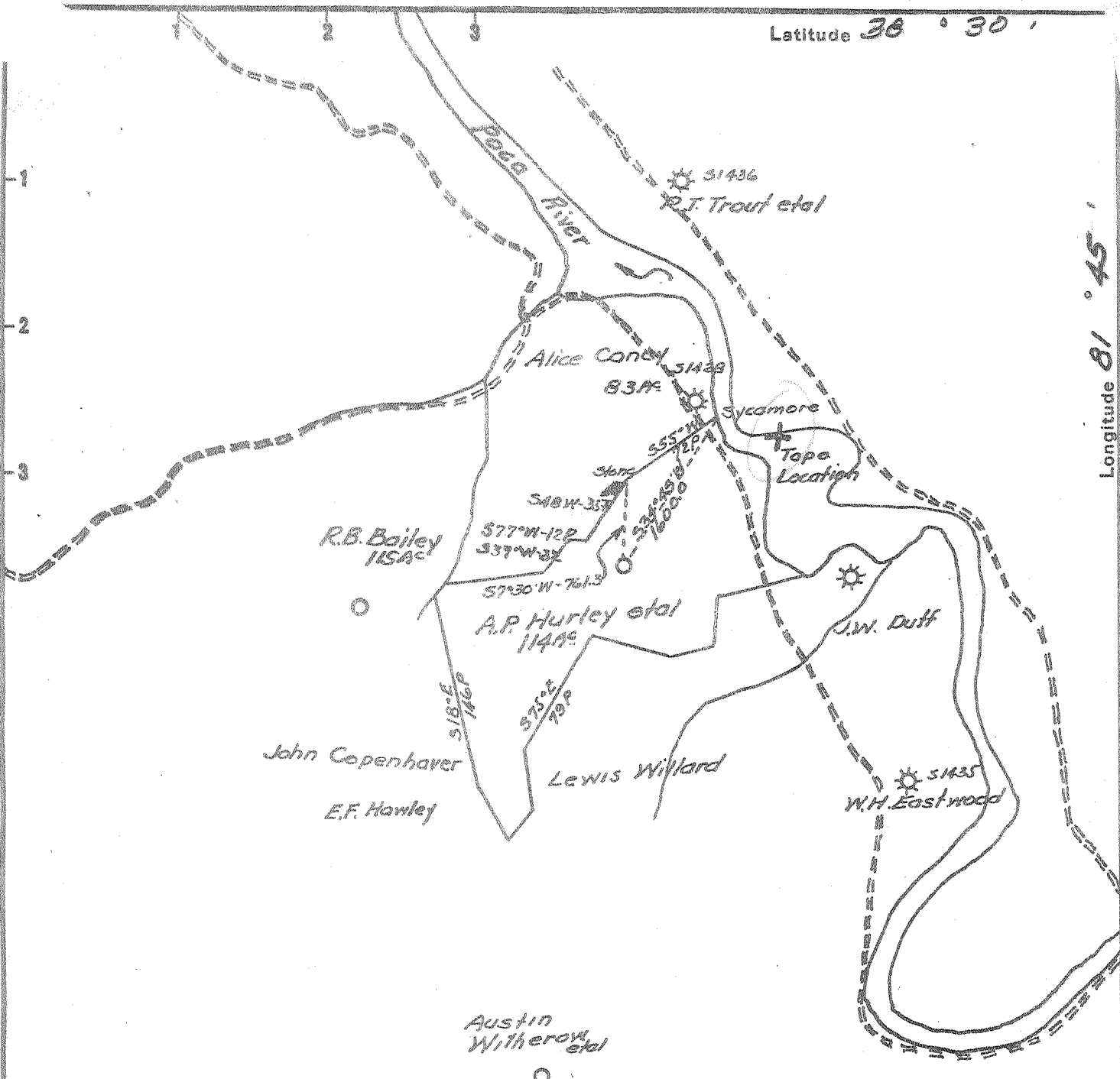


Latitude 36° 30'

Longitude 81° 45'



2.89 S  
2.30 W

New Location   
 Drill Deeper   
 Abandonment

IC (J-4)

Company Godfrey L. Cabot Inc  
 Address Box 1473 Charleston W.Va  
 Farm A.P. Hurley et al (Unit W 75)  
 Tract \_\_\_\_\_ Acres 114 Lease No. 3-1007  
 Well (Farm) No. 1 Serial No. 1445  
 Elevation (Spirit Level) 908.8  
 Quadrangle St. Albans - NE  
 County Putnam District Pocatalico  
 Engineer H.L. Simmons Jr  
 Engineer's Registration No. 1652  
 File No. \_\_\_\_\_ Drawing No. \_\_\_\_\_  
 Date 9-26-55 Scale 1" = 1320'

STATE OF WEST VIRGINIA  
 DEPARTMENT OF MINES  
 OIL AND GAS DIVISION  
 CHARLESTON

WELL LOCATION MAP  
 FILE NO. Put-587

+ Denotes location of well on United States Topographic Maps, scale 1 to 62,500, latitude and longitude lines being represented by border lines as shown.

- Denotes one inch spaces on border line of original tracing.

6-0 112

Deep Well

St. Albans  
Put-587

GODFREY L. CABOT, INC.  
WELL RECORD 12

SERIAL NO. 1145 OPERATING DISTRICT PN  
FARM A. P. Hurley No. 1 LEASE NO.  
COUNTY Putnam TAX DISTRICT Pocatalico STATE W. Va.  
DRILLING COMMENCED 10-13-55 DRILLING COMPLETED 1-31-56  
CONTRACTOR Company tools ADDRESS

Map Square  
Lot No. 39-29  
Warrant No.

ROCK PRESSURE RECORD				PRODUCING SAND RECORD			
DRY HOLE				DRY HOLE			
Shale	Sand	1145	lbs. in 21 hrs.	Sand, from	to	Init. Prod.	M. C. F. Gas
	Sand		lbs. in hrs.	Sand, from	to	Init. Prod.	M. C. F. Gas
	Sand		lbs. in hrs.	Sand, from	to	Init. Prod.	M. C. F. Gas

OPEN FLOW  
Time, Condition: DRY HOLE  
Water  
10ths Mercury in inch opening  
Volume M. C. F.  
24 HOUR PRODUCTION TEST  
AFTER TUBING  
M. C. F. Line Pressure  
Bbls. Oil in 24 Hours  
CUBED AND SHUT IN Date  
Packer, Size Kind  
Depth, Depth Size Anchor  
Perf. Top Bottom  
Perf. Top Bottom

CASING RECORD

SIZE	WEIGHT	USED IN DRILLING	LEFT IN WELL	HOW CASING SET
13"		421		
10"		1759		
8"		2017		
7"		4749	3979	

ELEVATION: 909  
Shot with 500# gel. from 3943 to 3996 Date 3-13-56  
Gauge Before { Acid Shot 47 Mcf Gauge 50 Min. After { Acid Shot 33 Mcf

FORMATION	COLOR	TOP	BOTTOM	STEEL LINE MEASUREMENTS	HARD OR SOFT	OIL, GAS OR WATER	DEPTH FOUND	REMARKS
Soil		0	8					NOTE: 7" parted at 3959. Top of casing left at 3979. String of tools inside 7" casing. Drilled by with 6" tools to 3996.
Sand		8	20					
Red Rock		20	46					
Slate		46	88					
Sand		88	98					
Red Rock		98	114					
Slate		114	135					
Lime		135	154					
Red Rock		154	165					
Lime		165	192					
Red Rock		192	385					
Slate		385	440					
Red Rock		440	475					
Slate		475	600					
Sand		600	625					
Slate		625	628					
Sand		628	653			Water	645	1/4 blr. per hr.
Slate & Shell		653	762					
Sand		762	795					
Slate & Shell		795	820					
Lime, Sandy		820	840					
Slate & Shell		840	875					
Sand		875	905					
Slate & Shell		905	1050					
Sand		1050	1090					
Slate & Shell		1090	1185					
Lime		1185	1230					
Sand		1230	1260					
Lime		1260	1290					
Slate & Shell		1290	1300					
Lime		1300	1325					
Sand		1325	1704			Water	1355	Hole full.
Little Lime		1704	1748					
BIG LIME		1748	1900	1759		Gas	1795	60 Mcf.
CEMENTUM		1900	1964			Water	1935	Also show of oil. Water filled 100'.



FORMATION	COLOR	TOP	BOTTOM	STEEL LINE MEASUREMENTS	HARD OR SOFT	OIL, GAS OR WATER	DEPTH FOUND	REMARKS
lime		1964	2080					
late & Shell		2080	2335					
lime		2335	2400					
late & Shell		2400	3610					
BROWN SHALE		3610	3715					
late & Shell		3715	3885					
Brown Shale		3885	4110			Gas		
late		4110	4530					
Brown Shale		4530	4733					
ORNITHOMOUS		4733	4825	1749				
TRISKANY		4825	4857					
lime		4857						
TOTAL DEPTH			4877					

4733  
 909  
 3824

Gas 3963-68; 298 Mcf; blew down to 47 Mcf.

DATE

APPROVED