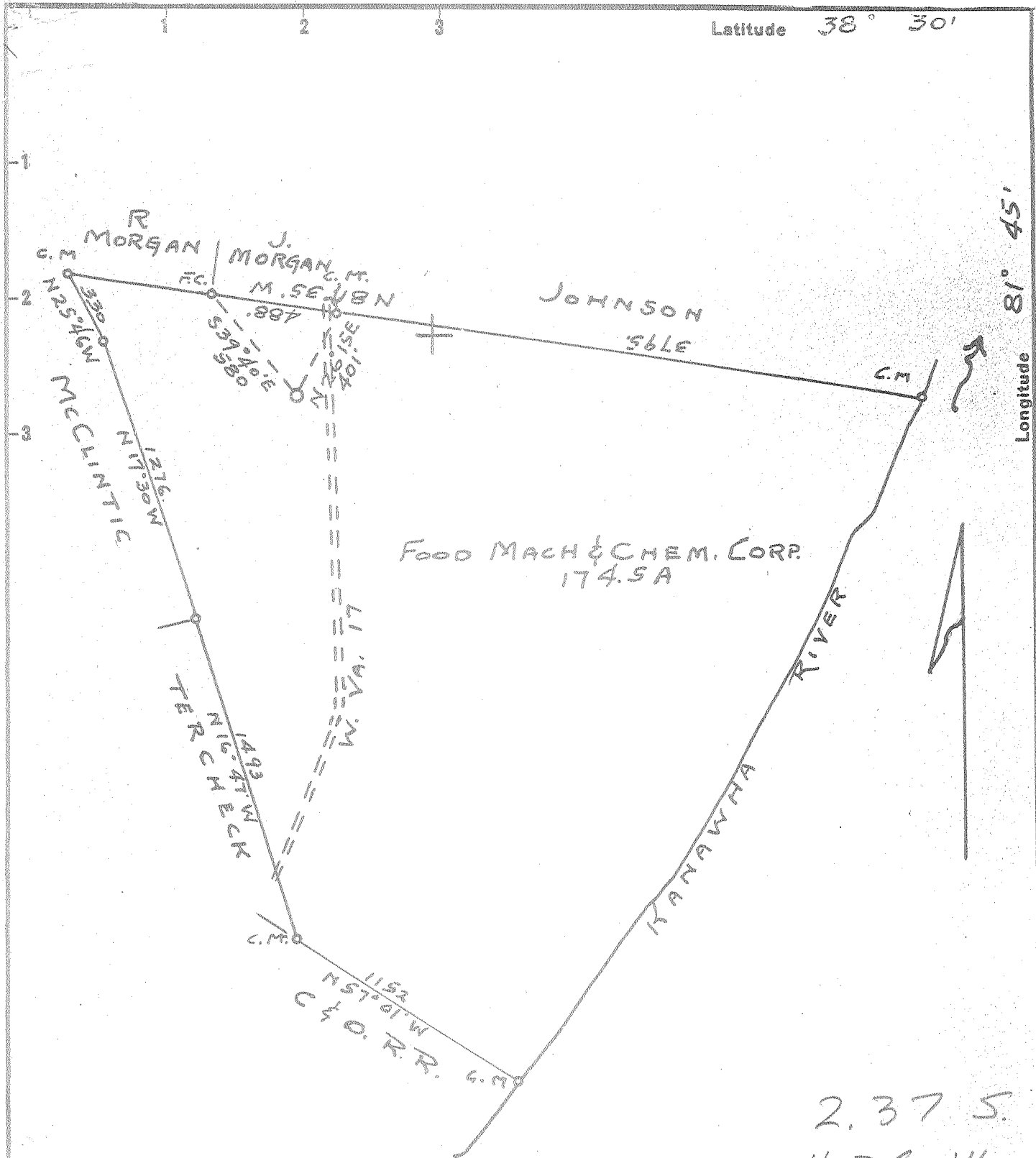


P



Latitude 38° 30'

Longitude 81° 45'

2.37 S.
4.36 W.

1 WC (J-4)

- New Location...
- Drill Deeper.....
- Abandonment.....

Company OHIO APEX DIV. FOOD MACH. & CHEM. CORP.
 Address NITRO, W. VA.
 Farm FOOD MACH. & CHEM. CORP.
 Tract _____ Acres 174.5 Lease No. _____
 Well (Farm) No. 1 Serial No. _____
 Elevation (Spirit Level) 617.03'
 Quadrangle ST. ALBANS - NE
 County PUTNAM District SCOTT
 Engineer JOHN GALPIN
 Engineer's Registration No. 875
 File No. _____ Drawing No. _____
 Date 12-14-55 Scale 1" = 600'

STATE OF WEST VIRGINIA
 DEPARTMENT OF MINES
 OIL AND GAS DIVISION
 CHARLESTON

WELL LOCATION MAP
 FILE NO. Put-593

+ Denotes location of well on United States Topographic Maps, scale 1 to 62,500, latitude and longitude lines being represented by border lines as shown.

- Denotes one inch spaces on border line of original tracing.

6-6-55 ✓ Deep Well



STATE OF WEST VIRGINIA
DEPARTMENT OF MINES
OIL AND GAS DIVISION 3

Quadrangle St. Alb.

WELL RECORD

Permit No. Put-593

Oil or Gas Well Gas
(KIND)

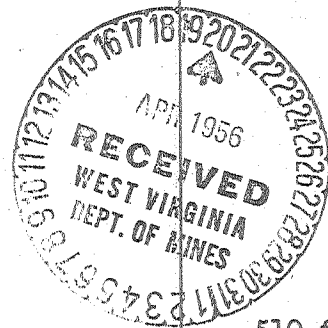
Company Ohio-Apex Div., Food Mach. & Chem. Corp.
Address Nitro, West Virginia
Farm Food Mach. & Chem. Corp. Acres 174.5
Location (waters) Kanawha River
Well No. 1 Elev. 617.03
District Scott County Putnam
The surface of tract is owned in fee by Food Mach. & Chem. Corp.
Address Nitro, W. Va.
Mineral rights are owned by Same
Address Same
Drilling commenced 12-27-55
Drilling completed 3-30-56
Date Shot 4/4/56 From 4503 To 3600
With 9350 lbs TX and 80% Gel
Open Flow 12/10ths Water in 2 Inch
/10ths Merc. in Inch
Volume 146,000 Cu. Ft.
Rock Pressure Not Taken lbs. hrs.
Oil bbls., 1st 24 hrs.
Fresh water 50 feet feet
Salt water 510 feet 1080 feet

Casing and Tubing	Used in Drilling	Left in Well	Packers
Size			Kind of Packer
16			
18	63'	63'	
10	603'	Pulled	Size of
8 1/4	1444'	Pulled	
6 1/2	1729'	1729'	Depth set
5 3/16			
3			Perf. top
2			Perf. bottom
Liners Used			Perf. top
			Perf. bottom

CASING CEMENTED _____ SIZE _____ No. Ft. _____ Date _____

COAL WAS ENCOUNTERED AT _____ FEET _____ INCHES
_____ FEET _____ INCHES _____ FEET _____ INCHES
_____ FEET _____ INCHES _____ FEET _____ INCHES

Formation	Color	Hard or Soft	Top	Bottom	Oil, Gas or Water	Depth Found	Remarks
Surface			0	5			
Rock	Red		5	50	Water	50 ft.	1. b. per hr.
Sandstone	Blue		50	55			
Rock	Red		55	66			
Stone	Blue		66	70			
Sand			70	105			
Rock	Red		105	110			
Sand			110	115			
Slate			115	160			
Rock	Red		160	170			
Slate			170	211			
Sand			211	228			
Slate			228	246			
Sand			246	280			
Slate			280	450			
Sand			450	598		510 ft.	H. F.
Slate			598	639			
Sand			639	653			
Lime Shells			653	671			
Sand			671	706			
Slate			706	823			
Sand			823	848			
Slate			848	944			
Salt Sand			944	1375		1080 ft.	H.F.
Slate			1375	1421			
Little Lime			1421	1440			
Big Lime			1440	1613		1568 ft	H. F.
Injun Sand			1613	1686			
Slate & Shells			1686	1822	Water	1666ft.	1/2 B. per hr.
Lime			1822	1892			
Slate & Shells			1892	2085			
Shale	Brown		2085	2109			
Berea Sand			2109	2130			
Slate & Shells			2130	3080		2890 ft	Gas
Shale	Lt. Br.		3080	3095			
Slate & Shells			3095	3304			
Shale	Br.		3304	3346			
Britty Lime			3346	3455		3637 ft	gas 3/10 w. 1"
Slate & Shells			3455	3575			



(Over)

Formation	Color	Hard or Soft	Top <i>3</i>	Bottom	Oil, Gas or Water	Depth Found	Remarks
Shale	Brown		3575	3780			
Slate			3780	4175			
Shale	Brown		4175	4400	4487		
Lime			4400	4487	617		
Sandy Lime			4487	4491	870		
Lime			4491	4503			
Total Depth				4503			

Date 4/30

APPROVED

By

[Signature]