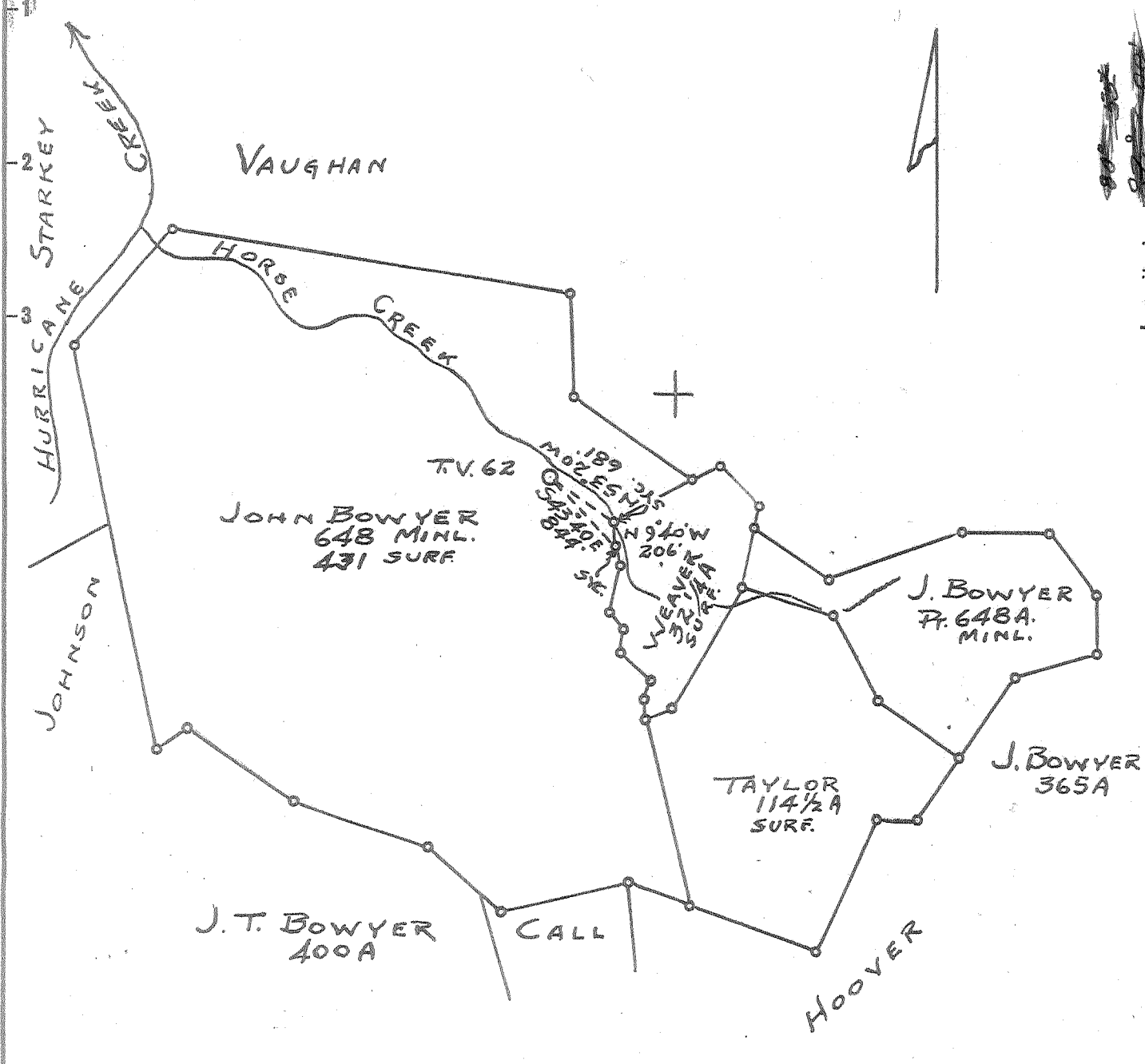


Latitude 38° 35'

Longitude 81° 55' - 0.K.



3.52 S.  
3.13 W.

- New Location,
- Drill Deeper.....
- Abandonment.....

9 WC (I-4)

Company TEAVEE OIL & GAS INC.  
 Address CHARLESTON, W. VA  
 Farm JOHN BOWYER HRS.  
 Tract \_\_\_\_\_ Acres 648 Lease No. \_\_\_\_\_  
 Well (Farm) No. 4 Serial No. TV 62  
 Elevation (Spirit Level) 638 D.F. \_\_\_\_\_  
 Quadrangle WINEFIELD - SW  
 County PUTNAM District TEAYS VALLEY  
 Engineer JOHN GALPIN  
 Engineer's Registration No. 875  
 File No. \_\_\_\_\_ Drawing No. \_\_\_\_\_  
 Date 9-10-56 Scale 1" = 1320'

STATE OF WEST VIRGINIA  
 DEPARTMENT OF MINES  
 OIL AND GAS DIVISION  
 CHARLESTON

**WELL LOCATION MAP**  
 FILE NO. Put-627

- + Denotes location of well on United States Topographic Maps, scale 1 to 62,500, latitude and longitude lines being represented by border lines as shown.
- Denotes one inch spaces on border line of original tracing.

5-0 1/2 Deep Well ✓



STATE OF WEST VIRGINIA  
DEPARTMENT OF MINES  
OIL AND GAS DIVISION

*Winfield*

WELL RECORD

Permit No. Put 627

Oil or Gas Well Dry  
(KIND)

Company Teavee Oil & Gas, Inc.  
Address Charleston, W. Va.  
Farm John Bowyer Hrs. Acres 648  
Location (waters) Horse Creek  
Well No. 4-62 Elev. 638  
District Teays Valley County Putnam  
The surface of tract is owned in fee by John Bowyer Hrs.  
Address Winfield, W. Va.  
Mineral rights are owned by Same  
Address \_\_\_\_\_

Drilling commenced September 29, 1956  
Drilling completed February 28, 1957  
Date Shot 3/16/57 From 3400 To 4270  
With 10,000# ammonium Nitrate & 3,000# 80% Gel.  
Open Flow 2/10ths Water in 1" 48 hrs. A.S. Inch  
\_\_\_\_\_/10ths Merc. in \_\_\_\_\_ Inch  
Volume 15,000 Cu. Ft.  
Rock Pressure not taken lbs. \_\_\_\_\_ hrs.  
Oil \_\_\_\_\_ bbls., 1st 24 hrs.  
Fresh water 30 feet \_\_\_\_\_ feet  
Salt water 780; 1650 feet and 1785 feet

| Casing and Tubing | Used in Drilling | Left in Well | Packers        |
|-------------------|------------------|--------------|----------------|
| Size              |                  |              | Kind of Packer |
| 16                |                  |              |                |
| 18                | <u>42</u>        |              |                |
| 10                | <u>598</u>       |              | Size of        |
| 8 1/2             | <u>1,735</u>     |              |                |
| 6 1/2             | <u>611</u>       |              | Depth set      |
| 5 3/16            |                  |              |                |
| 3                 |                  |              | Perf. top      |
| 2                 |                  |              | Perf. bottom   |
| Liners Used       |                  |              | Perf. top      |
|                   |                  |              | Perf. bottom   |

CASING CEMENTED \_\_\_\_\_ SIZE \_\_\_\_\_ No. Ft. \_\_\_\_\_ Date \_\_\_\_\_

COAL WAS ENCOUNTERED AT \_\_\_\_\_ FEET \_\_\_\_\_ INCHES  
\_\_\_\_\_ FEET \_\_\_\_\_ INCHES \_\_\_\_\_ FEET \_\_\_\_\_ INCHES  
\_\_\_\_\_ FEET \_\_\_\_\_ INCHES \_\_\_\_\_ FEET \_\_\_\_\_ INCHES

| Formation        | Color | Hard or Soft | Top  | Bottom | Oil, Gas or Water | Depth Found | Remarks    |
|------------------|-------|--------------|------|--------|-------------------|-------------|------------|
| Mud              |       |              | 0    |        |                   |             |            |
| Sand             |       |              | 70   | 100    | Water             | 80          | Hole Full  |
| Red Rock         |       |              | 100  | 147    |                   |             |            |
| Slate & Red Rock |       |              | 147  | 218    |                   |             |            |
| Slate            |       |              | 218  | 288    |                   |             |            |
| Slate & Red Rock |       |              | 288  | 431    |                   |             |            |
| Lime             |       |              | 431  | 447    |                   |             |            |
| Slate            |       |              | 447  | 486    |                   |             |            |
| Sand             |       |              | 486  | 598    |                   |             |            |
| Slate            |       |              | 598  | 780    | Water             | 780         | Hole Full  |
| Sand             |       |              | 780  | 827    |                   |             |            |
| Slate            |       |              | 827  | 868    |                   |             |            |
| Sand             |       |              | 868  | 1145   |                   |             |            |
| Slate            |       |              | 1145 | 1190   |                   |             |            |
| Sand (salt sand) |       |              | 1190 | 1413   |                   |             |            |
| Lime (Big Lime)  |       |              | 1413 | 1594   |                   |             |            |
| Big Injun        |       |              | 1594 | 1692   |                   |             |            |
| Shell            |       |              | 1692 | 2105   | Water             | 1785        | 50 gal/hr. |
| Brown Shale      |       |              | 2105 | 2113   |                   |             |            |
| Berea            |       |              | 2113 | 2143   |                   |             |            |
| Slate & Shells   |       |              | 2143 | 3260   | Gas               | 2707        | Show       |
| Brown Shale      |       |              | 3260 | 3305   | Gas               | 2840        | Show       |
| Slate & Shell    |       |              | 3305 | 3420   | Gas               | 3272        | Show       |
| Lime Shell       |       |              | 3415 | 3420   |                   |             |            |
| Brown Shale      |       |              | 3420 | 3430   |                   |             |            |
| Slate & Shell    |       |              | 3430 | 3500   | Gas               | 3422        | Show       |
| White Slate      |       |              | 3500 | 3528   |                   |             |            |
| Shell            |       |              | 3528 | 3538   |                   |             |            |
| Brown Shale      |       |              | 3538 | 3597   |                   |             |            |
| Slate            |       |              | 3597 | 3950   | Gas               | 3960        | Show       |
| Brown Shale      |       |              | 3950 | 4120   | Gas               | 4100        | Show       |
| Corn Lime        |       |              | 4120 | 4270   |                   |             |            |
| T. D.            |       |              |      | 4270   |                   |             |            |

4120  
638  
3482

