

Janie 4/24/90

Latitude 38° 35'

38° 32' 30" 7.5

JOHN BOWYER HRS

J.T. BOWYER HRS. 95A

GRANT

BROWN (SURF)

V.C. SMITH

Partial Plug, B- 4/24/90

New Location...   
 Drill Deeper.....   
 Abandonment.....  - 5/17/90

4/24/90 Partial Plug only Still Producing from

Company	TEAVEE OIL & GAS
Address	1901 KANAWHA CANEY BLDG CHARLESTON, W.V. 25301
Farm	J. T. BOWYER HRS.
Tract	119 Acres 1450 Lease No.
Well (Farm) No.	5 Serial No. 64
Elevation (Spirit Level)	647 GR.
Quadrangle	WINFIELD 15E 7.5
County	PUTNAM District SCOTT
Engineer	JOHN GALPIN
Engineer's Registration No.	875
File No.	Drawing No.
Date	7/15/57 Scale 1" = 500'

STATE OF WEST VIRGINIA  
 DEPARTMENT OF MINES  
 OIL AND GAS DIVISION  
 CHARLESTON

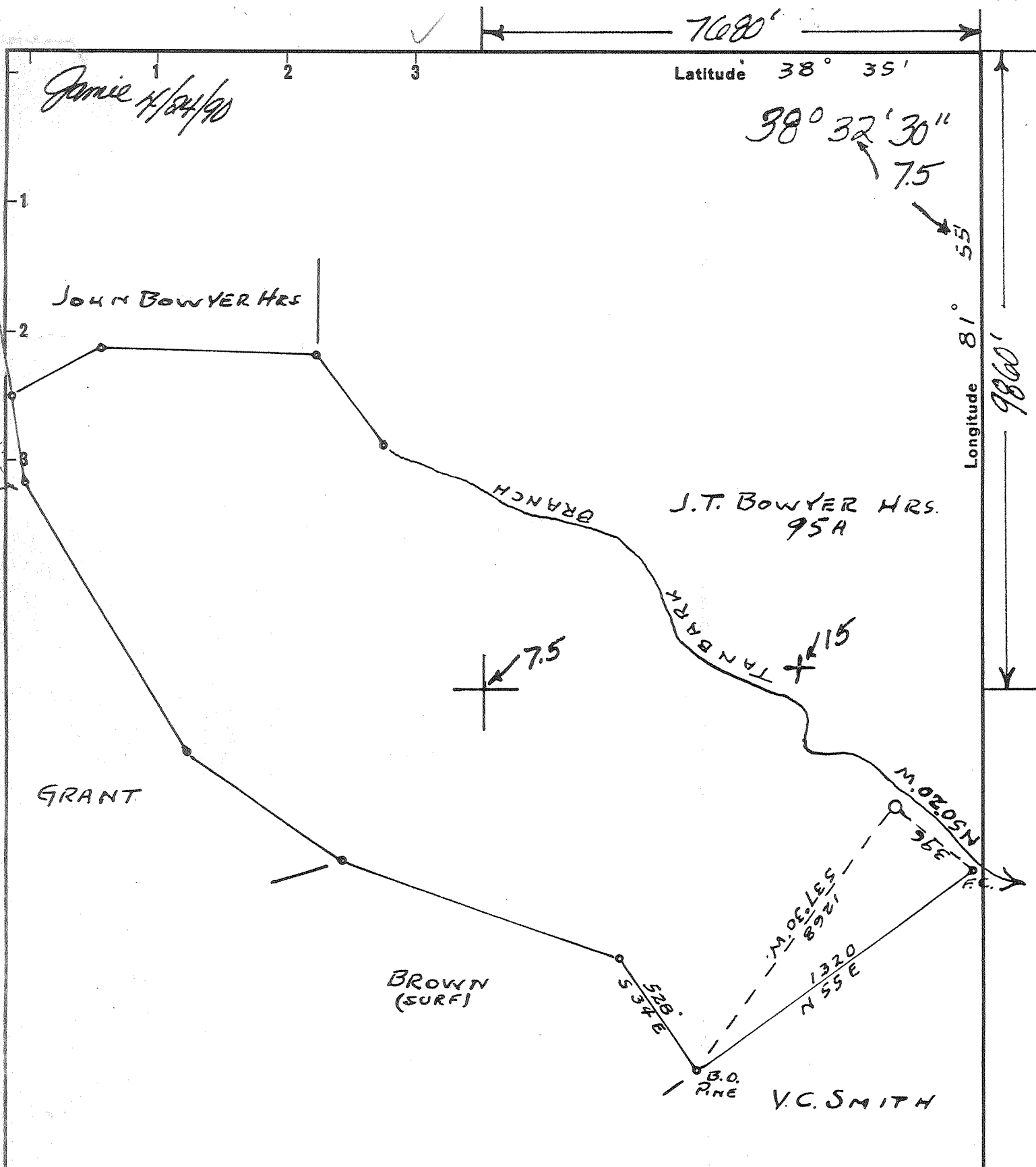
WELL LOCATION MAP  
 FILE NO. PUT-639-PR49  
 47-079

+ Denotes location of well on United States Topographic Maps, scale 1 to 62,500, latitude and longitude lines being represented by border lines as shown.

- Denotes one inch spaces on border line of original tracing.

MAY 22 1990

PUT 639-PR49



Partial Plug, B- 4/24/90

New Location...   
 Drill Deeper.....   
 Abandonment.....

4/24/90 Partial Plug only Still Producing from

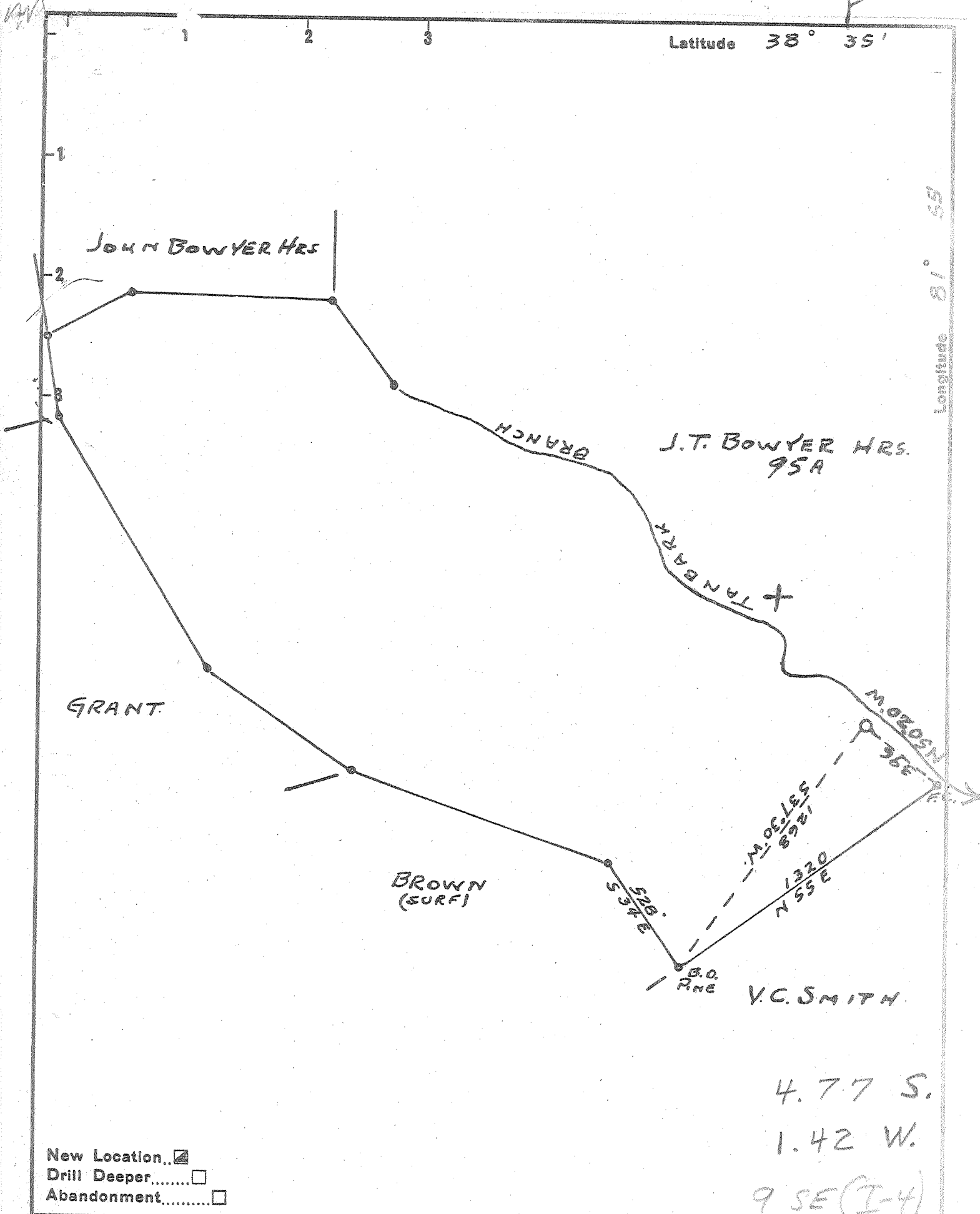
Company	TEAVEE OIL & GAS
Address	1901 KANAWHA CANEY BLVD CHARLESTON, W.V. 25301
Farm	J. T. BOWYER HRS.
Tract	119 Acres 1450 Lease No.
Well (Farm) No.	5 Serial No. 64
Elevation (Spirit Level)	647 GR.
Quadrangle	WINFIELD 15F 7.5
County	PUTNAM District SCOTT
Engineer	JOHN GALPIN
Engineer's Registration No.	875
File No.	Drawing No.
Date	7/15/57 Scale 1" = 500'

STATE OF WEST VIRGINIA  
 DEPARTMENT OF MINES  
 OIL AND GAS DIVISION  
 CHARLESTON

WELL LOCATION MAP  
 FILE NO. PUT-639-PP  
 47-079

+ Denotes location of well on United States Topographic Maps, scale 1 to 62,500, latitude and longitude lines being represented by border lines as shown.  
 - Denotes one inch spaces on border line of original tracing.

APR 27 1990



New Location..   
 Drill Deeper.....   
 Abandonment.....

4.77 S.  
 1.42 W.  
 9 SE (I-4)

Company TEAVEE OIL & GAS  
 Address CHARLESTON, W. VA.  
 Farm J. T. BOWYER HRS.  
 Tract 119 Acres 1450 Lease No. \_\_\_\_\_  
 Well (Farm) No. 5 Serial No. 64  
 Elevation (Spirit Level) 647 GR  
 Quadrangle WINFIELD - SW  
 County PUTNAM District SCOTT  
 Engineer JOHN GALPIN  
 Engineer's Registration No. 875  
 File No. \_\_\_\_\_ Drawing No. \_\_\_\_\_  
 Date 7/15/57 Scale 1" = 500'

STATE OF WEST VIRGINIA  
 DEPARTMENT OF MINES  
 OIL AND GAS DIVISION  
 CHARLESTON

**WELL LOCATION MAP**  
 FILE NO. PUT-639

+ Denotes location of well on United States Topographic Maps, scale 1 to 62,500, latitude and longitude lines being represented by border lines as shown.

- Denotes one inch spaces on border line of original tracing.

6-0-191 Deep Well



STATE OF WEST VIRGINIA  
DEPARTMENT OF MINES  
OIL AND GAS DIVISION

Quadrangle Winfield

WELL RECORD

Permit No. PUT - 639

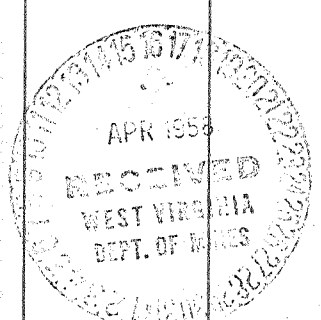
Oil or Gas Well Gas  
(KIND)

Company Teavee Oil & Gas, Inc.  
Address Charleston, W. Va.  
Farm John Bowyer, Hrs. Acres 1000  
Location (waters) Tanbark Creek  
Well No. 5-64 Elev. 647  
District Scott County Putnam  
The surface of tract is owned in fee by John Bowyer, Hrs.  
Address Winfield, W. Va.  
Mineral rights are owned by Same  
Address \_\_\_\_\_  
Drilling commenced July 23, 1957  
Drilling completed February 22, 1958  
Date Shot 11/26/57 From \_\_\_\_\_ To \_\_\_\_\_  
With 200# 8% Gel 5x16 600# Torpex  
Open Flow 6 /10ths Water in two 103,000 cf. Inch  
/10ths Merc. in \_\_\_\_\_ Inch  
Volume \_\_\_\_\_ Cu. Ft.  
Rock Pressure not taken lbs. \_\_\_\_\_ hrs.  
Oil \_\_\_\_\_ bbls., 1st 24 hrs.  
Fresh water \_\_\_\_\_ feet  
Salt water \_\_\_\_\_ feet

Casing and Tubing	Used in Drilling	Left in Well	Packers
Size			Kind of Packer <u>O.W.S.</u>
16			<u>Gas Anchor</u>
18	<u>53'</u>	<u>53'</u>	Size of <u>2x7x16</u>
10	<u>877' 3"</u>	<u>Pulled</u>	Depth set <u>4335' 3"</u>
8 1/4	<u>1547</u>	<u>Pulled</u>	
6 5/8	<u>2260'</u>	<u>2260'</u>	
5 3/16			
3			Perf. top <u>4435'</u>
2" Tubing	<u>4447'</u>	<u>4447'</u>	Perf. bottom <u>4447'</u>
Liners Used			Perf. top _____
			Perf. bottom _____

CASING CEMENTED \_\_\_\_\_ SIZE \_\_\_\_\_ No. Ft. \_\_\_\_\_ Date \_\_\_\_\_  
COAL WAS ENCOUNTERED AT \_\_\_\_\_ FEET \_\_\_\_\_ INCHES  
\_\_\_\_\_ FEET \_\_\_\_\_ INCHES FEET \_\_\_\_\_ INCHES  
\_\_\_\_\_ FEET \_\_\_\_\_ INCHES FEET \_\_\_\_\_ INCHES

Formation	Color	Hard or Soft	Top	Bottom	Oil, Gas or Water	Depth Found	Remarks
Surface			0	5			
Slate			5	35			
Sand			35	52			
Slate & Red Rock			52	496			
Sand			496	530			
Slate			530	675			
Sand			675	685			
Slate			685	740			
Sand			740	780	Water	750	5 BPH
Lime			780	796			
Sand			796	838			
Slate			838	877			
Lime			877	885			
Sand			885	912			
Slate			912	978			
Sand			978	1013			
Slate			1013	1068			
Sand			1068	1100			
Black Slate			1100	1225			
Salt Sand			1225	1251			
Slate			1251	1290			
Salt Sand			1290	1512	Water	1340	Hole Full
Litter Lime			1512	1538			
Big Lime			1538	1710	Water	1544' 8"	Hole Full
Slate & Shells			1710	1757			
Injun			1757	1827	Water	1762'	Hole Full
Slate & Shells			1827	2240			
Shale	Brown		2240	2251	Salt Sand	1092' 5"	H <sub>2</sub> O S. G.
Berea Sand			2251	2273			
Slate & Shells			2273	3435	Salt Sand	1126	H <sub>2</sub> O S. G.
Shale	Brown		3435	3475	& Injun		
Slate & Shells			3475	3620	Show of Oil in Berea		
Shale	Brown		3620	3695	Set 7" 20' in Berea		
Slate			3695	3740	Gas Show	3130'	
Shale	Brown		3740	3819	" "	3325'	
Slate			3819	3929	" "	3544'	
Shale	Brown		3929	3949	" "	3680'	
Slate			3949	4186	" "	3929'	



Formation	Color	Hard or Soft	Top <sup>4</sup>	Bottom	Oil, Gas or Water	Depth Found	Remarks
Shale	Brown		4186	4338	Gas Show	4168'	
Lime			4338	4420			
Orishaney			4420	4450			
Lime			4450	4455			
TOTAL DEPTH				4455			

Date March 11, 1958, 19

APPROVED TEAVEE OIL & GAS, INC., Owner

By John Galan  
(Title)  
Geologist