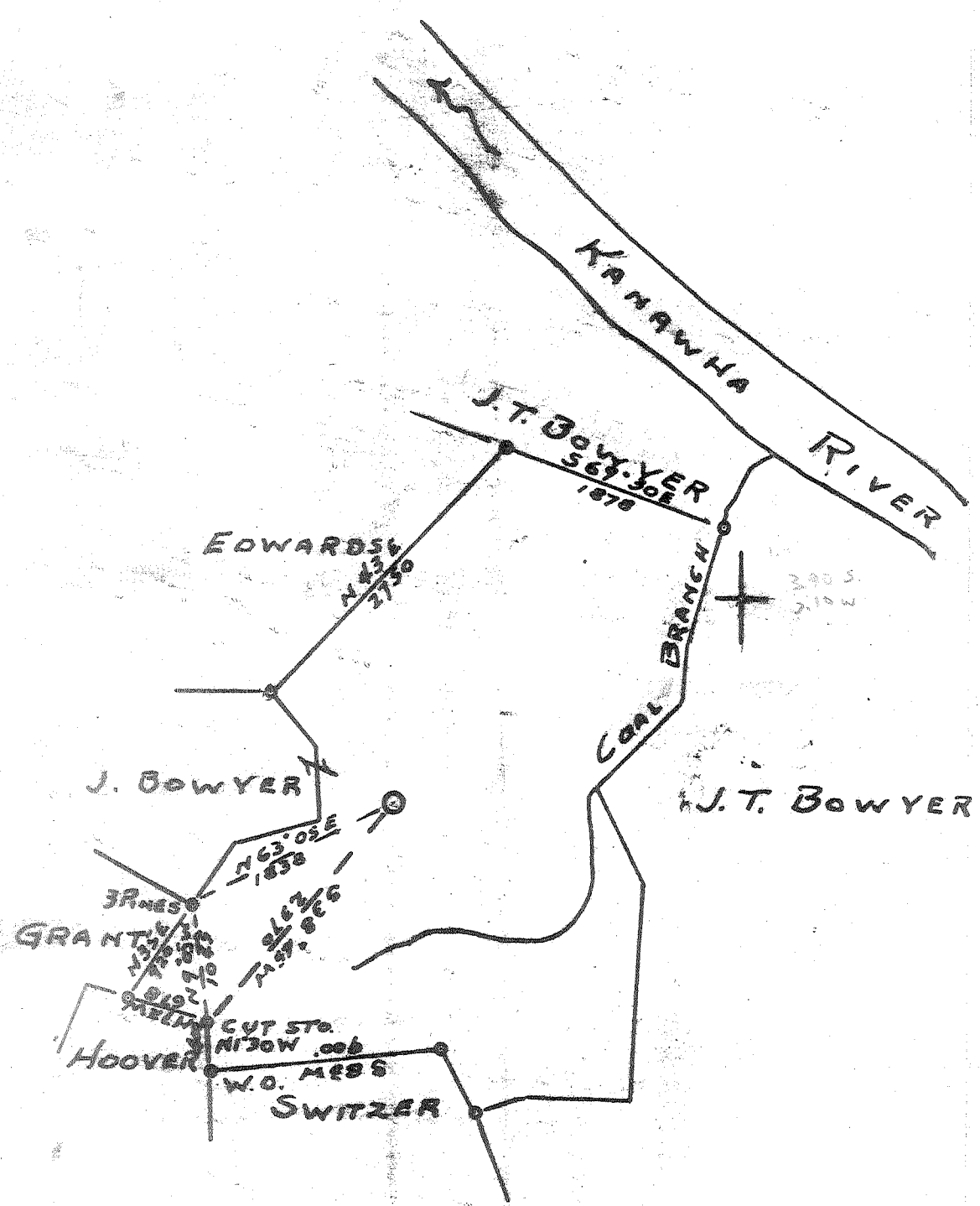


Latitude 38° 35'

Longitude 81° 55'



3,92 S.  
 2.15 W.  
 9 SC (I-4)

New Location   
 Drill Deeper   
 Abandonment

Company TRAVEE OIL & GAS  
 Address CHARLESTON, W.VA  
 Farm JOHN BOWYER HRS  
 Tract 365 Acres 1015 Lease No. \_\_\_\_\_  
 Well (Farm) No. 6 Serial No. T.V. 69  
 Elevation (Spirit Level) 924  
 Quadrangle WINFIELD - SW.  
 County PITMAN District SCOTT  
 Engineer JOHN GALPIN  
 Engineer's Registration No. 875  
 File No. \_\_\_\_\_ Drawing No. \_\_\_\_\_  
 Date 4-11-60 Scale 1" = 1320'

STATE OF WEST VIRGINIA  
 DEPARTMENT OF MINES  
 OIL AND GAS DIVISION  
 CHARLESTON

WELL LOCATION MAP  
 FILE NO. PUT-672

+ Denotes location of well on United States Topographic Maps, scale 1 to 62,500, latitude and longitude lines being represented by border lines as shown.

- Denotes one inch spaces on border line of original tracing.

No Samplers

6-6-111

Deep Well



STATE OF WEST VIRGINIA  
DEPARTMENT OF MINES  
OIL AND GAS DIVISION /0

Quadrangle Winfield

Permit No. PUT-672

**WELL RECORD**

Oil or Gas Well Gas  
(KIND)

Company Teavee Oil & Gas, Inc.  
 Address 1901 Kanawha Valley Building  
Charleston 1, West Virginia  
 Farm John Bowyer Hrs. Acres 1015  
 Location (waters) Kanawha River  
 Well No. 6 Elev. 924  
 District Scott County Putnam  
 The surface of tract is owned in fee by Bowyer Heirs  
c/o A. M. Brown, Adm. Address Winfield, W. Va.  
 Mineral rights are owned by Bowyer Heirs, c/o A. M.  
Brown, Adm. Address Winfield, W. Va.  
 Drilling commenced April 25, 1960  
 Drilling completed August 23, 1960  
 Date Shot \_\_\_\_\_ From \_\_\_\_\_ To \_\_\_\_\_  
 With \_\_\_\_\_  
 Open Flow 30/10ths Water in \_\_\_\_\_ 2 Inch  
 \_\_\_\_\_/10ths Merc. in \_\_\_\_\_ Inch  
 Volume \_\_\_\_\_ 231 M. Cu. Ft.  
 Rock Pressure Not Taken lbs. \_\_\_\_\_ hrs.  
 Oil \_\_\_\_\_ bbls., 1st 24 hrs.  
 WELL ACIDIZED \_\_\_\_\_  
 WELL FRACTURED \_\_\_\_\_

Casing and Tubing	Used in Drilling	Left in Well	Packers
Size			Kind of Packer
16			
13	27'	27'	
10	980'	980'	Size of
8 3/4	1808'	1715'	<u>PULLED</u>
6 5/8	2170'		Depth set
5 3/16			
3			Perf. top
2			Perf. bottom
Liners Used			Perf. top
			Perf. bottom

CASING CEMENTED 7" SIZE 2170 No. Ft. 10-4-60 Date  
by Well Service, Inc.

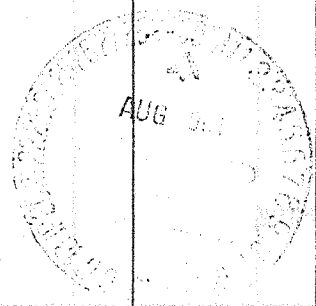
COAL WAS ENCOUNTERED AT \_\_\_\_\_ FEET \_\_\_\_\_ INCHES  
 \_\_\_\_\_ FEET \_\_\_\_\_ INCHES FEET \_\_\_\_\_ INCHES  
 \_\_\_\_\_ FEET \_\_\_\_\_ INCHES FEET \_\_\_\_\_ INCHES

RESULT AFTER TREATMENT \_\_\_\_\_

ROCK PRESSURE AFTER TREATMENT \_\_\_\_\_

Fresh Water \_\_\_\_\_ Feet Salt Water \_\_\_\_\_ Feet

Formation	Color	Hard or Soft	Top	Bottom	Oil, Gas or Water	Depth	Remarks
Red Mud			0	20			
Red Rock			20	46			
Blue Mud			46	62			
Red Rock			62	120			
White Slate			120	175			
Red Rock			175	198			
Slate			198	255			
Red Rock			255	268			
Sand			268	286			
Slate			286	377			
Sand			377	387			
Slate			387	402			
Sand			402	422			
Red Rock			422	472			
Sand			472	487			
Slate			487	506			
Sand			506	521			
Red Rock			521	531			
Sand			531	548			
Slate			548	568			
Red Rock			568	583			
Sand Stone			583	702			
Slate			702	732			
Sand			732	796			
Slate			796	823			
Lime Shell			823	835			
Slate			835	838			
Sand			838	885			
Slate			885	939			
Sand			939	949			



(over)

Deep Well

Formation	Color	Hard or Soft	Top /0	Bottom	Oil, Gas or Water	Depth Found	Remarks
Slate			949	997			
Sand			997	1107			Water 10/23 H.F.
Slate			1107	1117			
Sand			1117	1153			
Slate			1153	1177			
Sand			1177	1191			
Slate			1191	1197			
Lime Shell			1197	1211			
Slate			1211	1224			
Lime			1224	1239			
Slate			1239	1249			
Sand			1249	1345			
Slate			1345	1440			
Lime			1440	1455			
Sand			1455	1470			
Limey Sand			1470	1485			
Lime			1485	1536			
Limey Sand			1536	1554			
Lime			1554	1587			
Salt Sand			1587	1727			
Slate			1727	1741			
Red Rock			1741	1744			
Slate			1744	1764			
Little Lime			1764	1774			
Slate			1774	1779			
Little Lime			1779	1786			
Big Lime			1786	1967			
Injun Sand			1967	2073			Water 2012 H.F.
Slate & Shells			2073	2481			
Berea Grit			2481	2509			
Slate & Shells			2509	3648			Gas at 2857
Brown Shale			3648	3691			10/10 in 2"
Slate & Shells			3691	3824			
Brown Shale			3824	3896			
Slate & Shells			3896	3945			
Brown Shale			3945	4020			
Slate & Shells			4020	4375			
Marc. Shale			4375	4542			
Corniferous Lime			4542	4629			
Oriskany			4629	4637			Gas 4635, 4637
Total Depth				4637			
				4542	4629		
				924	924		
				3618	3705		

Date 7/29, 1961

APPROVED John D. S., Owner

By John S. S.  
(Title)