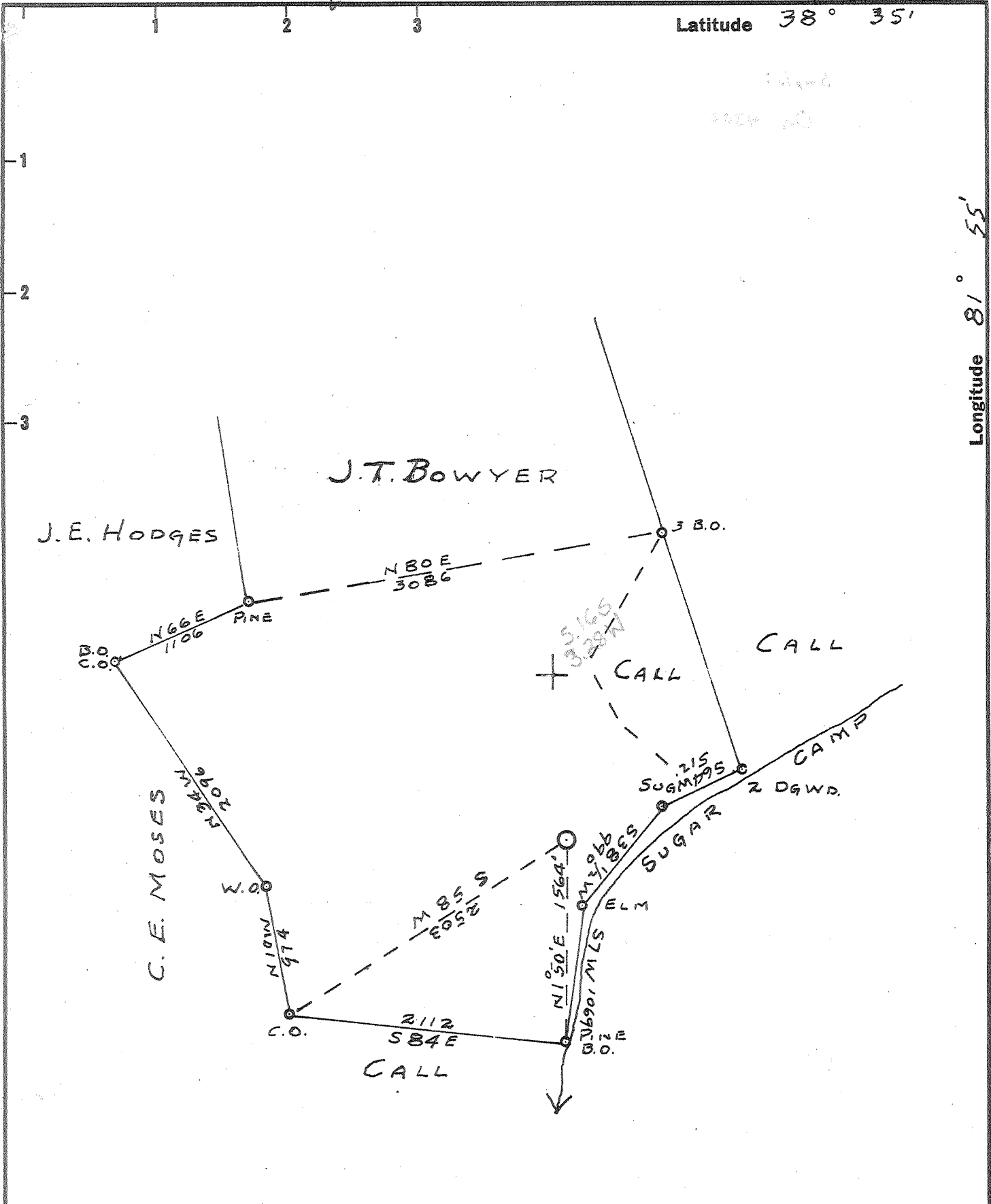


Latitude 38° 35'

Longitude 81° 55'



New Location
 Drill Deeper
 Abandonment

Company TEAVEE OIL AND GAS
 Address CHARLESTON, W.VA.
 Farm J.T. BOWYER
 Tract _____ Acres 400 Lease No. _____
 Well (Farm) No. 7 Serial No. T.V. 71
 Elevation (Spirit Level) 656. D.F.
 Quadrangle WINFIELD SW
 County PUTNAM District TEAYS VALLEY
 Engineer JOHN GALPIN
 Engineer's Registration No. 875
 File No. _____ Drawing No. _____
 Date 9-29-60 Scale 1" = 400'

STATE OF WEST VIRGINIA
 DEPARTMENT OF MINES
 OIL AND GAS DIVISION
 CHARLESTON

WELL LOCATION MAP
 FILE NO. PUT-675

+ Denotes location of well on United States Topographic Maps, scale 1 to 62,500, latitude and longitude lines being represented by border lines as shown.
 - Denotes one inch spaces on border line of original tracing.

DEEP WELL (Tuscarora) RedHouse (191)

RECEIVED



MAR 30 1983

STATE OF WEST VIRGINIA DEPARTMENT OF MINES

OIL AND GAS DIVISION

Oil and Gas Division

WELL RECORD

Quadrangle Winfield

Point No. PUT-675

Rotary Cable Recycling Water Flood Disposal On Gas Dry Comb Storage (Kind)

Company Teavee Oil & Gas, Inc. Address 1901 Kanawha Valley Bld. Charleston, W. Va. Well No 7 (TV-71) Elev 656' District Teays Valley County Putnam

Coal was encountered at Fresh water Producing Sand None

Table with columns: Formation, Color, Hard or Soft, Top Feet, Bottom Feet, Oil, Gas or Water, Remarks. Rows include Surface, Slate, Red Rock, Sand, Limestone, etc.

* Indicates Electric Log tops in the remarks section.

(over)

FILED

Formation	Color	Hard or Soft	Top Feet	Bottom Feet	Oil, Gas or Water	Remarks
Slate			1340	1342		
Maxon Sand			1342	1556		
Pencil Cave			1556	1558		
Big Lime			1558	1700		
Big Injun			1700	1750		
Slate			1750	1767		
Water Sand			1767	1829		
Weir Shale			1829	2036		
Slate & Shells			2036	2230		
Coffee Shale			2230	2245		
Berea			2245	2272		Log 22 48 - 22 68
Slate & Shells			2272	3575		
White Slate			3575	3585		
Slate & Shells			3585	3628		
Brown Shale			3628	3675		Gas 3635 Show
White Slate			3675	3703		
Brown Shale			3703	3800		
White Slate			3800	4158		
Marcellus Shale		(Rhinostrat)	4158	4302		
Corniferous Lime		(Onondaga)	4302	4381		
Oriskany			4381	4411		
Licking Creek LS			4411	4472		
New Scotland			4472	4491		
Keyser LS			4491	4570		
Salina Group			4570	5058		
Newberg Sand		and McKenzie	5058	5295		
Keefer Sandstone			5295	5325		
Rose Hill		upper	5325	5618		
Brassfield Group		Dol.	5618	5631		
Shale		lower Rose Hill	5631	5698		
Tuscarora			5698	5719		
Shale			5719	5773		
Total Depth			5773			

all exploratory

5773
7411
[Signature]

Date July 22 19 74

APPROVED Teavee Oil & Gas, Inc. Date

By *[Signature]*
(Title)