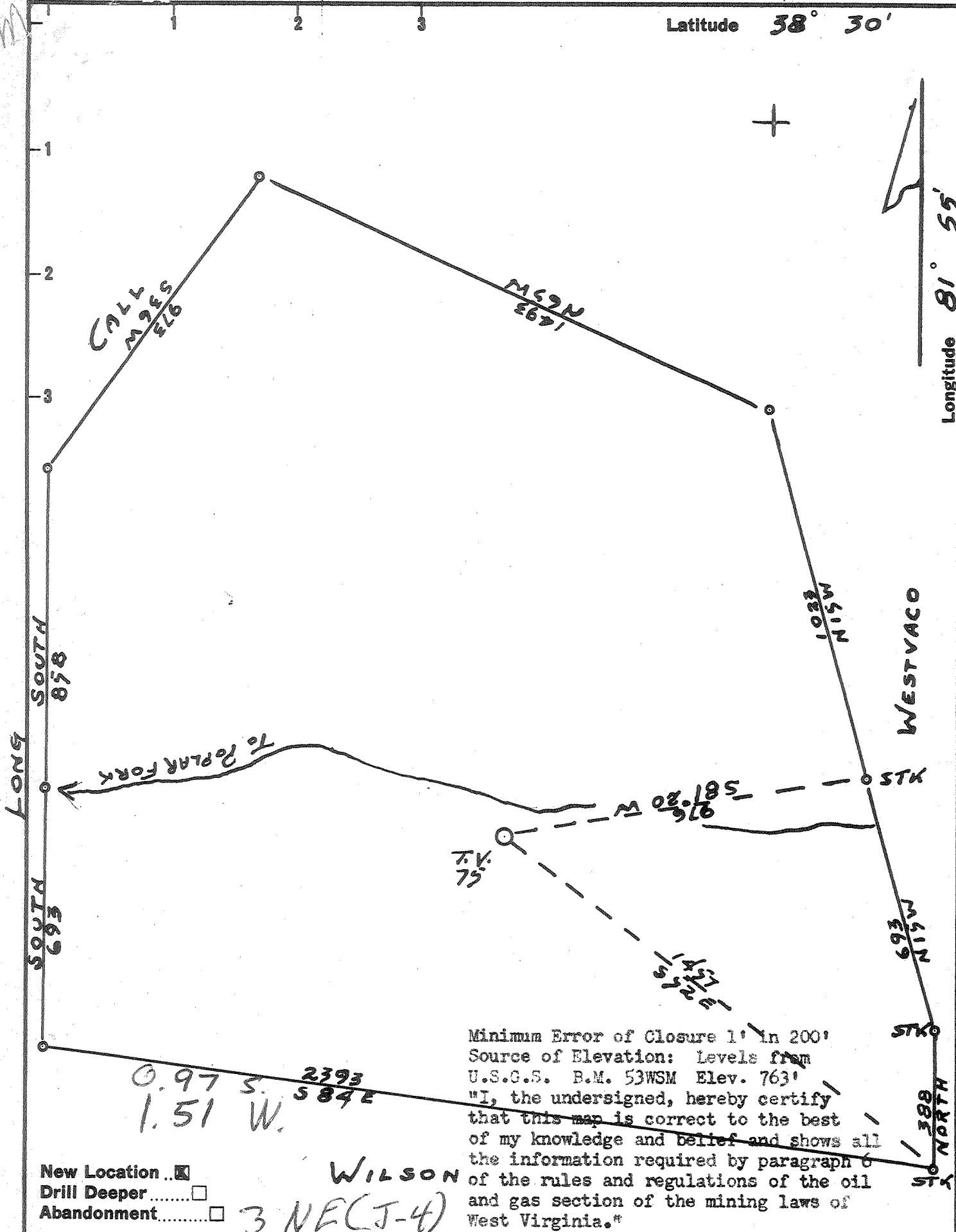


Latitude 38° 30'

Longitude 81° 55'



Minimum Error of Closure 1' in 200'  
 Source of Elevation: Levels from  
 U.S.G.S. B.M. 53WSM Elev. 763'  
 "I, the undersigned, hereby certify  
 that this map is correct to the best  
 of my knowledge and belief and shows all  
 the information required by paragraph 6  
 of the rules and regulations of the oil  
 and gas section of the mining laws of  
 West Virginia."

New Location   
 Drill Deeper   
 Abandonment

WILSON

3 NE(J-4)

Company TEAYE O&G INC.  
 Address CHARLESTON, W. VA  
 Farm HOMER WEST  
 Tract 142 Acres 113 1/2 Lease No. \_\_\_\_\_  
 Well (Farm) No. 1 Serial No. T.V. 75  
 Elevation (Spirit Level) 685.5  
 Quadrangle ST. ALBANS - NW  
 County PUTNAM District SCOTT  
 Engineer JOHN GALPIN  
 Engineer's Registration No. 875  
 File No. \_\_\_\_\_ Drawing No. \_\_\_\_\_  
 Date 6-15-64 Scale 1" = 330'

STATE OF WEST VIRGINIA  
 DEPARTMENT OF MINES  
 OIL AND GAS DIVISION  
 CHARLESTON

WELL LOCATION MAP  
 FILE NO. PUT-705

+ Denotes location of well on United States  
 Topographic Maps, scale 1 to 62,500, lat-  
 itude and longitude lines being represented  
 by border lines as shown.  
 - Denotes one inch spaces on border line  
 of original tracing.

No Samples 6-2-64 1191 Deep Well



STATE OF WEST VIRGINIA  
DEPARTMENT OF MINES  
OIL AND GAS DIVISION 24

Rotary   
Spudder   
Cable Tools   
Storage

Quadrangle St. Albans  
Permit No. PUT-705

WELL RECORD

Oil or Gas Well Gas  
(KIND)

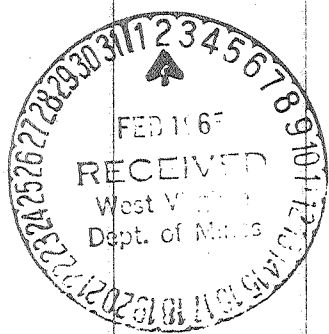
Company Teavee Oil & Gas, Inc.  
Address Charleston, West Virginia  
Farm Homer West Acres 113 1/2  
Location (waters) Poplar Fork  
Well No. TV-75 Elev. 685.5  
District Scott County Putnam  
The surface of tract is owned in fee by Homer West  
Address Scott Depot, W.Va.  
Mineral rights are owned by Homer West  
Address Scott Depot, W.Va.  
Drilling commenced July 20, 1964  
Drilling completed December 29, 1964  
Date Shot Not Shot From \_\_\_\_\_ To \_\_\_\_\_  
With \_\_\_\_\_  
Open Flow \_\_\_\_\_ /10ths Water in \_\_\_\_\_ Inch  
\_\_\_\_\_ /10ths Merc. in \_\_\_\_\_ Inch  
Volume 52,000 Cu. Ft.  
Rock Pressure Not Taken lbs. \_\_\_\_\_ hrs.  
Oil \_\_\_\_\_ bbls., 1st 24 hrs.  
WELL ACIDIZED \_\_\_\_\_  
WELL FRACTURED \_\_\_\_\_

Casing and Tubing	Used in Drilling	Left in Well	Packers
Size			
16			Kind of Packer _____
13			<u>Anchor</u>
10	30'	30'	Size of <u>2 x 5</u>
8 1/2			<u>Gas Anchor</u>
<del>8 1/2</del> 7	1146'	1146'	Depth set <u>4345'</u>
5 <del>3/4</del> 3/4	1913'	1913'	
3	with bottom hole packer		Perf. top _____
2	1432'	1432'	Perf. bottom _____
Liners Used			Perf. top _____
			Perf. bottom _____

CASING CEMENTED \_\_\_\_\_ SIZE 10" No. Ft. 30 Date \_\_\_\_\_  
COAL WAS ENCOUNTERED AT \_\_\_\_\_ FEET \_\_\_\_\_ INCHES  
\_\_\_\_\_ FEET \_\_\_\_\_ INCHES \_\_\_\_\_ FEET \_\_\_\_\_ INCHES  
\_\_\_\_\_ FEET \_\_\_\_\_ INCHES \_\_\_\_\_ FEET \_\_\_\_\_ INCHES

RESULT AFTER TREATMENT \_\_\_\_\_  
ROCK PRESSURE AFTER TREATMENT \_\_\_\_\_  
Fresh Water \_\_\_\_\_ Feet \_\_\_\_\_ Salt Water \_\_\_\_\_ Feet \_\_\_\_\_

Formation	Color	Hard or Soft	Top	Bottom	Oil, Gas or Water	Depth	Remarks
Surface			0	2			
Shaley Rock			2	15			
Red Rock			15	20			
Slate			20	45			
Blue Slate			45	73			
Red Rock			73	100			
Blue Slate			100	171			
Blue Rock			171	272			
Slate & Red Rock			272	331			
Slate			331	360			
Sand			360	378			
Slate			378	514			
Sand			514	530			
Slate			530	544			
Slate & Shells			544	654			
Sand			654	695			
Slate & Shells			695	815			
Sand			815	827			
Slate & Shells			827	924			
Slate-Limey Hard			924	984			
Sand			984	1025			
Slate & Shells			1025	1103			
Cow Run Sand			1103	1325			
Salt Sand			1325	1497			
Little Lime			1497	1507			
Brake			1507	1509			
Big Lime			1509	1680	Gas Show	1597	
Slate Brake			1680	1682			
Injun Sand			1682	1750			



Formation	Color	Hard or Soft	Top 24	Bottom	Oil, Gas or Water	Depth Found	Remarks
Slate			1750	2198			
Coffee Shale			2198	2211			
Berea Grit			2211	2236	Gas Show		
Slate			2236	3395			
Brown Shale			3395	3430			
Slate			3430	3523			
Brown Shale			3523	3660			
White Slate			3660	3690			
Brown Shale-Light			3690	3730			
White Slate			3730	3750			
Brown Shale			3750	3795			
White Slate			3795	3815			
Brown Shale			3815	3830			
White Slate			3830	3910			
Brown Shale-Light			3910	3940			
White Slate			3940	4149			
Marcellus			4149	4303			
Corniferous Lime			4303	4398			
Oriskany			4398	4404			
Corniferous			4404	4437			
					gas = 37 MCF Natural		(Shale & Berea Gas 2/10 - 1" = 15 MCF)
TOTAL DEPTH				4437			

Date January 29, 19 65

APPROVED TEAVEE OIL & GAS, INC., Owner

By [Signature]  
Vice-President (Title)