

PROPOSED LOCATION
ELEV. 588.64

ED. HUGHES
96 ACRES

CHARLES H. GOTT

H.S.B. THOMAS

JOHN MILTON
10 1/2 AC. ±

U.S.G.S. BM. LOCATED
IN BRIDGE ABUTMENT
ELEV. 591.

ELEVATION BY SPIRIT LEVELING FROM U.S.G.S. BM.
SHOWN ON PLAT
ACCURACY 1 PART PER 2000'

"I, the undersigned, hereby certify that this map is correct to the best of my knowledge and belief and shows all the information required by paragraph 6 of the rules and regulations of the oil and gas section of the mining laws of West Virginia."

March 29, 1979

Company STEVE DUCKWORTH (OFFICE OF OIL & GAS)
 Address Box 222 - Gassaway, W.Va. 26624
 Farm ED. HUGHES
 Tract Acres 96 Lease No. _____
 Well (Farm) No. 1 Serial No. 5
 Elevation (Spirit Level) 588.64
 Quadrangle CHARLESTON - NW
 County PUTNAM District POCOTALICO
 Engineer J. A. Hobbs
 Engineer's Registration No. 1341
 File No. _____ Drawing No. _____
 Date SEPT. 6, 1967 Scale 1" = 200

STATE OF WEST VIRGINIA
DEPARTMENT OF MINES
OIL AND GAS DIVISION
CHARLESTON

WELL LOCATION MAP
FILE NO. PUT-732-R-P

+ Denotes location of well on United States Topographic Maps, scale 1 to 62,500, latitude and longitude lines being represented by border lines as shown.
 — Denotes one inch spaces on border line of original tracing.

MAY 3 1979
47-079

Deep Well

PROPOSED LOCATION
ELEV. 588.64

ED. HUGHES
96 ACRES

CHARLES H. GOTT

H.S.B. THOMAS

JOHN MILTON
10 1/2 AC. ±

U.S.G.S. BM. LOCATED
IN BRIDGE ABUTMENT
ELEV. 591.

ELEVATION BY SPIRIT LEVELING FROM U.S.G.S. BM.
SHOWN ON PLAT
ACCURACY 1 PART PER 2000'

- New Location
- Drill Deeper
- Redrill
- Abandonment

"I, the undersigned, hereby certify that this map is correct to the best of my knowledge and belief and shows all the information required by paragraph 6 of the rules and regulations of the oil and gas section of the mining laws of West Virginia."

Company L.G. BURDETTE, D.B.A. BURDETTE OIL & GAS CO.

Address 7 1/2 SPRING ST. CHARLESTON, W.VA

Farm ED. HUGHES

Tract Acres 96. Lease No. _____

Well (Farm) No. 1 Serial No. 5

Elevation (Spirit Level) 588.64

Quadrangle CHARLESTON - NW

County PUTNAM District POCOTALICO

Engineer J. A. [Signature]

Engineer's Registration No. 1341

File No. _____ Drawing No. _____

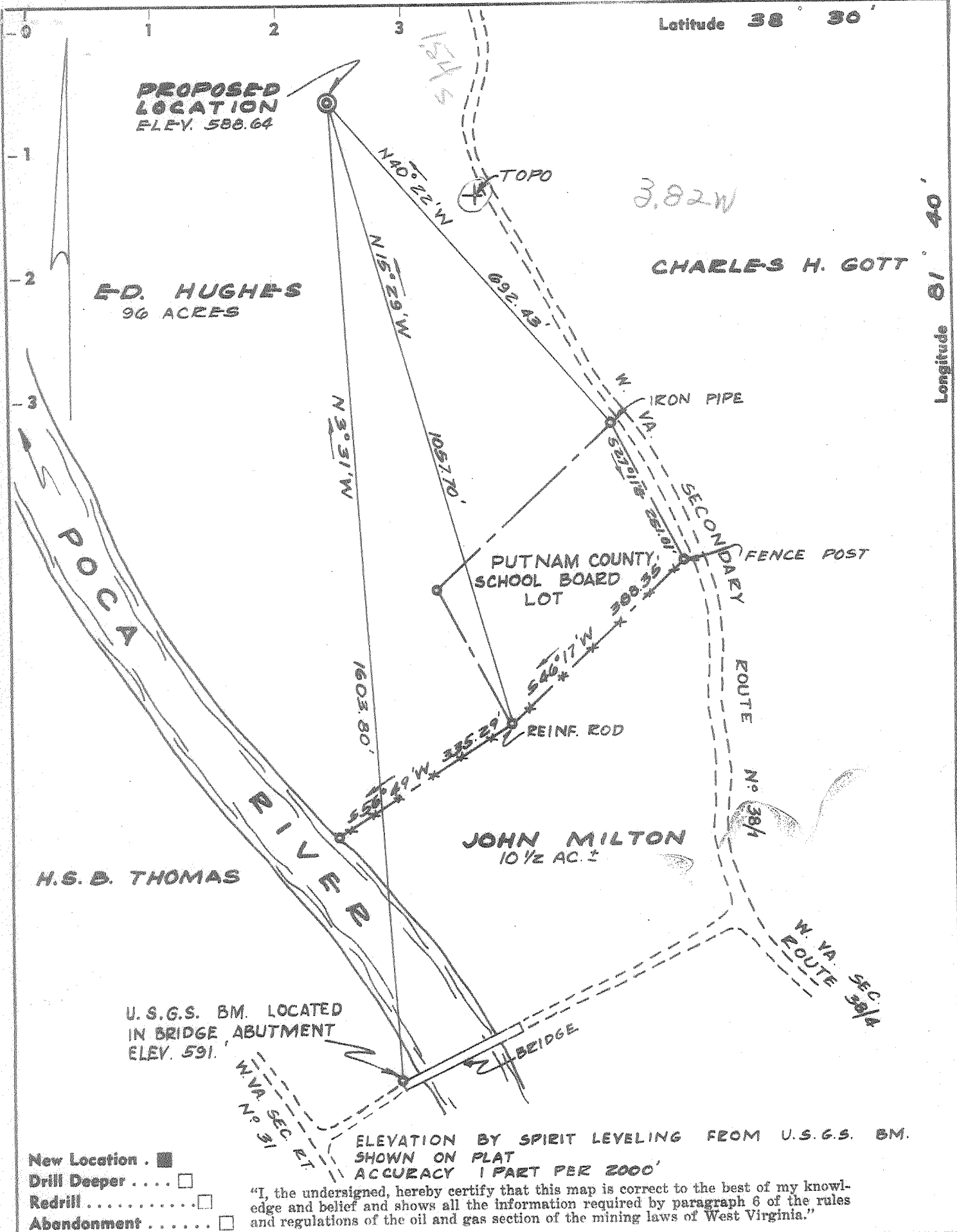
Date SEPT. 6, 1967 Scale 1" = 200'

STATE OF WEST VIRGINIA
DEPARTMENT OF MINES
OIL AND GAS DIVISION
CHARLESTON

WELL LOCATION MAP
FILE NO. PUT-732-P

+ Denotes location of well on United States Topographic Maps, scale 1 to 62,500, latitude and longitude lines being represented by border lines as shown.

— Denotes one inch spaces on border line of original tracing.



- New Location .
- Drill Deeper
- Redrill
- Abandonment

ELEVATION BY SPIRIT LEVELING FROM U.S.G.S. BM. SHOWN ON PLAT ACCURACY 1 PART PER 2000'

"I, the undersigned, hereby certify that this map is correct to the best of my knowledge and belief and shows all the information required by paragraph 6 of the rules and regulations of the oil and gas section of the mining laws of West Virginia."

Company L. G. BURDETTE, D.B.A. BURDETTE OIL & GAS CO.
 Address 7 1/2 SPRING ST. CHARLESTON, W.VA.
 Farm ED. HUGHES
 Tract _____ Acres 96. Lease No. _____
 Well (Farm) No. 1 Serial No. 5
 Elevation (Spirit Level) 588.64
 Quadrangle CHARLESTON - NW
 County PUTNAM District POCATAHICO
 Engineer J. A. Holman
 Engineer's Registration No. 1341
 File No. _____ Drawing No. _____
 Date SEPT. 6, 1967 Scale 1" = 200

STATE OF WEST VIRGINIA
 DEPARTMENT OF MINES
 OIL AND GAS DIVISION
 CHARLESTON
WELL LOCATION MAP
 FILE NO. PUT-732

+ Denotes location of well on United States Topographic Maps, scale 1 to 62,500, latitude and longitude lines being represented by border lines as shown.

- Denotes one inch spaces on border line of original tracing.

Deep Well



STATE OF WEST VIRGINIA
DEPARTMENT OF MINES
OIL AND GAS DIVISION

Rotary
Spudder
Cable Tools
Storage

Quadrangle.....

Permit No. PUT-732

WELL RECORD

Oil or Gas Well Gas
(KIND)

Company Burdette Oil & Gas Company
Address 7 1/2 Spring St., Chas., W. Va.
Farm E. D. Hughes Acres.....

Location (waters).....
Well No. One Elev. 589
District Pocatalico County Putnam

The surface of tract is owned in fee by.....
Address.....
Mineral rights are owned by E. D. Hughes
Poca, W. Va. Address.....

Drilling commenced September 6, 1967
Drilling completed September 17, 1967
Date Shot..... From..... To.....
With.....

Open Flow /10ths Water in..... Inch
 /10ths Merc. in..... Inch
Volume 600,000 Cu. Ft.
Rock Pressure..... lbs..... hrs.
Oil..... bbls., 1st 24 hrs.

WELL ACIDIZED (DETAILS).....
WELL FRACTURED (DETAILS) 20,000# Sand 800 BB Water

RESULT AFTER TREATMENT (Initial open Flow or bbls.) 2,000,000 MCF
ROCK PRESSURE AFTER TREATMENT..... HOURS.....
Fresh Water 80 Feet..... Salt Water..... Feet.....
Producing Sand..... Depth.....

Casing and Tubing	Used in Drilling	Left in Well	Packers
Size			Kind of Packer
16			
13 3/8		63'	
9 5/8		1711'	Size of
7		5268'	Depth set
6 1/2			
5 3/16			
4 1/2			
3			Perf. top
2 3/8		5320'	Perf. bottom
Liners Used			Perf. top
			Perf. bottom

Attach copy of cementing record.
CASING CEMENTED..... SIZE..... No. Ft..... Date.....
Amount of cement used (bags).....
Name of Service Co.....
COAL WAS ENCOUNTERED AT..... FEET..... INCHES.....
..... FEET..... INCHES..... FEET..... INCHES.....
..... FEET..... INCHES..... FEET..... INCHES.....

Formation	Color	Hard or Soft	Top	Bottom	Oil, Gas or Water	Depth	Remarks
Surface			0	10			
River Sand			10	45			
Sd. Stone			45	80			
Shale, Sand & R. R.			80	210			
Sand			210	285			
Sand & Shale			285	425			
Sandy Lime			425	505			
Sandy Shale			505	915			
Sand			915	1070			
Sand & Shale			1070	1150			
Sand			1150	1420			
Lime			1420	1580			
Sand			1580	1625			
Sandy Shale			1625	1870			
Shale			1870	2080			
Sand Be			2080	2091			
Shale <i>lit in Des</i>			2091	4510			
Lime			4510	4596			
Sand <i>Oriskany</i>			4596	4620	Gas 4605	280 MCF	
Lime			4620	5331			
Sand <i>Newburg?</i>			5331	5340			
Lime			5340	5375	Gas 5335	600 MCF	

P.D. Sand open hole production from 5332 to 5346 Newburg

