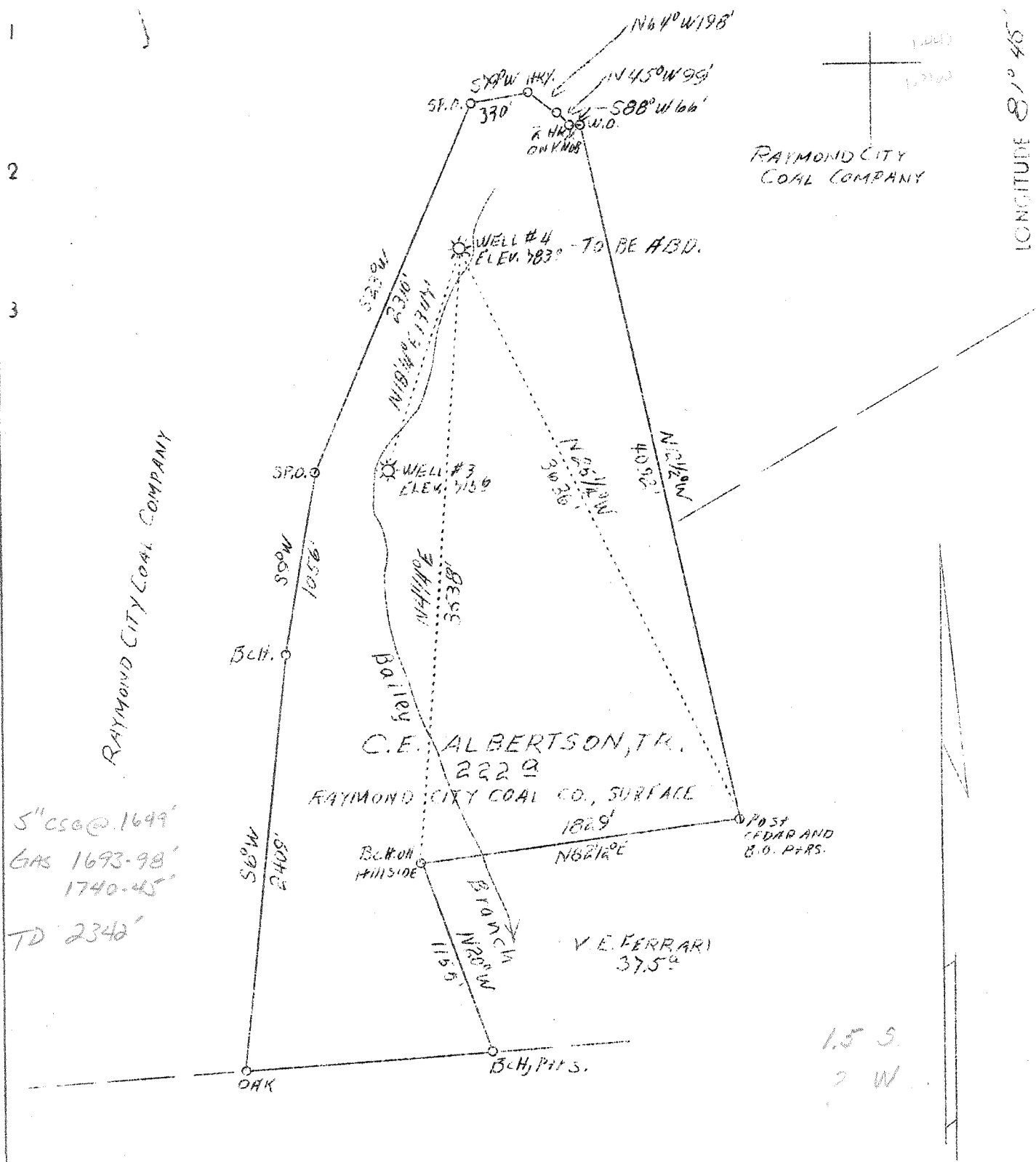


LATITUDE 38° 30'

LONGITUDE 81° 45'



5" CSO @ 1649'
 GAS 1693-98'
 1740-45'
 TD 2342'

ABD. - PERMIT ISSUED: 7-25-38

Company Address	West Virginia Gas Corp., 401 Union Bldg., Charleston, W. Va.
Farm Tract	Raymond City Coal Co., 10
Acres	222
Lease No.	WV293
Well (Farm) No.	Four
Serial No.	0-19
Elevation	783.0 (Stadia)
Quadrangle	St. Albans N. E.
County	Putnam
District	Pocatalico
Engineer	Robert S. Hyde
Eng. Reg. No.	646
File No.	3 Drawing No. R. O.
Date	7-28-38 - Scale 1" = 800'

STATE OF WEST VIRGINIA
 Department of Mines
 OIL & GAS DIVISION
 Charleston

WELL LOCATION MAP

File No. Put-50-A

X Denotes location of well on U. S. Topographic Maps, scale 1 to 62,500, latitude and longitude lines being represented by border lines as shown.

- Denotes one inch spaces on border line of original tracing.