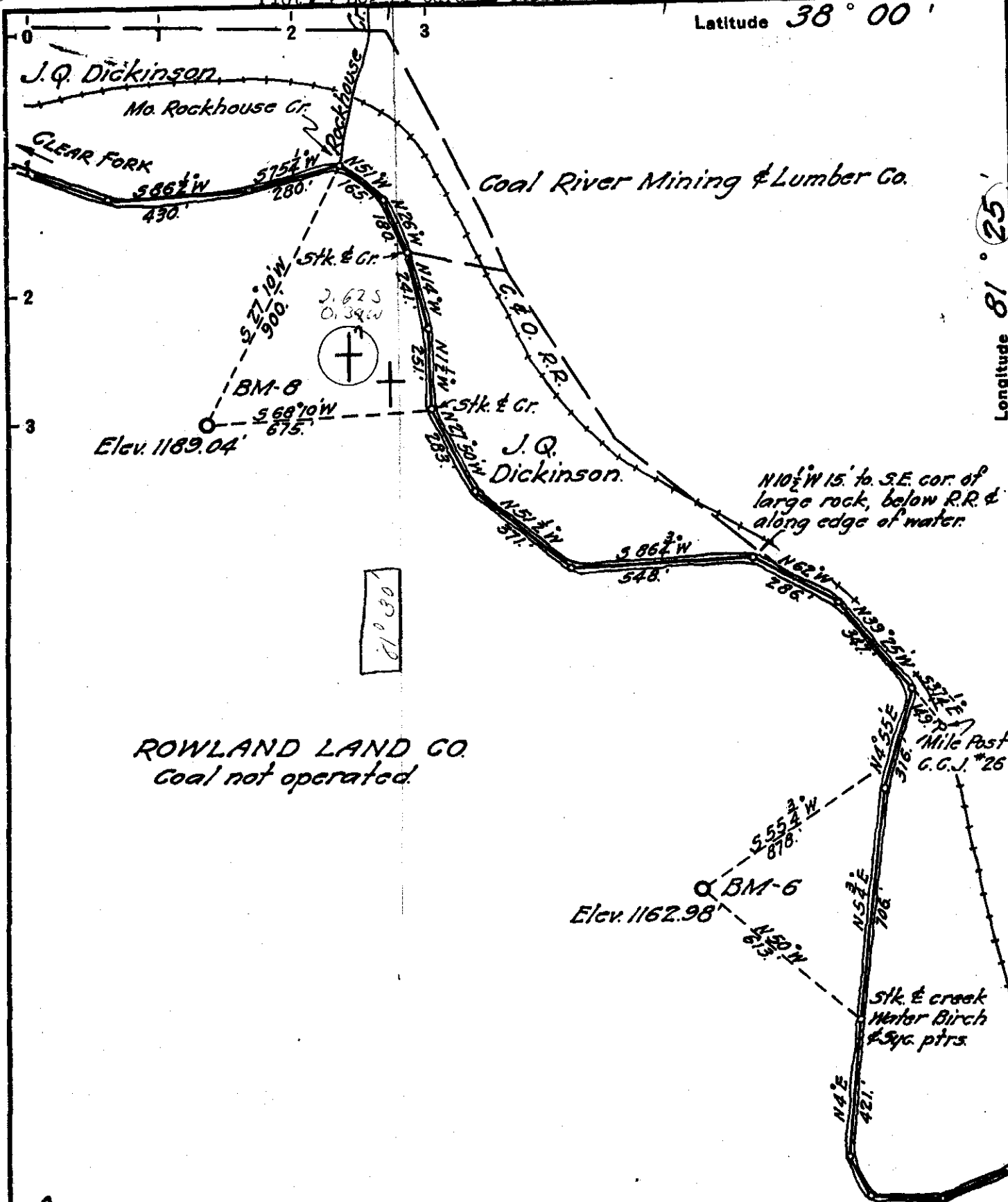


Longitude 81° 25'
this long. no on quad map.



ROWLAND LAND CO.
Coal not operated.

Fracture well # BM-8

- New Location...
- Drill Deeper.....
- Abandonment.....

Company	BIG MARSH OIL CO.
Address	CHARLESTON W.VA.
Farm	ROWLAND LAND CO.
Tract	Acres 6000 Lease No. 1
Well (Farm) No.	6 # 8 Serial No. BM-8
Elevation (Spirit Level)	AS SHOWN
Quadrangle	BALD KNOB NE
County	RALEIGH District CLEAR FORK
Engineer	J.A. Moore
Engineer's Registration No.	662
File No.	68-31 Drawing No.
Date	July 30, 1946 Scale 1" = 400'

STATE OF WEST VIRGINIA
DEPARTMENT OF MINES
OIL AND GAS DIVISION
CHARLESTON
RAL-74-W
WELL LOCATION MAP
FILE NO. RAL-13; No. 6
RAL-14 No. 8 - Jones

- + Denotes location of well on United States Topographic Maps, scale 1 to 62,500, latitude and longitude lines being represented by border lines as shown.
- Denotes one inch spaces on border line of original tracing.

WEST VIRGINIA DEPARTMENT OF MINES
OIL & GAS DIVISION
W E L L R E C O R D

Gas Well
CASING & TUBING

Permit No. Ral 74		
Bald Knob Quad.		
Company	Big Marsh Oil Company	
Address	P.O. Box 1273, Charleston 25, W.Va.	
Farm	Rowland Land Co. Acres 6000	
Location	Clear Fork	10 $\frac{1}{2}$ 426
Well No.	BM-8 Elev. 1189.04 Gr.	7 2247
District	Clear Fork Raleigh County	
Surface		
Mineral	Rowland Land co. P.O. Box 586, St. Albans, W.Va.	
Commenced	10-31-46	Bottom Hole Packer
Completed	2-14-47	Size-not shown
Not shot		
Rock Pressure	743 lbs. 48 hrs.	Coal at 88' 24"
Salt Water	1075-1085 2 BW	

Surface	0	12	Slate	2560	2567
Sand	12	40	Weir Sand	2567	2680
Slate	40	88	Slate	2680	2684
Coal	88	94	Total Depth		2684
Sand	90	218			
Slate	218	250	Gas show 2350		
Sand	250	285	Gas 2505 show		
Slate	285	340	Gas 2644-2653		
Lime	340	400	Gas 2664		
Slate	400	420	Gas 2665		
Lime	420	426	Gas 2668-2670		
Slate	426	460	Gas 2673-2680		
Sand	460	470			
Slate & Shells	470	505			
Sand	505	515			
Slate	515	535			
Sand	535	670			
Slate	570	685			
Sand	685	720			
Slate	720	735			
Sand	735	745			
Sand	745	840			
Slate & Shells	840	920	Gas 763 no test		
Salt Sand	920	1260			
Slate	1260	1285			
Sand	1285	1293			
Slate & Shells	1295	1385			
Sand	1385	1426			
Slate & Shells	1426	1445			
Sand	1445	1540			
Slate & Shells	1540	1575			
Sand	1575	1595			
Lime	1595	1615			
Slate	1615	1680			
Lime	1640	1655			
Slate	1655	1670			
Red Rock	1670	1695			
Lime	1695	1715			
Red Rock	1715	1815			
Slate	1815	1900			
Red Rock	1900	1970			
Lime	1970	1980			
Slate	1980	2010			
Lime	2010	2020			
Slate	2020	2070			
Lime	2070	2085			
Slate	2085	2110			
Lime	2110	2118			
Slate	2118	2142			
Little Lime	2142	2200			
Slate <i>P.C.P.</i>	2200	2206			
Big Lime	2206	2540			
Injun Sand	2540	2560			

38-00
BK 3-35

RECEIVED

JUN 29 1973

OIL & GAS DIVISION
DEPT. OF MINES

Big Marsh Oil Company
P. O. Box 1273
Charleston, W.Va. 25325

FRACTURE RECORD

Well Name and No: Rowland Land Co. # BM-8

District: Clear Fork County: Raleigh

Permit No: RAL-74-FRAC. Completion Date: 11-10-70

Formation Fractured: Material:
Top 2567 } Weir 50,000# of 20/40 sand
Bottom 2680 } and 500 bbls of Fluid

Rock Pressure: Test after Fracture:
Before Fracture 420# (83-70) Oil —
After Fracture 380# (98ha) Gas 3586 mcf NOLL

Joseph E. Campbell
Signature
6-26-73
Date