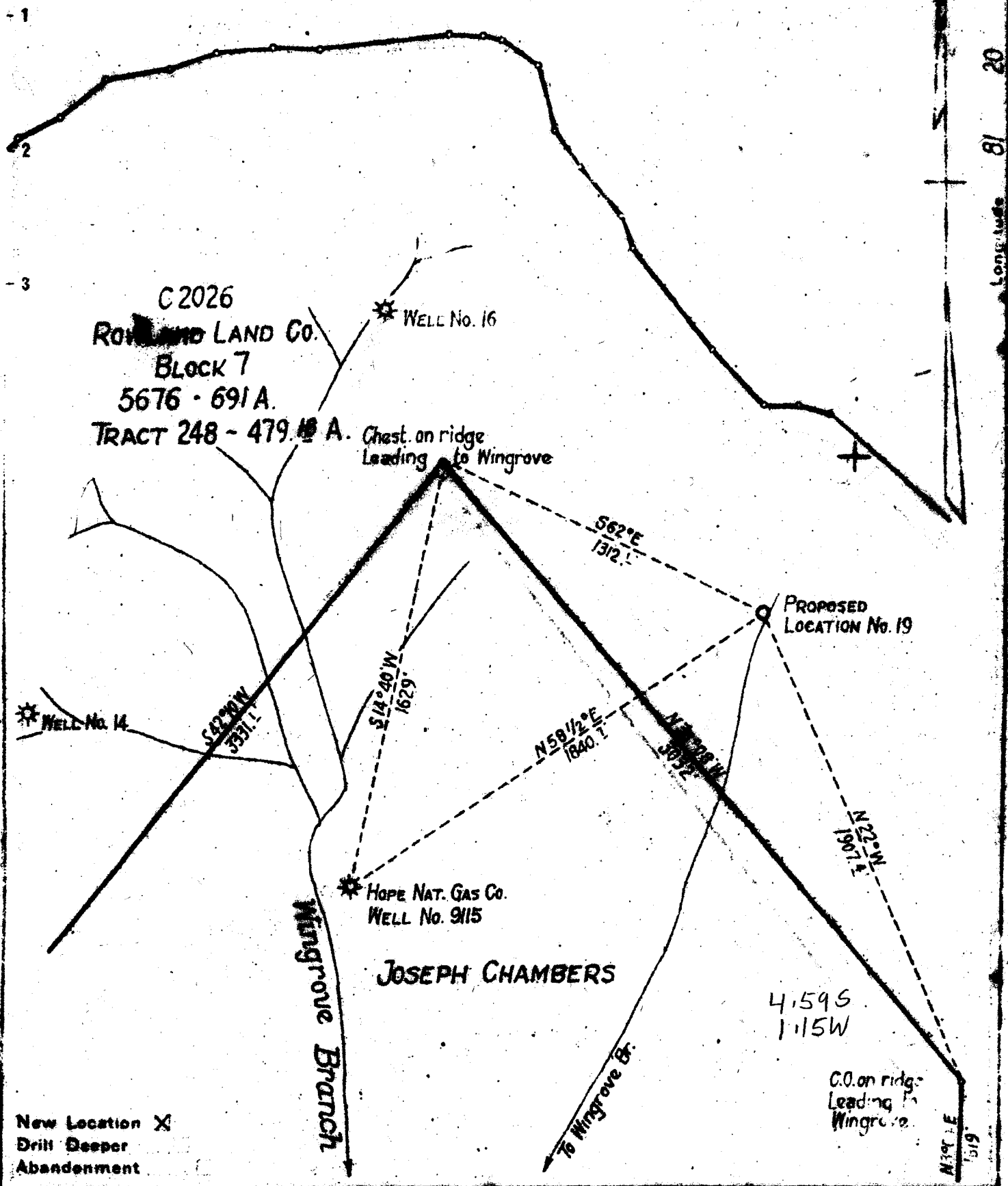


Latitude 37 55

ROWLAND LAND CO.



New Location X
Drill Deeper
Abandonment

Company	COLUMBIAN CARBON COMPANY		
Address	Box 873 CHARLESTON, W.VA.		
Farm	ROWLAND LAND COMPANY		
Tract	248	Acres	47
Lease No.	C 2026		
Well (Farm) No.	19	Serial No.	
Elevation (Spirit Level)	2442 32		
Quadrangle	ECCLES 5 S450 W118		
County	RALEIGH	District	CLEAR FORK
Engineer	C. A. Branham		
Engineer's Registration No.	683		
File No.		Drawing No.	
Date	DEC. 1, 1947.		
Scale	1" = 500'		

STATE OF WEST VIRGINIA
DEPARTMENT OF MINES
OIL AND GAS DIVISION
CHARLESTON

WELL LOCATION MAP

FILE NO. RAL-112

+ Denotes location of well on United States Topographic Maps, scale 1 to 62,500, latitude and longitude lines being represented by border lines as shown.

- Denotes one inch spaces on border line of original tracing.

WEST VIRGINIA DEPARTMENT OF MINES
OIL & GAS DIVISION
W E L L R E C O R D

Permit No. Ral 112
Eccles Quad.
Company
Address
Farm
Location
Well No.
District
Surface
Mineral
Commenced
Completed
Not shot
Open flow
Volume
Rock Pressure
Fresh Water
Salt Water

Columbian Carbon Co.
Box 873, Charleston 23, W.Va.
Rowland Land Co. A 47
Wingrove Br.
19 GW 997 Elev. 2442.25' G
Clear Fork Raleigh County
Rowland Land Co., St. Albans, W.Va.
Same
2-21-48
5-13-48

11/10ths M in 7" 22#
1,431,000 C.F.
400 lbs. 16 hrs.
115' 1-10" blr. per hr.
1610' 1/2 blr. per hr.

Gas Well
CASING & TUBING

13 3/8	48#	32	32
10 3/4		908' 6	Pld.
8 1/2	24#	2230' 9	Same
2 3/8	4#	2232' 5	Same

Midget Btm. Hole Packer
Size 8 5/8"
Depth 2214 SLM

Coal at 43' 60"; 73'
72"; 87' 48"; 507'
36"; 1364' 48"; 1522'
24"

Sand and Gravel	0	12	Sand	1607	1747
Sand	12	39	Slate	1747	1781
Slate	39	43	Lime	1781	1844*
Coal	43	48	Red Rock	1844	1854
Slate	48	64	Lime	1854	1885
Sand	64	71	Sand	1885	1941
Slate	71	73	Red Rock	1941	1971
Coal	73	79	Lime	1971	2028
Slate	79	80	Sand - Princeton?	2028	2054
Sand	80	87	Slate	2054	2211
Coal	87	91	Sand (Ravenscliffe)	2211	2257
Slate	91	93	Total Depth		2257
Sand	93	114			
Gritty Lime	114	175	Pays: 2228-29 2/10 W 2"		
Slate	175	241	2250-57 11/10 M 7" 22# 1,431		
Sand	241	271			
Slate	271	299	CEMENT RECORD:		
Sand	299	304	3-25-48 10 3/4" casing not aquagelled.		
Slate & Sand	304	327			
Sand	327	363	5-6-47 8 5/8" casing ran 26 sacks		
Slate	363	367	aquagelled- no circulation or returns.		
Sand	367	428	C.C.Crew.		
Lime	428	448			
Slate & Lime	448	465			
Slate	465	490			
Sand	490	493			
Lime	493	507			
Coal	507	510			
Slate	510	514			
Sand	514	567			
Slate	567	613			
Lime	613	625			
Slate	625	687			
Sand and Slate	687	843			
Sand	843	935			
Slate	935	1004			
Sand	1004	1041			
Slate & Sand	1041	1053			
Slate	1053	1075			
Sand	1075	1101			
Slate & Shells	1101	1127			
Lime and Sand	1127	1241			
Sand	1241	1244			
Lime	1244	1300			
Gritty Lime	1300	1364			
Coal	1364	1368			
Slate	1368	1392			
Sand	1392	1485			
Sand	1485	1512			
Sand	1512	1522			
Coal	1522	1524			
Slate	1524	1607			