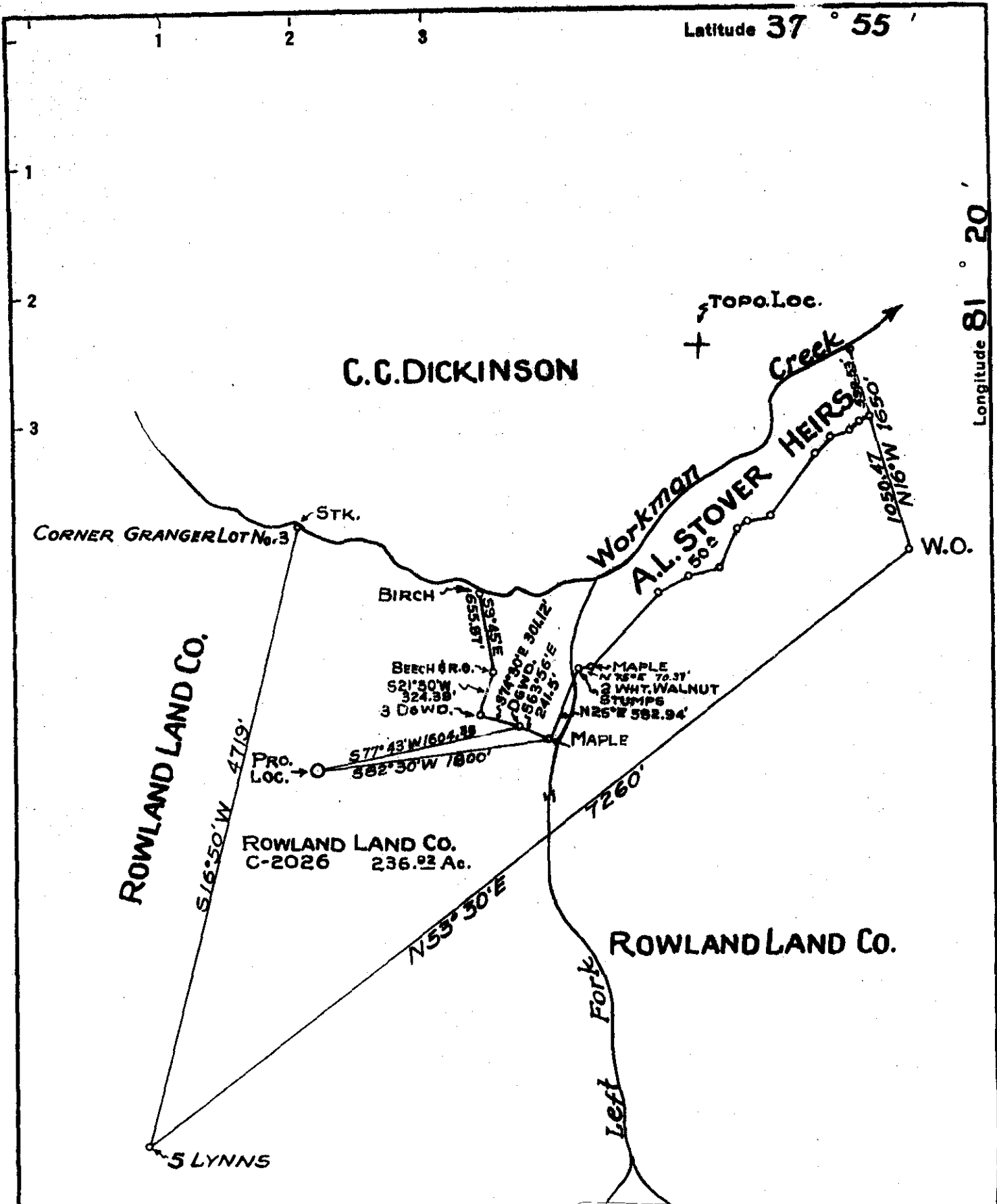


Latitude **37° 55'**

Longitude **81° 20'**



New Location...   
 Drill Deeper...   
 Abandonment...

*issued 11/3/72*

CO: 081 PMT: 182  
 Loc Digitized from OGIS 7.5' Mylar  
 QUAD: 537 DATE: 12-JUN-90  
 LAT: 37 55.0 Miles South: 2.56  
 LONG: 81 20.0 Miles West : 2.19

STATE OF WEST VIRGINIA  
 DEPARTMENT OF MINES  
 OIL AND GAS DIVISION  
 CHARLESTON

WELL LOCATION MAP  
 FILE NO. RAL-182-P

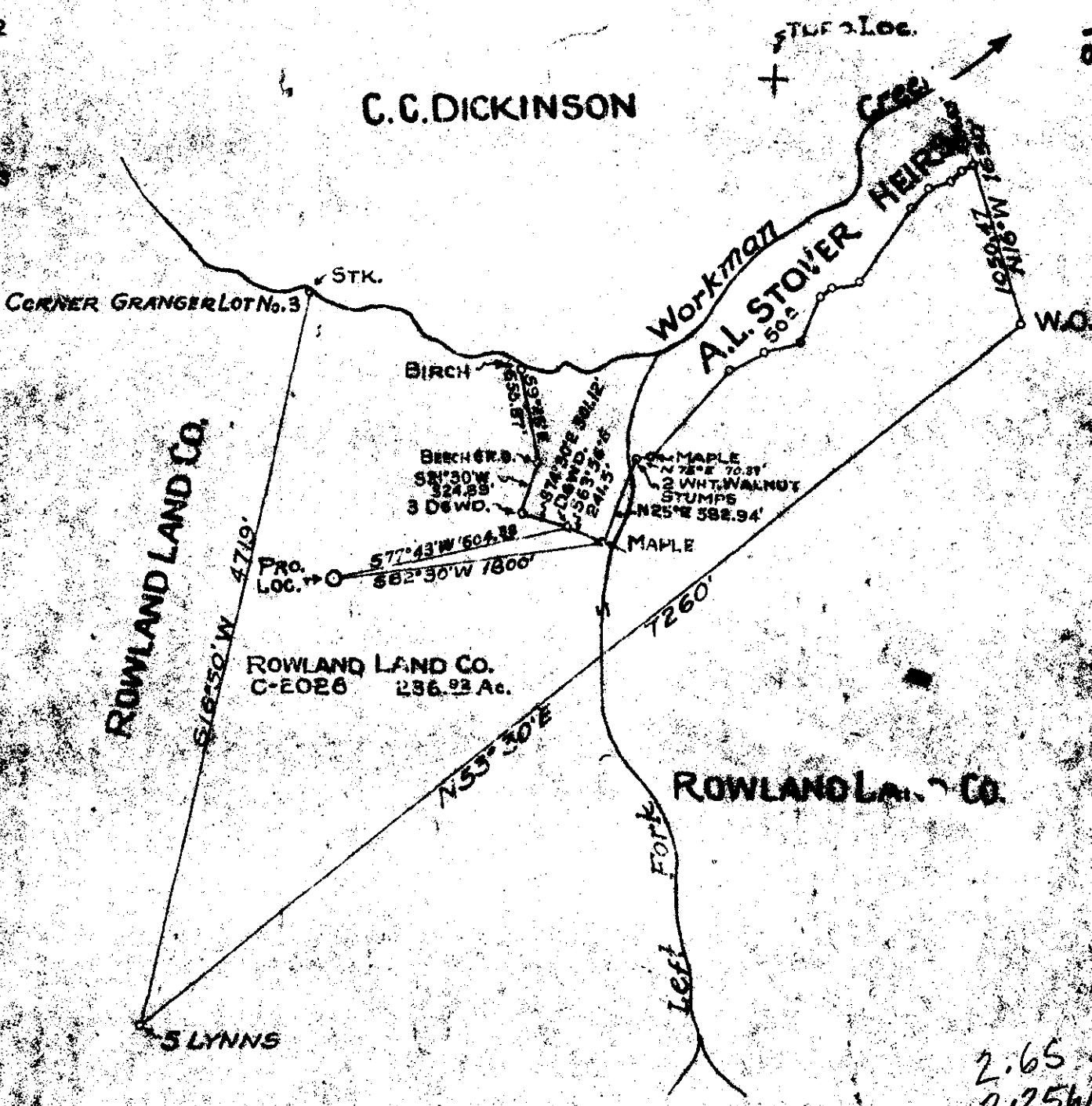
+ Denotes location of well on United States Topographic Maps, scale 1 to 62,500, latitude and longitude lines being represented by border lines as shown.

- Denotes one inch spaces on border line of original tracing.

Company ~~COLUMBIAN CARBON COMPANY~~  
 Address BOX 873 CHARLESTON W.VA., 25323  
 Farm ROWLAND LAND COMPANY  
 Tract Part of 574 Acres 236.92 Lease No. C-2026  
FORMERLY TR. 228  
 Well (Farm) No. 28 Serial No. GW-1161  
 Elevation (Spirit Level) 1932.47'  
 Quadrangle ECCLES 5 S260 W225C  
 County RALEIGH District CLEAR FORK  
 Engineer H. R. ...  
 Engineer's Registration No. 2074  
 File No. \_\_\_\_\_ Drawing No. W-1-51  
 Date JAN. 18 1951 Scale 1" = 1000'

Latitude 38° 55'

Longitude 81° 20'



2.65  
2.25W

New Location   
 Drill Deeper   
 Abandonment

Company	COLUMBIAN CARBON COMPANY
Address	BOX 873 CHARLESTON W.VA.
Farm	ROWLAND LAND COMPANY
Tract No.	226.92
Lease No.	C-2026
Well (Farm) No.	28
Serial No.	GW-1161
Elevation (Spirit Level)	1932.47'
Quadrangle	ECCLES 5 S 260 W 225
County	RALEIGH
District	CLEAR FORK
Engineer	<i>A. P. Anderson</i>
Engineer's Registration No.	2074
File No.	
Drawing No.	W-1-51
Date	JAN 13 1951
Scale	1" = 1000'

STATE OF WEST VIRGINIA  
 DEPARTMENT OF MINES  
 OIL AND GAS DIVISION  
 CHARLESTON

WELL LOCATION MAP  
 FILE NO. RAL-122

+ Denotes location of well on United States Topographic Map, scale 1" = 62,500', latitude and longitude lines being represented by border lines as shown.

- Denotes site with a cross on border line of original tracing.

5-5-240



STATE OF WEST VIRGINIA  
DEPARTMENT OF MINES  
OIL AND GAS DIVISION

WELL RECORD

Permit No. RAI-182

Oil or Gas Well Gas  
(KIND)

Company Columbian Carbon Company  
Address Box 873, Charleston 23, W. Va.  
Farm Rowland Land Company Acres 49.427.2  
Location (waters) Left Fork  
Well No. 28 (GW-1161) Elev. 1932.47'0  
District Clear Fork County Raleigh  
The surface of tract is owned in fee by Rowland Land Co.  
Address St. Albans, W. Va.  
Mineral rights are owned by Same

Drilling commenced 2-5-51  
Drilling completed 5-9-51  
Date Shot 8-2-51 From 1123' To 1138'  
With 1078 Colatin  
1007 Atlas Colatin

Open Flow 5 /10ths Water in 2" Inch  
/10ths Merc. in \_\_\_\_\_ Inch  
Volume 94,000 Cu. Ft.  
Rock Pressure 345 lbs. 24 hrs.  
Oil \_\_\_\_\_ bbls., 1st 24 hrs.  
Fresh water 45' 772' feet feet  
Salt water 2308' feet feet

Casing and Tubing	Used in Drilling	Left in Well	Packers
Size			
2 1/4"	18'5"	18'5"	Kind of Packer <u>Hook-wall Anchor</u>
10 3/4" 32#	609'9"	609'9"	Size of <u>3" x 10"</u>
8 1/4" 24#	1657'7"	Pulled	Depth set <u>1020'</u>
7" 23#	2512'10"	Pulled	
5 8/16			
8			Perf. top _____
2" 8#	1969'3"	1969'3"	Perf. bottom _____
Liners Used	<u>with 3" cage</u>		Perf. top _____
			Perf. bottom _____

CASING CEMENTED \_\_\_\_\_ SIZE \_\_\_\_\_ No. Ft. \_\_\_\_\_ Date \_\_\_\_\_  
See reverse side

COAL WAS ENCOUNTERED AT None FEET INCHES  
FEET INCHES FEET INCHES  
FEET INCHES FEET INCHES

Formation	Color	Hard or Soft	Top	Bottom	Oil, Gas or Water	Depth Found	Remarks
Surface			0	15			
Sand			15	76	F. Water	45'	hole full
Slate			76	299			
Sand			299	368			
Slate			368	371			
Sand			371	421			
Slate			421	482			
Sand			482	506			
Slate			506	529			
Sand			529	573			
Slate			573	592			
Line		608'DLM-607'SLM	592	611			
Slate			611	632			
Sand			632	893	F. Water	772'	1-10" blr/hr.
Slate			893	909	Gas	897'	Show
Sand			909	952			
Sand			952	963			
Sand			963	1222	Gas	1128-32'	4/10 W.2" 8L M
Slate			1222	1277			
Red Rock			1277	1302			
Sand			1302	1339			
Red Rock			1339	1400			
Slate and Shells			1400	1618			
Line			1618	1655			
Red Rock		1645'DLM-1647'SLM	1655	1922	Gas	1929-38'	16/10 W.1" 42,160 cu. ft.
Sand			1922	1958			
Red Rock			1958	2127			
Line			2127	2192			
Sand			2192	2300	Gas	2304-13'	8/10 M.2" 4LON
Line			2300	2382	S. Water	2308'	1 blr/hr.
Slate			2382	2422			
Line B.?		2413'DLM-2422'SLM	2422	2746			
Injun Sand		2498'DLM-2498'SLM	2746	2820			
Blue Line			2820	2865			
Slate and Shells			2865	2892			
Sand			2892	2937			
Slate and Shells			2937	3014			

Formation	Color	Hard or Soft	Top	Bottom	Oil, Gas or Water	Depth Found	Remarks
Sand Slate & shells			3044 3042	3042 3150	Gas Payst 1128-32' 1929-38'	4/10 ".2" 16/10 ".1"	84M 42,160 cu.ft.
			TOTAL DEPTH - - - - 3150'				
			PLUGGED BACK TO 1962'				
<u>CASING RECORD:</u>							
2-22-51	10-3/4"	casing. Not aquagelled.			Columbian Carbon Company Crew		
3-21-51	8-5/8"	casing. Not aquagelled.			Columbian Carbon Company Crew		
4-19-51	7"	casing. Ran 10 bags of Aquagel.			Columbian Carbon Company Crew		

July 20, 1951

Date \_\_\_\_\_, 19\_\_\_\_  
Columbian Carbon Company

APPROVED \_\_\_\_\_, Owner  
O. W. Van Petten, Vice President

By \_\_\_\_\_ (Title)