

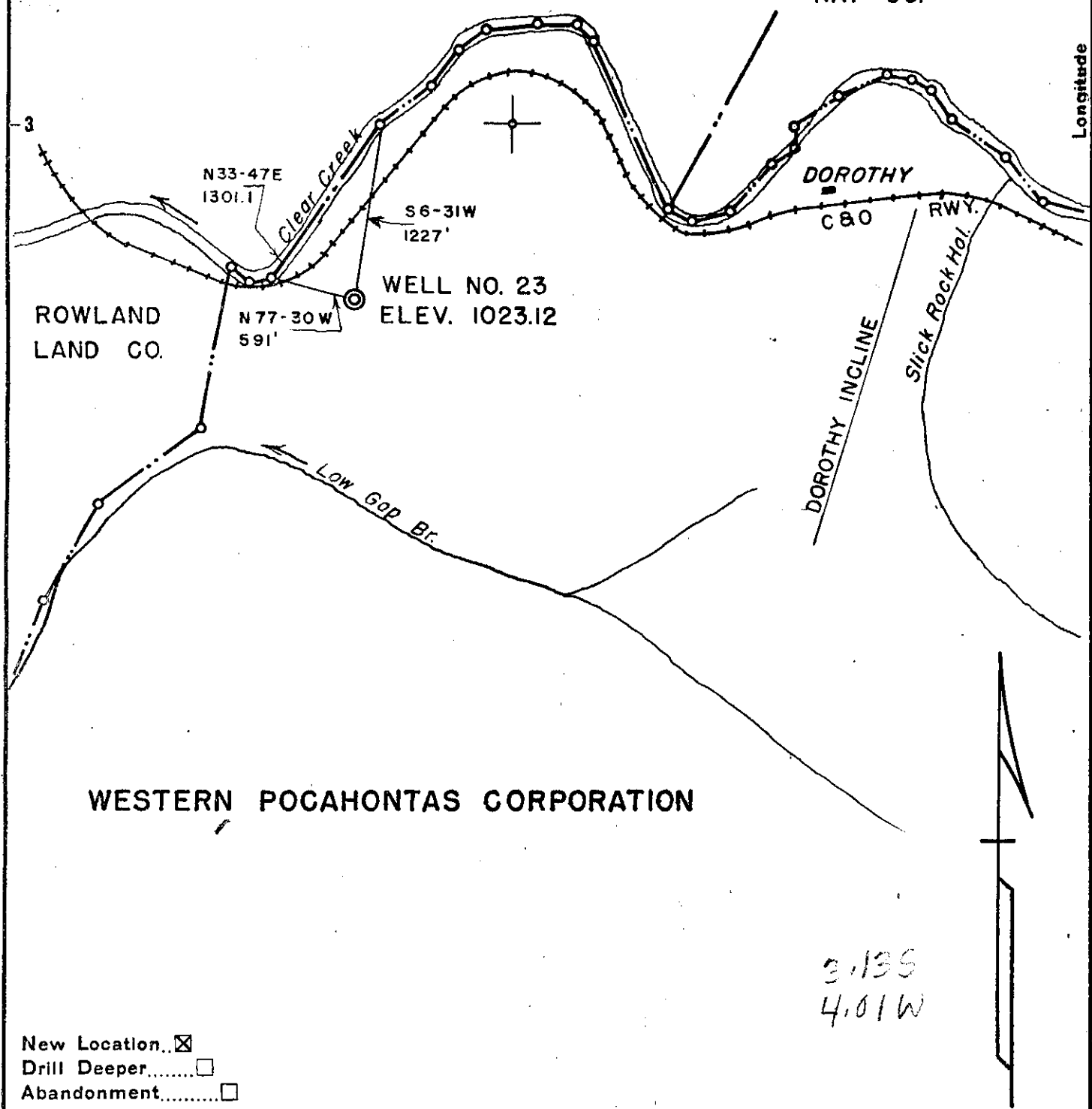
MA

Latitude 38 00

# COAL RIVER MINING & LUMBER CO.

CO: 081 PMT: 205  
Loc Disitized from OGIS 7.5' Mylar  
QUAD: 325 DATE: 9-FEB-90  
LAT: 37 57.5 Miles South: 0.28  
LONG: 81 27.5 Miles West : 1.77

Longitude 81° 25'



## WESTERN POCAHONTAS CORPORATION

3,135  
4,01W

New Location..   
Drill Deeper.....   
Abandonment.....

Company	WESTERN POCAHONTAS CORP.
Address	BOX 509, HUNTINGTON, W. VA.
Farm	DOROTHY - SARITA LANDS OF WPC
Tract	1 Acres 8164.02 Lease No.
Well (Farm) No.	1 Serial No. 23
Elevation (Spirit Level)	1023.12
Quadrangle	ECCLES NW
County	RALEIGH District CLEAR FORK
Engineer	<i>W. E. Hoover</i>
Engineer's Registration No.	881
File No.	Drawing No. 123
Date	AUG. 30, 1954 Scale 1" = 1000'

STATE OF WEST VIRGINIA  
DEPARTMENT OF MINES  
OIL AND GAS DIVISION  
CHARLESTON

### WELL LOCATION MAP FILE NO. RAL-205

+ Denotes location of well on United States Topographic Maps, scale 1 to 62,500, latitude and longitude lines being represented by border lines as shown.  
- Denotes one inch spaces on border line of original tracing.

5-0 247

STATE OF WEST VIRGINIA  
DEPARTMENT OF MINES  
OIL AND GAS DIVISION 5

*Eccles*

WELL RECORD

Permit No. RAL-205

Oil or Gas Well DRY  
(Kind)

Company Western Pocahontas Corporation  
Address Box #509, Huntington, W. Va.  
Farm Dorothy Sarita Lands Acres 8164.02  
Location (waters) Clear Fork of Coal River  
Well No. 23 Elev. 1023.12  
District Clear Fork County Raleigh  
The surface of tract is owned in fee by Western Pocahontas Corp. Box #509 Address Huntington, W. Va.  
Mineral rights are owned by Western Poca. Corporation Box #509 Address Huntington, W. Va.  
Drilling commenced 10-22-54  
Drilling completed 1-25-55  
Date shot \_\_\_\_\_ Depth of shot \_\_\_\_\_  
Open Flow /10ths Water in \_\_\_\_\_ Inch  
/10ths Merc. in \_\_\_\_\_ Inch  
Volume \_\_\_\_\_ Cu. Ft.  
Rock Pressure \_\_\_\_\_ lbs \_\_\_\_\_ hrs.  
Oil \_\_\_\_\_ bbls., 1st 24 hrs.  
Fresh water \_\_\_\_\_ feet \_\_\_\_\_ feet  
Salt water \_\_\_\_\_ feet \_\_\_\_\_ feet

Casing and Tubing	Used in Drilling	Left in Well	Packers
Size			Kind of Packer
16			
13	40'	40'	
10	469'	469'	Size of
8 1/4	1250'	Pulled	
6 3/4	2054'	2054'	Depth set
5 3/16			
3			Perf. top
2			Perf. bottom
Liners Used			Perf. top
			Perf. bottom

CASING CEMENTED \_\_\_\_\_ SIZE \_\_\_\_\_ No. Ft. \_\_\_\_\_ Date \_\_\_\_\_  
COAL WAS ENCOUNTERED AT 72 FEET 48 INCHES  
190 FEET 24 INCHES 586 FEET 12 INCHES  
1037 FEET 36 INCHES \_\_\_\_\_ FEET \_\_\_\_\_ INCHES

Formation	Color	Hard or Soft	Top	Bottom	Oil, Gas or Water	Depth Found	Remarks
Surface			00	28 -	Water @ 60'	- 1 bbl. per hour	
Slate			28	72			
Coal			72	76			
Sand			76	100			
Slate			100	190			
Coal			190	192			
Gritty Lime			192	245			
Sand			245	313			
Slate			313	350			
Sand			350	410			
Slate			410	420			
Sand			420	586			
Coal			586	587			
Slate			587	608			
Sand			608	630			
Lime			630	702			
Sand			702	1032			
Slate			1032	1037			
Coal			1037	1040			
Lime			1040	1064			
Gritty Lime			1064	1160			
Sand			1160	1285			
Slate			1285	1328			
Sand			1328	1360			
Lime			1360	1421			
Red Rock			1421	1575			
Slate and Shell			1575	1700			
Lime			1700	1810			
Slate and Shell			1810	1850			
Sand			1850	1878			
Slate			1878	1912			
Lime			1912	1997			
Big Lime			1997	2328			
Injun			2328	2371			
Gritty Lime			2371	2435			



Formation	Color	Hard or Soft	Top <sup>5</sup>	Bottom	Oil, Gas or Water	Depth Found	Remarks
Slate and Shell Weir			2435	2548			
Slate and Shell			2548	2630			
Brown Slate			2630	2773			
Berea			2773	2783			
Slate			2783	2802			
Lime			2802	2807			
			2807	2836			
TOTAL DEPTH						2836	
Show of Gas in Big Lime -		2098'					
		2183'					
		2240'					
		2265'					

Date January 26, 1955

APPROVED Western Pocahontas Corporation, Owner

By.....