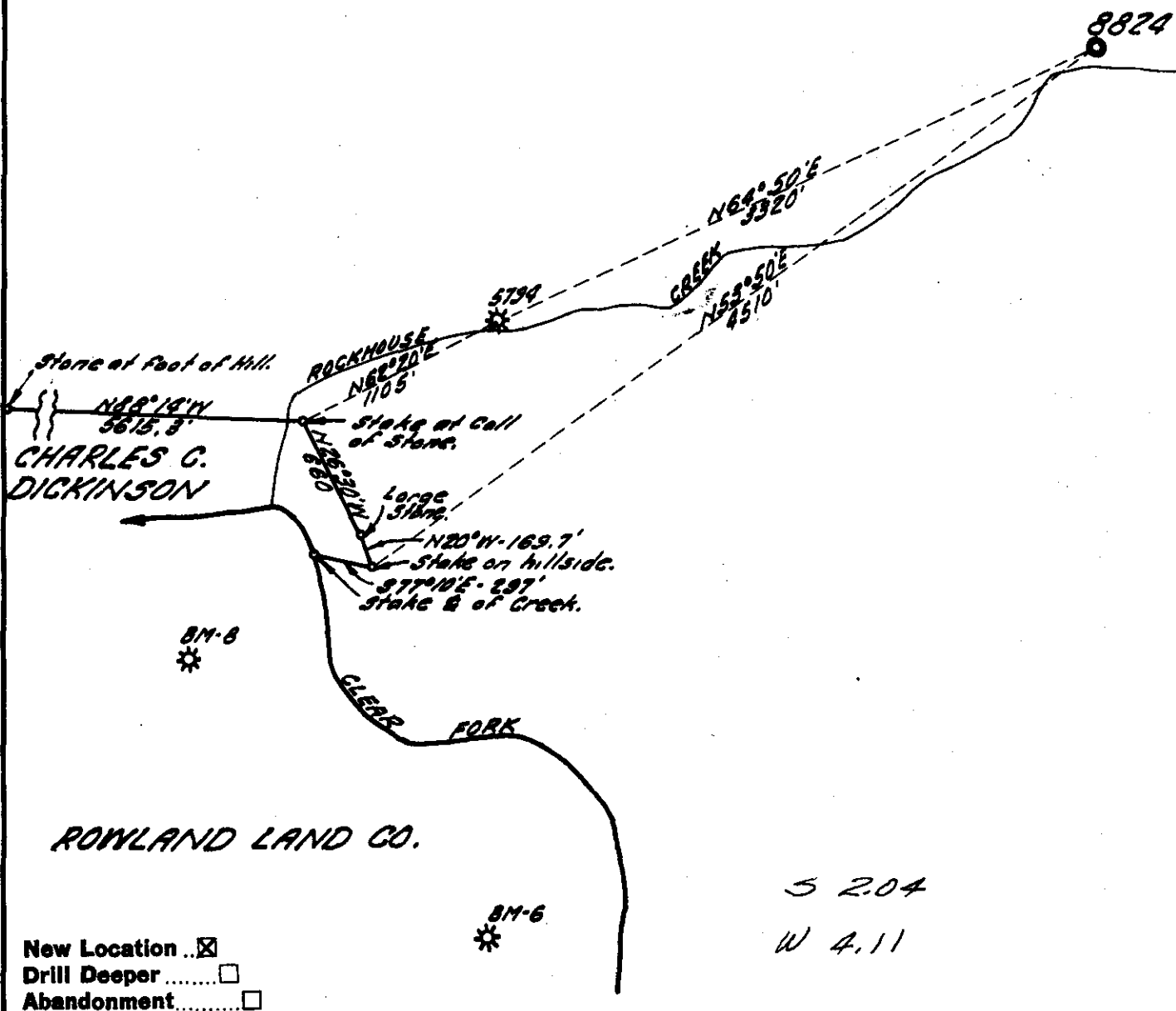


Latitude 38° 00'

CO: 081 PMT: 251  
Loc Disitized from OGIS 7.5' Mylar  
QUAD: 325 DATE: 9-FEB-90  
LAT: 38 00.0 Miles South: 2.03  
LONG: 81 27.5 Miles West : 1.76

COAL RIVER MINING & LUMBER CO.



S 2.04  
W 4.11

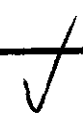
Company UNITED FUEL GAS CO.  
 Address CHARLESTON, W.VA.  
 Farm COAL RIVER MINING & LUMBER CO.  
 Tract \_\_\_\_\_ Acres 2404 Lease No. 28129  
 Well (Farm) No. #1 Serial No. 8824  
 Elevation (Spirit Level) 1061.91'  
 Quadrangle ECCLES NW  
 County RALEIGH District CLEAR FORK  
 Engineer Byrd H. Sherrill  
 Engineer's Registration No. 2529  
 File No. 68-33 Drawing No. \_\_\_\_\_  
 Date JUNE 20, 1961 Scale 1" = 800'

STATE OF WEST VIRGINIA  
DEPARTMENT OF MINES  
OIL AND GAS DIVISION  
CHARLESTON

WELL LOCATION MAP  
FILE NO. RAW-251

+ Denotes location of well on United States Topographic Maps, scale 1 to 62,500, latitude and longitude lines being represented by border lines as shown.

- Denotes one inch spaces on border line of original tracing.





STATE OF WEST VIRGINIA  
DEPARTMENT OF MINES  
OIL AND GAS DIVISION /4

Quadrangle Eccles

WELL RECORD

Permit No. RAL-251

Oil or Gas Well Dry Hole  
(KIND)

Company United Fuel Gas Company  
Address P. O. Box 1273; Charleston 25, W. Va.  
Farm Coal River Mining & Lumber Co Acres 2,404  
Location (waters) Rockhouse Creek  
Well No. 8824-P.I. Elev. 1061.91  
District Clear Fork County Raleigh  
The surface of tract is owned in fee by \_\_\_\_\_  
Address \_\_\_\_\_

Mineral rights are owned by Coal River Mining & Lumber Co, et al  
c/o D.L. Sloan, Treas. Address Cumberland, Maryland

Drilling commenced 9-18-61  
Drilling completed 12-7-61  
Date Shot \_\_\_\_\_ From \_\_\_\_\_ To \_\_\_\_\_  
With \_\_\_\_\_

Open Flow /10ths Water in \_\_\_\_\_ Inch  
/10ths Merc. in \_\_\_\_\_ Inch

Volume Dry Hole - Plugged & Abandoned cu. Ft.

Rock Pressure \_\_\_\_\_ lbs. \_\_\_\_\_ hrs.

Oil \_\_\_\_\_ bbls., 1st 24 hrs.

WELL ACIDIZED \_\_\_\_\_

WELL FRACTURED \_\_\_\_\_

RESULT AFTER TREATMENT \_\_\_\_\_

ROCK PRESSURE AFTER TREATMENT \_\_\_\_\_

Fresh Water 75' Feet 915-920'; 938' Salt Water \_\_\_\_\_ Feet

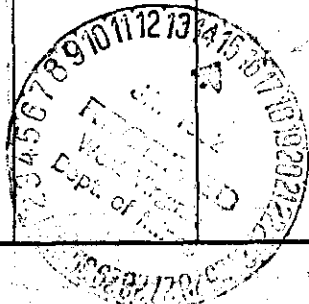
Casing and Tubing	Used in Drilling	Left in Well	Packers
Size			Kind of Packer
16			
18 3/8	Abd. in hole	15'	
10 3/4	Abd. in hole	452'	Size of
8 5/8	1521'	Pulled	
			Depth set
3			Perf. top
2			Perf. bottom
Liners Used			Perf. top
			Perf. bottom

CASING CEMENTED \_\_\_\_\_ SIZE \_\_\_\_\_ No. Ft. \_\_\_\_\_ Date \_\_\_\_\_

COAL WAS ENCOUNTERED AT \_\_\_\_\_ FEET \_\_\_\_\_ INCHES  
\_\_\_\_\_ FEET \_\_\_\_\_ INCHES \_\_\_\_\_ FEET \_\_\_\_\_ INCHES  
\_\_\_\_\_ FEET \_\_\_\_\_ INCHES \_\_\_\_\_ FEET \_\_\_\_\_ INCHES

Formation	Color	Hard or Soft	Top	Bottom	Oil, Gas or Water	Depth	Remarks
Gravel			0	15	Water 75' 4	bailers per hour	
Sand			15	85			
Slate			85	98	Water 915-920'	2 1/2 bailers per hour	
Sand			98	142			
Slate			142	181	Hole full water	938'	
Sand			181	220			
Slate			220	223	Gas 1010-1013'	10/10 W 1" 33 M	
Sand			223	284			
Slate & Shells			284	354	Show gas 2298-2302'		
Sand			354	428			
Slate			428	452	DRY HOLE - PLUGGED AND ABANDONED.		
Sand			452	583			
Slate			583	586	"		
Sand			586	655	LOGS RUN:		
Slate & Shells			655	765	Gamma Ray		
Sand <u>Salt?</u>			765	1123	G. G. Density		
Lime			1123	1142	Induc tion		
Slate & Shells			1142	1200	Temperature		
Sand			1200	1241			
Slate			1241	1264			
Sand			1264	1360			
Lime			1360	1375			
Slate & Shells			1375	1415			
Lime & Shells			1415	1479			
Slate			1479	1485			
Red Rock			1485	1509			
Lime Shells			1509	1519			
Red Rock			1519	1626			
Slate & Shells			1626	1687			
Lime			1687	1719			

(over)



Formation	Color	Hard or Soft	Top / 4	Bottom	Oil, Gas or Water	Depth Found	Remarks
Red Rock			1719	1751			
Slate			1751	1758			
Red Rock			1758	1812			
Slate & Shells			1812	1837			
Lime			1837	1906			
Sand			1906	1933			
Slate			1933	1985			
Pencil Cave			1985	1999			
Big Lime		6 br?	1999	2330			
Injun Sand			2330	2340			
Slate & Shells			2340	2466			
Weir Sand			2466	2495			
Slate & Shells			2495	2677			
Total Depth			2677'				

Date January 12, 1962

APPROVED UNITED FUEL GAS COMPANY, Owner

By S. R. General  
(Title)

Supt., Civil Engineering Dept.