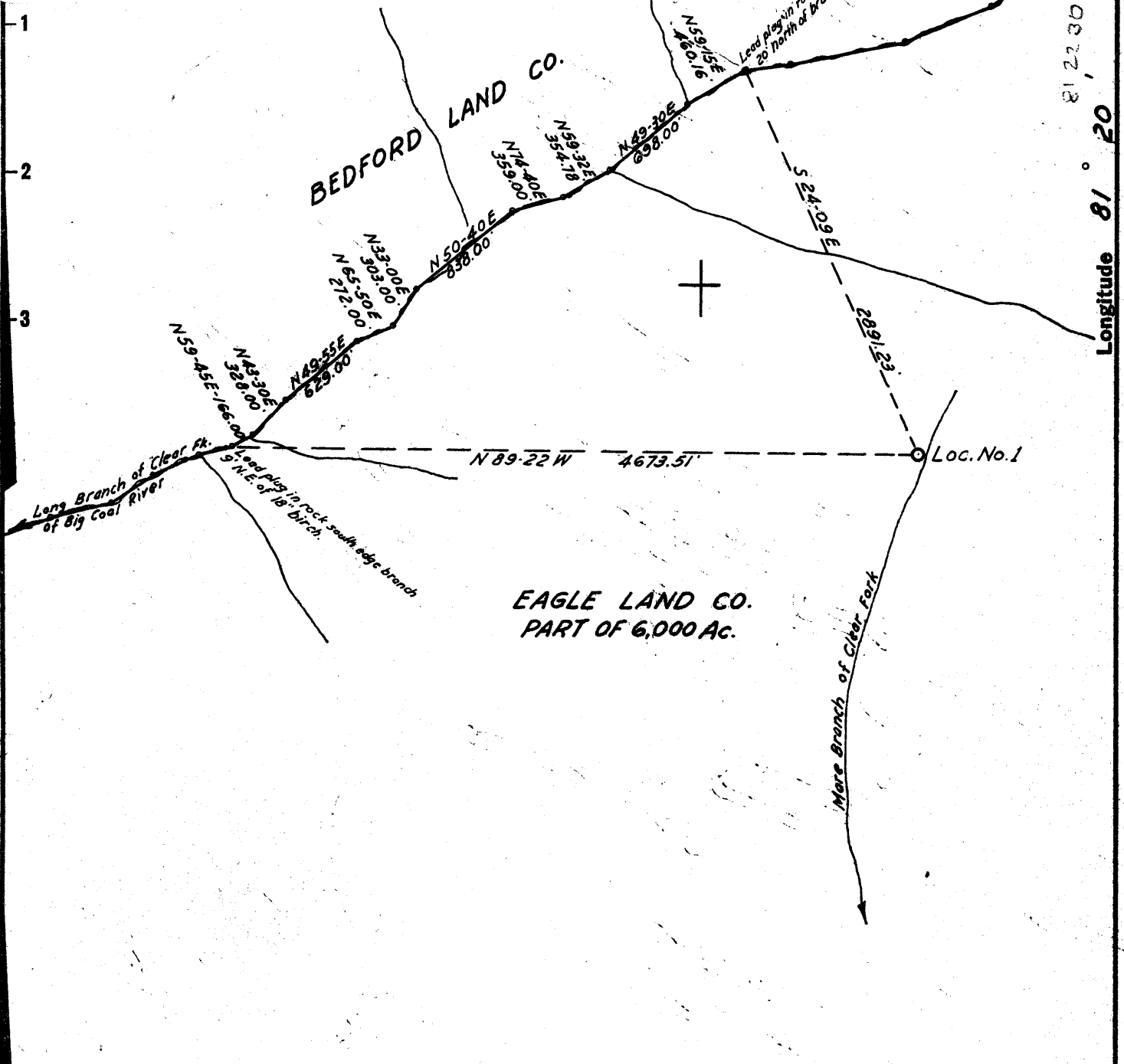


CO: 081 PMT: 254
 Loc Disitized from OGIS 7.5' Mylar
 QUAD: 325 DATE: 9-FEB-90
 LAT: 37 57.5 Miles South: 0.20
 LONG: 81 22.5 Miles West : 0.77

Latitude $38^{\circ} 00'$
 375730



Location No. 1 is on stripped area of Eagle coal seam.

corrected 10/26

3.08 S
 3.04 W

2.9 S
 2.81 W

New Location
 Drill Deeper
 Abandonment

Raleigh Eagle Coal Co. coordinates - Loc. No. 1:
 N-1,863.68 E-7,077.50

Company	UNITED PRODUCING CO., INC.
Address	CHARLESTON, W. VA.
Farm	EAGLE LAND CO.
Tract	Acres 6,000 Lease No. 9966
Well (Farm) No.	1 Serial No. 3356
Elevation (Spirit Level)	1786.0
Quadrangle	ECCLES NC
County	RALEIGH District CLEAR FORK
Engineer	John H. Burnett
Engineer's Registration No.	1442
File No.	19-A Drawing No.
Date	OCT. 9, 1961 Scale 1"=1,000'

STATE OF WEST VIRGINIA
 DEPARTMENT OF MINES
 OIL AND GAS DIVISION
 CHARLESTON

WELL LOCATION MAP

FILE NO. RAL-254

+ Denotes location of well on United States Topographic Maps, scale 1 to 62,500, latitude and longitude lines being represented by border lines as shown.

- Denotes one inch spaces on border line of original tracing.



STATE OF WEST VIRGINIA
DEPARTMENT OF MINES
OIL AND GAS DIVISION

Quadrangle Eccles

Permit No. RAL-254

WELL RECORD

Oil or Gas Well Gas
(KIND)

Company United Producing Company, Inc;
Address Box 1913, Charleston 27, West Virginia
Farm Eagle Land Company Acres 6,000

Location (waters) Mare Branch of Clear Fork
Well No. 1 (3356) Elev. 1795' KB
District Clear Fork County Raleigh

The surface of tract is owned in fee by Eagle Land Company
1310 Kanawha Valley Bldg., Charleston 1, W. Va.

Mineral rights are owned by Same
Address _____

Drilling commenced October 10, 1961
Drilling completed October 22, 1961

Date Shot _____ From _____ To _____
With _____

Open Flow _____ /10ths Water in _____ Inch
_____ /10ths Merc. in _____ Inch

Volume _____ Cu. Ft.

Rock Pressure _____ lbs. _____ hrs.

Oil _____ bbls., 1st 24 hrs.

WELL ACIDIZED _____

Casing and Tubing	Used in Drilling	Left in Well	Packers
Size			Kind of Packer
16"	12'	12'	
13 3/8"	28'	28'	
10			Size of
8 5/8"	1850'	1850'	
6 5/8"			Depth set
5 3/16" 4 1/2"	2942'	2942'	4 1/2"
3			Perf. top 2838'
2			Perf. bottom 2860'
Liners Used			Perf. top
			Perf. bottom
CEMENTED 16" with 1 1/2" sx.			
13 3/8" 48 sx.			
CASING CEMENTED 8 5/8" SIZE 50 SX No. Ft. _____ Date _____			
4 1/2" 175 sx.			

COAL WAS ENCOUNTERED AT 108 FEET 24 INCHES
____ FEET _____ INCHES FEET _____ INCHES
____ FEET _____ INCHES FEET _____ INCHES

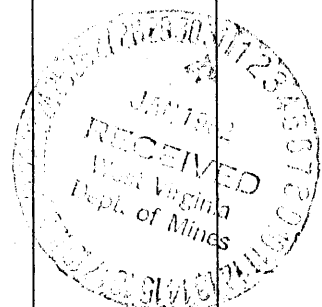
WELL FRACTURED 10-30-61 with 500 gals. mud acid, 508 bbls. treated water and 54,000 lbs. sand.

RESULT AFTER TREATMENT 48/10 W 1" - 73,000 cu. ft.

ROCK PRESSURE AFTER TREATMENT _____

Fresh Water 110 Feet Salt Water _____ Feet

Formation	Color	Hard or Soft	Top	Bottom	Oil, Gas or Water	Depth	Remarks
Sand			42	108			
Coal			108	110	Water	110'	
Sand			110	155			
Shale & Sand			155	195			
Sand			195	290			
Shale & Sand			290	465			
Shale			465	510			
Sand			510	795			
Shale			795	835			
Salt Sand			835	1310			
Sand & Shale			1310	1445			
Red Rock			1445	1465			
Sand & Shale			1465	1580			
Shale			1580	1675			
Ravencliff Sand			1675	1710			
Red Rock, Shale & Sandy Lime			1710	2230			
Sand			2230	2265			
Shale			2265	2300			
Little Lime			2300	2350			
Shale			2350	2385			
Big Lime			2385	2675	Gas	2565'	Show
Injun Sand			2675	2690			
Lime & Shale			2690	2730			
Silt Sand			2730	2740			
Weir Sand			2740	2815			
Shale			2815	2833			
Weir Sand			2833	2886	Gas	2865'	73MCF
Shale			2886	3205			
Berea Sand			3205	3242			
Shale			3242	3283			



TOTAL DEPTH (over) 3283'