

WW-7
8-30-06



West Virginia Department of Environmental Protection
Office of Oil and Gas
WELL LOCATION FORM: GPS

API: 47-081-00416 WELL NO.: Western Pocahontas #8

FARM NAME: Western Pocahontas

RESPONSIBLE PARTY NAME: Steve Duckworth Well Service

COUNTY: Raleigh DISTRICT: Town

QUADRANGLE: Oak Hill 7.5'

SURFACE OWNER: Helen Crafton

ROYALTY OWNER: Western Pocahontas Corp.

UTM GPS NORTHING: 4193132.7

UTM GPS EASTING: 478732.1 GPS ELEVATION: 645.7m (2118')

The Responsible Party named above has chosen to submit GPS coordinates in lieu of preparing a new well location plat for a plugging permit or assigned API number on the above well. The Office of Oil and Gas will not accept GPS coordinates that do not meet the following requirements:

- Datum: NAD 1983, Zone: 17 North, Coordinate Units: meters, Altitude: height above mean sea level (MSL) – meters.
- Accuracy to Datum – 3.05 meters
- Data Collection Method:

Survey grade GPS : Post Processed Differential
 Real-Time Differential
 Mapping Grade GPS : Post Processed Differential
 Real-Time Differential

4. Letter size copy of the topography map showing the well location.

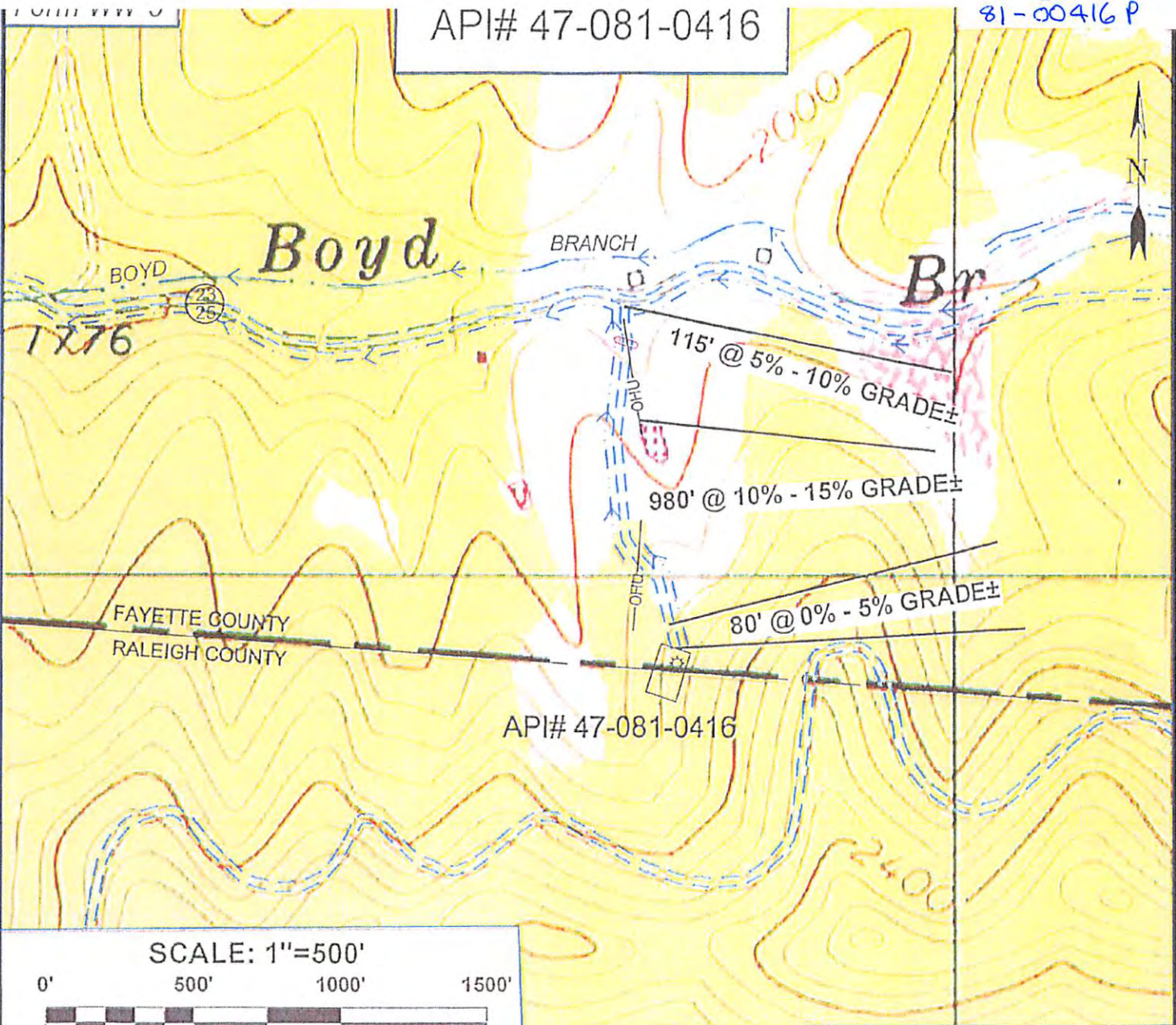
I the undersigned, hereby certify this data is correct to the best of my knowledge and belief and shows all the information required by law and the regulations issued and prescribed by the Office of Oil and Gas.

Matthew J. Hill Project Manager 12-13-2017
 Signature Title Date

RECEIVED
 Office of Oil and Gas
 DEC 21 2017
 WV Department of
 Environmental Protection

API# 47-081-0416

81-00416 P



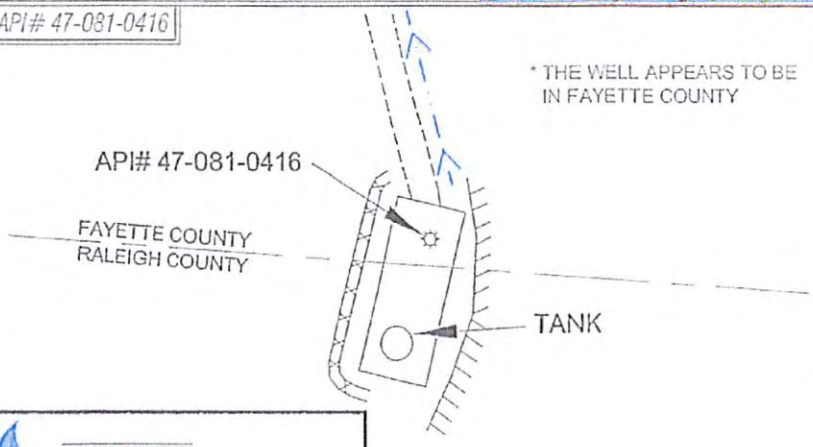
SCALE: 1"=500'



Detail Sketch for API# 47-081-0416



Not To Scale



* THE WELL APPEARS TO BE IN FAYETTE COUNTY

API# 47-081-0416

FAYETTE COUNTY
RALEIGH COUNTY

TANK

ALL ROADS SHOWN HEREON ARE EXISTING UNLESS OTHERWISE NOTED AND SHALL BE MAINTAINED IN ACCORDANCE WITH WV D.E.P. OIL AND GAS BMP MANUAL ENTRANCES AT COUNTY/STATE ROADS SHALL BE MAINTAINED IN ACCORDANCE WITH WV D.O.T. REGULATION. SEPARATE PERMITS MAY BE REQUIRED BY THE D.O.T.

SEDIMENT BASINS (TRAPS) AND APPROPRIATE EROSION CONTROL BARRIERS ARE TO BE CONSTRUCTED AT ALL CULVERT AND CROSS DRAIN INLETS AND OUTLETS AS REQUIRED IN THE WV D.E.P. OIL AND GAS BMP MANUAL. FIELD CONDITIONS (ROCK OUTCROPS AND BEDROCK) MAY PROHIBIT INLET TRAPS BEING INSTALLED. WHEN THESE CONDITIONS EXIST ADDITIONAL EROSION CONTROL MEASURES SHALL BE EVALUATED AND UTILIZED AS NEEDED.

EARTHWORK CONTRACTORS ARE RESPONSIBLE FOR NOTIFICATION TO THE OPERATOR AND INSPECTOR PRIOR TO ANY DEVIATION FROM THIS PLAN

TEMPORARY SEED & MULCH ALL SLOPES AFTER CONSTRUCTION OF LOCATION

- = EXISTING CULVERT
- = PROPOSED CULVERT 15' MIN. UNLESS OTHERWISE NOTED
- = PROPOSED STREAM CROSSING

RECEIVED
Office of Oil and Gas
DEC 21 2017

TOPO SECTIONS OF OAK HILL 7.5' TOPO QUADRANGLE

SLS
Land & Energy Development
Solutions from the ground up.
P.O. Box 150 • Vorhorn Drive • Glenville, WV 26031 • (304) 462-5634
www.slsinc.com

DRAWN BY:	FILE NO.:	DATE:	CADD FILE:
MGF	8761	12-08-17	8761REC.dwg