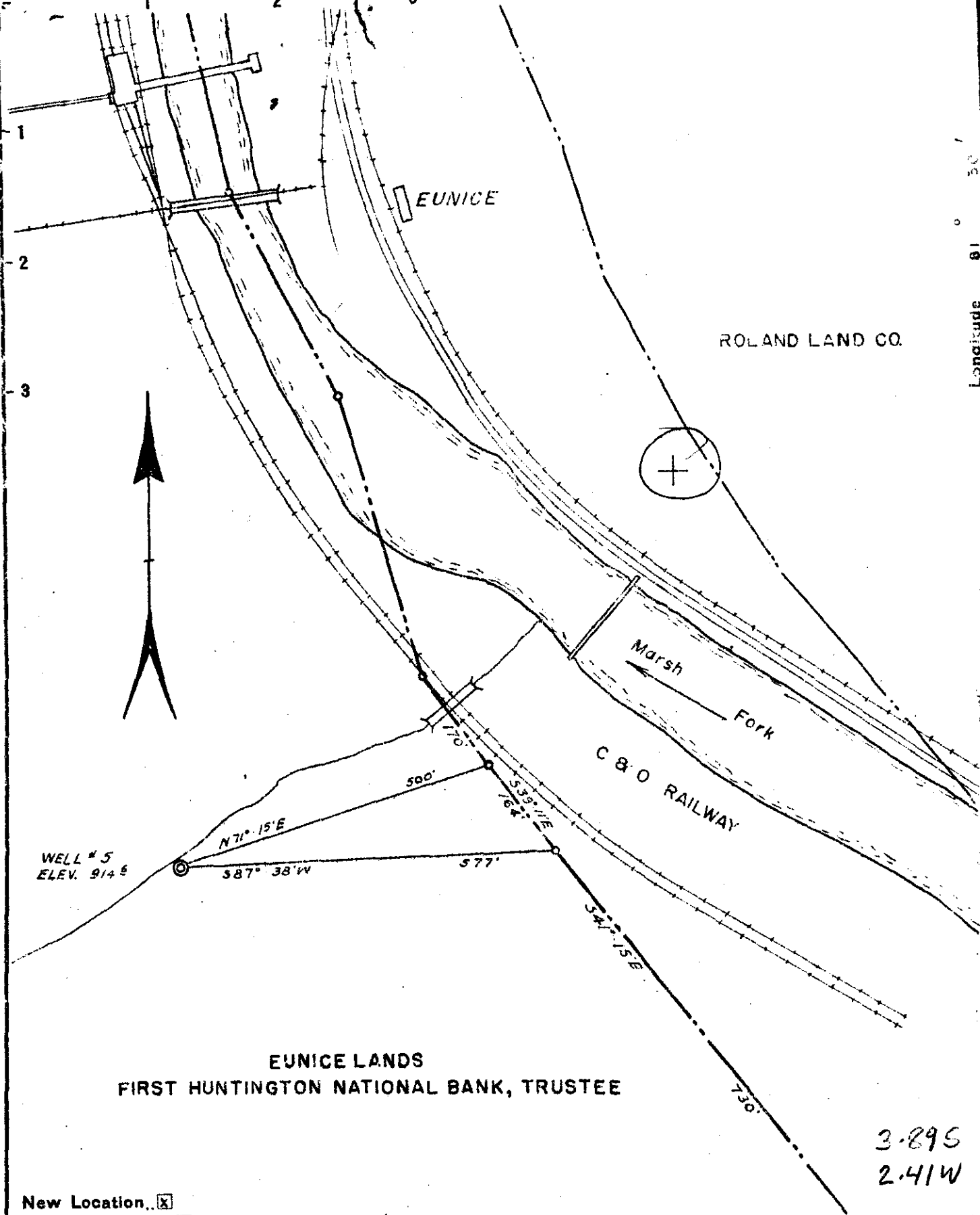


Latitude 38 00

Longitude 81 30



WELL # 5  
ELEV. 914.6

EUNICE LANDS  
FIRST HUNTINGTON NATIONAL BANK, TRUSTEE

3.895  
2.41W

New Location...    
 Drill Deeper.....    
 Abandonment.....

Company WESTERN POCAHONTAS CORP.  
 Address BOX 509, HUNTINGTON, W. VA.  
 Farm EUNICE LANDS  
 Tract 1 Acres 501 Lease No. \_\_\_\_\_  
 Well (Farm) No. 1 Serial No. 5  
 Elevation (Spirit Level) 914.6  
 Quadrangle BALD KNOB  
 County RALEIGH District MARSH FORK  
 Engineer *J. S. Hoover*  
 Engineer's Registration No. 681  
 File No. \_\_\_\_\_ Drawing No. \_\_\_\_\_  
 Date FEB. 28, 1952 Scale 1" = 200'

STATE OF WEST VIRGINIA  
 DEPARTMENT OF MINES  
 OIL AND GAS DIVISION  
 CHARLESTON

**WELL LOCATION MAP**  
 FILE NO. RAL-196W

+ Denotes location of well on United States Topographic Maps, scale 1 to 62,500, latitude and longitude lines being represented by border lines as shown.

- Denotes one inch spaces on border line of original tracing.

6-6 247 ✓

WEST VIRGINIA DEPARTMENT OF MINES  
OIL & GAS DIVISION  
W E L L R E C O R D

Permit No. Bal 196  
Bald Knob Quad.

Gas Well  
CASING & TUBING

Company	Western Pocahontas Corp.			
Address	Box 509, Huntington, W.Va.	10	266	266
Farm	Eunice Acres 501	8	1241	Pld.
Location	Marsh Fork of Coal River	7	2041	2041
Well No.	5 Elev. 914.6	3	2529	2529
District	Marsh Fork Raleigh County			
Surface	Western Pocahontas, Huntington, W.Va.			Anchor Packer
Mineral	" "			Size 3"
Commenced	4-22-52			Depth 2529'
Completed	7-17-52			" 2304
Volume	275,000 C.F.			Big Lime
Rock Pressure	800 lbs. 48 hrs.			

Coal at 186'; 340'

Gravel	0	20
Sand	20	36
Slate	36	80
Sand	80	95
Slate	95	115
Sand	115	145
Slate	145	186
Coal	186	188
Slate	188	250
Gritty Lime	250	270
Slate	270	300
Lime	300	325
Slate	325	340
Coal	340	344
Sand	344	410
Slate	410	418
Sand	418	642
Slate	642	665
Sand	665	693
Slate	693	727
Grampus Sand	727	908
Slate	908	910
Sand <i>Salt??</i>	910	1208
Gritty Lime	1208	1245
Slate	1245	1266
Gritty Lime	1266	1290
Sand	1290	1320
Slate & Shells	1320	1393
Red Rock	1393	1402
Slate	1402	1414
Lime	1414	1463
Red Rock	1463	1494
Lime	1494	1528
Sand	1528	1540
Lime	1540	1616
Red Rock	1616	1640
Lime	1640	1655
Slate	1655	1672
Lime	1672	1720
Red Rock	1720	1780
Lime	1780	1830
Red Rock	1830	1855
Lime/.	1855	1913
Pencil Cavo	1913	1925
Big Lime	1925	2345
Red Lime	2345	2368
Gritty Lime	2368	2409
Weir	2409	2516
Gritty Lime	2516	2535
T.D.	2535	

Hole plugged to 2525'



STATE OF WEST VIRGINIA  
DEPARTMENT OF MINES  
OIL AND GAS DIVISION

County RALEIGH  
Well No. RAI-196

WELL RECORD

Oil or Gas Well Gas

Company Peake Petroleum Co.  
Address 1310 Williamson Bldg. Cleve. 14, Ohio  
Farm W.P.O. Eunice Lands Area 802  
Location (waters) Marsh Fork of Coal River  
Well No. 8 Sec. 214.6  
State Marsh Fork County Raleigh  
The surface of land is owned in fee by Western  
Production Corp. address Huntington, W. Va.  
Mineral rights are owned by Same as above

Casing and Tubing	Used in Drilling	Left in Well	Packers
Size			Kind of Packerc
18			
18			
18	268	268	Size of
24	1241	Pulled	
24	2041	2041	Depth set
2 7/8			
1	2535	2535	Perf. top
2			Perf. bottom
Liners Used			Perf. top
			Perf. bottom

Drilling commenced 4-22-52  
Drilling completed 7-17-52  
Date Shot From To  
Well  
Open Flow /10ths Water in Inch  
/10ths Merc. in Inch  
Volume 275 M Final Cu. Ft.  
Rock Pressure 800 lbs. 48 hrs.  
Oil bbls., 1st 24 hrs.  
WELL ACIDIZED

CASING CEMENTED	SIZE	No. Ft.	Date
COAL WAS ENCOUNTERED AT <u>186</u> FEET <u>24</u> INCHES			
<u>340</u> FEET <u>48</u> INCHES FEET INCHES			
FEET INCHES FEET INCHES			

WELL FRACTURED 2-18-53 with 250 gals. Dow-X, 75 lbs. J-100, 5 gals. detergent, 22,000# 20/40 Sand and 25,200 gals. water  
RESULT AFTER TREATMENT 1,039 MCF  
ROCK PRESSURE AFTER TREATMENT 392# in 16 hrs.  
Fresh Water Feet Salt Water Feet

Formation	Color	Hard or Soft	Top	Bottom	Oil, Gas or Water	Depth	Remarks
Re-worked this well with treatment stated above on Fracture							
Perforations:		2 @ 2285'					
		4 @ 2304-05					
		13 @ 2429-2435					
		17 @ 2491-2502					
Well Logged by Schlumberger:		Gamma Ray-Neutron	- 1541-2541				
		Formation Density	- 2042-2541				
		Induction	- 1541-2541				
		Temperature	- 1700-2541				

