



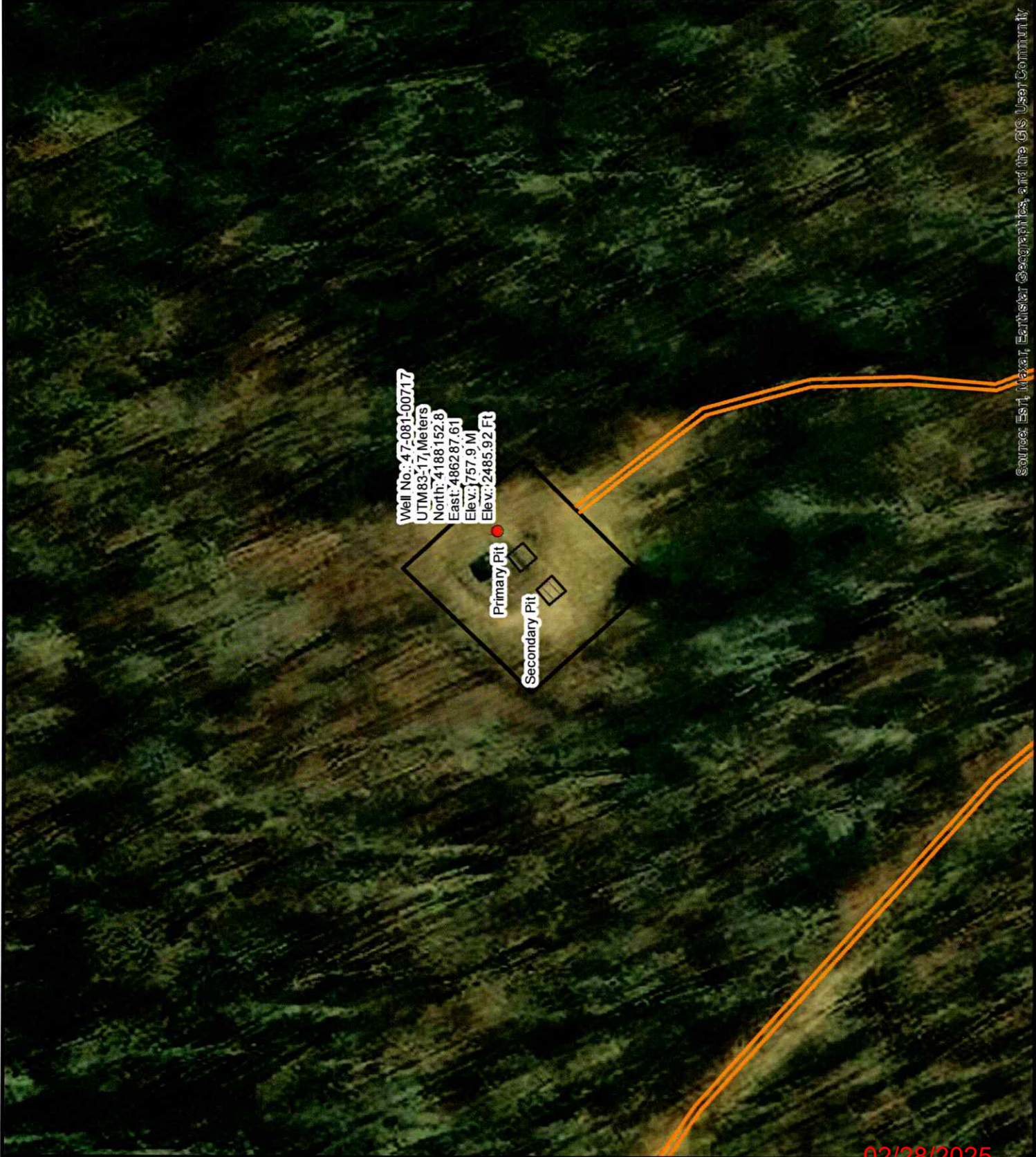
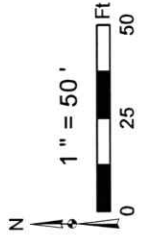
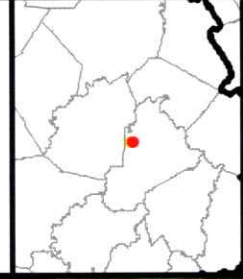
Diversified Gas & Oil  
Corporation  
100 Diversified Way  
Pikeville KY, 41051

47-081-00717

Well Plugging Map

### Legend

- Well
- Access Road
- Pits
- Pad
- Public Roads



Source: Esri, Maxar, Earthstar Geographics, and the GIS User Community

02/28/2025




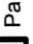



Diversified Gas & Oil Corporation  
100 Diversified Way  
Pikeville KY, 41051

47-081-00717

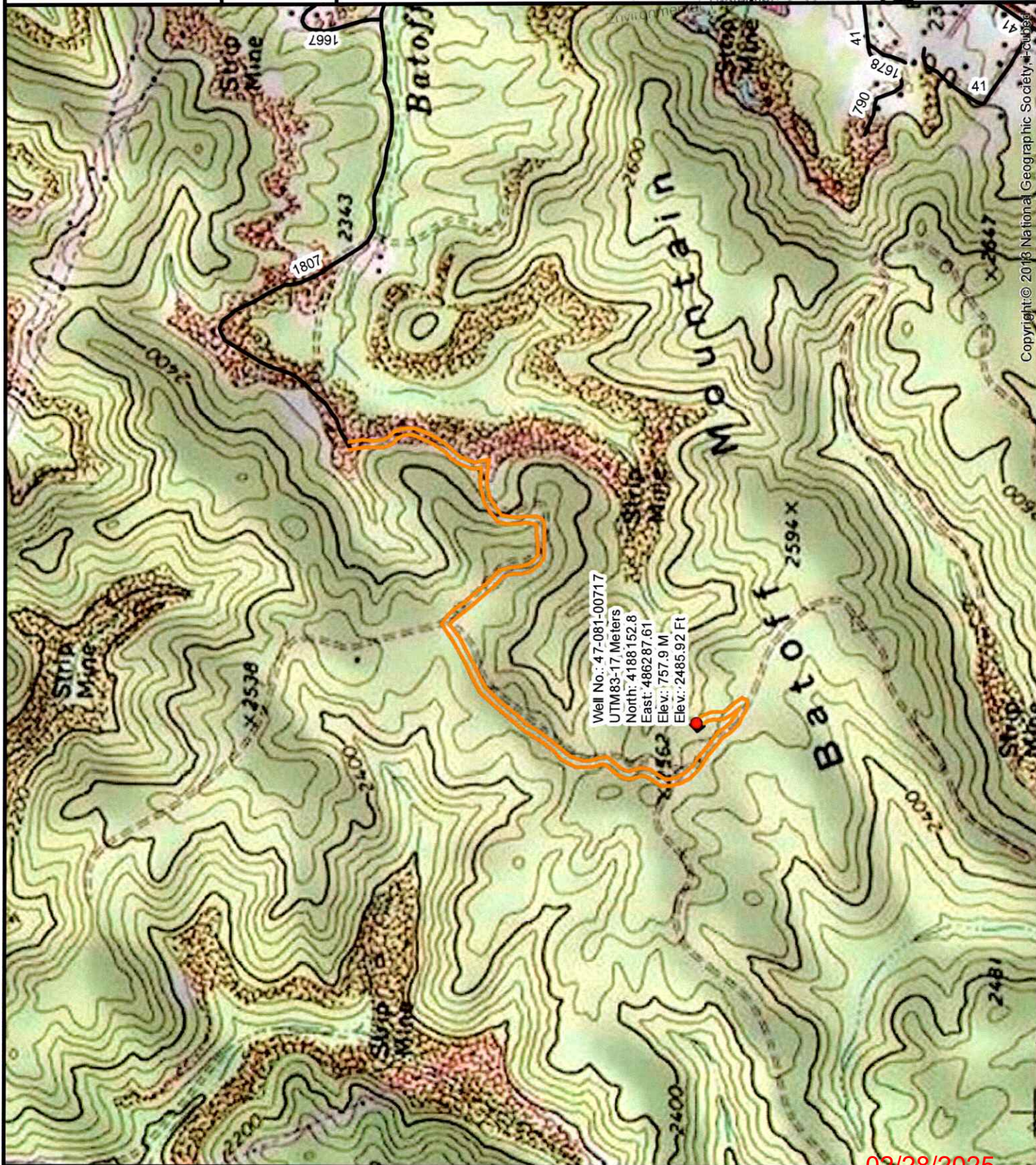
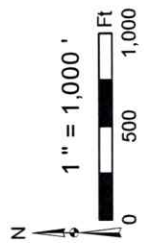
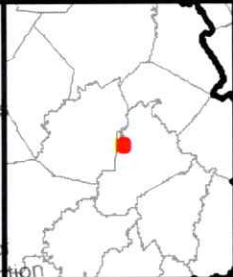
Well Plugging Map

**Legend**

-  Well
-  Access Road
-  Pits
-  Pad
-  Public Roads

RECEIVED  
Office of Oil and Gas

FEB 07 2025



Well No.: 47-081-00717  
UTM83-17 Meters  
North: 4188152.8  
East: 486287.61  
Elev.: 757.9 M  
Elev.: 2485.92 Ft

Copyright © 2018 National Geographic Society. All rights reserved.

02/28/2025

WW-7  
8-30-06



West Virginia Department of Environmental Protection  
Office of Oil and Gas  
**WELL LOCATION FORM: GPS**

API: 4708100717 WELL NO.: NEW RIVER CO NEW RIVER 36-AR

FARM NAME: New River Co New River 36 AR

RESPONSIBLE PARTY NAME: Diversified Production, LLC

COUNTY: Raleigh DISTRICT: Town

QUADRANGLE: Beckley 7.5'

SURFACE OWNER: Meadow Creek Coal Corporation

ROYALTY OWNER: Kerr-McGee Oil & Gas Onshore LP, Diamondback E&P LLC

UTM GPS NORTHING: 4188152.8

UTM GPS EASTING: 486287.61 GPS ELEVATION: 2485.92'

The Responsible Party named above has chosen to submit GPS coordinates in lieu of preparing a new well location plat for a plugging permit or assigned API number on the above well. The Office of Oil and Gas will not accept GPS coordinates that do not meet the following requirements:

- Datum: NAD 1983, Zone: 17 North, Coordinate Units: meters, Altitude: height above mean sea level (MSL) – meters.
- Accuracy to Datum – 3.05 meters
- Data Collection Method:

Survey grade GPS \_\_\_\_ : Post Processed Differential \_\_\_\_

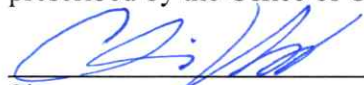
Real-Time Differential \_\_\_\_

Mapping Grade GPS X : Post Processed Differential X

Real-Time Differential \_\_\_\_

- Letter size copy of the topography map showing the well location.**

I the undersigned, hereby certify this data is correct to the best of my knowledge and belief and shows all the information required by law and the regulations issued and prescribed by the Office of Oil and Gas.

  
Signature

Chris Veazey - Director of Administration  
Title

01/29/25  
Date

RECEIVED  
Office of Oil and Gas

FEB 07 2025

WV Department of  
Environmental Protection

02/28/2025