

WW-7
8-30-06



West Virginia Department of Environmental Protection
Office of Oil and Gas
WELL LOCATION FORM: GPS

API: 47-081-01061 WELL NO.: Beaver #109
FARM NAME: Beaver Coal Company, LTD.
RESPONSIBLE PARTY NAME: Diversified Production LLC
COUNTY: Raleigh DISTRICT: Slab Fork
QUADRANGLE: Crab Orchard
SURFACE OWNER: Beaver Coal Limited Co.
ROYALTY OWNER: Beaver Coal LTD
UTM GPS NORTHING: 4171409.97
UTM GPS EASTING: 478405.79 GPS ELEVATION: 2444.9

The Responsible Party named above has chosen to submit GPS coordinates in lieu of preparing a new well location plat for a plugging permit or assigned API number on the above well. The Office of Oil and Gas will not accept GPS coordinates that do not meet the following requirements:

- Datum: NAD 1983, Zone: 17 North, Coordinate Units: meters, Altitude: height above mean sea level (MSL) – meters.
- Accuracy to Datum – 3.05 meters
- Data Collection Method:
Survey grade GPS ; Post Processed Differential
Real-Time Differential
Mapping Grade GPS ; Post Processed Differential
Real-Time Differential

4. Letter size copy of the topography map showing the well location.

I the undersigned, hereby certify this data is correct to the best of my knowledge and belief and shows all the information required by law and the regulations issued and prescribed by the Office of Oil and Gas.

Signature [Signature] Title Director Production Date 12-6-21

RECEIVED
Office of Oil and Gas
DEC 15 2021



Diversified Gas & Oil
Corporation
100 Diversified Way
Pikeville KY, 41051

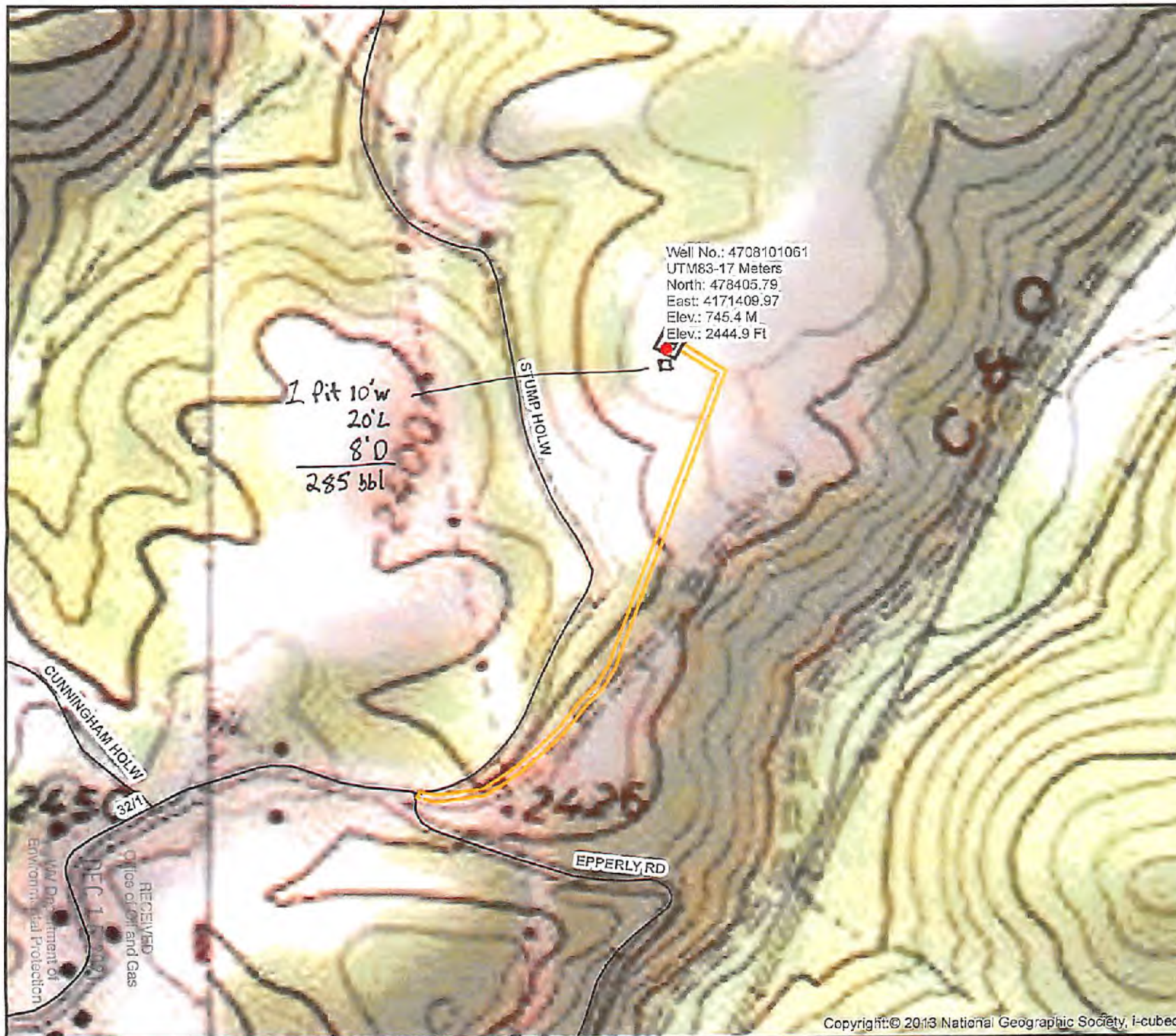
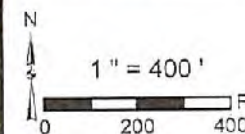
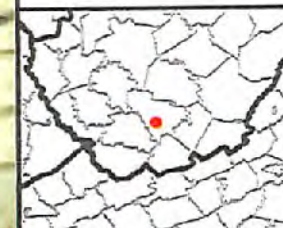
47-081-01061

Plugging Map

Legend

- Well
- Access Road
- ▨ Pits
- Pad
- Public Roads

Handwritten signature



Copyright: © 2013 National Geographic Society, i-cubed

4708101061