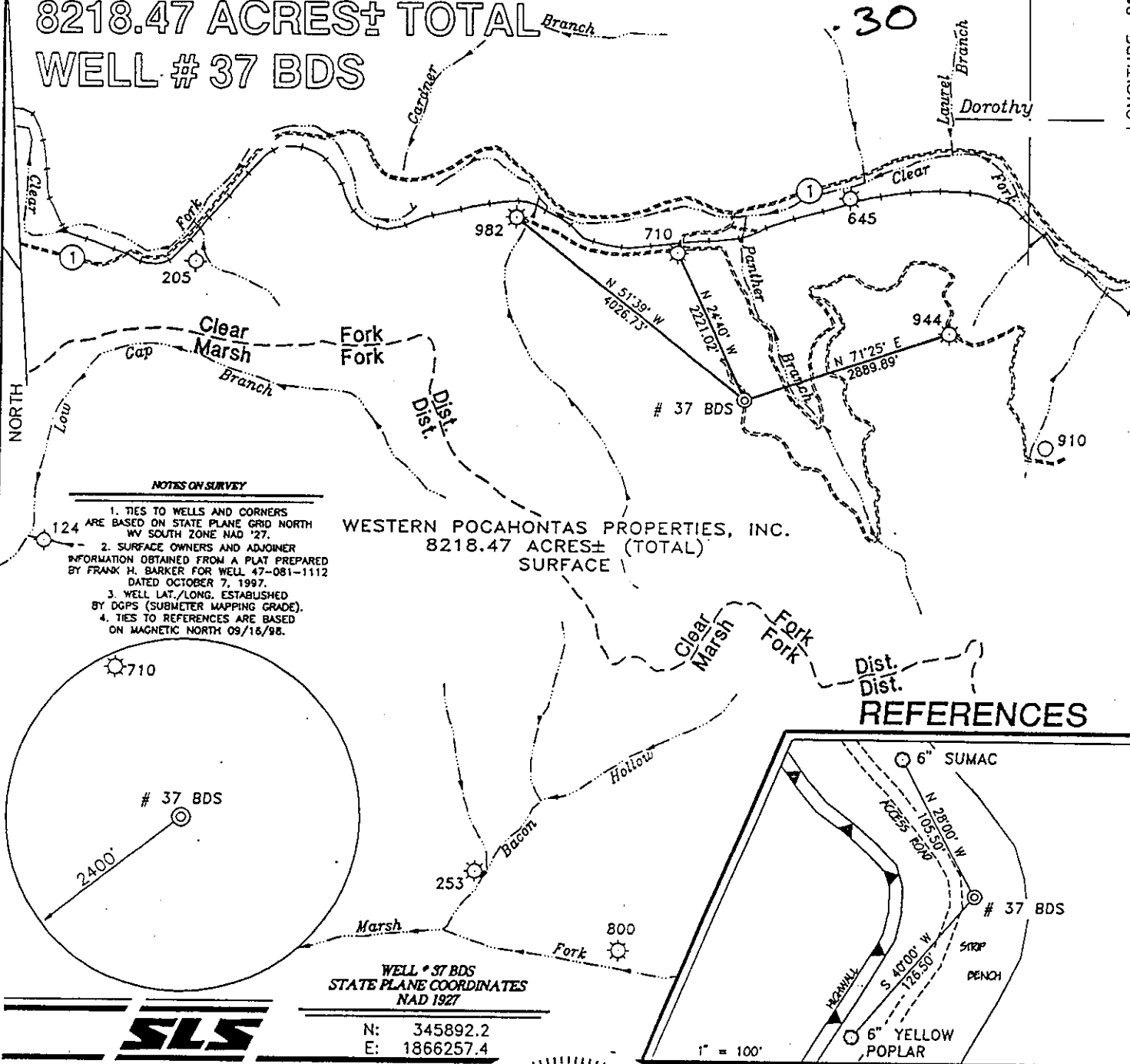


WESTERN POCAHONTAS PROPERTIES DOROTHY LEASE 8218.47 ACRES± TOTAL WELL # 37 BDS

64
30



NOTES ON SURVEY

1. TIES TO WELLS AND CORNERS ARE BASED ON STATE PLANE GRID NORTH WV SOUTH ZONE NAD '27.
2. SURFACE OWNERS AND ADJOINER INFORMATION OBTAINED FROM A PLAT PREPARED BY FRANK H. BARKER FOR WELL 47-081-1112 DATED OCTOBER 7, 1997.
3. WELL LAT./LONG. ESTABLISHED BY DGPS (SUBMETER MAPPING GRADE).
4. TIES TO REFERENCES ARE BASED ON MAGNETIC NORTH 09/16/98.

WESTERN POCAHONTAS PROPERTIES, INC.
8218.47 ACRES± (TOTAL)
SURFACE

REFERENCES

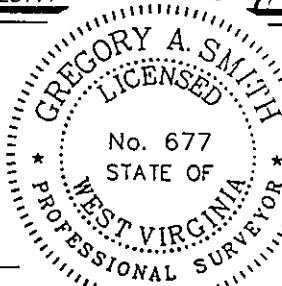
WELL # 37 BDS
STATE PLANE COORDINATES
NAD 1927

N: 345892.2
E: 1866257.4



I THE UNDERSIGNED, HEREBY CERTIFY THAT THIS PLAT IS CORRECT TO THE BEST OF MY KNOWLEDGE AND BELIEF AND SHOWS ALL THE INFORMATION REQUIRED BY LAW AND THE REGULATIONS ISSUED AND PRESCRIBED BY THE DEPARTMENT OF ENERGY.

P.S. 677 *Gregory A. Smith*



(+) DENOTES LOCATION OF WELL ON UNITED STATES TOPOGRAPHIC MAPS.

DATE OCTOBER 8, 19 98

OPERATORS WELL NO. # 37 BDS

API WELL NO. 47-081-01157
STATE COUNTY PERMIT

MINIMUM DEGREE OF ACCURACY 1 / 2500 FILE NO. 4058P37 (35-40)
PROVEN SOURCE OF ELEVATION EXISTING WELL # 30 BDS ELEVATION 1009' SCALE 1" = 2000'

STATE OF WEST VIRGINIA
DIVISION OF ENVIRONMENTAL PROTECTION
OFFICE OF OIL AND GAS



WELL TYPE : OIL GAS X LIQUID INJECTION WASTE DISPOSAL IF "GAS" PRODUCTION X STORAGE DEEP SHALLOW X

LOCATION : ELEVATION 1557' WATERSHED PANTHER BRANCH OF CLEAR FORK
DISTRICT CLEAR FORK COUNTY RALEIGH QUADRANGLE DOROTHY 7.5'

SURFACE OWNER WESTERN POCAHONTAS PROPERTIES, LTD. ACREAGE 8218.47
ROYALTY OWNER TOTAL MINATOME CORP. LEASE ACREAGE 8218.47

PROPOSED WORK : LEASE NO.
DRILL X CONVERT DRILL DEEPER REDRILL FRACTURE OR STIMULATE X PLUG OFF OLD FORMATION PERFORATE NEW FORMATION PLUG AND ABANDON CLEAN OUT AND REPLUG OTHER

PHYSICAL CHANGE IN WELL (SPECIFY) TARGET FORMATION GORDON SHALE
ESTIMATED DEPTH 5,240'

WELL OPERATOR PEAKE ENERGY, INC. DESIGNATED AGENT TOM LIBERATORE
ADDRESS P.O. BOX 8 RAVENSWOOD, WV 26164 ADDRESS P.O. BOX 8 RAVENSWOOD, WV 26164

6-6 262

COUNTY NAME RALEIGH
PERMIT 1157

WR-35

RECEIVED
Office of Oil and Gas
FEB 09 1999
WV Division of
Environmental Protection

Jan. 27, 1999
API# 47- 81- 01157

State of West Virginia
Division of Environmental Protection
Section of Oil and Gas

Well Operator's Report of Well Work

Farm Name: WESTERN POCAHONTAS PROP Operator Well No.: DOROTHY 37 BDS
LOCATION: Elevation: 1557.00 Quadrangle: DOROTHY
District: CLEAR FORK
Latitude: 3,400 Feet South of 38 Deg 57 Min 30 Sec
Longitude: 1,590 Feet West of 81 Deg 27 Min 30 Sec

Company: PEAKE ENERGY, INC.
P. O. BOX 8
RAVENSWOOD, WV 26164-0008

Agent: THOMAS S. LIBERATORE

Inspector: RODNEY DILLON
Permit Issued: 11/4/98
Well Work Commenced: 11/13/1998
Well Work Completed: 11/19/1998
Verbal Plugging: N/A
Permission Granted on: N/A
Rotary x cable Rig
Total Depth (feet): 5241
Fresh Water Depths (ft): 30
Salt Water Depths (ft): 290, 1400'

Casing & Tubing Size	Used in Drilling	Left In Well	Cement Fill Up Cu. Ft.
9 5/8"	132	132	50 Class A
7"	1773	1773	280 Class A
4 1/2"	5219	5219	120 Tuff Lite

Is coal being mined in the area (Y/N)? Y
Coal Depths (ft): 101, 155, 185

OPEN FLOW DATA

Producing formation GORDON Pay zone depth (ft) 3486-3501
 Gas: Initial open flow 0 MCF/d Oil: Intial open flow N/A Bbl/d
 Final open flow 1.5M MCF/d Final open flow N/A Bbl/d
 Time of open flow between initial and final tests N/A Hours
 Static rock pressure _____ psig (surface pressure) after 24 Hours

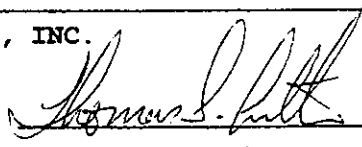
Second producing formation Devonian Brown Shale Pay zone depth (ft) 4400-5113
 Gas: Initial open flow See Above* MCF/d Oil: Intial open flow N/A Bbl/d
 Final open flow See Above* MCF/d Final open flow N/A Bbl/d
 Time of open flow between initial and final tests See Above* Hours
 Static rock pressure See Above* psig (surface pressure) after See Above* Hours

*Open flow and Rock Pressures are combined

NOTE: ON BACK OF THIS FORM PUT THE FOLLOWING: 1) DETAILS OF PERFORATED INTERVALS, FRACTURING OR STIMULATING, PHYSICAL CHANGE, ETC; 2) THE WELL LOG WHICH IS A SYSTEMATIC DETAILED GEOLOGICAL RECORD OF ALL FORMATION, INCLUDING COAL ENCOUNTERED BY THE WELLBORE.

For: PEAKE ENERGY, INC.

By:



Date:

2-2-99

RAL 1157

FEB 19 1999

WR-35
(Reverse)

January 25, 1999

API/Permit #: 4708101157
'Peake' Well #: 37 BDS Dorothy
Elevation: 1557

DETAILS OF PERFORATING, FRACTURING, OR PHYSICAL CHANGE, ETC.

Dowell on Location (7AM); Dump 500 gallons of 15% HCL acid in 4 1/2 casing. Perforate Devonian Shale: 30 Single fire shots and 10 dual-fire shots. Single: 4611, 4618, 4673.5, 4681, 4709, 4715, 4751, 4810, 4817.5, 4825, 4832, 4844, 4854, 4882, 4888, 4911, 4918, 4950.5, 4957, 4979, 4984.5, 5006, 5011, 5024, 5032, 5041, 5049, 4069, 5101, 5108. Double: 4614.5, 4677, 4712, 4747, 4885, 4954, 4971, 5002, 5046, 5078. TOTAL HOLES: 50.

BHTP	SCF/BBL	Breakdown	2,330	ISIP.	1,800
Max Pressure	Avg Pressure	N2 PAD		Rate	48,000

Nitrogen Frac: Dev Shale: Plump 600,000 SCF of N2 at 50,000SCF/min, drop 30 perf balls with an additional 500 gallons of 15% HCL acid and continue to pump N2 at 50,000 SCF/min till cummulative N2 total reaches 1.2 million SCF

Perforate Gordon-Sand 3484-3497; 34 holes
7"x 4 1/2" head pressure up after perforating.

WELL LOG

ROCK TYPE OR FORMATION NAME	TOP	BOTTOM	REMARKS
SAND	0	446	
SHALE	446	596	
SAND	596	662	
SHALE	662	752	
SAND	752	1460	
SHALE	1460	1786	
AVIS LIMESTONE	1786	1819	
SHALE	1819	2288	
LOWER MAXTON SAND	2288	2340	
SHALE	2340	2354	
LITTLE LIME (REYNOLDS)	2354	2407	
PENCIL CAVE SHALE	2407	2434	
BIG LIME (GREENBRIAR)	2434	2755	
SHALE	2755	2874	
WEIR	2874	2911	
SHALE	2911	3260	
COFFEE SHALE (SUNBURY)	3260	3275	
BEREA HORIZON	3275		
SHALE	3276	3486	
GORDON SILTSTONE	3486	3501	
SHALE	3501	4400	
BROWN SHALE (LOWER HURON)	4400	5113	
SHALE	5113	5241	
TOTAL DEPTH (LOGGER'S)	5241		
TOTAL DEPTH (DRILLER'S)	5241		

SIGAS @ 4704
4750