

WW-7
8-30-06



West Virginia Department of Environmental Protection
Office of Oil and Gas
WELL LOCATION FORM: GPS

API: 47-081-01235 WELL NO.: 305-C

FARM NAME: Beaver Coal

RESPONSIBLE PARTY NAME: Exco Resources PA LLC

COUNTY: Raleigh DISTRICT: Slab Fork

QUADRANGLE: Lester 7.5

SURFACE OWNER: Beaver Coal Company

ROYALTY OWNER: Beaver Coal Company

UTM GPS NORTHING: 4173607.95

UTM GPS EASTING: 469154.83 GPS ELEVATION: 2005'

The Responsible Party named above has chosen to submit GPS coordinates in lieu of preparing a new well location plat for a plugging permit or assigned API number on the above well. The Office of Oil and Gas will not accept GPS coordinates that do not meet the following requirements:

1. Datum: NAD 1983, Zone: 17 North, Coordinate Units: meters, Altitude: height above mean sea level (MSL) – meters.
2. Accuracy to Datum – 3.05 meters
3. Data Collection Method:

Survey grade GPS : Post Processed Differential
Real-Time Differential

Mapping Grade GPS : Post Processed Differential
Real-Time Differential

4. Letter size copy of the topography map showing the well location.

I the undersigned, hereby certify this data is correct to the best of my knowledge and belief and shows all the information required by law and the regulations issued and prescribed by the Office of Oil and Gas.

[Signature] Construction Specialist 1-21-14
Signature Title Date

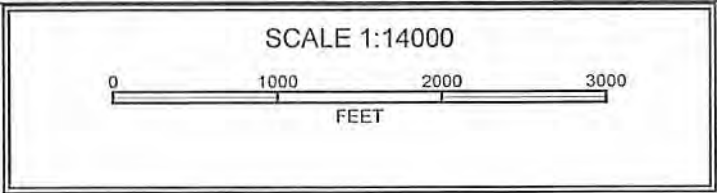
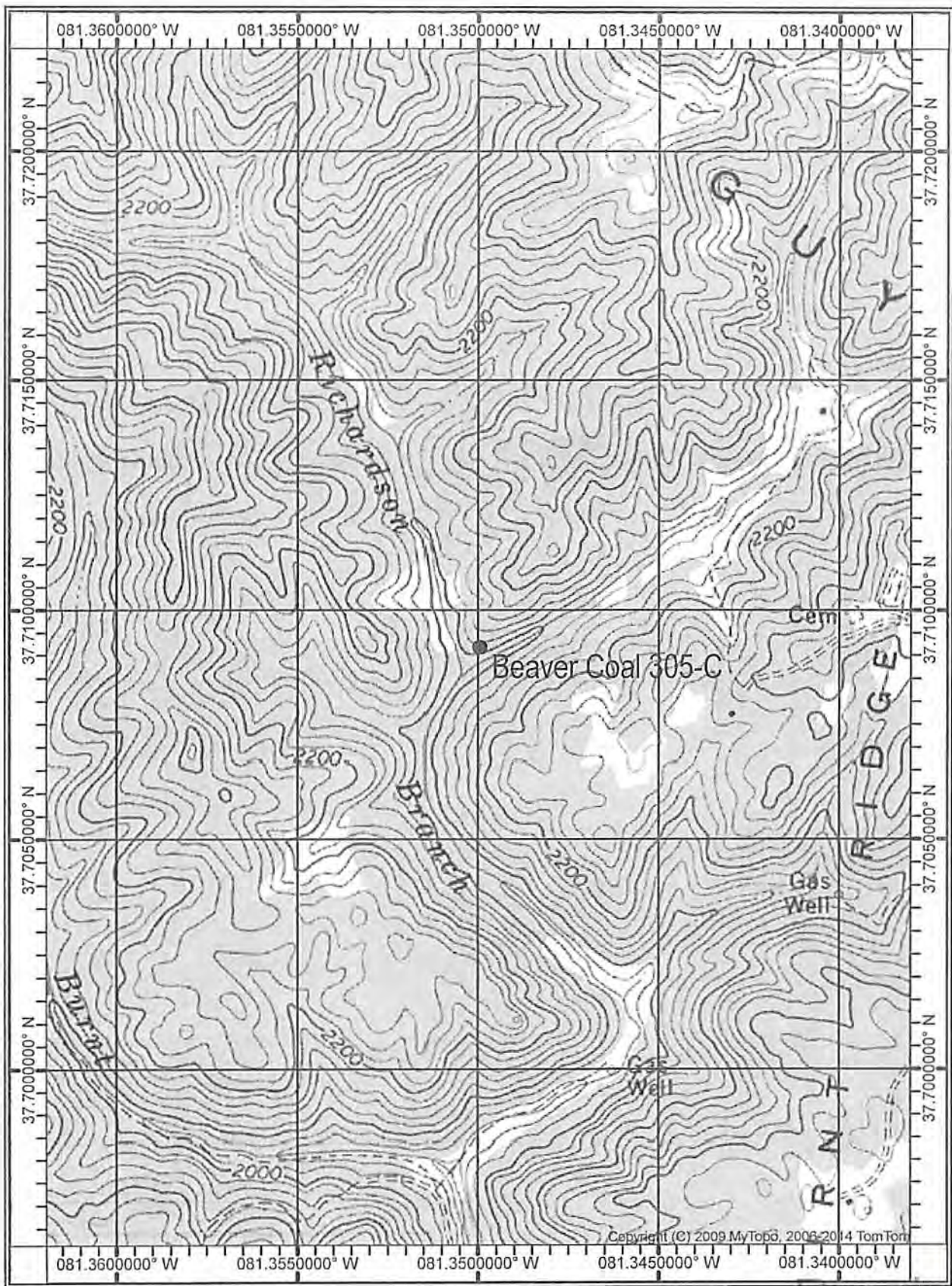
Received

APR 17 2014

Office of Oil and Gas
WV Dept. of Environmental Protection

[Handwritten mark]

8101235A



Received

APR 17 2014

Office of Oil and Gas
WV Dept. of Environmental Protection