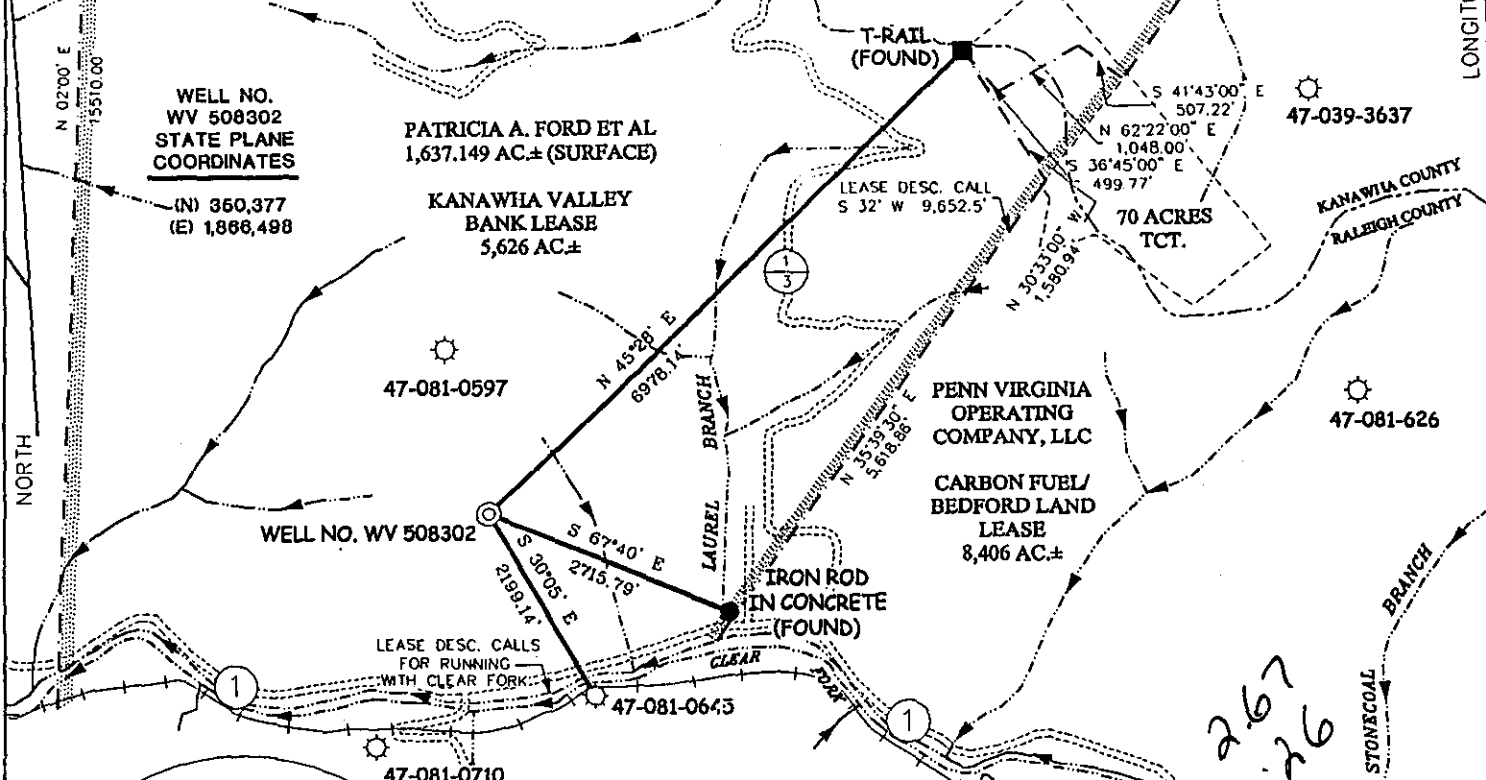


KANAWHA VALLEY BANK LEASE

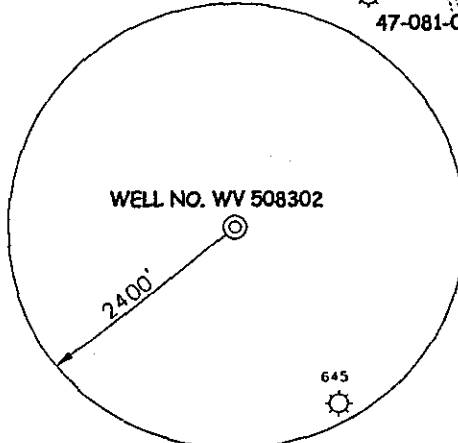
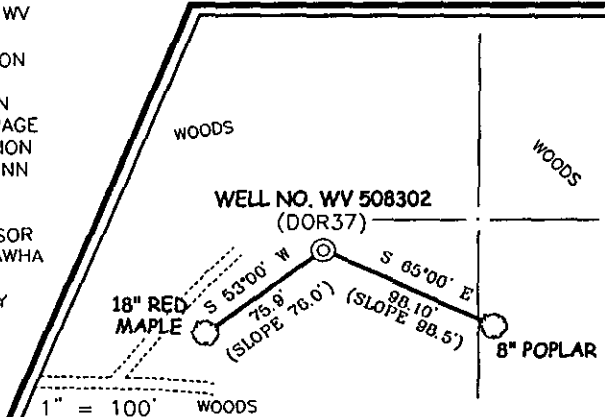
5,626 ACRES ± WELL NO. WV 508302



NOTES ON SURVEY

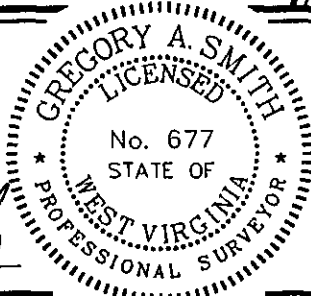
1. TIES TO WELLS AND CORNERS ARE BASED ON STATE PLANE GRID NORTH WV SOUTH ZONE NAD '27.
2. TIES TO REFERENCES ARE BASED ON MAGNETIC NORTH 1-14-02.
3. LEASE BOUNDARY SHOWN HEREON TAKEN FROM A LEASE BOOK 140 AT PAGE 465 ALONG WITH MAPS AND INFORMATION PROVIDED BY GARY PERSINGER OF PENN VIRGINIA OPERATING CO., LLC.
4. SURFACE OWNER AND ADJOINER INFORMATION TAKEN FROM THE ASSESSOR AND COUNTY CLERK RECORDS OF KANAWHA COUNTY IN DECEMBER, 2001.
5. WELL LAT./LONG. ESTABLISHED BY DGPS(SUBMETER MAPPING GRADE).

REFERENCES



I THE UNDERSIGNED, HEREBY CERTIFY THAT THIS PLAT IS CORRECT TO THE BEST OF MY KNOWLEDGE AND BELIEF AND SHOWS ALL THE INFORMATION REQUIRED BY LAW AND THE REGULATIONS ISSUED AND PRESCRIBED BY THE DEPARTMENT OF ENVIRONMENTAL PROTECTION.


P.S. 677 *Gregory A. Smith*



(+) DENOTES LOCATION OF WELL ON UNITED STATES TOPOGRAPHIC MAPS.
 DATE FEBRUARY 5, 2002
 OPERATORS WELL NO. WV 508302
 API WELL NO. 47-81-01263
 STATE COUNTY PERMIT

MINIMUM DEGREE OF ACCURACY 1 / 2500 FILE NO. 4677P508302(111-65)
 PROVEN SOURCE OF ELEVATION BENCHMARK ELEVATION = 984' SCALE 1" = 2000'

STATE OF WEST VIRGINIA
 DIVISION OF ENVIRONMENTAL PROTECTION
 OFFICE OF OIL AND GAS



WELL TYPE : OIL GAS LIQUID INJECTION WASTE DISPOSAL IF "GAS" PRODUCTION STORAGE DEEP SHALLOW

LOCATION :
 ELEVATION 1,542' WATERSHED CLEAR FORK
 DISTRICT CLEAR FORK COUNTY RALEIGH QUADRANGLE DOROTHY 7.5'

SURFACE OWNER PATRICIA A. FORD ET AL ACREAGE 1,637.149
 ROYALTY OWNER PATRICIA A. FORD ET AL LEASE ACREAGE 5,626
 PROPOSED WORK : LEASE NO. 010306

DRILL CONVERT DRILL DEEPER REDRILL FRACTURE OR STIMULATE PLUG OFF OLD FORMATION PERFORATE NEW FORMATION PLUG AND ABANDON CLEAN OUT AND REPLUG OTHER

PHYSICAL CHANGE IN WELL (SPECIFY) _____ TARGET FORMATION DEVONIAN SHALE
 ESTIMATED DEPTH 6,250-5,200'

WELL OPERATOR EQUITABLE PRODUCTION COMPANY DESIGNATED AGENT STEPHEN G. PERDUE
 ADDRESS P.O. BOX 2347, CHARLESTON, WV 25328 ADDRESS P.O. BOX 2347, CHARLESTON, WV 25328

MAR 29 2002

6-6 262

COUNTY NAME RAL PERMIT 1263

State of West Virginia
Division of Environmental Protection
Section of Oil and Gas

Reviewed AKP

Well Operator's Report of Well Work

Farm Name: Ford, Patricia A. Etal Operator Well No.: 508302

LOCATION: Elevation: 1542' Quadrangle: Dorothy

District: Clear Fork County: Raleigh

Latitude: 14,080 Feet South of 38 Deg. 0 0
Longitude: 1380 Feet West of 81 Deg. 27 30

Company: Equitable Production Company
P.O. Box 2347, 1710 Pennsylvania Avenue
Charleston, WV 25328

Agent: Stephen G. Perdue

Inspector: Ofie Helmick

Permit Issued: 3/26/2002

Well work commenced: 06/24/02

Well work completed: 07/31/02

Verbal Plugging

Permission granted on: _____

Rotary Rig X Cable Rig _____

Total Depth 5260 feet _____

Fresh water depths (ft) 60', 672'

Salt water depths (ft) 1251'

Is coal being mined in area? _____

Coal Depths (ft): 96'-99'; 177'-182'; 492'-496'

Open Mine 291'-294'

OPEN FLOW DATA

Producing formation Lower Shale; Upper Shale; Gordon / Berea

Pay Zone Depth (ft): _____

See Attach for details

Gas: Initial open flow 311 MCF/d

Oil: Initial open flow _____ Bbl/d

Final open flow: 1433 MCF/d

Final open flow: _____

Time of open flow between initial and final tests _____ Hours

Static rock pressure 675 psig (surface pressure) after _____ Hours

Second producing formation _____

Pay Zone Depth (ft): _____

Gas: Initial open flow _____ MCF/d

Oil: Initial open flow _____ Bbl/d

Final open flow: _____ MCF/d

Final open flow: _____

Time of open flow between initial and final tests _____ Hours

Static rock pressure _____ psig (surface pressure) after _____ Hours

NOTE: ON BACK OF THIS FORM PUT THE FOLLOWING: 1) DETAILS OF PERFORATED INTERVALS, FRACTURING OR STIMULATING, PHYSICAL CHANGE, ETC. 2) THE WELL LOG WHICH IS A SYSTEMATIC DETAILED GEOLOGICAL RECORD OF ALL FORMATIONS, INCLUDING COAL ENCOUNTERED BY THE WELLBORE.

RECEIVED
Office of Oil & Gas
Permitting
SEP 27 2002
WV Department of
Environmental Protection

Kathy D. Sawyer
For: Equitable Production Company

By: [Signature]
Date: 9/27/02

007 8 5 2002

RA 1063

Casing & Tubing Size	Used in Drilling	Left in Well	Cement Fill Up Cu. Ft.
13 3/8"	32'	32'	grouted
9 5/8"	950'	950'	389.2 ft ³
7"	2152'	2152'	414.3 ft ³
4 1/2"	5250'	5250'	483.6 ft ³
2 3/8"		5079'	

**EQUITABLE PRODUCTION COMPANY
WR-35 COMPLETION REPORT - Attachment
Well Treatment Summary**

Well: WV-508302-KVB

API# 47-081-01263

Date	07/18/02	07/25/02	07/25/02			
Type of frac	N ₂	N ₂	Variable			
Acid, N ₂ , Foam, Water			Foam			
Zone Treated	Lower Shale	Upper Shale	Gordon Berea			
# Perfs	60	30	30			
From - To:	4154'-5133'	4055'-3550'	3235' - 3508'			
BD Pressure @ psi	2340	3070	210			
ATP psi	2598	2100	2375			
Avg. Rate, B=B/M, S= SCF/M	52,399 S	45,650 S	40 B (foam)			
Max. Treat Press psi	2682	2170	2560			
ISIP psi	1906	1420	60			
Frac Gradient	.48	.43	.45			
10 min S-I Pressure	1606	1350	1060			
Material Volume						
Sand-sks			356			
Water-bbl			183			
SCF N ₂	1,259,855	718,938	275,497			
Acid-gal	750 gal 7 ½%	500 gal 7 ½%	500 gal 15%			
NOTES:						

TOP	BOTTOM	FORMATION	REMARKS
		Coal	96'-99'; 177'-182'; 492'-496' Open Mine 291'-294' Water @ 60', 672' & 1251'
887'	1519'	SALT SAND: LOWER	GT @ 2164' = NS GT @ 2306' = NS
2340'	2362'	MAXTON:	
2396'	2465'	LITTLE LIME:	
2489'	2788'	BIG LIME:	GT @ 2523' & 2709' = NS
2828'	2859'	BIG INJUN:	GT @ 3079' = NS
2908'	3043'	WEIR:	GT @ 3326' = NS
3265'	3283'	SUNBURY:	GT @ 3543' = NS
3283'	3326'	BEREA:	GT @ 3820' = NS
3493'	3510'	GORDON:	GT @ 4132' = NS
4413'	5144'	LOWER HURON:	GT @ 4473' & 4751' = 59 mcf
5144'		JAVA:	
	5260'	TD:	GT @ TD = 145 mcf GT @ DC = 157 mcf, after csg = 311 mcf

RECEIVED
Office of Oil & Gas
Permitting

SEP 27 2002

WV Department of
Environmental Protection