



Diversified Gas & Oil Corporation  
100 Diversified Way  
Pikeville KY, 41051

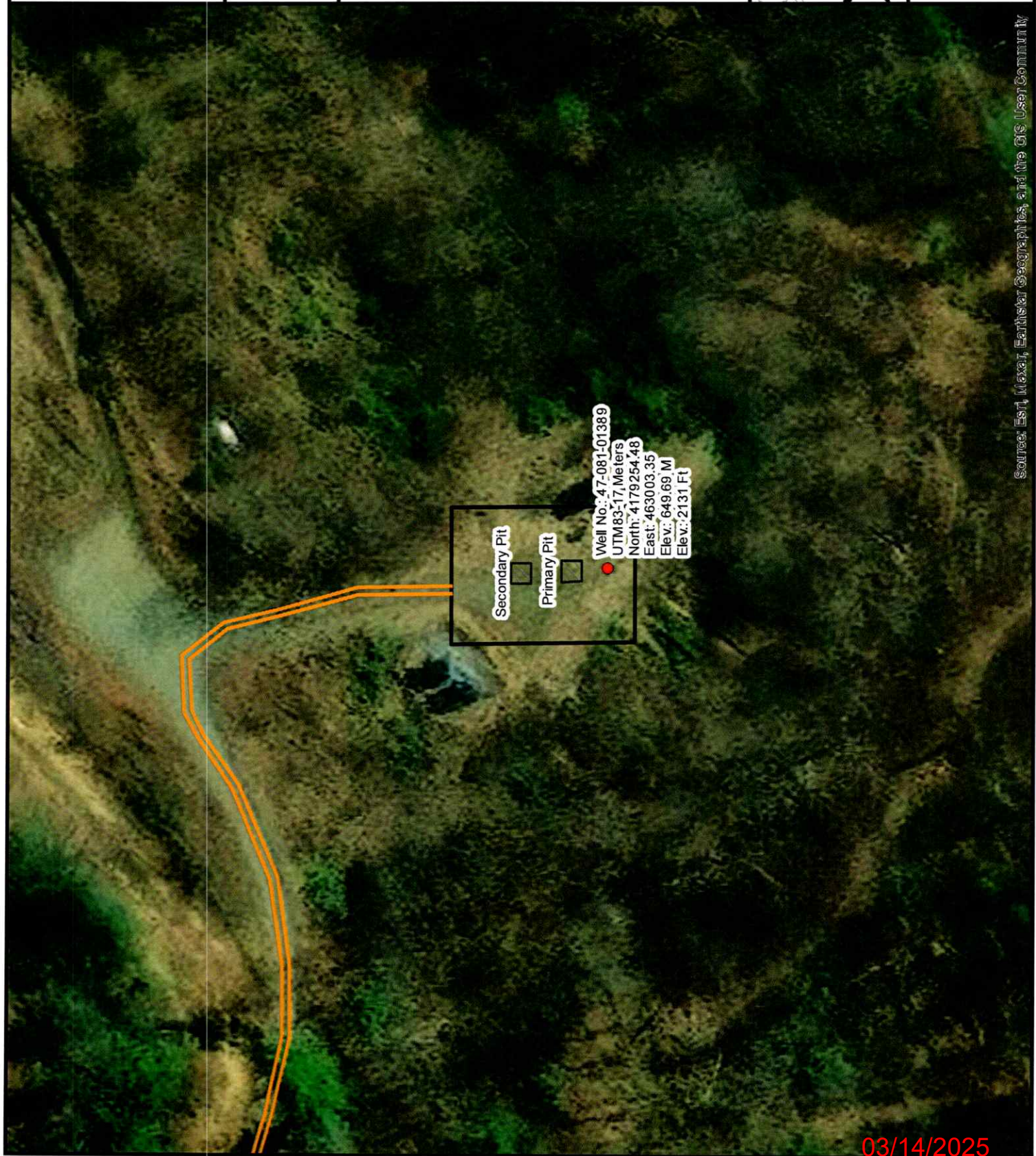
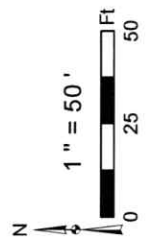
47-081-01389

Plugging Map

**Legend**

- Well
- Access Road
- Pits
- Pad
- Public Roads

RECEIVED  
Office of Oil and Gas  
FEB 07 2025  
WV Department of Environmental Protection



Secondary Pit  
Primary Pit

Well No.: 47-081-01389  
UTM83-17, Meters  
North: 4179254.48  
East: 463003.35  
Elev.: 649.69 M  
Elev.: 2131 Ft

Source: Est. Map, Earthstar Geographics, and the GIS User Community

03/14/2025

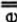






Diversified Gas & Oil Corporation  
100 Diversified Way  
Pikeville KY, 41051

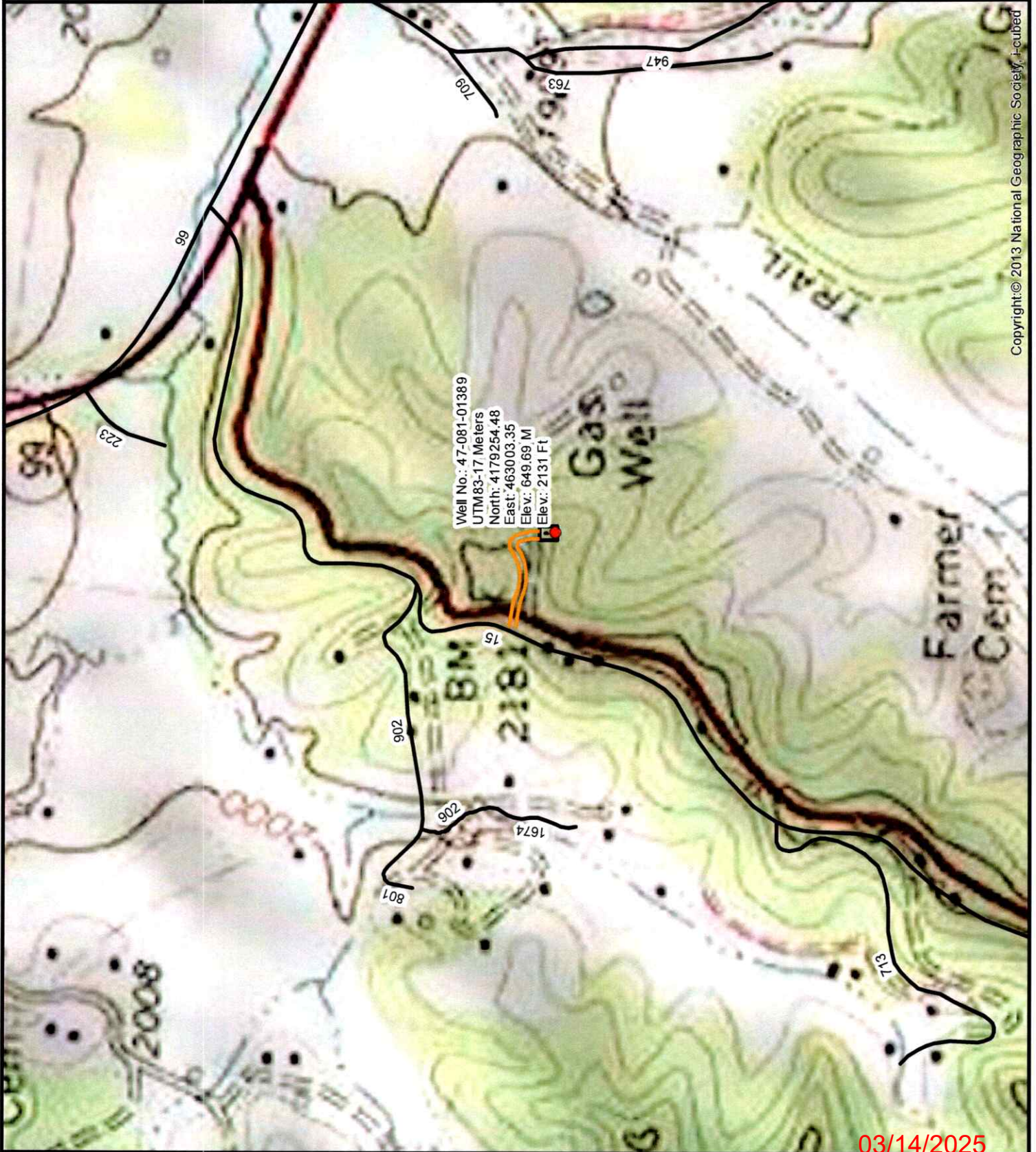
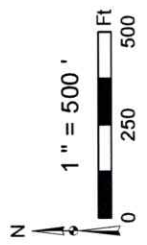
47-081-01389

Plugging Map

**Legend**

-  Well
-  Access Road
-  Pits
-  Pad
-  Public Roads

RECEIVED  
Office of Oil and Gas  
FEB 07 2025  
Department of  
Environmental Protection



Copyright © 2013 National Geographic Society, Inc.



West Virginia Department of Environmental Protection  
Office of Oil and Gas  
**WELL LOCATION FORM: GPS**

API: 4708101389 WELL NO.: Sadler 1C

FARM NAME: Susanna Sadler

RESPONSIBLE PARTY NAME: Diversified Production, LLC

COUNTY: Raleigh DISTRICT: Trap Hill

QUADRANGLE: Arnett 7.5'

SURFACE OWNER: Susanna K. Sadler, Revocable Trust

ROYALTY OWNER: Penn Virginia Oil & Gas Corporation

UTM GPS NORTHING: 4179254.48

UTM GPS EASTING: 463003.35 GPS ELEVATION: 2131'

The Responsible Party named above has chosen to submit GPS coordinates in lieu of preparing a new well location plat for a plugging permit or assigned API number on the above well. The Office of Oil and Gas will not accept GPS coordinates that do not meet the following requirements:

1. Datum: NAD 1983, Zone: 17 North, Coordinate Units: meters, Altitude: height above mean sea level (MSL) – meters.
2. Accuracy to Datum – 3.05 meters
3. Data Collection Method:

Survey grade GPS \_\_\_\_ : Post Processed Differential \_\_\_\_  
Real-Time Differential \_\_\_\_

Mapping Grade GPS X : Post Processed Differential X  
Real-Time Differential \_\_\_\_

4. **Letter size copy of the topography map showing the well location.**

I the undersigned, hereby certify this data is correct to the best of my knowledge and belief and shows all the information required by law and the regulations issued and prescribed by the Office of Oil and Gas.

Signature

Chris Veazey - Director of Administration  
Title

01/31/2025  
Date

RECEIVED  
Office of Oil and Gas  
FEB 07 2025  
WV Department of  
Environmental Protection



PENN VIRGINIA  
OIL & GAS

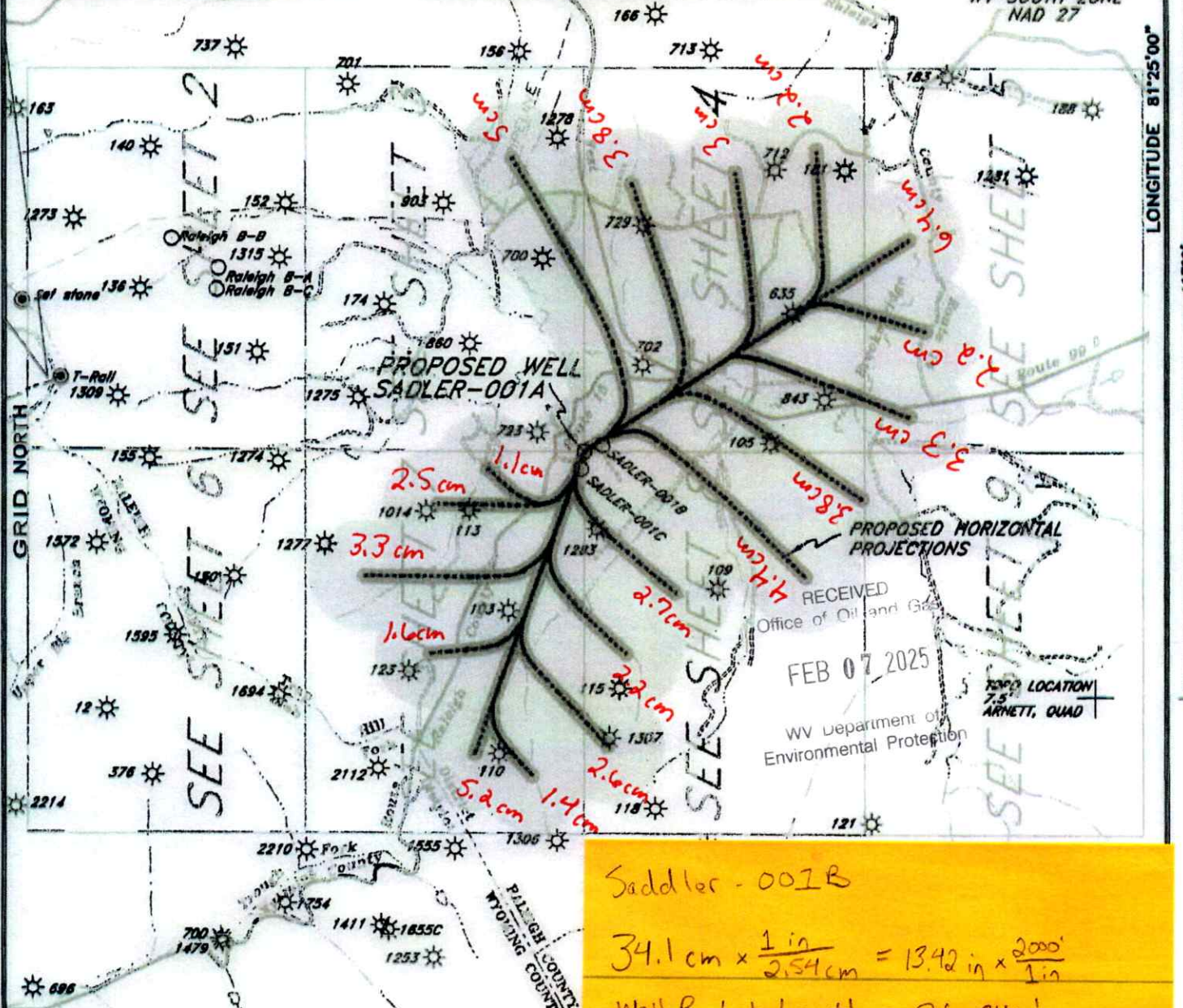
SADLER-001A  
SHEET 1 OF 17  
SCALE: 1" = 2000'

BEARING CHART

LATITUDE 37°47'30"

Well Number		Bearing	Distance
From	To		
723	SADLER-001B	S78°57'47"E	899.29'
SADLER-001B	SADLER-001A	S71°46'13"W	259.89'
SADLER-001A	SADLER-001C	S10°29'04"W	238.89'
SADLER-001C	1283	S14°59'33"E	817.42'

PROPOSED WELL  
COORDINATES  
N:277159.93  
E:1878570.43  
WV SOUTH ZONE  
NAD 27



Saddler - 001B  
 $34.1 \text{ cm} \times \frac{1 \text{ in}}{2.54 \text{ cm}} = 13.42 \text{ in} \times \frac{2000'}{1 \text{ in}}$   
 Well B Lat Length = 26,840'

Saddler - 001C  
 $22.6 \text{ cm} \times \frac{1 \text{ in}}{2.54 \text{ cm}} = 8.90 \text{ in} \times \frac{2000'}{1 \text{ in}}$   
 Well C Lat Length = 17,800'

(+) DENOTES LOCATION OF WELL ON UNITED STATES TOPOGRAPHIC MAPS

FILE NO. 04075  
DRAWING NO. 04075A  
SCALE 1"=2000'  
MINIMUM DEGREE OF ACCURACY 1:31600  
PROVEN SOURCE OF ELEVATION GPS DISK NO. A1  
2003.64'

I THE UNDERSIGNED HAS PREPARED THIS PLAT IN ACCORDANCE WITH THE KNOWLEDGE AND INFORMATION RECEIVED AND IN ACCORDANCE WITH THE REGULATIONS ISSUED BY THE DEPARTMENT OF ENVIRONMENTAL PROTECTION (SIGNED) [Signature] R.P.E.

STATE OF WEST VIRGINIA  
DEPARTMENT OF ENVIRONMENTAL PROTECTION  
OIL AND GAS DIVISION



DATE REVISED: AUGUST 5, 2005  
OPERATOR'S WELL NO. SADLER-001A  
API WELL NO. 47-81-01387C  
STATE COUNTY PERMIT

WELL TYPE: OIL GAS LIQUID INJECTION WASTE DISPOSAL  
(IF "GAS,") PRODUCTION STORAGE DEEP SHALLOW  
LOCATION: ELEVATION 2147.97' WATERSHED CLEAR FORK  
DISTRICT TRAP HILL COUNTY RALEIGH  
QUADRANGLE ARNETT, WV

SURFACE OWNER SUSANNA K. SADLER ACREAGE 272  
OIL & GAS ROYALTY OWNER PENN VIRGINIA OIL & GAS CORPORATION LEASE ACREAGE 272  
LEASE NO.

PROPOSED WORK: DRILL  CONVERT  DRILL DEEPER  REDRILL  FRACTURE OR STIMULATE  PLUG OFF OLD FORMATION  PERFORATE NEW FORMATION  OTHER PHYSICAL CHANGE IN WELL (SPECIFY)

03/14/2025

PLUG AND ABANDON  CLEAN OUT AND REPLUG   
TARGET FORMATION ESTIMATED DEPTH  
WELL OPERATOR PENN VIRGINIA OIL & GAS CORPORATION DESIGNATED AGENT MR. HARRY JEWEL  
ADDRESS 2550 EAST STONE DRIVE SUITE 110 ADDRESS PO BOX 460  
KINGSPORT, TN 37660 RAVENCLIFF, WV 25913

FORM WV-9

COUNTY NAME

PERMIT