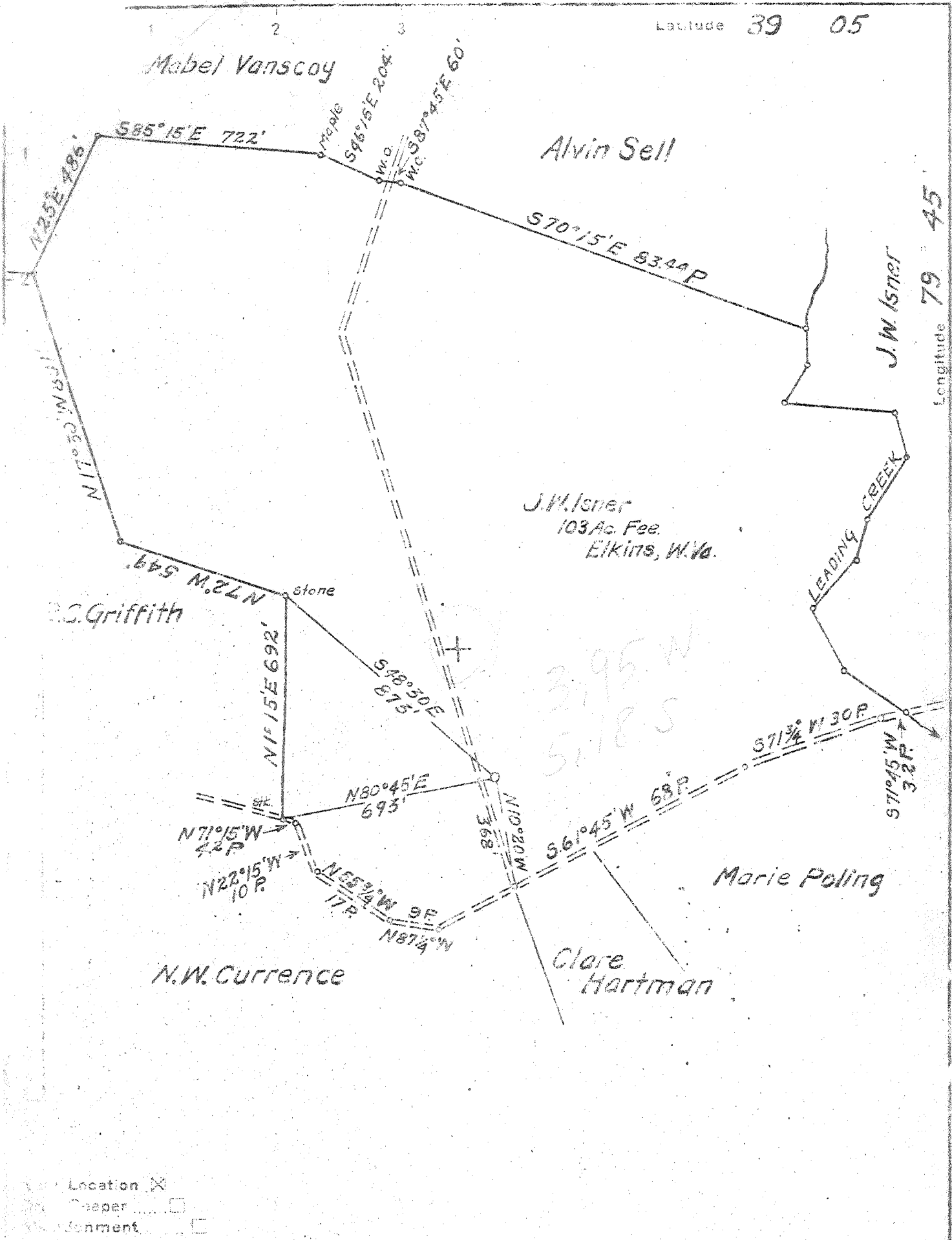


M

P

Latitude 39 05

Longitude 79 45



- Location
- Deeper
- Adornment

Company	South Penn Oil Co.		
Address	Parkersburg, W. Va.		
Farm	J. W. Isner		
Tract	Acres	524	Lease No. AB-EK-23
Well (Farm) No.	1	Serial No.	
Elevation (Spirit Level)	1972.91 Ground		
Quadrangle	Belington - SE		
County	Randolph	District	New Interest
Engineer	Mrs. S. Hayes		
Engineer's Registration No.	1423		
File No.	Drawing No.		
Date	11-9-48	Scale	1" = 400'

STATE OF WEST VIRGINIA
 DEPARTMENT OF MINES
 OIL AND GAS DIVISION
 CHARLESTON

WELL LOCATION MAP
 FILE NO. RAN-3

+ Denotes location of well on United States Topographic Maps, scale 1 to 62,500, latitude and longitude lines being represented by border lines as shown.

- Denotes one inch spaces on border line of original tracing.

WEST VIRGINIA DEPARTMENT OF MINES
OIL & GAS DIVISION
W E L L R E C O R D

Permit No. PAN-3
Bevington Quad.

Dry

Company	South Penn Oil Co.	CASING & TUBING		
Address	Union Trust Bldg., Parkersburg, W. Va.			
Farm	J. W. Isner Acres 524	16	57	Pulled
Location	Leading Creek	13	375	Pulled
Well No.	1 Elev. 1972.91	10	1882	Pulled
District	New Interest County - Randolph			
Surface	J. W. Isner, Elkins, W. Va.			Cemented 10 3/4
Mineral	J. Herman Isner, Agt., Box 1106 Elkins, W. Va.			200' 3/5/49
Commenced	12/30/48			
Completed	1/20/50			
Fresh Water	100' Salt Water 1805' 3152'			

Clay	Yellow	0	20		
Shale & Siltstone	Gray	20	603	H.F.F.W.	100'
Sh. & Siltst.	Dk. Gray	603	765		
Shale	Dk. Gray	765	1100		
Shale	Black	1100	1422		
Shale	Black	1422	1510		
Corn. Limest.	Gray	1510	1652		
Shale	Black	1652	1715		
Limestone	Gray	1715	1725		
Oriskany Sd.	Gray	1725	1864	H.F.S.W.	1805
Limestone	Gray	1864	2010		
Limestone	Dk. Gray	2010	2200		
Limestone	Gray	2200	2260		
Limestone	Gray	2260	3003	Gas Pocket	2912
Shale	Black	3003	3055		
(Oriskany) Sd.	Gray	3055	3187	Salt Water	3152
Limestone	Gray	3187	3310		
Limestone	Gray	3310	3495		
Limestone	Gray	3495	3550		
Limestone	Dk. Gray	3550	4400		
Limestone	Dk. Gray	4400	4800		
Shale	Dk. Gray	4800	5020		
Limestone	Dk. Gray	5020	5335		
Siltstone	Gray	5335	5350		
Shale	Gray	5350	5770		
Siltst. & Sd. Stone	Gray	5770	5960		
Sandstone	Dk. Gray	5960	6023		
Siltstone	Gray	6023	6095		
TOTAL DEPTH			6095		

1100
1100
765
225

1973
1510
+ 463

1973
1725
+ 248

1973
1864
+ 109

Note: "Clinton" (Medina) Sand was not reached, hole was in bad condition, and after a long fishing job, was abandoned. The Oriskany sand was repeated by faulting.

3055 3187
1973 1973

1082 1214

6300
1473

4827