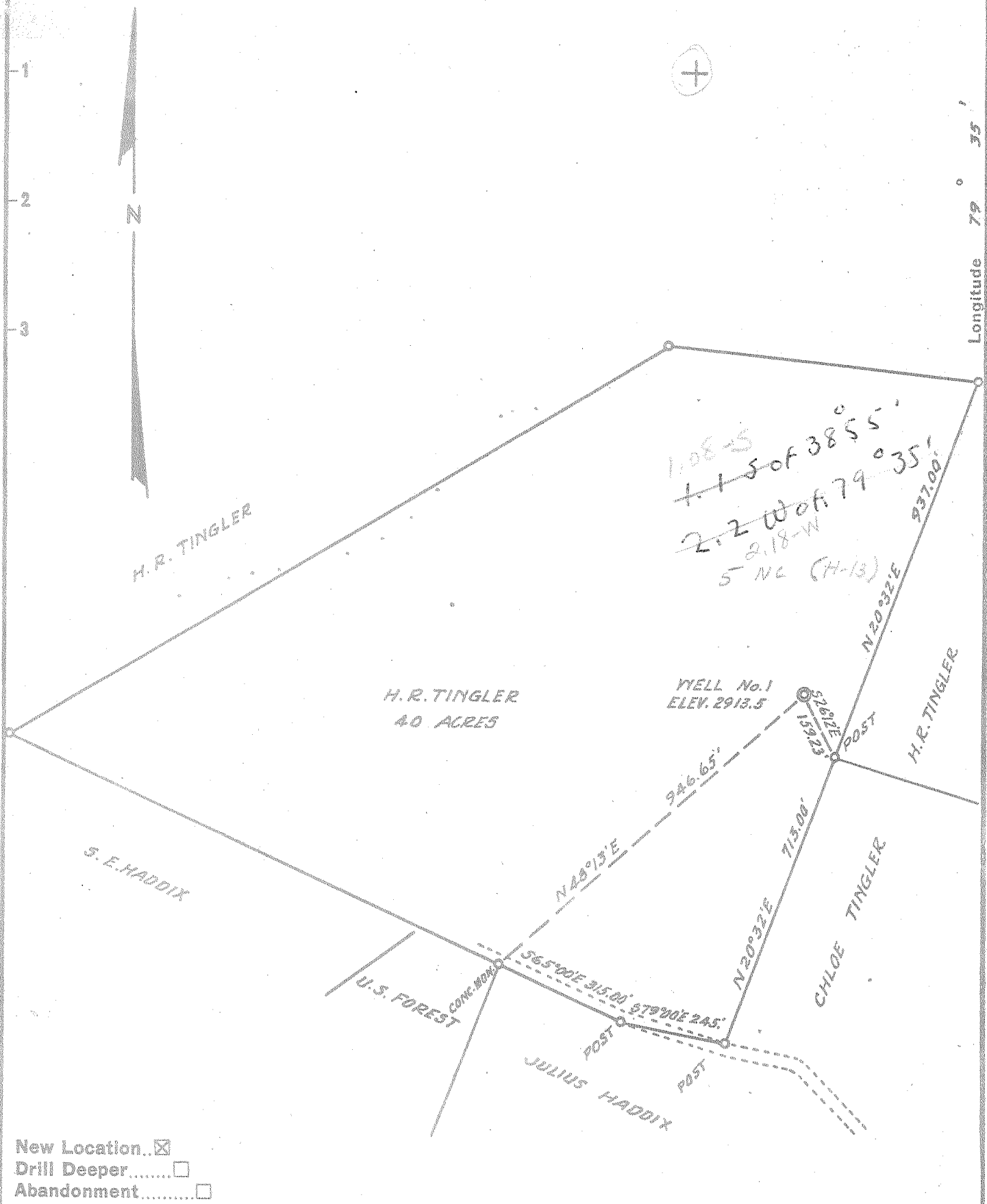


Latitude 38° 55'

Longitude 79° 35'

N



New Location...    
 Drill Deeper.....    
 Abandonment.....

Company NELSON W. TAYLOR Agent for BEN FRANKLIN OIL & GAS CORP.

Address 17 BATTERY PLACE, NEW YORK, N.Y.

Farm H.R. TINGLER

Tract \_\_\_\_\_ Acres 40 Lease No. \_\_\_\_\_

Well (Farm) No. 1 Serial No. \_\_\_\_\_

Elevation (Spirit Level) 2913.5

Quadrangle HORTON - C

County RANDOLPH District DRY FORK

Engineer D.W. Carpenter

Engineer's Registration No. 765

File No. E1-112355 Drawing No. \_\_\_\_\_

Date 11-23-55 Scale 1" = 300'

STATE OF WEST VIRGINIA  
 DEPARTMENT OF MINES  
 OIL AND GAS DIVISION  
 CHARLESTON

WELL LOCATION MAP  
 FILE NO. TRAN-82

+ Denotes location of well on United States Topographic Maps, scale 1 to 62,500, latitude and longitude lines being represented by border lines as shown.

- Denotes one inch spaces on border line of original tracing.

6-6-261

Deep Well



STATE OF WEST VIRGINIA  
DEPARTMENT OF MINES  
OIL AND GAS DIVISION 2

Quadrangle HORTON

WELL RECORD

Permit No. RAN. 82

Oil or Gas Well GAS  
(KIND)

Company BEN FRANKLIN OIL & GAS CORP.  
Address 7 LENOX TERRACE, BLOOMFIELD, N. J.  
Farm H. R. TINGLER Acres 662.5  
Location (waters) \_\_\_\_\_  
Well No. 1 Elev. 2913  
District DRY FORK County RANDOLPH  
The surface of tract is owned in fee by H.R. TINGLER  
Address WYMER, W. VA.  
Mineral rights are owned by BEN FRANKLIN  
Address \_\_\_\_\_  
Drilling commenced 12 - 19 - 55  
Drilling completed \_\_\_\_\_  
Date Shot \_\_\_\_\_ From \_\_\_\_\_ To \_\_\_\_\_  
With \_\_\_\_\_  
Open Flow \_\_\_\_\_ /10ths Water in \_\_\_\_\_ Inch  
\_\_\_\_\_ /10ths Merc. in \_\_\_\_\_ Inch  
Volume 274,000 CUBIC FEET Cu. Ft.  
Rock Pressure 1600 lbs. \_\_\_\_\_ hrs.  
Oil \_\_\_\_\_ bbls., 1st 24 hrs.  
Fresh water \_\_\_\_\_ feet \_\_\_\_\_ feet  
Salt water \_\_\_\_\_ feet \_\_\_\_\_ feet

| Casing and Tubing | Used in Drilling | Left in Well | Packers                |
|-------------------|------------------|--------------|------------------------|
| Size              |                  |              |                        |
| 16                | 48'              |              | Kind of Packer _____   |
| 13                |                  |              | Baker                  |
| 10                | 331'             |              | Size of <u>5 1/2"</u>  |
| 8 3/4             | 1996'            |              | Depth set <u>5620'</u> |
| 6 5/8             | 5626'            |              |                        |
| 5 3/16            | 350'             |              |                        |
| 3                 |                  |              | Perf. top _____        |
| 2                 |                  |              | Perf. bottom _____     |
| Liners Used _____ |                  |              | Perf. top _____        |
|                   |                  |              | Perf. bottom _____     |

CASING CEMENTED \_\_\_\_\_ SIZE \_\_\_\_\_ No. Ft. \_\_\_\_\_ Date \_\_\_\_\_

COAL WAS ENCOUNTERED AT \_\_\_\_\_ FEET \_\_\_\_\_ INCHES

\_\_\_\_\_ FEET \_\_\_\_\_ INCHES \_\_\_\_\_ FEET \_\_\_\_\_ INCHES

\_\_\_\_\_ FEET \_\_\_\_\_ INCHES \_\_\_\_\_ FEET \_\_\_\_\_ INCHES

| Formation      | Color | Hard or Soft | Top  | Bottom | Oil, Gas or Water | Depth Found | Remarks |
|----------------|-------|--------------|------|--------|-------------------|-------------|---------|
| Clay           |       |              | 0    | 12     |                   |             |         |
| Gravel         |       |              | 12   | 18     |                   |             |         |
| Lime-Shells    |       |              | 18   | 55     |                   |             |         |
| Slate          |       |              | 55   | 62     |                   |             |         |
| Lime           |       |              | 62   | 70     |                   |             |         |
| Slate          |       |              | 70   | 177    |                   |             |         |
| Sand           |       |              | 177  | 187    |                   |             |         |
| Lime           |       | Hard         | 187  | 325    |                   |             |         |
| Lime-Shells    |       |              | 325  | 600    |                   |             |         |
| Lime           |       | Sandy        | 600  | 1287   |                   |             |         |
| Slate-Shells   |       |              | 1287 | 1330   |                   |             |         |
| Lime           | Dark  | Sandy        | 1330 | 1360   |                   |             |         |
| Slate-Shells   |       |              | 1360 | 1580   |                   |             |         |
| Lime           | Dark  |              | 1580 | 1733   | Gas - Show        | 1637        |         |
| Lime           | Brown |              | 1733 | 1760   |                   |             |         |
| Slate-Shells   |       |              | 1760 | 1788   |                   |             |         |
| Lime           | Brown |              | 1788 | 1808   |                   |             |         |
| Slate & Shells |       |              | 1808 | 1910   |                   |             |         |
| Lime           | Brown |              | 1910 | 1973   |                   |             |         |
| Slate-Shells   |       |              | 1973 | 2048   |                   |             |         |
| Lime           | Brown |              | 2048 | 2152   |                   |             |         |
| Lime           | White |              | 2152 | 2190   |                   |             |         |
| Slate-Shells   |       |              | 2190 | 2460   |                   |             |         |
| Lime           | Dark  | Gritty       | 2460 | 2560   | Gas - Show        | 2496        |         |
| Slate-Shells   |       |              | 2560 | 2980   |                   |             |         |
| Lime           | Dark  | Hard         | 2980 | 3090   |                   |             |         |
| Slate-Shells   |       |              | 3090 | 4115   |                   |             |         |
| Lime           |       | Hard         | 4115 | 4140   |                   |             |         |
| Slate          |       | Hard         | 4140 | 4145   |                   |             |         |
| Lime-Shells    |       | Hard         | 4145 | 4186   |                   |             |         |
| Slate-Shells   |       |              | 4186 | 4300   |                   |             |         |
| Lime           |       |              | 4300 | 4353   | Gas - Show        | 4345        |         |
| Slate-Shells   |       |              | 4353 | 4396   |                   |             |         |
| Lime           |       |              | 4396 | 4450   |                   |             |         |
| Slate-Shells   |       |              | 4450 | 4500   |                   |             |         |
| Lime           |       |              | 4500 | 4550   |                   |             |         |



*Probably Fractured*

| Formation          | Color                 | Hard or Soft | Top 2 | Bottom   | Oil, Gas or Water | Depth Found | Remarks |
|--------------------|-----------------------|--------------|-------|----------|-------------------|-------------|---------|
| Slate-Shells       |                       |              | 4550  | 4730     |                   |             |         |
| Lime               | Dark                  | Hard         | 4730  | 4787     |                   |             |         |
| Slate-Shells       | Dark                  |              | 4787  | 4904     |                   |             |         |
| Lime               | Dark                  |              | 4904  | 5052     |                   |             |         |
| Slate              | Gray                  |              | 5052  | 5238     |                   |             |         |
| Lime               | Dark                  |              | 5238  | 5300     |                   |             |         |
| Slate              | Dark                  |              | 5300  | 5465     |                   |             |         |
| Silica Stone       | Dark                  |              | 5465  | 5490     | Gas - Show        | 5485        |         |
| Shale              | Black                 | Hard         | 5490  | 5540     | Gas - Show        | 5511        |         |
| Lime               | Dark                  |              | 5540  | 5630     |                   |             |         |
| Shale              | Black-Brown           |              | 5630  | 5880     |                   |             |         |
| Brown Break        | - Tioga metabentonite |              | 5880  | 5884     |                   |             |         |
| Lime - Onondaga    |                       | Cong'l.      | 5884  | 5900     |                   |             |         |
| Chert - Huntsville |                       |              | 5900  | 5990     |                   |             |         |
| Lime-Shells        |                       |              | 5990  | 5994     |                   |             |         |
| Lime (Cherty)      |                       |              | 5994  | 6006     |                   |             |         |
| Slate              | Black                 | Needmore     | 6006  | 6051     |                   |             |         |
| Sand - Oriskany    |                       |              | 6051  | 6266     | Gas               |             |         |
| Heidleberg         | Helderberg Ls.        |              | 6266  | 6276T.D. |                   |             |         |
|                    |                       |              |       | 485      |                   |             |         |
|                    |                       |              | 5884  | 6051     | 6266              |             |         |
|                    |                       |              | 2913  | 2913     | 2913              |             |         |
|                    |                       |              | 2971  | 3138     | 3353              |             |         |

Date....., 19.....

APPROVED....., Owner

By..... (Title)