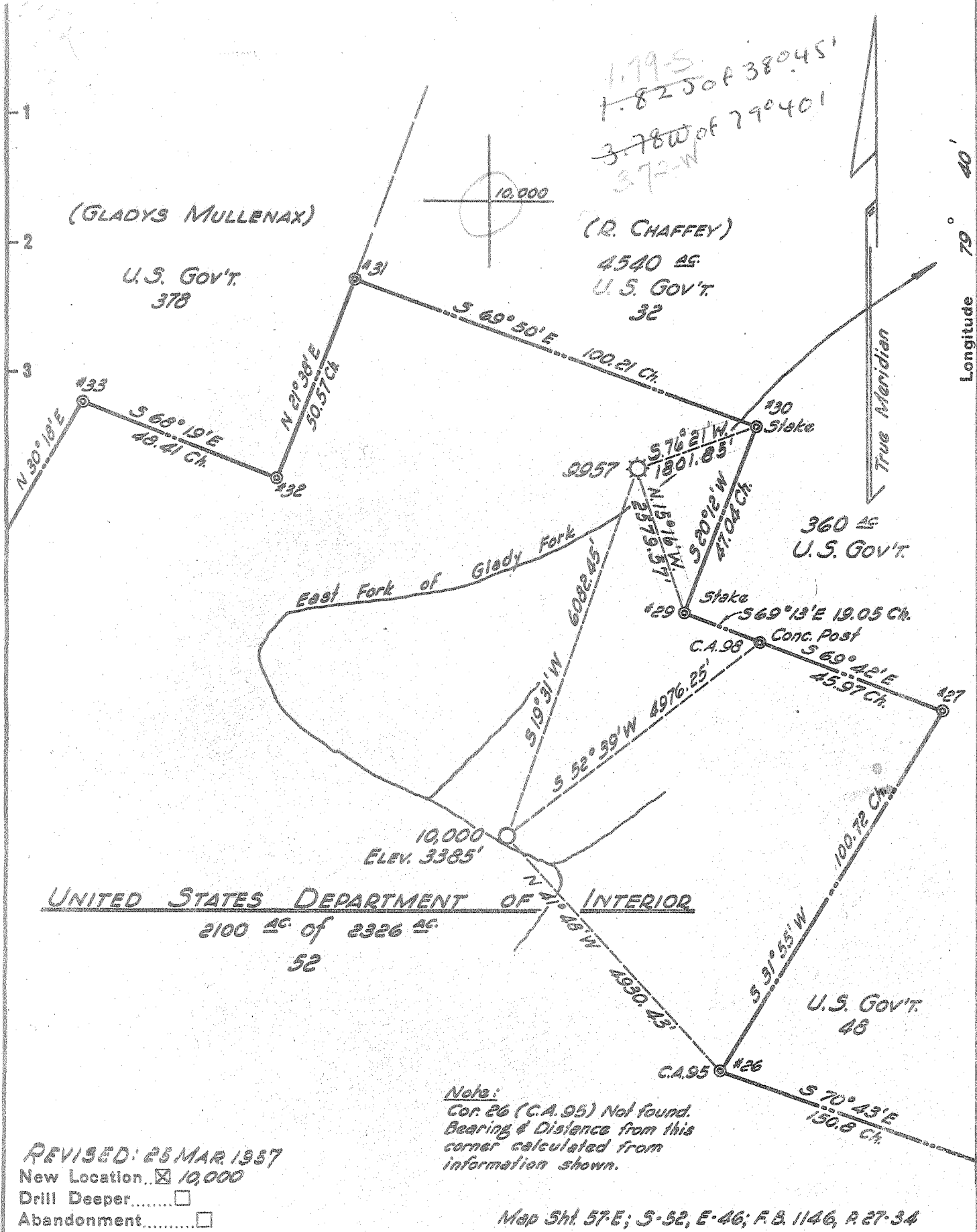


P

Latitude 38° 45'

Longitude 79° 40'



UNITED STATES DEPARTMENT OF INTERIOR  
 2100 AC. of 2326 AC.  
 52

REVISED: 25 MAR 1957  
 New Location  10,000  
 Drill Deeper   
 Abandonment

Note:  
 Cor. 26 (C.A. 95) Not found.  
 Bearing & Distance from this  
 corner calculated from  
 information shown.

Map Sh. 57-E; S-52, E-46; F.B. 1146, P. 27-34

Company HOPE NATURAL GAS CO.  
 Address CLARKSBURG, W. VA.  
 Farm U. S. DEPARTMENT OF INTERIOR  
 Tract \_\_\_\_\_ Acres 2326 Lease No. 62327  
 Well (Farm) No. 1000 Serial No. 10,000  
 Elevation (Spirit Level) 3385'  
 Quadrangle SPRUCE KNOB - NW  
 County RANDOLPH District DRY FORK  
 Engineer Wm Bowers  
 Engineer's Registration No. 900  
 File No. \_\_\_\_\_ Drawing No. \_\_\_\_\_  
 Date MAY 11, 1956 Scale 1" = 2000'

STATE OF WEST VIRGINIA  
 DEPARTMENT OF MINES  
 OIL AND GAS DIVISION  
 CHARLESTON

WELL LOCATION MAP  
 FILE NO. RAN-86

+ Denotes location of well on United States  
 Topographic Maps, scale 1 to 62,500, lati-  
 tude and longitude lines being represented  
 by border lines as shown.  
 - Denotes one inch spaces on border line  
 of original tracing.

6-6 201 Deepwell



STATE OF WEST VIRGINIA  
DEPARTMENT OF MINES  
OIL AND GAS DIVISION

Spruce Knob

WELL RECORD

Permit No. RAN-86

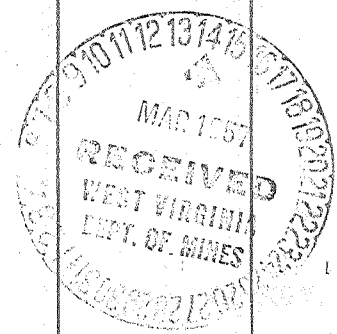
Oil or Gas Well Gas  
(KIND)

Company Hope Natural Gas Company  
Address Clarksburg, W. Va.  
Farm U. S. Dept. of Int. Acres 2326  
Location (waters) \_\_\_\_\_  
Well No. 10000 Elev. 3385'  
District Dry Fork County Randolph  
The surface of tract is owned in fee by \_\_\_\_\_  
Address \_\_\_\_\_  
Mineral rights are owned by \_\_\_\_\_  
Address \_\_\_\_\_  
Drilling commenced June 5, 1956  
Drilling completed Feb. 2, 1957  
Date Shot Not shot From \_\_\_\_\_ To \_\_\_\_\_  
With Fractured  
Open Flow /10ths Water in \_\_\_\_\_ Inch  
\_\_\_\_\_ /10ths Merc. in \_\_\_\_\_ Inch  
Volume 599 M Cu. Ft.  
Rock Pressure 1820# lbs. \_\_\_\_\_ hrs.  
Oil None bbls., 1st 24 hrs.  
Fresh water 50' 360' 790' feet \_\_\_\_\_ feet  
Salt water None feet \_\_\_\_\_ feet

Casing and Tubing	Used in Drilling	Left in Well	Packers
Size			Kind of Packer
16			
18	55	55	
10	466	466	Size of
8 1/4	1665	1665	
6 5/8	5628	5628	Depth set
5 3/16			
3			Perf. top
2			Perf. bottom
Liners Used			Perf. top
			Perf. bottom

CASING CEMENTED SIZE No. Ft. Date  
8" cemented w/60 bags 7" cemented w/60 bags  
COAL WAS ENCOUNTERED AT \_\_\_\_\_ FEET \_\_\_\_\_ INCHES  
No Coal  
FEET \_\_\_\_\_ INCHES FEET \_\_\_\_\_ INCHES  
FEET \_\_\_\_\_ INCHES FEET \_\_\_\_\_ INCHES

Formation	Color	Hard or Soft	Top	Bottom	Oil, Gas or Water	Depth Found	Remarks
Soil			0	10			
Lime Shells			10	315	Water	50'	
Sand			315	385	"	360'	
Slate			385	396			
Sand			396	450			
Lime & Shells			450	680			
Sand			680	740			
Lime			740	810	Water	790	
Slate & Shells			810	895			
Sand			895	915			
Lime Shells			915	945			
Gray Lime			945	1240			
Slate shells			1240	1405			
Lime			1405	1510			
Lime & Shale			1510	1718			
Sand			1718	1740			
Slate			1740	3400			
Lime			3400	3465			
Slate <del>XX</del>			3465	3890			
Lime			3890	4410			
Slate			4410	4700			
Lime			4700	4788			
Slate			4788	5068			
Black Shale			5068	5070	Gas	5068	Pocket
Grey Lime			5070	5125			
Brown Shale			5125	5213			
TULLY LIME			5213	5229			
Brown Shale			5229	5352			
Gray Lime			5352	5373			
Dark Shale			5373	5416			
Gray Lime			5416	5460			
Dark Shale			5460	5500			
Limy Shale			5500	5579			
ONONDAGA			5579	5627			
CHERT			5627	5640			
Shale			5640	5738			
CHERT			5738	5761			
Shale			5761	5834			



(Over)

5579 5834  
3385 3385

Formation	Color	Hard or Soft	Top $\&$	Bottom	Oil, Gas or Water	Depth Found	Remarks
ORISKANY HELDERBERG			5834 6034	6034 6144 6080 6080' <u>485</u>	Gas	5971' to 6014'	✓
	Filled Back to						
	Present total depth						

Date 3-13-57, 19\_\_

APPROVED Hope Natural Gas Company, Owner