

WW-7  
8-30-06



West Virginia Department of Environmental Protection  
Office of Oil and Gas  
**WELL LOCATION FORM: GPS**

API: 47-083-00100 WELL NO.: 7435

FARM NAME: US Dept of Interior

RESPONSIBLE PARTY NAME: Columbia Gas Transmission, LLC

COUNTY: Randolph DISTRICT: Dry Fork

QUADRANGLE: Glady, WV

SURFACE OWNER: US Dept of Interior

ROYALTY OWNER: US Dept of Interior (storage lease)

UTM GPS NORTHING: 4293268.7 m

UTM GPS EASTING: 614544.0 m GPS ELEVATION: 969.3 m (3179.0')

The Responsible Party named above has chosen to submit GPS coordinates in lieu of preparing a new well location plat for a plugging permit or assigned API number on the above well. The Office of Oil and Gas will not accept GPS coordinates that do not meet the following requirements:

1. Datum: NAD 1983, Zone: 17 North, Coordinate Units: meters, Altitude: height above mean sea level (MSL) – meters.
2. Accuracy to Datum – 3.05 meters
3. Data Collection Method:

Survey grade GPS  : Post Processed Differential

Real-Time Differential

Mapping Grade GPS  : Post Processed Differential

Real-Time Differential

4. **Letter size copy of the topography map showing the well location.**

I the undersigned, hereby certify this data is correct to the best of my knowledge and belief and shows all the information required by law and the regulations issued and prescribed by the Office of Oil and Gas.

Signature

Senior Engineer

Title

1/27/15  
Date

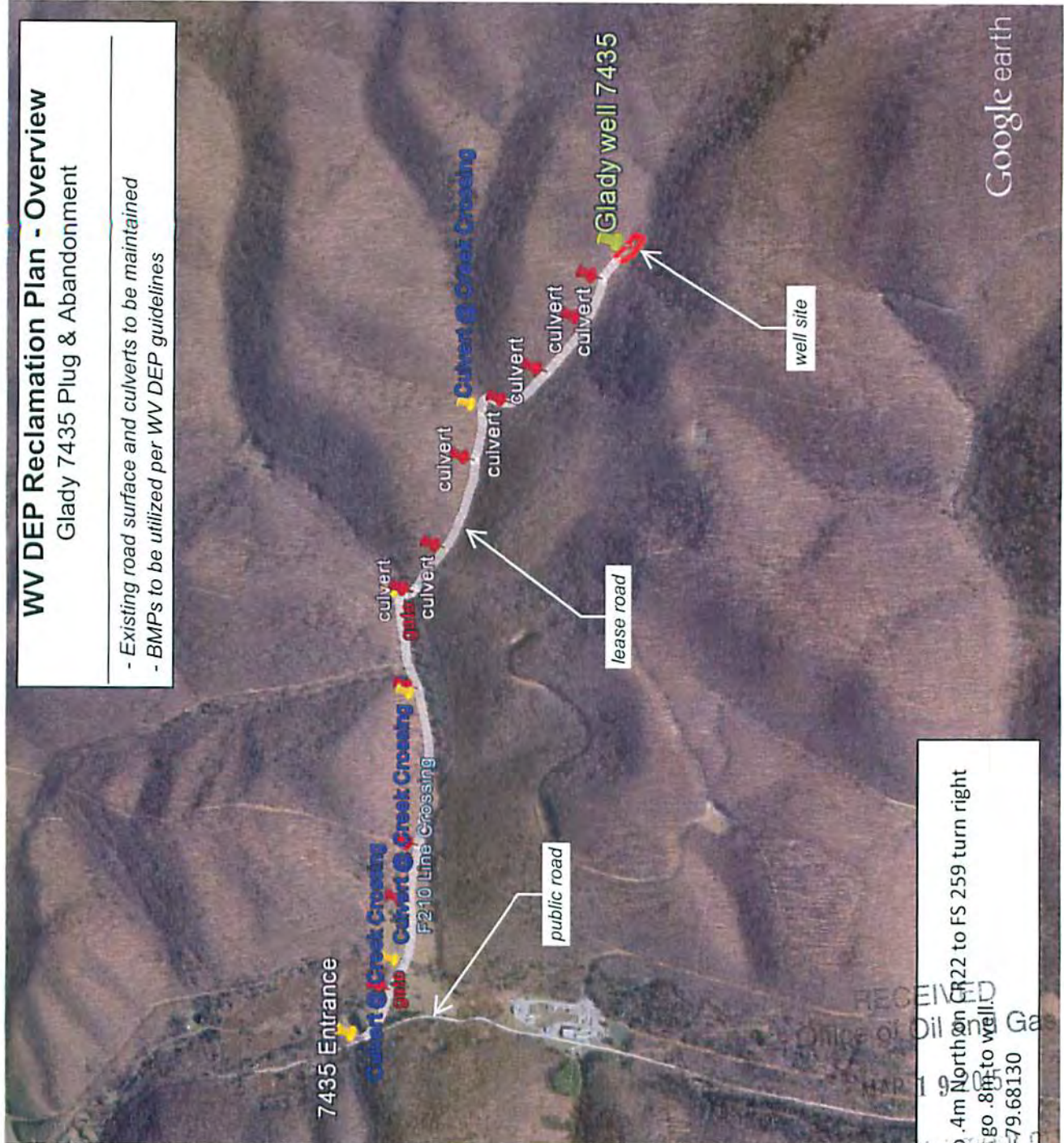




**WV DEP Reclamation Plan - Overview**  
 Glady 7435 Plug & Abandonment

---

- Existing road surface and culverts to be maintained  
 - BMPs to be utilized per WV DEP guidelines



**Directions**  
 From Glady station go .4m North on CR22 to FS 259 turn right  
 go .7m to Y bear right go .8m to well!  
 GPS well-38.780703/-79.681130



Google earth

RECEIVED  
 Office of Oil and Gas  
 MAR 19 2015  
 WV Department of Environmental Protection