

WW-7
8-30-06



West Virginia Department of Environmental Protection
Office of Oil and Gas
WELL LOCATION FORM: GPS

API: 47-083-00104 WELL NO.: 7425

FARM NAME: US Dept of Interior

RESPONSIBLE PARTY NAME: Columbia Gas Transmission, LLC

COUNTY: Randolph DISTRICT: Dry Fork

QUADRANGLE: Bowden, WV

SURFACE OWNER: US Dept of Interior

ROYALTY OWNER: US Dept of Interior (storage lease)

UTM GPS NORTHING: 4303938.8 m

UTM GPS EASTING: 618395.6 m GPS ELEVATION: 975.5 m (3200')

The Responsible Party named above has chosen to submit GPS coordinates in lieu of preparing a new well location plat for a plugging permit or assigned API number on the above well. The Office of Oil and Gas will not accept GPS coordinates that do not meet the following requirements:

1. Datum: NAD 1983, Zone: 17 North, Coordinate Units: meters, Altitude: height above mean sea level (MSL) – meters.
2. Accuracy to Datum – 3.05 meters
3. Data Collection Method:
Survey grade GPS : Post Processed Differential

Real-Time Differential

Mapping Grade GPS : Post Processed Differential

Real-Time Differential

4. **Letter size copy of the topography map showing the well location.**

I the undersigned, hereby certify this data is correct to the best of my knowledge and belief and shows all the information required by law and the regulations issued and prescribed by the Office of Oil and Gas.

James E. Cima
Signature

Senior Engineer
Title

1/27/15
Date



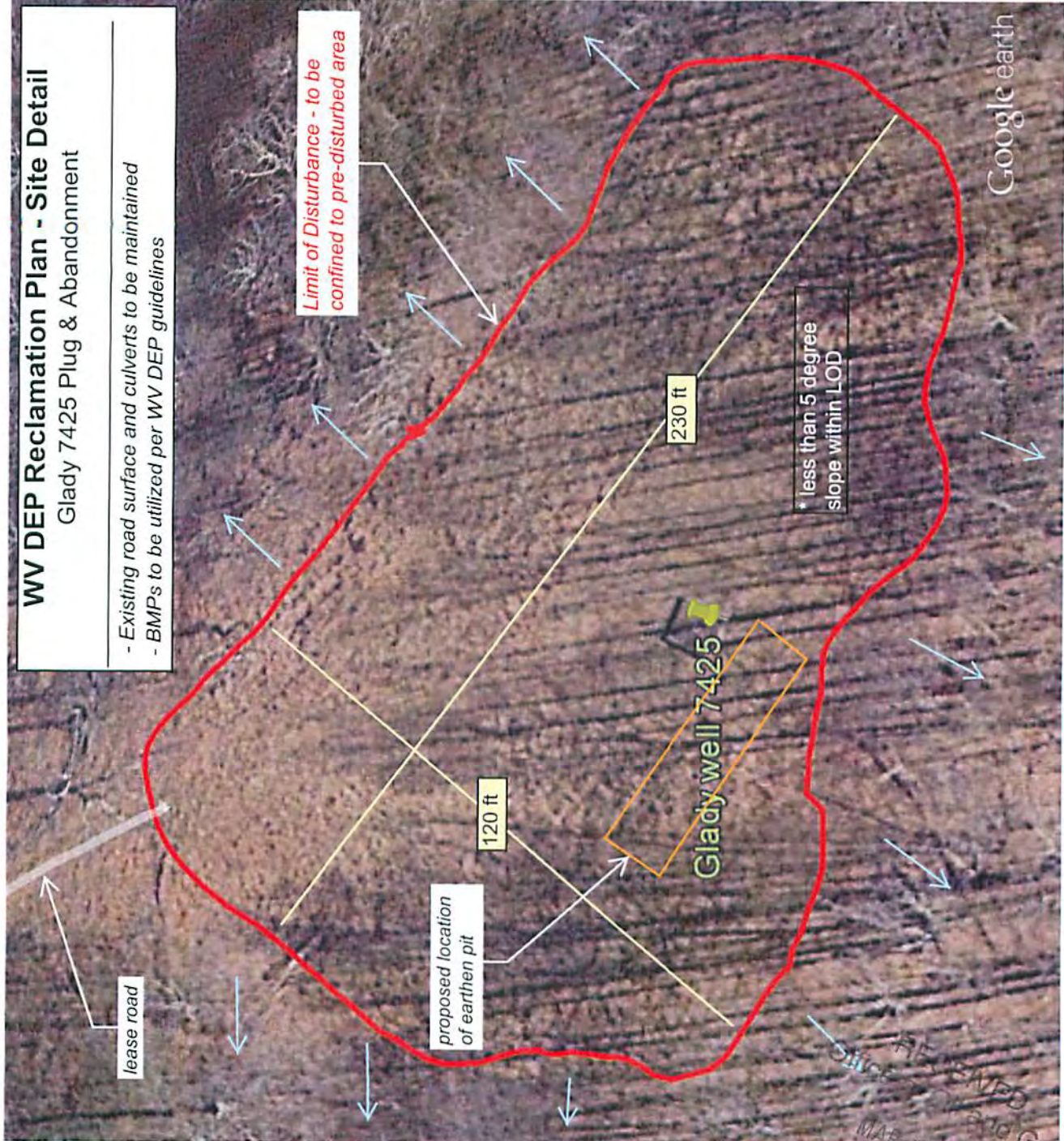
WV DEP Reclamation Plan - Site Detail

Glady 7425 Plug & Abandonment

- Existing road surface and culverts to be maintained
- BMPs to be utilized per WV DEP guidelines

Limit of Disturbance - to be confined to pre-disturbed area

* less than 5 degree slope within LOD



Google earth



RECEIVED
Oil, Gas and Gas
MAR 19 2015
WV Department of
Environmental Protection