

WW-7  
8-30-06



West Virginia Department of Environmental Protection  
Office of Oil and Gas

**WELL LOCATION FORM: GPS**

API: 47-083-00109 WELL NO.: Glady 7427

FARM NAME: Monongia National Forest

RESPONSIBLE PARTY NAME: Columbia Gas Transmission, LLC

COUNTY: Randolph DISTRICT: Dry Fork

QUADRANGLE: Glady, WV

SURFACE OWNER: US Dept of Interior (managed by USFS)

ROYALTY OWNER: US Dept of Interior (storage lease)

UTM GPS NORTHING: 4300373.163 m (3224')

UTM GPS EASTING: 616739.976 m GPS ELEVATION: 982.842m

The Responsible Party named above has chosen to submit GPS coordinates in lieu of preparing a new well location plat for a plugging permit or assigned API number on the above well. The Office of Oil and Gas will not accept GPS coordinates that do not meet the following requirements:

- Datum: NAD 1983, Zone: 17 North, Coordinate Units: meters, Altitude: height above mean sea level (MSL) – meters.
- Accuracy to Datum – 3.05 meters
- Data Collection Method:

Survey grade GPS  : Post Processed Differential

Real-Time Differential

Mapping Grade GPS  : Post Processed Differential

Real-Time Differential

- Letter size copy of the topography map showing the well location.**

I the undersigned, hereby certify this data is correct to the best of my knowledge and belief and shows all the information required by law and the regulations issued and prescribed by the Office of Oil and Gas.

[Signature]  
Signature

Wells Engineer STS  
Title

09/20/2022  
Date

RECEIVED  
Office of Oil and Gas  
OCT 05 2022  
WV Department of  
Environment

(ELKINS)



4708300109P

GLADY QUADRANGLE  
WEST VIRGINIA  
TOPOGRAPHIC SERIES

(HARMAN)

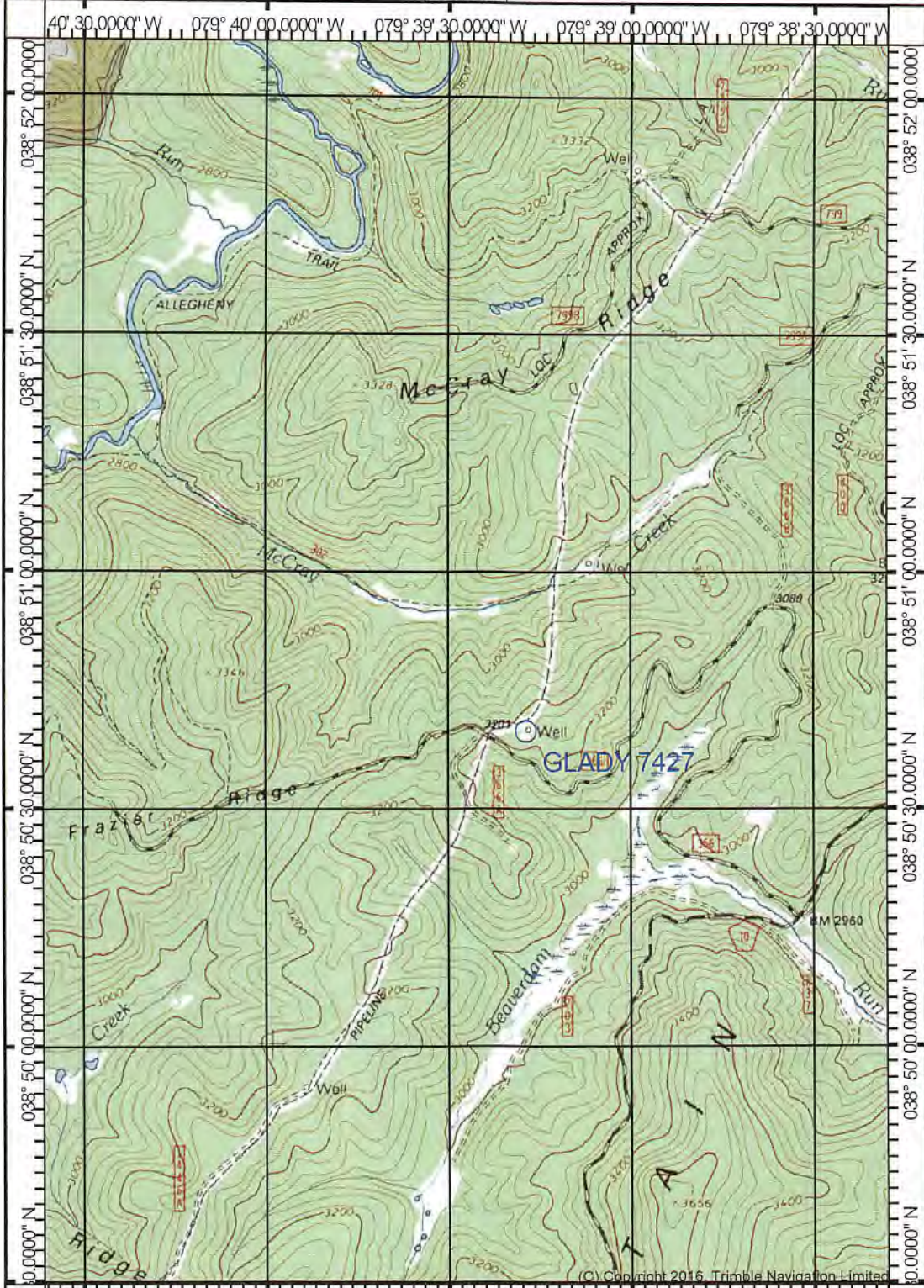
079° 40' 36.6057" W  
038° 52' 06.9111" N

(BOWDEN)

079° 38' 17.3024" W  
038° 52' 06.9111" N

(BEVERLY EAST)

(WHITMER)



(C) Copyright 2016, Trimble Navigation Limited

038° 49' 29.1327" N  
079° 40' 36.6057" W

(SINKS OF GANDY)  
SCALE 1:24000

Printed: Tue May 24, 2022

038° 49' 29.1327" N  
079° 38' 17.3024" W

(WILDELL)

(SPRUCE KNOB)

Produced by Trimble Terrain Navigator Pro  
Topography based on USGS 1:24,000  
Maps

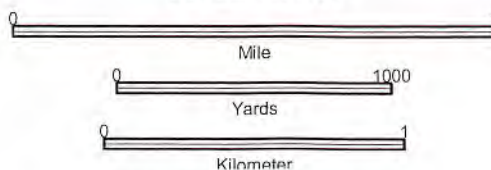
North American 1983 Datum (NAD83)

To place on the predicted North American  
1927 move the projection lines 12M N and  
19M E

Declination



GN 0.84° E  
MN 9.14° W



CONTOUR INTERVAL 40 FT

38079-G5-TM-024  
GLADY, WV  
JAN 1, 1998

12/23/2022