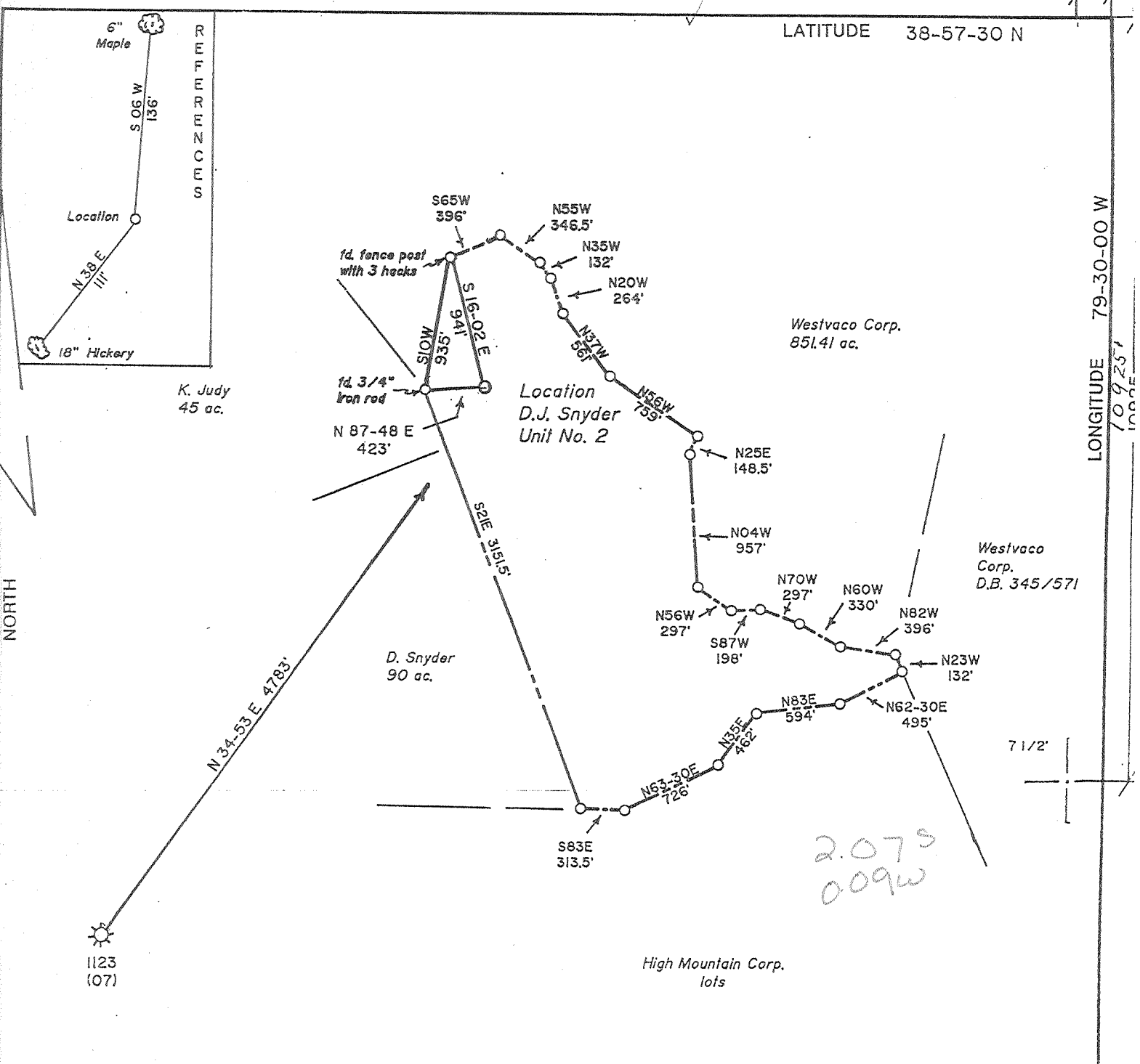


LATITUDE 38-57-30 N

LONGITUDE 79-30-00 W



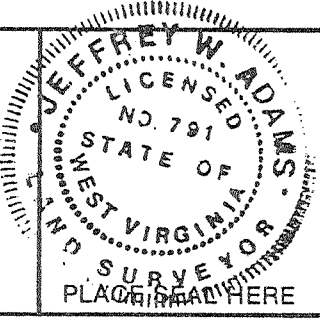
Note: All wells within 3000' of this location are shown on this plat.

Note: Location is at least 400' from all outside lease lines.

(+) DENOTES LOCATION OF WELL ON UNITED STATES TOPOGRAPHIC MAPS

FILE NO. \_\_\_\_\_  
 DRAWING NO. 1  
 SCALE 1" = 1000'  
 MINIMUM DEGREE OF ACCURACY 1 in 200  
 PROVEN SOURCE OF ELEVATION Road Intersection 5334' SW of Location: elev: 2514'

I THE UNDERSIGNED, HEREBY CERTIFY THAT THIS PLAT IS CORRECT TO THE BEST OF MY KNOWLEDGE AND BELIEF AND SHOWS ALL THE INFORMATION REQUIRED BY LAW AND THE REGULATIONS ISSUED AND PRESCRIBED BY THE DEPARTMENT OF ENERGY  
 (SIGNED) Jeffrey W. Adams  
 R.P.E. \_\_\_\_\_ L.L.S. 791



STATE OF WEST VIRGINIA  
 Division of Environmental Protection  
 OFFICE OF OIL AND GAS

DATE December 9, 19 98  
 OPERATOR'S WELL NO. D. J. Snyder  
 API WELL NO. Unit No. 2  
47 - 083 - 01158  
 STATE COUNTY PERMIT

WELL TYPE: OIL \_\_\_ GAS X LIQUID INJECTION \_\_\_ WASTE DISPOSAL \_\_\_  
 (IF "GAS,") PRODUCTION \_\_\_ STORAGE X DEEP \_\_\_ SHALLOW \_\_\_

LOCATION: ELEVATION 3317 WATERSHED Spruce Run  
 DISTRICT Dry Fork COUNTY Randolph  
 QUADRANGLE Harman 7 1/2'

SURFACE OWNER Doris J. Snyder ACREAGE 121  
 OIL & GAS ROYALTY OWNER Doris J. Snyder LEASE ACREAGE 294  
 LEASE NO. 04065-00

PROPOSED WORK: DRILL X CONVERT \_\_\_ DRILL DEEPER \_\_\_ REDRILL \_\_\_ FRACTURE OR STIMULATE X PLUG OFF OLD FORMATION \_\_\_ PERFORATE NEW FORMATION \_\_\_ OTHER PHYSICAL CHANGE IN WELL (SPECIFY) 6-6 374

PLUG AND ABANDON \_\_\_ CLEAN OUT AND REPLUG \_\_\_

TARGET FORMATION Oriskany ESTIMATED DEPTH 8750

WELL OPERATOR Ardent Resources, Inc. DESIGNATED AGENT R. Edward Hart  
 ADDRESS P.O. Box 8 Bethel Park, PA 15102-0008 ADDRESS 1120 Kanawha Blvd. East Charleston, WV 25301

DEEP WELL

COUNTY NAME RAN PERMIT 1158

2.075  
009w

7 1/2'

Westvaco Corp. D.B. 345/571

Westvaco Corp. 851.41 ac.

High Mountain Corp. lots

D. Snyder 90 ac.

K. Judy 45 ac.

NORTH

REFERENCE

6" Maple

Location

18" Hickory

1123 (07)

WR-35

83-1158

19-Feb-99

API 17 83-1158 RECEIVED

MAY 08 2000

State of West Virginia  
Division of Environmental Protection  
Section of Oil and Gas  
Well Operator's Report of Well Work

WV Oil and Gas  
Conservation Commission

Farm name: SNYDER, DORIS J

Operator Well No.:

LOCATION: Elevation: 3,317.00 Quadrangle: HARMAN

District: DRY FORK

County: RANDOLPH

Latitude: 10925 Feet South of 38 Deg. 57Min. 30 Sec.

Longitude 525 Feet West of 79 Deg. 30 Min. 0 Sec.

Company: ARDENT RESOURCES, INC.  
P. O. BOX 8  
BETHEL PARK, PA 15102-0008

Agent: EDWARD HART

Inspector: PHILLIP TRACY  
Permit Issued: 02/19/99  
Well work Commenced: 08/19/99  
Well work Completed: 09/03/99  
Verbal Plugging \_\_\_\_\_  
Permission granted on: \_\_\_\_\_  
Rotary x Cable \_\_\_\_\_ Rig \_\_\_\_\_  
Total Depth (feet) 8543'  
Fresh water depths (ft) \_\_\_\_\_  
Damp @ 140' 1/2" @ 1300'  
Salt water depths (ft) \_\_\_\_\_  
Is coal being mined in area (Y/N)? N  
Coal Depths (ft): \_\_\_\_\_

Casing & Tubing Size	Used in Drilling	Left in Well	Cement Fill Up Cu. Ft.
20"	16'	16'	10 sx
9 5/8"	2682'	2682'	840 sx
4 1/2"	-	8512'	360 sx
2 3/8"	-	8125'	-

OPEN FLOW DATA

Producing formation Huntersville/Oriskany Pay zone depth (ft) 8146' to 8346'  
Gas: Initial open flow 1,000 MCF/d Oil: Initial open flow \_\_\_\_\_ Bbl/d  
Final open flow 7,487 MCF/d Final open flow \_\_\_\_\_ Bbl/d  
Time of open flow between initial and final tests \_\_\_\_\_ Hours  
Static rock Pressure 2625 psig (surface pressure) after 41 Hours

Second producing formation \_\_\_\_\_ Pay zone depth (ft) \_\_\_\_\_  
Gas: Initial open flow \_\_\_\_\_ MCF/d Oil: Initial open flow \_\_\_\_\_ Bbl/d  
Final open flow \_\_\_\_\_ MCF/d Final open flow \_\_\_\_\_ Bbl/d  
Time of open flow between initial and final tests \_\_\_\_\_ Hours  
Static rock Pressure \_\_\_\_\_ psig (surface pressure) after \_\_\_\_\_ Hours

NOTE: ON BACK OF THIS FORM PUT THE FOLLOWING: 1). DETAILS OF PERFORATED INTERVALS, FRACTURING OR STIMULATING, PHYSICAL CHANGE, ETC. 2). THE WELL LOG WHICH IS A SYSTEMATIC DETAILED GEOLOGICAL RECORD OF ALL FORMATIONS, INCLUDING COAL ENCOUNTERED BY THE WELLBORE.

For: ARDENT RESOURCES, INC.  
By: Edward Hart  
Date: 04/18/00

MAY 9 2000

RAW  
83-1158

DETAILS OF PERFORATED INTERVALS, FRACTURING OR STIMULATING, PHYSICAL CHANGE, ETC.

9/13/99 - Perforated Oriskany @ 8336' to 8346' with 40 holes and @ 8228' to 8234' with 18 holes.

Perforated Huntersville @ 8145' to 8152' with 21 holes.

9/15/99 - Acidize Huntersville and Oriskany with 5000 gals 20% HCL and 5000 gals 10% HCL. BDP 3805 psig.

ATR 5.8 bpm, ATP 4800 psig ISIP 3682 psig.

WELL LOG

FORMATION	COLOR	HARD OR SOFT	TOP FEET	BOTTOM FEET	REMARKS
					Including indication of all fresh and salt water, coal, oil and gas
Shale			Surface	250	Damp @ 140'
Lime and Shale			250	800	
Shale and Sand			800	1300	
Sand and Shale			1300	2430	1/2" stream @ 1300'
Shale			2430	2920	
Shale and Sand			2920	3360	
Sand (Speechley)			3360	3500	
Shale			3500	4200	
Shale and Sand			4200	4470	
Shale			4470	4610	
Siltstone			4610	5050	
Shale			5050	6790	
Siltstone			6790	6840	
Shale			6840	7060	
Siltstone			7060	7090	
Shale			7090	7730	
Lime (Tully)			7730	7760	
Shale			7760	7950	
Shale (Marcellus)			7950	8000	
Lime			8000	8050	
Shale (Marcellus)			8050	8110	
Lime (Onondaga)			8110	8145	
Chert (Huntersville)			8145	8190	Gas @ 8146'
Shale (Needmore)			8190	8214	
Sand (Oriskany)			8214	8450	Gas @ 8224' and 8336'
Lime (Helderberg)			8450	Total Depth	

(Attach separate sheets as necessary)

Ardent Resources, Inc.  
Well Operator

By: Terry J. Haul

Date: 04-18-00

Note: Regulation 2.02(i) provides as follows:

"The term 'log' or 'well log' shall mean a systematic detailed geological record of all formations, including coal, encountered in the drilling of a well."