

**WESTVACO LEASE**  
**P/O 2058.09 ACRES±**  
**WELL # 2**  
**REVISED**

UNITED STATES FOREST SERVICE  
 O 47-083-1155

WESTVACO # 2  
 REVISED

WESTVACO CORP.  
 851.848 ACRES±  
 (SURFACE)

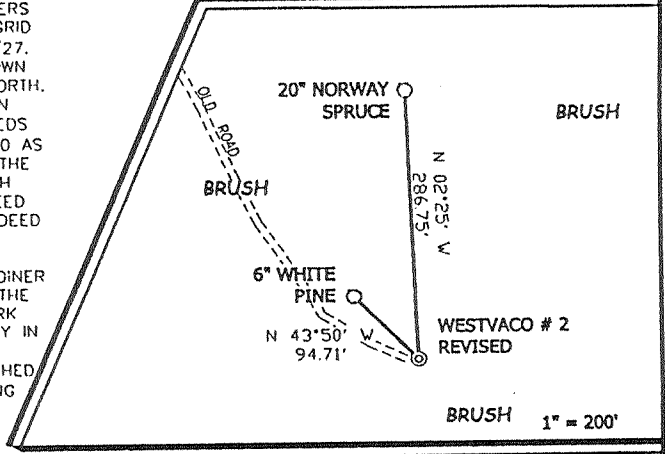
WESTVACO CORP.  
 942 ACRES±  
 (SURFACE)

THERE APPEARS TO BE NO PERMITTED WELLS WITHIN 3000'

**NOTES ON SURVEY**

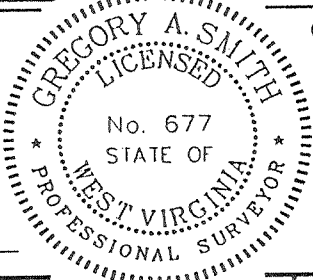
1. TIES TO WELLS AND CORNERS ARE BASED ON STATE PLANE GRID NORTH WV NORTH ZONE NAD '27.
2. TIES TO REFERENCES SHOWN HEREON ARE BASED ON GRID NORTH.
3. LEASE BOUNDARY SHOWN HEREON TAKEN FROM TWO DEEDS DATED 09/29/81 AND 12/12/80 AS RECORDED IN THE OFFICE OF THE COUNTY CLERK OF RANDOLPH COUNTY, WEST VIRGINIA, IN DEED BOOK 340 ON PAGE 678 AND DEED BOOK 335 ON PAGE 1, RESPECTIVELY.
4. SURFACE OWNERS AND ADJOINER INFORMATION OBTAINED FROM THE ASSESSOR AND COUNTY CLERK RECORDS OF RANDOLPH COUNTY IN FEBRUARY, 1998.
5. WELL LAT./LONG. ESTABLISHED BY DGPS (SUBMETER MAPPING GRADE).

**REFERENCES**



I THE UNDERSIGNED, HEREBY CERTIFY THAT THIS PLAT IS CORRECT TO THE BEST OF MY KNOWLEDGE AND BELIEF AND SHOWS ALL THE INFORMATION REQUIRED BY LAW AND THE REGULATIONS ISSUED AND PRESCRIBED BY THE DEPARTMENT OF ENERGY.


P.S. 677 *Gregory A. Smith*



(+) DENOTES LOCATION OF WELL ON UNITED STATES TOPOGRAPHIC MAPS.  
 DATE MARCH 15, 19 99  
 OPERATORS WELL NO. WESTVACO # 2 R  
REVISED  
 API WELL NO. 47-083 01168  
 STATE COUNTY PERMIT

MINIMUM DEGREE OF ACCURACY 1 / 200 FILE NO. 4151P2R (73-15)  
 PROVEN SOURCE OF ELEVATION JUNCTION OF ROADS ELEVATION 2743' SCALE 1" = 2000'

STATE OF WEST VIRGINIA  
 DIVISION OF ENVIRONMENTAL PROTECTION  
 OFFICE OF OIL AND GAS



WELL TYPE : OIL  GAS  INJECTION  WASTE DISPOSAL  "GAS" PRODUCTION  STORAGE  DEEP  SHALLOW

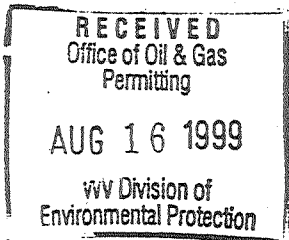
LOCATION :  
 ELEVATION 4136' WATERSHED BIG RUN OF RED CREEK  
 DISTRICT DRY FORK COUNTY RANDOLPH QUADRANGLE LANEVILLE 7.5'

SURFACE OWNER WESTVACO CORPORATION ET AL ACREAGE 942  
 ROYALTY OWNER WESTVACO CORPORATION ET AL LEASE ACREAGE 942 OF 2058.09  
 PROPOSED WORK : LEASE NO. 47-10828AC  
 DRILL  CONVERT  DRILL DEEPER  REDRILL  FRACTURE OR STIMULATE  PLUG OFF OLD FORMATION   
 PERFORATE NEW FORMATION  PLUG AND ABANDON  CLEAN OUT AND REPLUG  OTHER   
 PHYSICAL CHANGE IN WELL (SPECIFY) \_\_\_\_\_ TARGET FORMATION ORISKANY  
 ESTIMATED DEPTH 9,600'

WELL OPERATOR CABOT OIL & GAS CORP. DESIGNATED AGENT JOHN ABSHIRE  
 ADDRESS RT. 3 BOX 583 CLARKSBURG, WV 26301 ADDRESS P.O. BOX 454 GLASGOW, WV 25086

DEEP WELL 1-0 000

WR-35



Date: 11-Aug-99  
API # 47-083-01168

State of West Virginia  
Division of Environmental Protection  
Section of Oil and Gas  
Well Operator's Report of Well Work

Reviewed \_\_\_\_\_

Farm name: Westvaco Corp.

Operator Well No.: Westvaco #2R

LOCATION: Elevation: 4,136'      Quadrangle: Laneville  
District: Dry Fork      County: Randolph  
Latitude: 9,380 feet South of 38 DEG. 51 MIN. 30 SEC.  
Longitude: 2,980 feet West of 79 DEG. 27 MIN. 30 SEC.

Company: Cabot Oil & Gas Corporation  
400 Fairway Drive: Suite 400  
Coraopolis, PA 15108-4308

Casing & Tubing Size	Used in Drilling	Left in Well	Cement Fill up Cu. Ft.
13-3/8"	36'	36'	5 sks
9-5/8"	2277'	2277'	717 sks Class "A"

Agent: John Abshire  
Inspector: Craig Duckworth  
Permit Issued: 5/21/99  
Well Work Commenced: 7/1/99  
Well Work Completed: 7/23/99  
Verbal Plugging  
Permission granted on: \_\_\_\_\_  
Rotary  Cable \_\_\_\_\_  
Total Depth (feet) 9552'  
Fresh Water Depths (ft) 148'  
Salt Water Depths (ft) \_\_\_\_\_

Is coal being mined in area (Y / N)? \_\_\_\_\_  
Coal Depths (ft) \_\_\_\_\_

\* PLUGGED & ABANDONED UNDER CONTINUOUS OPERATION

OPEN FLOW DATA

Producing formation \_\_\_\_\_ Pay zone depth (ft) \_\_\_\_\_  
Gas: Initial open flow \_\_\_\_\_ MCF/d      Oil: Initial open flow \_\_\_\_\_ Bbl/d  
Final open flow \_\_\_\_\_ MCF/d      Final open flow \_\_\_\_\_ Bbl/d  
Time of open flow between initial and final tests \_\_\_\_\_ Hours  
Static rock pressure \_\_\_\_\_ psig (surface pressure after \_\_\_\_\_ Hours

Second producing formation \_\_\_\_\_ Pay zone depth (ft) \_\_\_\_\_  
Gas: Initial open flow \_\_\_\_\_ MCF/d      Oil: Initial open flow \_\_\_\_\_ Bbl/d  
Final open flow \_\_\_\_\_ MCF/d      Final open flow \_\_\_\_\_ Bbl/d  
Time of open flow between initial and final tests \_\_\_\_\_ Hours  
Static rock pressure \_\_\_\_\_ psig (surface pressure after \_\_\_\_\_ Hours

NOTE: ON BACK OF THIS FORM PUT THE FOLLOWING: 1). DETAILS OF PERFORATED INTERVALS, FRACTURING OR STIMULATING, PHYSICAL CHANGE, ETC. 2). THE WELL LOG WHICH IS A SYSTEMATIC DETAILED GEOLOGICAL RECORD OF ALL FORMATIONS, INCLUDING COAL ENCOUNTERED BY THE WELLBORE.

For: CABOT OIL & GAS CORPORATION

By: Ray Rudnick, Jr.  
Date: 08-12-99

AUG 23 1999

RAN 1108

OPEN FLOW DATA

FORMATION	TOP	BOTTOM	REMARKS
KB	0	15	
Sand/Shale	15	3040	
Shale/Sand	3040	3520	
Sand/Shale	3520	4083	
Shale/Sand	4083	5558	
Shale/Silt	5558	7569	
Sand	7569	7628	
Shale	7628	8640	
Tully	8640	8664	
Shale/Lime	8664	8923	
Upper Marcellus	8923	8968	
Purcell	8968	9030	
Lower Marcellus	9030	9079	
Onondaga	9079	9131	
Huntersville	9131	9170	
Needmore	9170	9193	
Oriskany	9193	9427	
Helderberg	9427	9552 - TD	