

LATITUDE 39° 05'

LONGITUDE 81° 00'

SAFARH MC COFMICK  
20 A

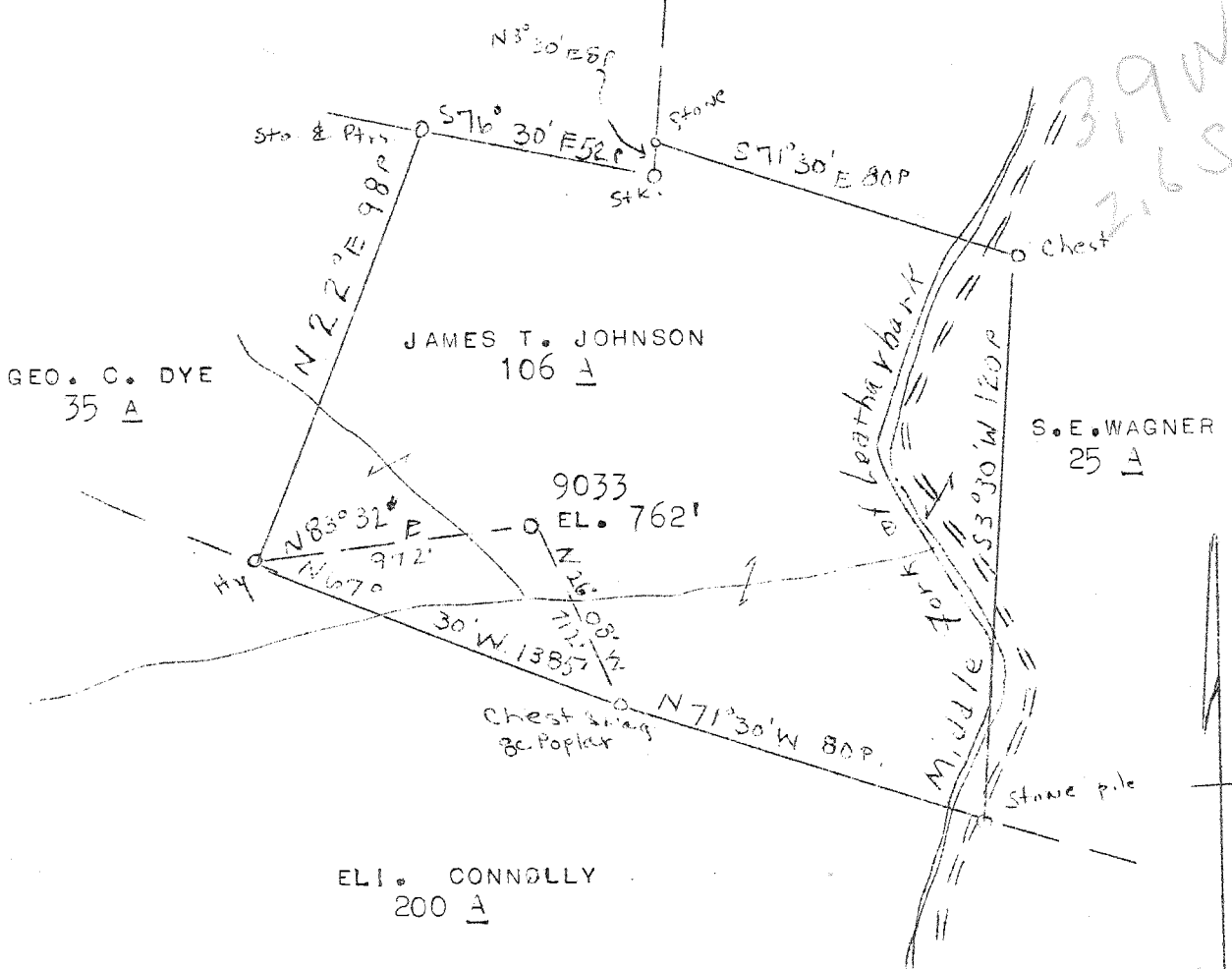
R. W. STEWART  
45 A

GEO. C. DYE  
35 A

JAMES T. JOHNSON  
106 A

S. E. WAGNER  
25 A

ELI. CONNOLLY  
200 A



NEW LOCATION X  
DRILL DEEPR  
ABANDONMENT

MAP SH. 88 -SQ. 527-W-26-FB797 P-27-28

COMPANY HOPE NATURAL GAS CO.  
 ADDRESS CLARKSBURG, W. VA.  
 FARM JAMES T. JOHNSON  
 TRACT ACRES 106 LEASE NO. 55162  
 WELL (FARM) NO.        SERIAL NO. 9033  
 ELEVATION (SPIRIT LEVEL) 762'  
 QUADRANGLE HARRISVILLE - SE  
 COUNTY FITCHIE DISTRICT MURPHY  
 ENGINEER W. M. BOWERS  
 ENGINEER'S REGISTRATION NO. 900  
 FILE NO.        DRAWING NO.         
 DATE 3-13-46 SCALE 1" - 40 POLES

STATE OF WEST VIRGINIA  
DEPARTMENT OF MINES  
OIL AND GAS DIVISION  
CHARLESTON

WELL LOCATION MAP

FILE NO. RIT - 1110

+ DENOTES LOCATION OF WELL ON UNITED STATES TOPOGRAPHIC MAPS, SCALE 1 TO 62,500, LATITUDE AND LONGITUDE LINE BEING REPRESENTED BY BORDER LINES AS SHOWN.

- DENOTES ONE INCH SPACES ON BORDER LINE OF ORIGINAL TRACING.