

WW-7
8-30-06

RECEIVED
Office of Oil and Gas

NOV 22 2017

WV Department of
Environmental Protection



West Virginia Department of Environmental Protection
Office of Oil and Gas
WELL LOCATION FORM: GPS

API: 47-085-03992 **WELL NO.:** WV 604822 (Campbell #4822)

FARM NAME: J. M. Campbell

RESPONSIBLE PARTY NAME: EQT Production Company

COUNTY: Ritchie **DISTRICT:** Union

QUADRANGLE: Oxford 7.5'

SURFACE OWNER: Craig and Amy Williams

ROYALTY OWNER: Craig H. Williams, et al.

UTM GPS NORTHING: 4330944

UTM GPS EASTING: 513369 **GPS ELEVATION:** 337 m (1107 ft)

The Responsible Party named above has chosen to submit GPS coordinates in lieu of preparing a new well location plat for a plugging permit or assigned API number on the above well. The Office of Oil and Gas will not accept GPS coordinates that do not meet the following requirements:

- Datum: NAD 1983, Zone: 17 North, Coordinate Units: meters, Altitude: height above mean sea level (MSL) – meters.
- Accuracy to Datum – 3.05 meters
- Data Collection Method:

Survey grade GPS _____ : Post Processed Differential _____
Real-Time Differential _____

Mapping Grade GPS X : Post Processed Differential X
Real-Time Differential _____

- Letter size copy of the topography map showing the well location.**

I the undersigned, hereby certify this data is correct to the best of my knowledge and belief and shows all the information required by law and the regulations issued and prescribed by the Office of Oil and Gas.


Signature

PS# 2180
Title

10/27/17
Date

Topo Quad: Oxford 7.5'

Scale: 1" = 2000'

RECEIVED
Office of Oil and Gas

County: Ritchie

Date: October 12, 2017

NOV 22 2017

District: Union

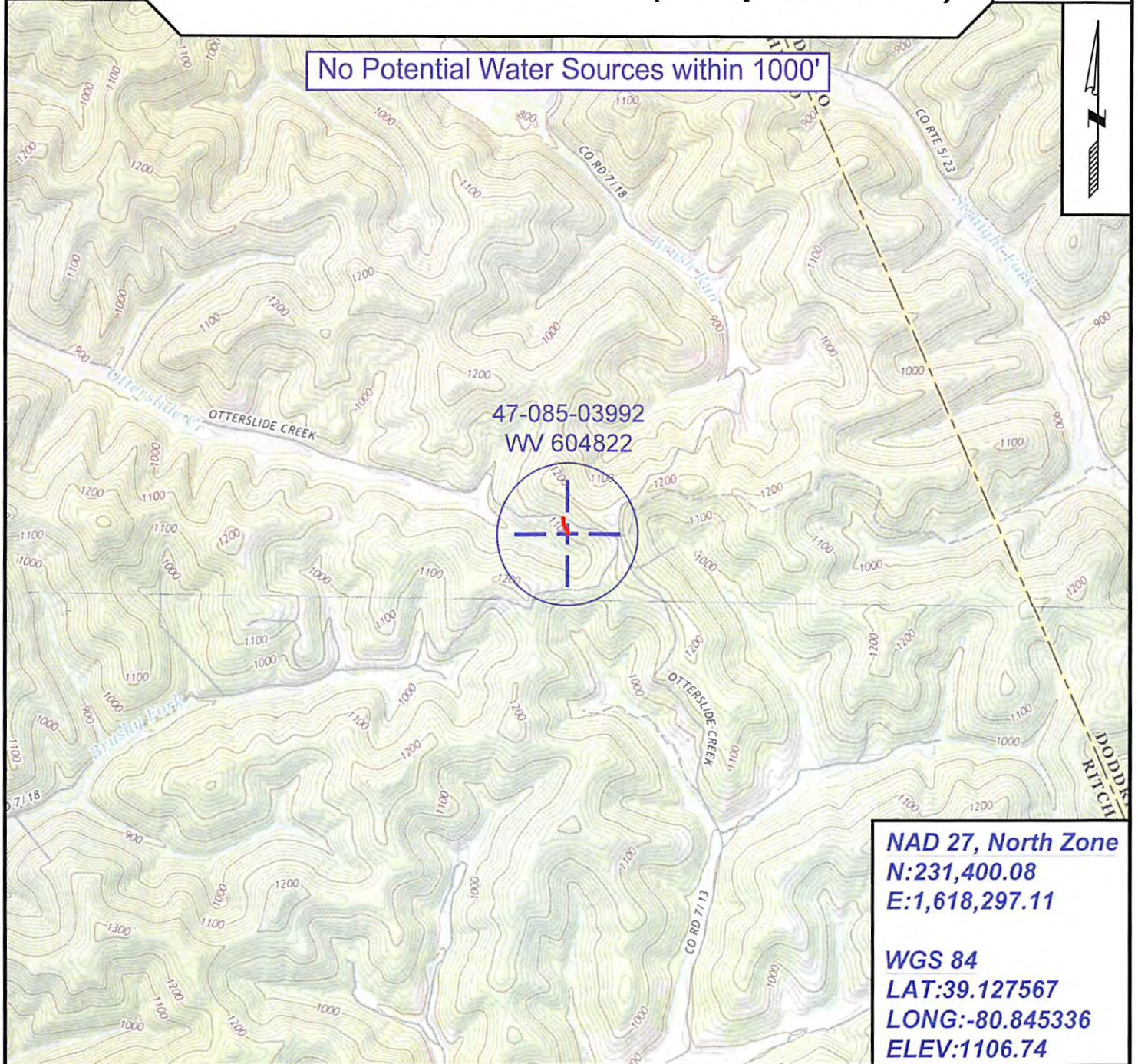
Project No: 68-38-00-08

WV Department of
Environmental Protection

Water

47-085-03992 WV 604822 (Campbell #4822)

No Potential Water Sources within 1000'



NAD 27, North Zone
N:231,400.08
E:1,618,297.11

WGS 84
LAT:39.127567
LONG:-80.845336
ELEV:1106.74



SURVEYING AND MAPPING SERVICES PERFORMED BY:

ALLEGHENY SURVEYS, INC.

1-800-482-8606
237 Birch River Road
Birch River, WV 26610
PH: (304) 649-8606
FAX: (304) 649-8608

PREPARED FOR:

EQT Production Company

P.O. Box 280
Bridgeport, WV 26330