

WW-7
8-30-06



West Virginia Department of Environmental Protection
Office of Oil and Gas
WELL LOCATION FORM: GPS

API: 47-085-09636 WELL NO.: A Hall 2

FARM NAME: Russell E. Fox, Sr., Et Ux

RESPONSIBLE PARTY NAME: Noble Energy, Inc.

COUNTY: Ritchie 85 DISTRICT: Clay 1

QUADRANGLE: Ellenboro 337

Received

SURFACE OWNER: Russell E. Fox, Sr., Et Ux

JUN 18 2014

ROYALTY OWNER: _____

UTM GPS NORTHING: 4352811.233 Meters

Office of Oil and Gas
WV Dept. of Environmental Protection

UTM GPS EASTING: 498684.188 Meters GPS ELEVATION: 250.78 Meters 822.6 FT

The Responsible Party named above has chosen to submit GPS coordinates in lieu of preparing a new well location plat for a plugging permit or assigned API number on the above well. The Office of Oil and Gas will not accept GPS coordinates that do not meet the following requirements:

- Datum: NAD 1983, Zone: 17 North, Coordinate Units: meters, Altitude: height above mean sea level (MSL) – meters.
- Accuracy to Datum – 3.05 meters
- Data Collection Method:

Survey grade GPS : Post Processed Differential _____

Real-Time Differential

Mapping Grade GPS _____ : Post Processed Differential _____

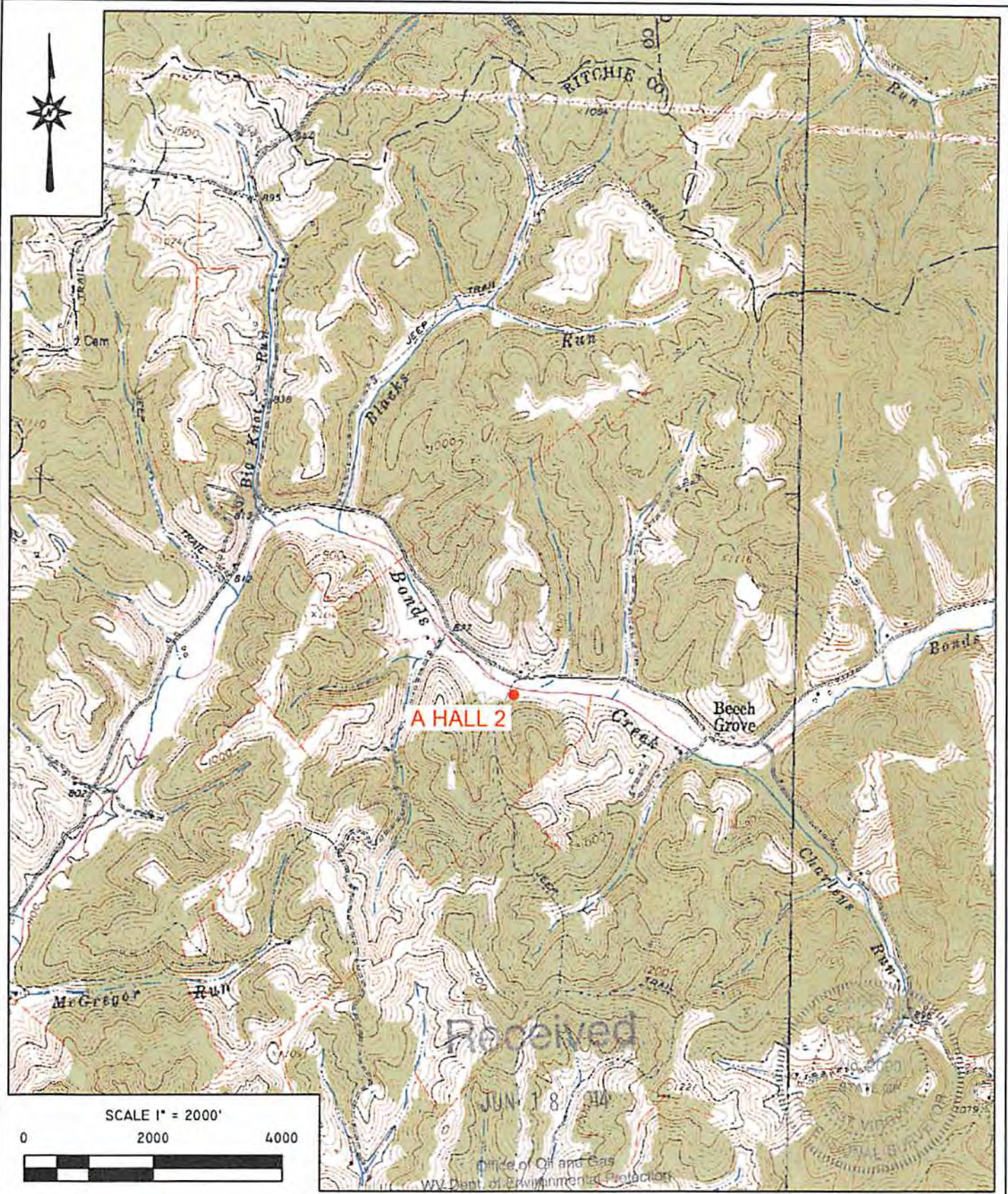
Real-Time Differential _____

- Letter size copy of the topography map showing the well location.

I the undersigned, hereby certify this data is correct to the best of my knowledge and belief and shows all the information required by law and the regulations issued and prescribed by the Office of Oil and Gas.

George D. Six Professional Surveyor 6-12-14
Signature Title Date





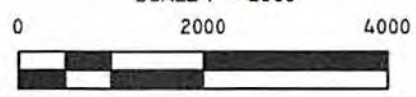
A HALL 2

Received

JUN 18 2014

Office of Oil and Gas
WV Dept. of Environmental Protection

SCALE 1" = 2000'



Blue Mountain Inc.
 11023 MASON DIXON HIGHWAY
 BURTON, WV 26562
 PHONE: (304) 662-6486

PREPARED FOR:
 NOBLE ENERGY, INC.
 333 TECHNOLOGY DRIVE, SUITE 116
 CANONSBURG, PA 15317

A HALL 2
TOPO SECTION OF ELLENBORO 7.5'
USGS TOPO QUADRANGLE

JUNE 12, 2014