

EQT PRODUCTION COMPANY WELL NO. WV 512428

LATITUDE 39°10'00"
WELL NO. WV 512428
STATE PLANE COORDINATES
(NORTH ZONE)

N. 232,098
E. 1,622,916

LAT=(N) 39.12958
LONG=(W) 80.82928

LEASE # 109481

72.86 ACRES±

JEFFREY A. SPERRY

LEASE # 106136

47.15 ACRES±

KENNETH P. ADAMS

LEASE # 105953

255.50 ACRES±

RICHARD L. & SHERYL A. RAY

WELL NO. WV 512428

LANDING POINT

STATE PLANE COORDINATES (NORTH ZONE)

N. 233,304
E. 1,622,877

LAT=(N) 39.13289
LONG=(W) 80.82947

LANDING POINT

STATE PLANE COORDINATES (NORTH ZONE)

N. 233,304
E. 1,622,877

LAT=(N) 39.13289
LONG=(W) 80.82947

LANDING POINT

STATE PLANE COORDINATES (NORTH ZONE)

N. 233,304
E. 1,622,877

LAT=(N) 39.13289
LONG=(W) 80.82947

LANDING POINT

STATE PLANE COORDINATES (NORTH ZONE)

N. 233,304
E. 1,622,877

LAT=(N) 39.13289
LONG=(W) 80.82947

LANDING POINT

STATE PLANE COORDINATES (NORTH ZONE)

N. 233,304
E. 1,622,877

LAT=(N) 39.13289
LONG=(W) 80.82947

LANDING POINT

STATE PLANE COORDINATES (NORTH ZONE)

N. 233,304
E. 1,622,877

LAT=(N) 39.13289
LONG=(W) 80.82947

LANDING POINT

STATE PLANE COORDINATES (NORTH ZONE)

N. 233,304
E. 1,622,877

LAT=(N) 39.13289
LONG=(W) 80.82947

LANDING POINT

STATE PLANE COORDINATES (NORTH ZONE)

N. 233,304
E. 1,622,877

LAT=(N) 39.13289
LONG=(W) 80.82947

LANDING POINT

STATE PLANE COORDINATES (NORTH ZONE)

N. 233,304
E. 1,622,877

LAT=(N) 39.13289
LONG=(W) 80.82947

LANDING POINT

STATE PLANE COORDINATES (NORTH ZONE)

N. 233,304
E. 1,622,877

LAT=(N) 39.13289
LONG=(W) 80.82947

LANDING POINT

STATE PLANE COORDINATES (NORTH ZONE)

N. 233,304
E. 1,622,877

LAT=(N) 39.13289
LONG=(W) 80.82947

LANDING POINT

STATE PLANE COORDINATES (NORTH ZONE)

N. 233,304
E. 1,622,877

LAT=(N) 39.13289
LONG=(W) 80.82947

LANDING POINT

STATE PLANE COORDINATES (NORTH ZONE)

N. 233,304
E. 1,622,877

LAT=(N) 39.13289
LONG=(W) 80.82947

LANDING POINT

STATE PLANE COORDINATES (NORTH ZONE)

N. 233,304
E. 1,622,877

LAT=(N) 39.13289
LONG=(W) 80.82947

LANDING POINT

STATE PLANE COORDINATES (NORTH ZONE)

N. 233,304
E. 1,622,877

LAT=(N) 39.13289
LONG=(W) 80.82947

LANDING POINT

STATE PLANE COORDINATES (NORTH ZONE)

N. 233,304
E. 1,622,877

LAT=(N) 39.13289
LONG=(W) 80.82947

LANDING POINT

STATE PLANE COORDINATES (NORTH ZONE)

N. 233,304
E. 1,622,877

LAT=(N) 39.13289
LONG=(W) 80.82947

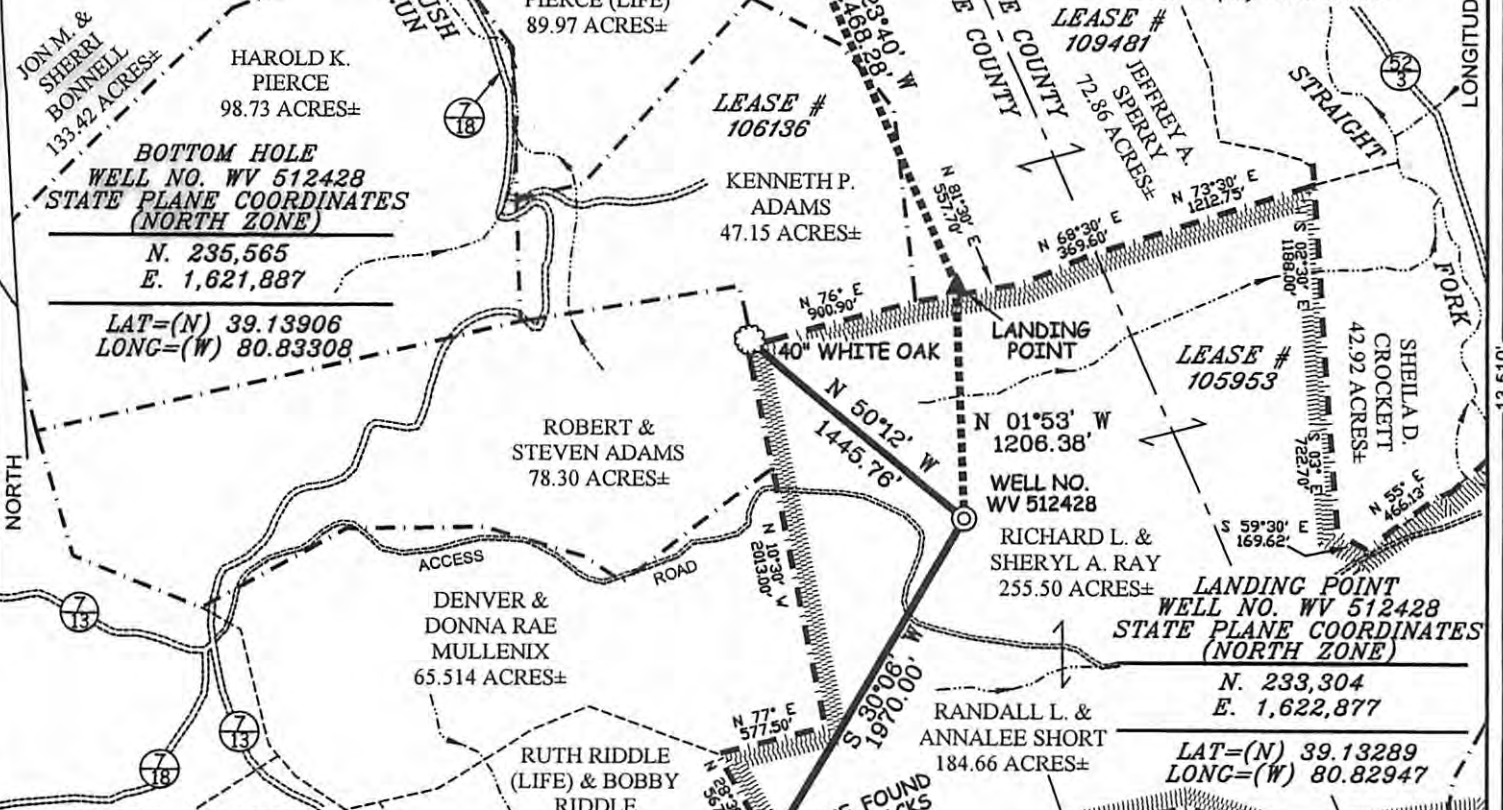
LANDING POINT

STATE PLANE COORDINATES (NORTH ZONE)

NORTH

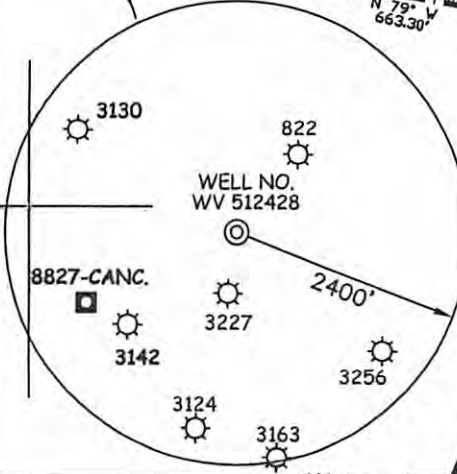
LONGITUDE 80°47'30"

13,510'

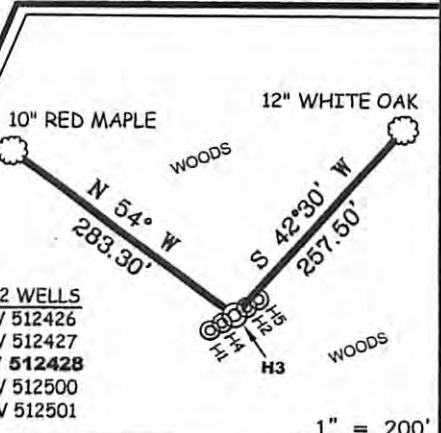


NOTES ON SURVEY

1. TIES TO WELLS AND CORNERS ARE BASED ON GRID NORTH FOR THE WV STATE PLANE COORDINATE SYSTEM NORTH ZONE NAD '27.
2. TIES TO REFERENCES ARE BASED ON MAGNETIC NORTH 06/04/09.
3. LEASE BOUNDARY SHOWN HEREON TAKEN FROM DEED BOOK 79 PAGE 563 AND ADJOINING DEEDS.
4. SURFACE OWNER AND ADJOINER INFORMATION TAKEN FROM THE ASSESSOR AND COUNTY CLERK RECORDS OF DODDRIDGE & RITCHIE COUNTY IN JANUARY, 2009.
5. WELL LAT./LONG. (NAD'27) ESTABLISHED BY DGPS(SUBMETER MAPPING GRADE).



REFERENCES



I THE UNDERSIGNED, HEREBY CERTIFY THAT THIS PLAT IS CORRECT TO THE BEST OF MY KNOWLEDGE AND BELIEF AND SHOWS ALL THE INFORMATION REQUIRED BY LAW AND THE REGULATIONS ISSUED AND PRESCRIBED BY THE DIVISION OF ENVIRONMENTAL PROTECTION.


P.S. 677
Gregory A. Smith



(+) DENOTES LOCATION OF WELL ON UNITED STATES TOPOGRAPHIC MAPS.
 DATE NOVEMBER 17, 20 09
 OPERATORS WELL NO. WV 512428
 API WELL NO. 47 - 85 - 09857 H
 STATE WEST VIRGINIA PERMIT

MINIMUM DEGREE OF ACCURACY 1 / 200 FILE NO. 6811P512428 (245-79)
 PROVEN SOURCE OF ELEVATION DGPS (SUBMETER MAPPING GRADE) SCALE 1" = 1,000'

STATE OF WEST VIRGINIA
 DIVISION OF ENVIRONMENTAL PROTECTION
 OFFICE OF OIL AND GAS



WELL TYPE: OIL GAS LIQUID INJECTION WASTE DISPOSAL IF "GAS" PRODUCTION STORAGE DEEP SHALLOW

LOCATION: ELEVATION 1,170' WATERSHED STRAIGHT FORK
 DISTRICT UNION COUNTY RITCHIE QUADRANGLE OXFORD 7.5'

SURFACE OWNER RICHARD L. & SHERYL A. RAY ACREAGE 255.50±
 ROYALTY OWNERS HAUGHT FAMILY TRUST, ET AL(402 ACRES±) & ADELE McDOUGAL, ET AL (53 & 2,000 ACRES±)

PROPOSED WORK: LEASE NO. 105953, 109481, & 106136
 DRILL CONVERT DRILL DEEPER REDRILL FRACTURE OR STIMULATE PLUG OFF OLD FORMATION
 PERFORATE NEW FORMATION PLUG AND ABANDON CLEAN OUT AND REPLUG OTHER
 PHYSICAL CHANGE IN WELL (SPECIFY) _____ TARGET FORMATION MARCELLUS SHALE
 ESTIMATED DEPTH _____

WELL OPERATOR EQT PRODUCTION COMPANY DESIGNATED AGENT REX C. RAY
 ADDRESS 1710 PENNSYLVANIA AVENUE CHARLESTON, WV 25302 ADDRESS 1710 PENNSYLVANIA AVENUE CHARLESTON, WV 25302

10/04/2013

COUNTY NAME PERMIT