



West Virginia Department of Environmental Protection  
Office of Oil and Gas  
**WELL LOCATION FORM: GPS**

API: PRE 29 85-09954N WELL NO.: 1

FARM NAME: A.J. Tate

RESPONSIBLE PARTY NAME: R.L. Roberts of Roberts Energy Corp.

COUNTY: Ritchie DISTRICT: Union<sup>4</sup>

QUADRANGLE: Pullman 7.5'<sup>562</sup>

SURFACE OWNER: A.J. Tate

ROYALTY OWNER: Betty Tate

UTM GPS NORTHING: 4,336,841

UTM GPS EASTING: 500,549 GPS ELEVATION: 281' 920'

The Responsible Party named above has chosen to submit GPS coordinates in lieu of preparing a new well location plat for a plugging permit or assigned API number on the above well. The Office of Oil and Gas will not accept GPS coordinates that do not meet the following requirements:

1. Datum: NAD 1983, Zone: 17 North, Coordinate Units: meters, Altitude: height above mean sea level (MSL) – meters.
2. Accuracy to Datum – 3.05 meters
3. Data Collection Method:

Survey grade GPS     : Post Processed Differential     

Real-Time Differential     

Mapping Grade GPS X: Post Processed Differential X

Real-Time Differential     

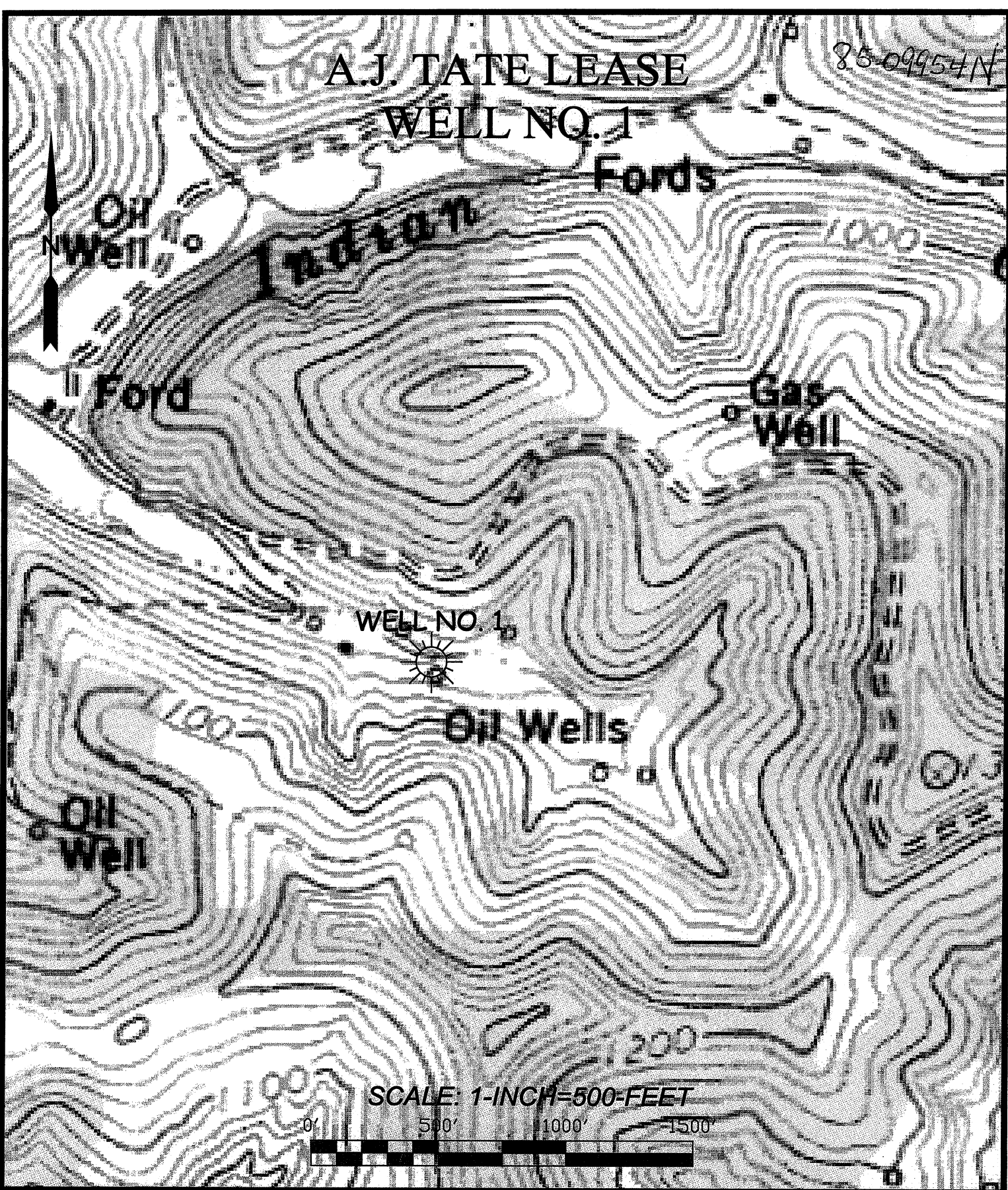
4. **Letter size copy of the topography map showing the well location.**

I the undersigned, hereby certify this data is correct to the best of my knowledge and belief and shows all the information required by law and the regulations issued and prescribed by the Office of Oil and Gas.

Gregory A. Smith November 2, 2011  
Gregory A. Smith, P.E. 677 - President, Smith Land Surveying, Inc. DATE

**A.J. TATE LEASE  
WELL NO. 1**

85-09954N



**SCALE: 1-INCH=500-FEET**



**SLS**  
SMITH LAND SURVEYING, INC.  
P.O. BOX 150 GLENVILLE, WV, 26351  
PH: (304) 462-5634 FAX: (304) 462-5656 E-MAIL: sls@slsurveys.com

DRAWN BY T.M.M.	FILE NO. 7748	DATE 11/02/11	CADD FILE: 7748topo.DWG
--------------------	------------------	------------------	----------------------------

TOPO SECTION OF:  
**PULLMAN, WV 7.5' QUAD**

COUNTY	DISTRICT
RITCHIE	UNION

OPERATOR:  
**ROBERTS ENERGY CORP.**  
2871 WV HIGHWAY 5 WEST  
GLENVILLE, WV 26351