



Antero Resources
 Pullman Unit 2H
 Ritchie County WV
 Northing: 14227833.30
 Easting: 1660197.85
 Original Wellpath

WELL DETAILS: Pullman Unit 2H

+N/S	+E/W	Northing	Latitude	Longitude	Spot
0.0	0.0	14227833.30	10 51 45.8 N 80° 55' 48.700 W		

PROJECT DETAILS: Ritchie County WV

Geodesic System: Universal Transverse Mercator (US Survey Feet)
 Datum: NAD 83 (NAD83 CONUS)
 Ellipsoid: GRS 80
 Zone: Zone 17N (84 W to 78 W)
 System Datum: Mean Sea Level

REFERENCE INFORMATION

Coordinates (US Survey Feet):
 Vertical (VD) Reference: Pullman Unit 2H, 1017.00'
 Horizontal (HD) Reference: Pullman Unit 2H, 1017.00'
 Vertical (VD) Reference: Pullman Unit 2H, 1017.00'
 Horizontal (HD) Reference: Pullman Unit 2H, 1017.00'
 Calculation Method: Minimum Curvature

Well Location Coordinates (NAD 83)

Name	+N/S	+E/W	TVD	Northing	Latitude	Longitude
SHL (UTM meters)	5188.1	-3079.3	0.0	14227833.30	10 51 45.8 N 80° 55' 48.700 W	
BHL (UTM meters)	439870	506044	627.8	14228331.44	10 51 45.8 N 80° 55' 48.700 W	

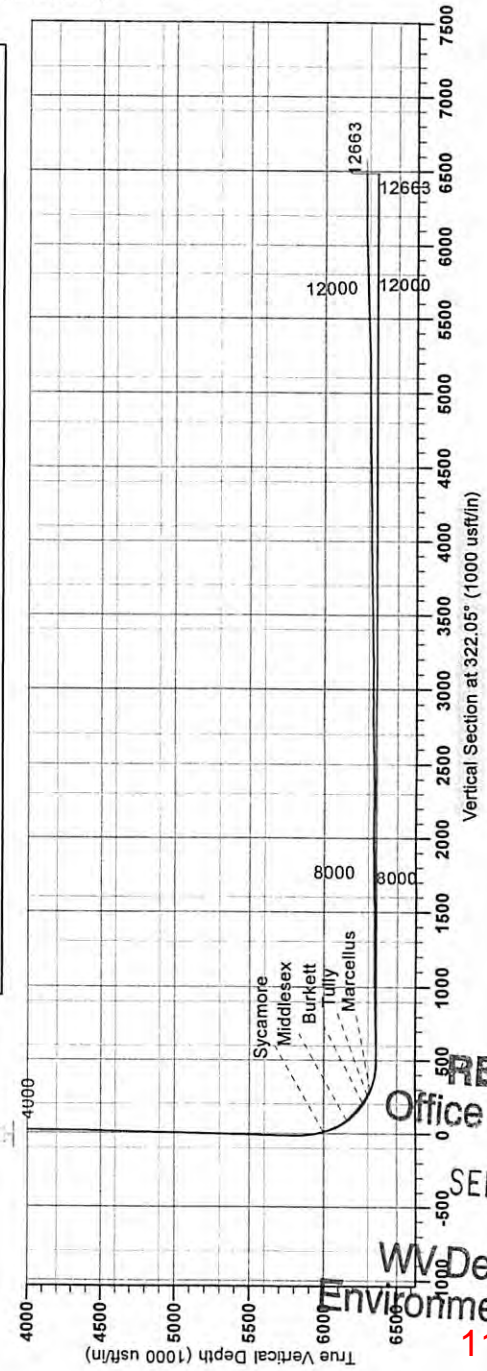
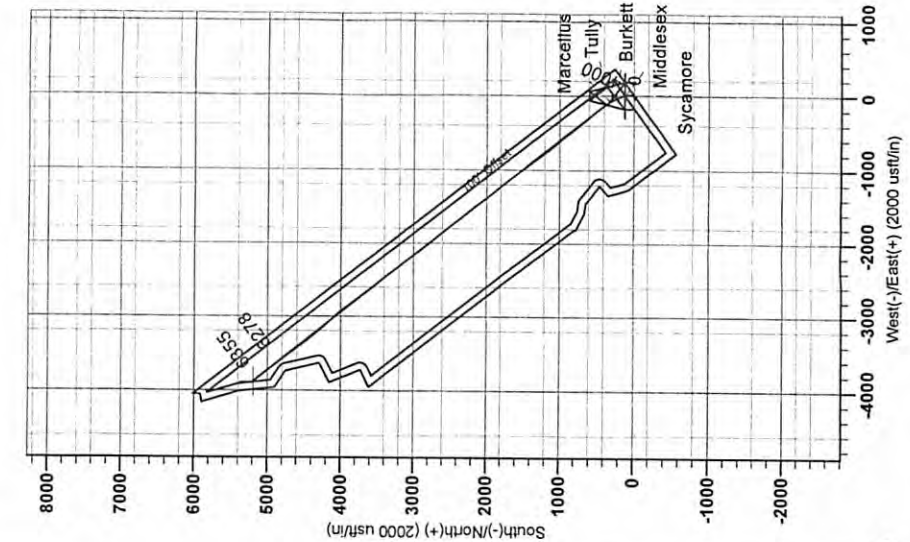
LEGEND

- Pullman Unit 2H, Original Wellpath, Plan 2 Post Gyro VO
- Original Wellpath

Genie Lightfoot
 9:57, July 18 2013
 Scientific Drilling
 421 South Eagle Lane
 Oklahoma City, OK

To convert Magnetic North to Grid, Subtract 8.32°
 To convert True North to Grid, Subtract 0.04°

Magnetic Field
 Strength: 45.5
 Dip Angle: 66.80°
 Date: 11/6/2012
 Model: IGRF2010



85-09978

RECEIVED
 Office of Oil & Gas
 SEP 03 2013
 WV Department of
 Environmental Protection
 11/08/2013