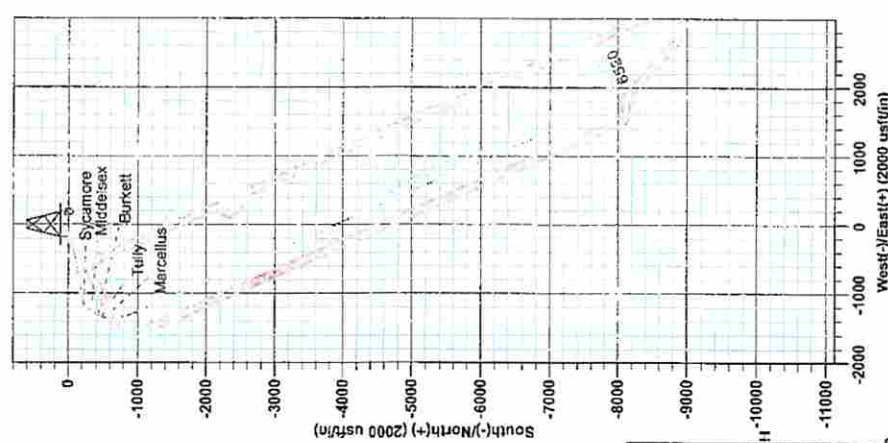


85-10005

Azimuth to Grid North
 True North: -0.00°
 Magnetic North: -8.42°
 Magnetic Field
 Strength: 52289.5ent
 Dip Angle: 66.78°
 Date: 2/19/2014
 Model: GMR2010

To convert Magnetic North to Grid, Subtract 8.42°
 To convert True North to Grid, Subtract 0.00°



Ireland Unit 1H
Ritchie County WV
Northing: 14233081.84
Easting: 1668389.35
As Drilled

WELL DETAILS Ireland Unit 1H

+N/S	+E/W	Northing	Easting	Ground Level	1075.0	Latitude	Longitude
0.0	0.0	14233081.84	1668389.35			11° 43.260' N	80° 54' 4.563" W

PROJECT DETAILS: Ritchie County WV

Geoid: System: Universal Transverse Mercator (US Survey Feet)
 Datum: NAD 1927 (NADCON CONUS)
 Ellipsoid: Clarke 1866
 Zone: Zone 17N (84 W to 76 W)
 System Datum: Mean Sea Level

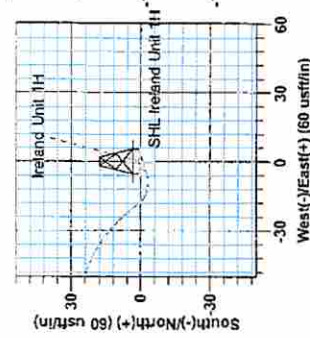
Genie Lightfoot
 8/26/2014
 Scientific Drilling
 421 South Main
 Oklaheema City, OK 73128

SITE DETAILS: DeBerry/Rufus/Langford

Site Center: DeBerry 1H
 Ness Pad

Site Centre Northing: 14233087.17
 Easting: 1668409.26

Positional Uncertainty: 0.0
 Convergence: 0.06
 Local North: Grid

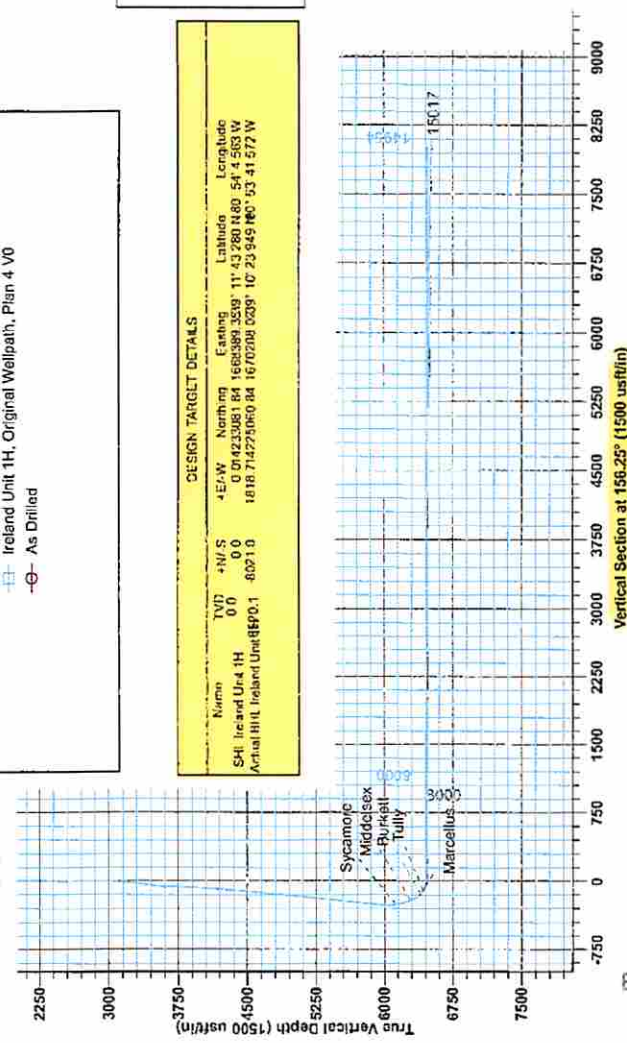


LEGEND

- Ireland Unit 1H, Original Wellpath, Plan 4 V0
- As Drilled

DESIGN TARGET DETAILS

Name	True Vertical Depth (1500 usft/m)	Northing	Easting	Latitude	Longitude
4E/W	0.0	0.0	0.0	0.0	0.0
Ireland Unit 1H	1816.714273060	14233081.84	1668389.35	11° 43.260' N	80° 54' 4.563" W
Actual Hit	1816.714273060	14233081.84	1668389.35	11° 43.260' N	80° 54' 4.563" W



Ireland 1H 1075 GL * 24.18 @ 1000.0umf
 GF: 1075.0

RECEIVED
 Office of Oil and Gas
 MAR 20 2015
 WV Department of
 Environmental Protection

03/27/2015

85-10005



Antero Resources

**Ritchie County WV
DeBerry/Rufus/Langford
Ireland Unit 1H
Original Wellpath**

Design: As Drilled

EOW Completion Report

31 March, 2014

RECEIVED
Office of Oil and Gas

MAR 20 2015

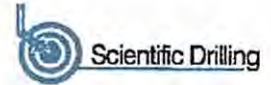
WV Department of
Environmental Protection



03/27/2015



EOW Completion Report



Company: Antero Resources
Project: Ritchie County WV
Site: DeBerry/Rufus/Langford
Well: Ireland Unit 1H
Wellbore: Original Wellpath
Design: As Drilled

Local Co-ordinate Reference: Well Ireland Unit 1H
TVD Reference: Ireland 1H 1075 GL + 24 KB @ 1099.0usft
MD Reference: Ireland 1H 1075 GL + 24 KB @ 1099.0usft
North Reference: Grid
Survey Calculation Method: Minimum Curvature
Database: Oklahoma District

Project	Ritchie County WV, Ritchie County WV, WV North		
Map System:	Universal Transverse Mercator (US Survey Fee	System Datum:	Mean Sea Level
Geo Datum:	NAD 1927 (NADCON CONUS)		
Map Zone:	Zone 17N (84 W to 78 W)		

Site DeBerry/Rufus/Langford, Site Center Deberry 1H

Site Position: Northing: 14,233,087.17 usft Latitude: 39° 11' 43.333 N
From: Map Easting: 1,668,409.26 usft Longitude: 80° 54' 4.310 W
Position Uncertainty: 0.0 usft Slot Radius: 13-3/16" Grid Convergence: 0.06 °

Well Ireland Unit 1H, Marcellus

Well Position +N-S 0.0 usft Northing: 14,233,081.84 usft Latitude: 39° 11' 43.280 N
 +E-W 0.0 usft Easting: 1,668,389.35 usft Longitude: 80° 54' 4.563 W
Position Uncertainty 2.0 usft Wellhead Elevation: 1,099.0 usft Ground Level: 1,075.0 usft

Wellbore Original Wellpath

Magnetics	Model Name	Sample Date	Declination (°)	Dip Angle (°)	Field Strength (nT)
	IGRF2010	2/18/2014	-8.36	66.78	52,299

Design As Drilled

Audit Notes:

Version: 1.0 **Phase:** ACTUAL **Tie On Depth:** 0.0

Vertical Section:	Depth From (TVD) (usft)	+N-S (usft)	+E-W (usft)	Direction (°)
	0.0	0.0	0.0	156.25

Survey Program Date 3/31/2014

From (usft)	To (usft)	Survey (Wellbore)	Tool Name	Description
100.0	2,835.3	Survey #2 Gyro to INT (Original Wellpath)	SDI Standard Keeper	Scientific Drilling Intl. Standard Wireline Keeper
2,900.0	4,819.8	Survey #3 Gyro to KOP (Original Wellpath)	SDI Standard Keeper	Scientific Drilling Intl. Standard Wireline Keeper
4,819.8	15,017.0	Survey #4 SDI MWD (Original Wellpath)	SDI MWD	Scientific Drilling Intl. MWD - Standard ver 1.0.1

Survey

MD (usft)	Inc (°)	Azi (azimuth) (°)	TVD (usft)	N/S (usft)	E/W (usft)	V. Sec (usft)	DLeg (°/100usft)
0.0	0.00	0.00	0.0	0.0	0.0	0.0	0.00
100.0	0.14	231.07	100.0	-0.1	-0.1	0.0	0.14
200.0	0.17	208.54	200.0	-0.3	-0.3	0.2	0.07
300.0	0.11	214.70	300.0	-0.5	-0.4	0.3	0.06
400.0	0.15	228.69	400.0	-0.7	-0.5	0.4	0.05
500.0	0.12	207.16	500.0	-0.8	-0.7	0.5	0.06
600.0	0.11	214.98	600.0	-1.0	-0.8	0.6	0.02
700.0	0.11	207.03	700.0	-1.2	-0.9	0.7	0.02
800.0	0.11	232.46	800.0	-1.3	-1.0	0.8	0.05
900.0	0.11	212.83	900.0	-1.5	-1.1	0.9	0.04

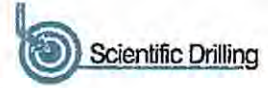
MAR 20 2015

03/27/2015

85-10005



EOW Completion Report



Company: Antero Resources
 Project: Ritchie County WV
 Site: DeBerry/Rufus/Langford
 Well: Ireland Unit 1H
 Wellbore: Original Wellpath
 Design: As Drilled

Local Co-ordinate Reference: Well Ireland Unit 1H
 TVD Reference: Ireland 1H 1075 GL + 24 KB @ 1099.0usft
 MD Reference: Ireland 1H 1075 GL + 24 KB @ 1099.0usft
 North Reference: Grid
 Survey Calculation Method: Minimum Curvature
 Database: Oklahoma District

Survey

MD (usft)	Inc (°)	Azi (azimuth) (°)	TVD (usft)	N/S (usft)	EW (usft)	V. Sec (usft)	DLeg (°/100usft)
1,000.0	0.12	245.85	1,000.0	-1.6	-1.3	0.9	0.07
1,100.0	0.12	259.38	1,100.0	-1.6	-1.5	0.9	0.03
1,200.0	0.10	286.16	1,200.0	-1.6	-1.7	0.8	0.05
1,300.0	0.11	305.01	1,300.0	-1.6	-1.8	0.7	0.04
1,400.0	0.13	308.59	1,400.0	-1.4	-2.0	0.5	0.02
1,500.0	0.05	330.55	1,500.0	-1.3	-2.1	0.4	0.09
1,600.0	0.04	358.42	1,600.0	-1.3	-2.1	0.3	0.02
1,700.0	0.06	252.55	1,700.0	-1.2	-2.2	0.2	0.08
1,800.0	0.07	266.26	1,800.0	-1.3	-2.3	0.2	0.02
1,900.0	0.06	218.60	1,900.0	-1.3	-2.4	0.2	0.05
2,000.0	0.07	306.49	2,000.0	-1.3	-2.5	0.2	0.09
2,100.0	0.17	296.58	2,100.0	-1.2	-2.6	0.0	0.10
2,200.0	0.09	220.24	2,200.0	-1.2	-2.8	0.0	0.17
2,300.0	0.09	262.32	2,300.0	-1.3	-3.0	0.0	0.06
2,400.0	0.15	277.90	2,400.0	-1.3	-3.2	-0.1	0.07
2,500.0	0.24	218.34	2,500.0	-1.4	-3.4	-0.1	0.21
2,600.0	0.22	236.26	2,600.0	-1.7	-3.7	0.0	0.07
2,700.0	0.23	231.54	2,700.0	-1.9	-4.0	0.1	0.02
2,800.0	0.50	230.90	2,800.0	-2.3	-4.5	0.3	0.27
2,835.3	0.63	236.83	2,835.3	-2.5	-4.8	0.4	0.40
2,900.0	0.87	253.40	2,900.0	-2.8	-5.6	0.4	0.50
3,000.0	2.79	262.63	2,999.9	-3.4	-8.7	-0.4	1.94
3,100.0	3.73	293.73	3,099.8	-2.4	-14.1	-3.5	1.97
3,200.0	7.27	324.20	3,199.3	4.1	-20.8	-12.1	4.47
3,300.0	10.45	309.76	3,298.1	15.0	-31.5	-26.4	3.86
3,400.0	12.73	286.72	3,396.1	24.0	-49.0	-41.7	5.11
3,500.0	16.46	267.96	3,492.9	26.7	-73.7	-54.1	5.98
3,600.0	18.81	254.90	3,588.3	21.9	-103.5	-61.8	4.59
3,700.0	22.41	250.16	3,681.9	11.3	-137.0	-65.5	3.97
3,800.0	25.59	249.73	3,773.2	-2.7	-175.2	-68.1	3.18
3,900.0	25.56	249.36	3,863.4	-17.8	-215.6	-70.6	0.16
4,000.0	24.58	255.70	3,954.0	-30.5	-256.0	-75.2	2.86
4,100.0	24.19	254.69	4,045.1	-41.1	-295.9	-81.6	0.57
4,200.0	24.45	253.41	4,136.2	-52.4	-335.5	-87.2	0.59
4,300.0	23.04	255.21	4,227.7	-63.3	-374.3	-92.8	1.59
4,400.0	23.19	255.75	4,319.7	-73.1	-412.3	-99.1	0.26
4,500.0	24.32	256.51	4,411.2	-82.8	-451.4	-106.0	1.17
4,600.0	23.59	255.73	4,502.6	-92.5	-490.8	-113.0	0.80
4,700.0	24.54	257.13	4,593.9	-102.1	-530.4	-120.2	1.11
4,800.0	24.16	260.85	4,685.0	-110.0	-570.9	-129.3	1.58
4,819.8	23.91	260.92	4,703.1	-111.2	-578.8	-131.3	1.27
4,901.0	22.83	259.60	4,777.7	-116.7	-610.6	-139.1	1.48
4,995.0	23.60	260.72	4,864.1	-123.0	-647.1	-148.0	0.94
5,088.0	24.33	259.87	4,949.0	-129.4	-684.3	-157.2	0.87
5,182.0	24.39	260.57	5,034.7	-136.0	-722.5	-166.6	0.31

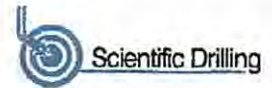
MAR 20 2015

03/27/2015

85-10005



EOW Completion Report



Company: Antero Resources
Project: Ritchie County WV
Site: DeBerry/Rufus/Langford
Well: Ireland Unit 1H
Wellbore: Original Wellpath
Design: As Drilled

Local Co-ordinate Reference: Well Ireland Unit 1H
TVD Reference: Ireland 1H 1075 GL + 24 KB @ 1099.0usft
MD Reference: Ireland 1H 1075 GL + 24 KB @ 1099.0usft
North Reference: Grid
Survey Calculation Method: Minimum Curvature
Database: Oklahoma District

Survey

MD (usft)	Inc (°)	Azi (azimuth) (°)	TVD (usft)	N/S (usft)	E/W (usft)	V. Sec (usft)	DLeg (°/100usft)
5,276.0	24.22	261.35	5,120.3	-142.0	-760.7	-176.4	0.39
5,370.0	25.43	259.72	5,205.6	-148.5	-799.7	-186.1	1.48
5,465.0	24.10	258.08	5,291.9	-156.2	-838.7	-194.8	1.58
5,560.0	23.03	259.12	5,379.0	-163.7	-875.9	-202.9	1.21
5,653.0	22.25	260.82	5,464.8	-169.9	-911.2	-211.4	1.09
5,747.0	22.31	259.81	5,551.8	-175.9	-946.3	-220.1	0.41
5,841.0	22.85	260.25	5,638.6	-182.2	-981.9	-228.7	0.60
5,934.0	22.12	259.24	5,724.5	-188.5	-1,016.9	-237.0	0.89
6,029.0	23.88	259.76	5,812.0	-195.3	-1,053.3	-245.5	1.86
6,122.0	26.10	260.80	5,896.3	-201.9	-1,092.1	-255.0	2.43
6,186.0	24.42	259.07	5,954.1	-206.6	-1,119.0	-261.5	2.87
6,232.0	23.09	257.67	5,996.2	-210.4	-1,137.1	-265.4	3.14
6,279.0	23.47	246.89	6,039.4	-216.0	-1,154.7	-267.3	9.09
6,326.0	24.96	233.88	6,082.3	-225.5	-1,171.4	-265.3	11.76
6,371.0	26.82	225.30	6,122.8	-238.3	-1,186.3	-259.7	9.28
Sycamore							
6,373.0	26.91	224.95	6,124.6	-238.9	-1,186.9	-259.3	9.28
6,420.0	30.23	222.72	6,165.9	-255.1	-1,202.4	-250.7	7.42
6,467.0	34.11	222.39	6,205.7	-273.6	-1,219.4	-240.7	8.26
6,514.0	38.11	222.17	6,243.6	-294.1	-1,238.0	-229.4	8.52
6,561.0	41.99	220.75	6,279.6	-316.7	-1,258.0	-216.7	8.48
6,573.0	42.60	219.22	6,288.5	-322.9	-1,263.2	-213.2	10.00
Middelsex							
6,608.0	44.50	214.95	6,313.8	-342.2	-1,277.7	-201.4	10.00
6,655.0	47.94	210.18	6,346.4	-370.8	-1,295.9	-182.6	10.35
6,702.0	53.75	207.42	6,376.0	-402.7	-1,313.4	-160.4	13.17
6,731.0	56.95	205.15	6,392.5	-424.1	-1,324.0	-145.1	12.77
Burkett							
6,749.0	58.95	203.82	6,402.1	-438.0	-1,330.3	-134.9	12.77
6,791.0	63.71	199.63	6,422.2	-472.2	-1,343.9	-109.0	14.30
Tully							
6,796.0	64.28	199.16	6,424.4	-476.4	-1,345.4	-105.8	14.30
6,842.0	70.44	193.48	6,442.1	-517.2	-1,357.3	-73.3	17.59
Marcellus							
6,843.0	70.58	193.36	6,442.5	-518.1	-1,357.5	-72.5	17.59
6,890.0	75.55	187.07	6,456.2	-562.3	-1,365.4	-35.3	16.60
6,937.0	80.57	180.16	6,465.9	-608.1	-1,368.3	5.6	17.91
6,955.0	82.50	177.66	6,468.5	-625.9	-1,368.0	22.0	17.43
7,018.0	88.69	172.29	6,473.4	-688.5	-1,362.5	81.4	12.99
7,126.0	90.40	166.31	6,474.2	-794.5	-1,342.4	186.6	5.76
7,220.0	91.18	161.68	6,472.9	-884.8	-1,316.5	279.7	4.99
7,314.0	91.41	157.38	6,470.8	-972.9	-1,283.6	373.5	4.58
7,409.0	90.47	155.29	6,469.3	-1,059.9	-1,245.5	468.5	2.41
7,503.0	89.19	152.77	6,469.5	-1,144.4	-1,204.4	562.4	3.01
7,597.0	91.31	155.45	6,469.1	-1,228.9	-1,163.3	656.3	3.64

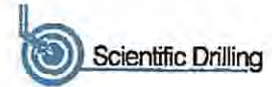
MAR 20 2015

03/27/2015

85-10005



EOW Completion Report



Company: Antero Resources
Project: Ritchie County WV
Site: DeBerry/Rufus/Langford
Well: Ireland Unit 1H
Wellbore: Original Wellpath
Design: As Drilled

Local Co-ordinate Reference: Well Ireland Unit 1H
TVD Reference: Ireland 1H 1075 GL + 24 KB @ 1099.0usft
MD Reference: Ireland 1H 1075 GL + 24 KB @ 1099.0usft
North Reference: Grid
Survey Calculation Method: Minimum Curvature
Database: Oklahoma District

Survey

MD (usft)	Inc (°)	Azi (azimuth) (°)	TVD (usft)	N/S (usft)	E/W (usft)	V. Sec (usft)	DLeg (°/100usft)
7,691.0	91.71	154.98	6,466.7	-1,314.2	-1,123.9	750.3	0.66
7,786.0	91.41	157.25	6,464.1	-1,401.0	-1,085.5	845.2	2.41
7,880.0	90.17	157.62	6,462.8	-1,487.8	-1,049.4	939.2	1.38
7,974.0	90.57	157.10	6,462.2	-1,574.6	-1,013.2	1,033.2	0.70
8,068.0	89.70	157.88	6,461.9	-1,661.4	-977.2	1,127.1	1.24
8,162.0	89.50	157.39	6,462.6	-1,748.4	-941.5	1,221.1	0.56
8,256.0	89.39	156.40	6,463.5	-1,834.8	-904.6	1,315.1	1.06
8,351.0	89.56	156.48	6,464.4	-1,921.9	-866.6	1,410.1	0.20
8,445.0	90.13	156.70	6,464.6	-2,008.1	-829.3	1,504.1	0.65
8,539.0	90.74	155.02	6,463.9	-2,093.9	-790.8	1,598.1	1.90
8,633.0	88.96	157.14	6,464.2	-2,179.8	-752.7	1,692.1	2.94
8,728.0	88.99	156.85	6,465.9	-2,267.3	-715.6	1,787.1	0.31
8,822.0	88.32	156.62	6,468.1	-2,353.6	-678.5	1,881.0	0.75
8,915.0	88.22	157.49	6,470.9	-2,439.2	-642.3	1,974.0	0.94
9,009.0	88.79	156.55	6,473.3	-2,525.7	-605.6	2,067.9	1.17
9,100.0	88.66	154.85	6,475.4	-2,608.6	-568.1	2,158.9	1.87
9,191.0	88.53	155.91	6,477.6	-2,691.3	-530.2	2,249.9	1.17
9,282.0	89.13	156.15	6,479.4	-2,774.5	-493.3	2,340.8	0.71
9,373.0	93.46	157.03	6,477.4	-2,857.9	-457.1	2,431.8	4.86
9,464.0	91.98	156.87	6,473.1	-2,941.6	-421.5	2,522.7	1.64
9,555.0	90.44	155.77	6,471.1	-3,024.9	-385.0	2,613.7	2.08
9,647.0	91.51	156.60	6,469.6	-3,109.0	-347.9	2,705.6	1.47
9,737.0	91.18	156.21	6,467.5	-3,191.5	-311.8	2,795.6	0.57
9,828.0	90.74	154.59	6,465.9	-3,274.2	-274.0	2,886.6	1.84
9,919.0	89.09	154.76	6,466.1	-3,356.5	-235.0	2,977.5	1.82
10,010.0	90.10	156.94	6,466.7	-3,439.5	-197.8	3,068.5	2.64
10,103.0	88.56	156.17	6,467.8	-3,524.8	-160.8	3,161.5	1.85
10,197.0	89.93	157.99	6,469.1	-3,611.4	-124.2	3,255.5	2.42
10,291.0	89.36	158.41	6,469.6	-3,698.6	-89.3	3,349.4	0.75
10,385.0	89.90	156.48	6,470.2	-3,785.5	-53.3	3,443.4	2.13
10,479.0	89.66	157.14	6,470.6	-3,871.9	-16.2	3,537.4	0.75
10,573.0	89.40	156.52	6,471.4	-3,958.3	20.7	3,631.4	0.72
10,667.0	89.09	154.74	6,472.6	-4,043.9	59.5	3,725.4	1.92
10,761.0	89.56	154.94	6,473.7	-4,129.0	99.5	3,819.4	0.54
10,855.0	89.33	154.61	6,474.6	-4,214.0	139.5	3,913.3	0.43
10,949.0	89.93	156.26	6,475.2	-4,299.5	178.6	4,007.3	1.87
11,044.0	89.46	156.81	6,475.7	-4,386.6	216.4	4,102.3	0.76
11,138.0	89.60	157.10	6,476.5	-4,473.1	253.2	4,196.3	0.34
11,231.0	91.01	157.11	6,476.0	-4,558.8	289.4	4,289.3	1.52
11,326.0	91.08	157.28	6,474.3	-4,646.3	326.2	4,384.2	0.19
11,420.0	90.24	157.15	6,473.2	-4,733.0	362.6	4,478.2	0.90
11,514.0	90.87	157.05	6,472.3	-4,819.6	399.2	4,572.2	0.68
11,608.0	88.79	156.32	6,472.6	-4,905.9	436.4	4,666.2	2.35
11,702.0	89.03	156.17	6,474.4	-4,991.9	474.3	4,760.2	0.30
11,796.0	87.85	155.31	6,476.9	-5,077.6	512.1	4,854.1	1.55

RECEIVED

MAR 20 2015

03/27/2015

85-10005



EOW Completion Report



Company: Antero Resources
 Project: Ritchie County WV
 Site: DeBerry/Rufus/Langford
 Well: Ireland Unit 1H
 Wellbore: Original Wellpath
 Design: As Drilled

Local Co-ordinate Reference: Well Ireland Unit 1H
 TVD Reference: Ireland 1H 1075 GL + 24 KB @ 1099.0usft
 MD Reference: Ireland 1H 1075 GL + 24 KB @ 1099.0usft
 North Reference: Grd
 Survey Calculation Method: Minimum Curvature
 Database: Oklahoma District

Survey

MD (usft)	Inc (°)	Azi (azimuth) (°)	TVD (usft)	N/S (usft)	EW (usft)	V. Sec (usft)	DLeg (°/100usft)
11,890.0	88.36	154.93	6,480.0	-5,162.8	552.4	4,948.1	0.68
11,984.0	87.78	155.19	6,483.2	-5,248.0	592.0	5,042.0	0.68
12,078.0	88.32	155.73	6,486.4	-5,333.5	631.0	5,135.9	0.81
12,173.0	88.29	154.74	6,489.2	-5,419.7	670.8	5,230.9	1.04
12,267.0	89.46	157.27	6,491.0	-5,505.5	709.0	5,324.8	2.96
12,361.0	89.03	157.14	6,492.3	-5,592.2	745.4	5,418.8	0.48
12,455.0	88.69	156.10	6,494.2	-5,678.5	782.7	5,512.8	1.16
12,549.0	88.99	155.40	6,496.1	-5,764.1	821.3	5,606.8	0.81
12,643.0	90.74	156.68	6,496.3	-5,850.0	859.5	5,700.8	2.31
12,737.0	88.79	156.05	6,496.7	-5,936.2	897.2	5,794.8	2.18
12,831.0	88.09	155.51	6,499.2	-6,021.8	935.7	5,888.7	0.94
12,924.0	88.99	157.72	6,501.6	-6,107.2	972.6	5,981.7	2.57
13,019.0	88.53	154.61	6,503.7	-6,194.0	1,011.0	6,076.7	3.31
13,113.0	90.03	154.69	6,504.8	-6,279.0	1,051.3	6,170.6	1.60
13,207.0	89.77	154.91	6,505.0	-6,364.0	1,091.3	6,264.6	0.36
13,301.0	90.57	157.00	6,504.7	-6,449.9	1,129.6	6,358.8	2.38
13,395.0	90.77	158.35	6,503.6	-6,536.8	1,165.3	6,452.5	1.45
13,489.0	91.34	157.29	6,501.9	-6,623.8	1,200.8	6,546.5	1.28
13,583.0	90.50	156.63	6,500.4	-6,710.3	1,237.5	6,640.5	1.14
13,678.0	90.50	155.76	6,499.5	-6,797.2	1,275.9	6,735.5	0.92
13,772.0	89.40	155.09	6,499.6	-6,882.7	1,315.0	6,829.4	1.37
13,866.0	90.13	156.56	6,500.0	-6,968.5	1,353.5	6,923.4	1.75
13,960.0	89.43	156.95	6,500.4	-7,054.8	1,390.6	7,017.4	0.85
14,054.0	89.09	156.37	6,501.6	-7,141.1	1,427.8	7,111.4	0.72
14,148.0	89.06	156.30	6,503.1	-7,227.2	1,465.5	7,205.4	0.08
14,242.0	88.99	156.39	6,504.7	-7,313.3	1,503.2	7,299.4	0.12
14,336.0	89.83	155.86	6,505.7	-7,399.3	1,541.3	7,393.4	1.06
14,430.0	88.76	156.25	6,506.8	-7,485.2	1,579.4	7,487.4	1.21
14,524.0	89.53	156.09	6,508.2	-7,571.2	1,617.4	7,581.4	0.84
14,618.0	87.71	155.84	6,510.5	-7,657.0	1,655.7	7,675.3	1.95
14,712.0	88.35	156.41	6,513.7	-7,742.9	1,693.7	7,769.3	0.91
14,806.0	88.49	154.95	6,516.3	-7,828.5	1,732.4	7,863.2	1.56
14,900.0	88.79	155.40	6,518.6	-7,913.8	1,771.9	7,957.2	0.58
14,958.0	89.26	156.40	6,519.5	-7,966.7	1,795.5	8,015.2	1.90
15,017.0	89.74	157.42	6,520.1	-8,021.0	1,818.7	8,074.2	1.91

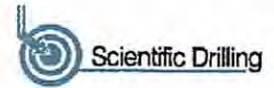
RECEIVED
Office of Oil and Gas

MAR 20 2015

85-10005



EOW Completion Report



Company: Antero Resources
Project: Ritchie County WV
Site: DeBerry/Rufus/Langford
Well: Ireland Unit 1H
Wellbore: Original Wellpath
Design: As Drilled

Local Co-ordinate Reference: Well Ireland Unit 1H
TVD Reference: Ireland 1H 1075 GL + 24 KB @ 1099.0usft
MD Reference: Ireland 1H 1075 GL + 24 KB @ 1099.0usft
North Reference: Grid
Survey Calculation Method: Minimum Curvature
Database: Oklahoma District

Design Annotations

Measured Depth (usft)	Vertical Depth (usft)	Local Coordinates		Comment
		+N/-S (usft)	+E/-W (usft)	
6,371.0	6,122.8	-238.3	-1,186.3	Sycamore
6,573.0	6,288.5	-322.9	-1,263.2	Middelsex
6,731.0	6,392.5	-424.1	-1,324.0	Burkett
6,791.0	6,422.2	-472.2	-1,343.9	Tully
6,842.0	6,442.1	-517.2	-1,357.3	Marcellus

Checked By: _____ Approved By: _____ Date: _____

RECEIVED
 Office of Oil and Gas

MAR 20 2015

WV Department of
 Environmental Protection