

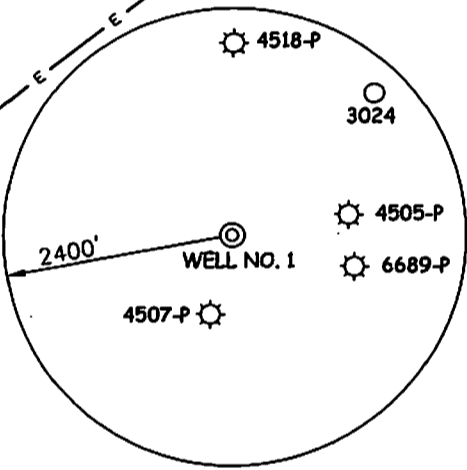
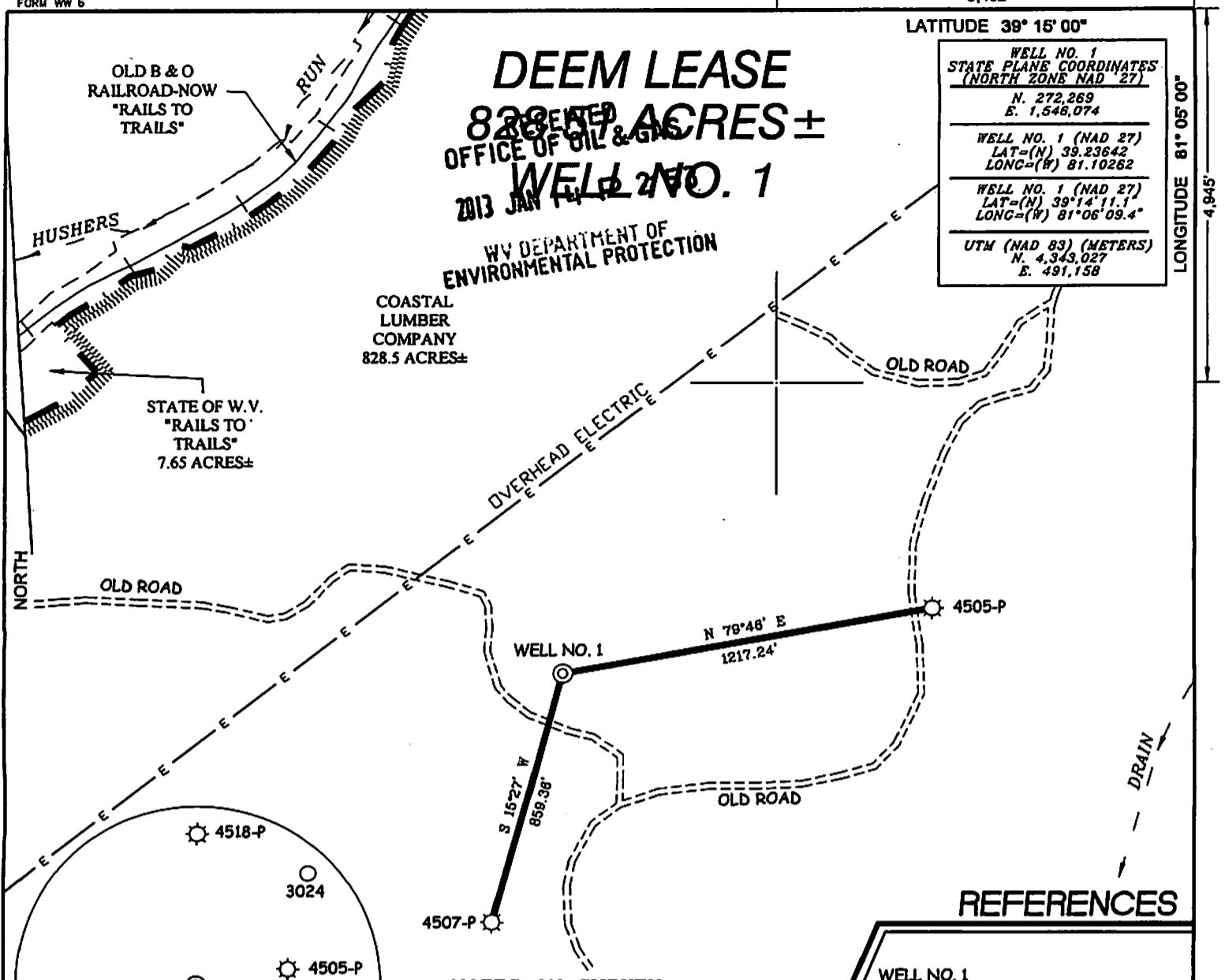
LATITUDE 39° 15' 00"
 LONGITUDE 81° 05' 00"
 WELL NO. 1
 STATE PLANE COORDINATES
 (NORTH ZONE NAD '27)
 N. 272,269
 E. 1,548,074
 WELL NO. 1 (NAD '27)
 LAT=(N) 39.23642
 LONG=(W) 81.10262
 WELL NO. 1 (NAD '27)
 LAT=(N) 39°14'11.1
 LONG=(W) 81°06'09.4"
 UTM (NAD 83) (METERS)
 N. 4,343,027
 E. 491,158

DEEM LEASE
828.5 ACRES ±
 OFFICE OF OIL & GAS
 2013 JAN 14
WELL NO. 1

WV DEPARTMENT OF ENVIRONMENTAL PROTECTION

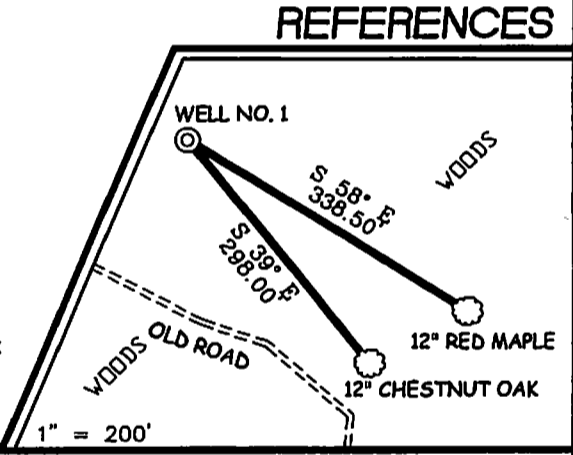
COASTAL LUMBER COMPANY
 828.5 ACRES ±

STATE OF W.V.
 "RAILS TO TRAILS"
 7.65 ACRES ±



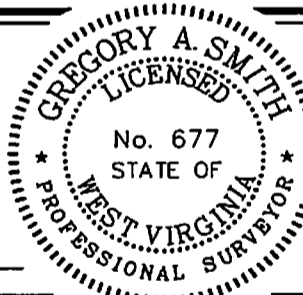
NOTES ON SURVEY

1. TIES TO WELLS AND CORNERS ARE BASED ON GRID NORTH FOR THE WV STATE PLANE COORDINATE SYSTEM NORTH ZONE NAD '27.
2. TIES TO REFERENCES ARE BASED ON MAGNETIC NORTH 12-16-12.
3. LEASE BOUNDARY SHOWN HEREON TAKEN FROM A TITLE OPINION DATED AUGUST 29, 2012 BY LEWIS GLASSER CASEY & ROLLINS PLLC.
4. SURFACE OWNER AND ADJOINER INFORMATION TAKEN FROM THE ASSESSOR AND COUNTY CLERK RECORDS OF LEWIS COUNTY IN JULY, 2012.
5. WELL LAT./LONG. (NAD'27) ESTABLISHED BY DGPS(SUBMETER MAPPING GRADE).



I THE UNDERSIGNED, HEREBY CERTIFY THAT THIS PLAT IS CORRECT TO THE BEST OF MY KNOWLEDGE AND BELIEF AND SHOWS ALL THE INFORMATION REQUIRED BY LAW AND THE REGULATIONS ISSUED AND PRESCRIBED BY THE DIVISION OF ENVIRONMENTAL PROTECTION.

P.S. 677
Gregory A. Smith



(+) DENOTES LOCATION OF WELL ON UNITED STATES TOPOGRAPHIC MAPS.
 DATE DECEMBER 27, 20 12
 OPERATORS WELL NO. DEEM #1
 API WELL NO. 47 - 085 - 10024
 STATE COUNTY PERMIT

MINIMUM DEGREE OF ACCURACY 1/200 FILE NO. 7985P1(448-02)
 PROVEN SOURCE OF ELEVATION DGPS (SUBMETER MAPPING GRADE) SCALE 1" = 500'

STATE OF WEST VIRGINIA
 DIVISION OF ENVIRONMENTAL PROTECTION
 OFFICE OF OIL AND GAS

WELL TYPE: OIL GAS LIQUID INJECTION WASTE DISPOSAL IF "GAS" PRODUCTION STORAGE DEEP SHALLOW

LOCATION: ELEVATION 1,105' WATERSHED NORTH FORK HUGHES RIVER & HUSHERS RUN
 DISTRICT GRANT COUNTY RITCHIE QUADRANGLE HARRISVILLE 7.5'

SURFACE OWNER COASTAL LUMBER COMPANY ACREAGE 828.51±
 ROYALTY OWNER J.F. DEEM ETAL LEASE ACREAGE 828.51±

PROPOSED WORK: DRILL CONVERT DRILL DEEPER REDRILL FRACTURE OR STIMULATE PLUG OFF OLD FORMATION PERFORATE NEW FORMATION PLUG AND ABANDON CLEAN OUT AND REPLUG OTHER

PHYSICAL CHANGE IN WELL (SPECIFY) _____ TARGET FORMATION WARREN
 ESTIMATED DEPTH 3,800'

WELL OPERATOR ENERGY CORPORATION OF AMERICA DESIGNATED AGENT RODNEY A. WINTERS
 ADDRESS 501 56TH STREET S.E. ADDRESS 501 56TH STREET S.E.
CHARLESTON, WV 25304 CHARLESTON, WV 25304

COUNTY NAME
 PERMIT